

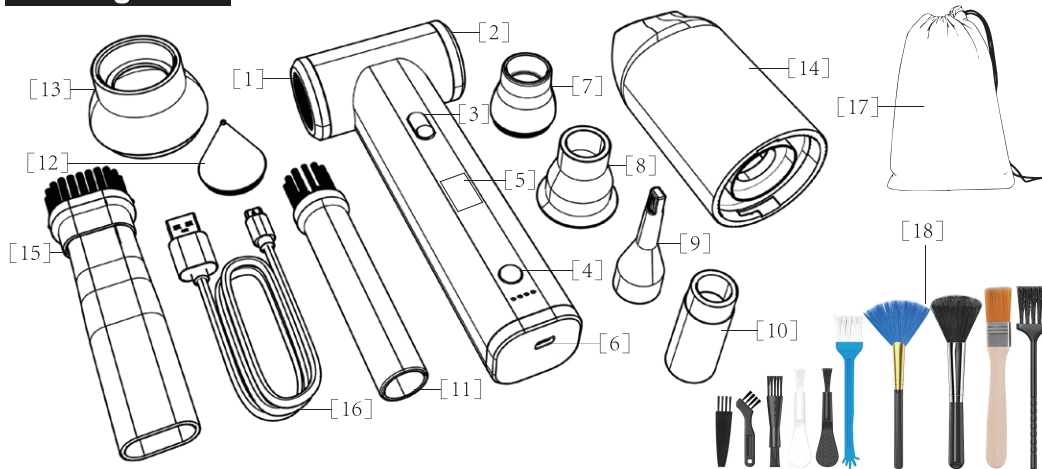
User Manual

T5213 pro

Welcome

Thanks for purchasing this **Compressed Air Duster**, Please read this user manual carefully before use.

Package List



1	Air Outlet	7	Multi-Use Nozzle	13	Dust Cap
2	Air Inlet	8	Silicone Nozzle	14	Dust Cup
3	Speed Slide Button	9	Tip Inflatable Nozzle	15	Flat Brush
4	Power Button	10	Short Blow Nozzle	16	Charging Cable
5	Display Screend	11	Round Brush	17	Storage Bag
6	Type-C Charging Port	12	Hammer	18	Cleaning Kit(10Pcs)

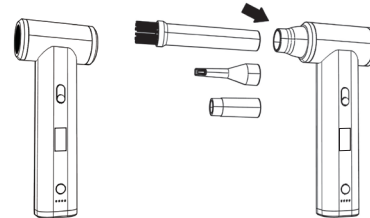
Specifications

- * Product Type: Compressed Air Duster
- * Material: Aluminum Alloy Air Duster; ABS + Silicone Accessories
- * Color: Black
- * Motor: High-Speed Brushless Motor
- * Working Voltage: DC 12V
- * Maximum Power: 160W
- * Power Supply: 14.8V 10,000mAh Built-In Rechargeable Battery
- * Charged Time: About 4.5Hrs
- * Working Time: About 130Mins In Lowest Speed, 13Mins In Highest Speed (According to different speed levels and the actual usage)
- * Wind Speed: 55M/S Highest, 7M/S Lowest
- * Wind Pressure: 180G
- * Suction Power: 6KPA
- * Rotate Speed: Stepless Variable Speed (100,000RPM Lowest; 130,000RPM Highest)
- * Working Temperature: -10°C-50°C/14°F-122°F

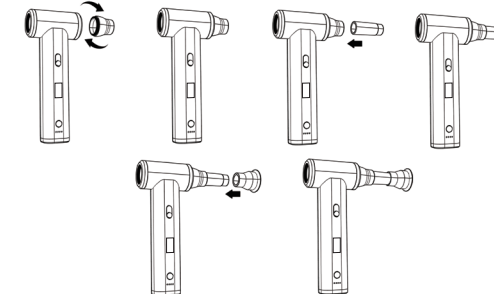
Instruction

1. Air Blower

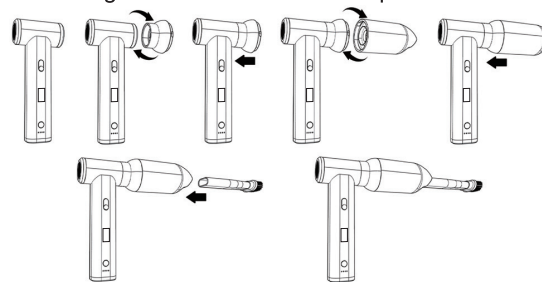
Mouthpiece installation process



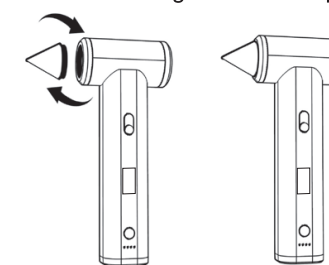
Vacuum fittings installation process



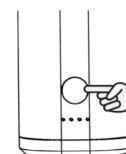
Cleaning accessories installation process



Life hammer fittings installation process



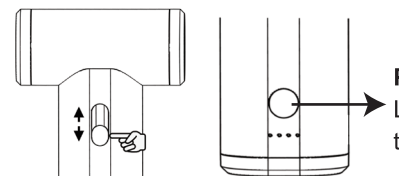
2. Switch Off



Long press the power button to turn on/off.

It is prohibited to lock the air inlet, air blowing port and heat dissipation holes while the product is working to avoid destruction of the machine.

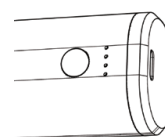
3. Speed Adjustment



Power Button
Long press to turn on/off

picture	speed	rpm/mins
	rpm/mins	130,000±10%
	low speed	0

4. Charge



Type-C

5V 2A



Attention

Please read this manual carefully before using the product and keep it in a safe place.

To avoid the risk of fire, property damage and personal injury, be sure to observe the following safety precautions.

1. Prohibit use when hands are wet.
2. It is prohibited to place the product in a splashing or soaking environment.
3. It is prohibited to block the air inlet and air outlet while the product is in operation.
4. Do not insert foreign bodies into the air inlet and outlet.
5. Do not place the product near a heat source (furnace or heater, etc.) or in a car on a hot day.

Use and storage

1. The air from this product is cold. Please keep your hair away from the nozzle and intake when using it to avoid having your hair sucked in.
2. Do not direct the airflow towards your eyes, ears, mouth, or other body parts when using it.
3. Please do not leave the product unattended during use.
4. Do not store the product in a place where children and pets can access it.
5. Do not store the product in a humid environment or near water containers (such as bathtubs, showers, basins, or other water-holding containers).
6. Do not use the product in environments with high or low temperatures.
7. Store it in a well-ventilated and dry place, away from direct sunlight.

Maintenance and care

1. This product is not waterproof. Please do not use alcohol, nail polish remover, detergent, or other cleaning liquids with cleaning functions to clean this product.
2. We recommend using a clean soft cloth to clean this product.
3. Regularly remove adhesive from the blowing port and intake port.
4. Do not press or rub the intake port and blowing port with your nails or sharp objects.
5. Do not overcharge or over-discharge the battery, otherwise it will damage the battery core.