

# Extra Tall Cat Gate Assembly Instructions



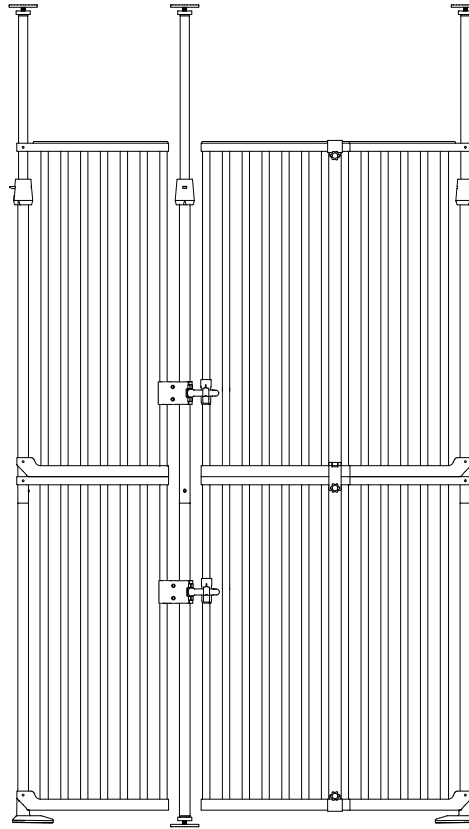
Scan QR code to  
view assembly video

Fit Opening:

About 47.2-50.5 Inch

Fit Height:

About 74.8-98.43 Inch



- Thank you for your purchase. Before using, please read the instruction manual carefully to avoid any accidents.
- Please install the gate on the floor, otherwise, it will get fingers stuck or cause any other accidents.

## Universe Home Inc.

If you have any issues with the product,  
please contact us.

☎ : +1 (877) 313 6212  
(Mon–Fri, 8:00 am – 5:00 pm PT)

@ : info@universeh.com (24/7)

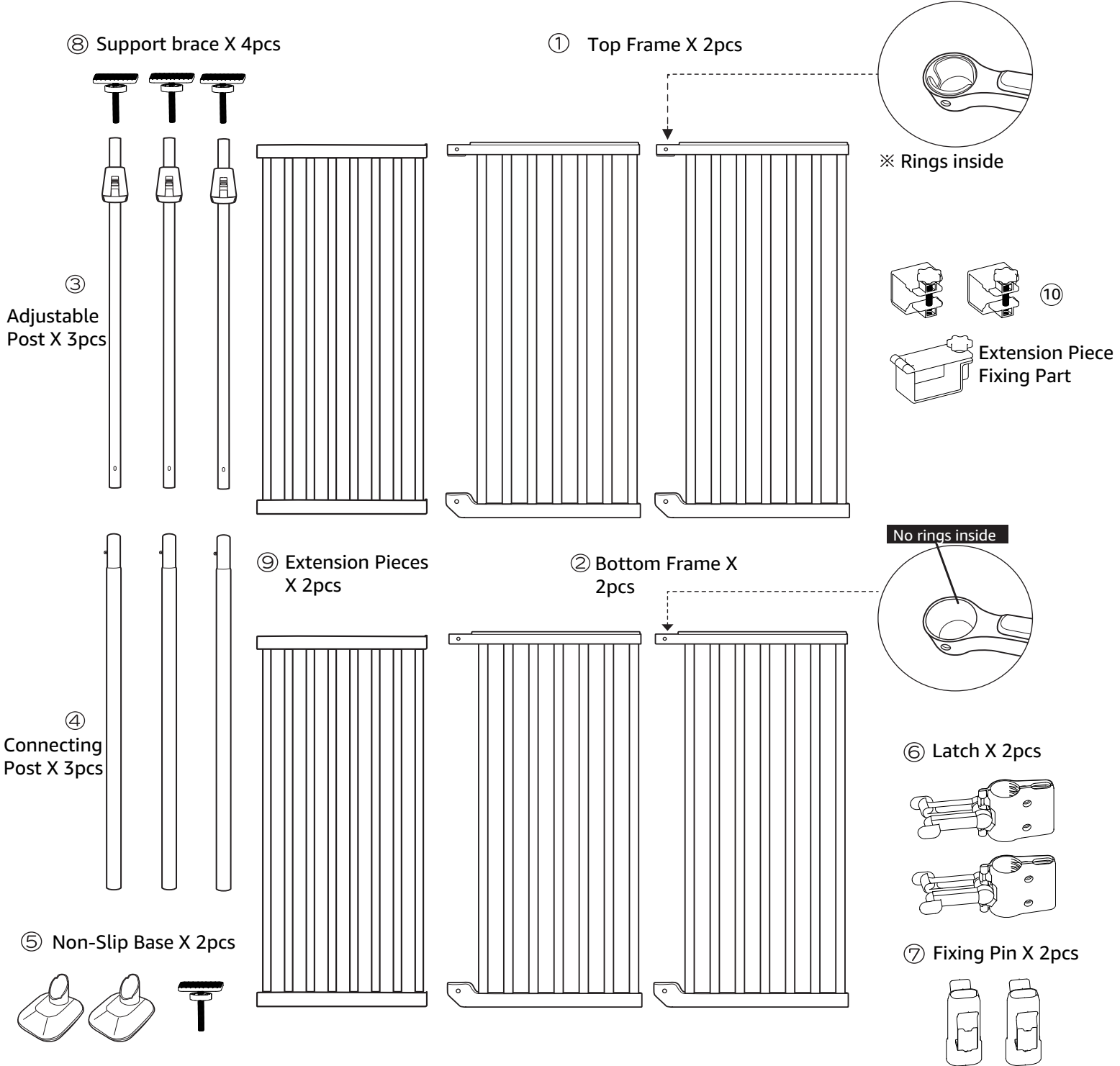
🌐 : unipawspro.com



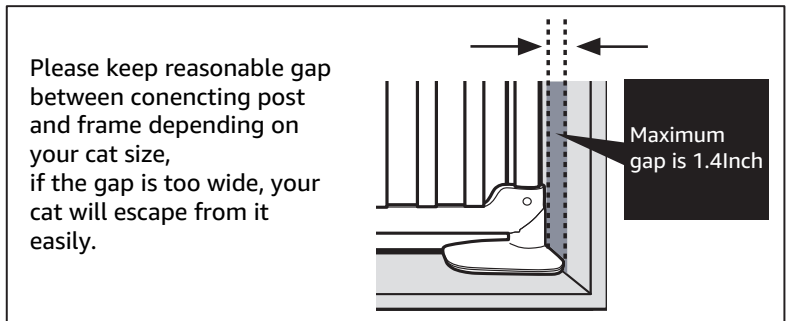
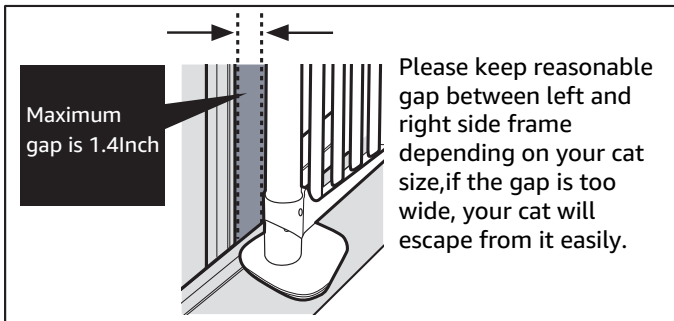
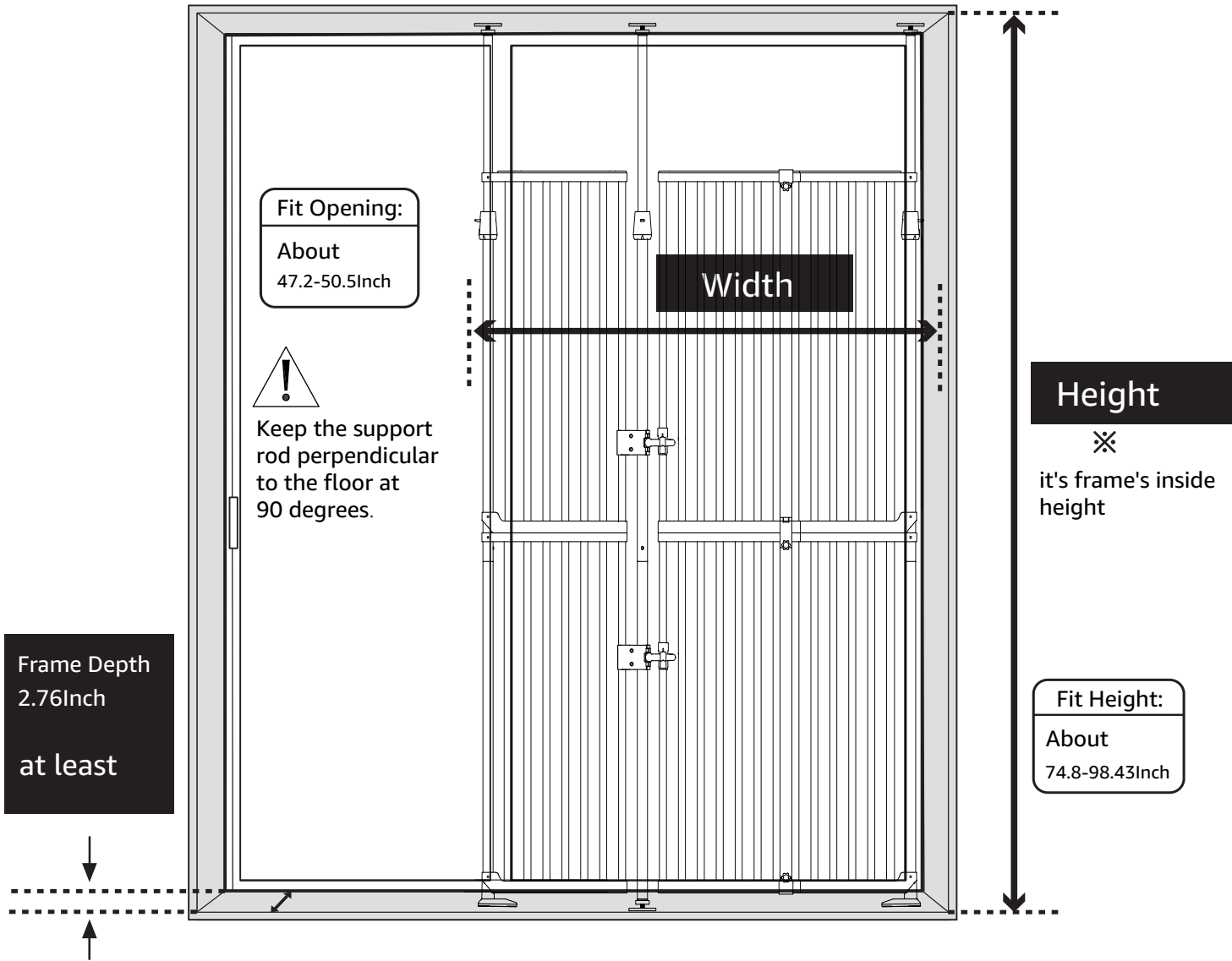
Scan to submit a request  
We'll reply within 1 business day

# Parts

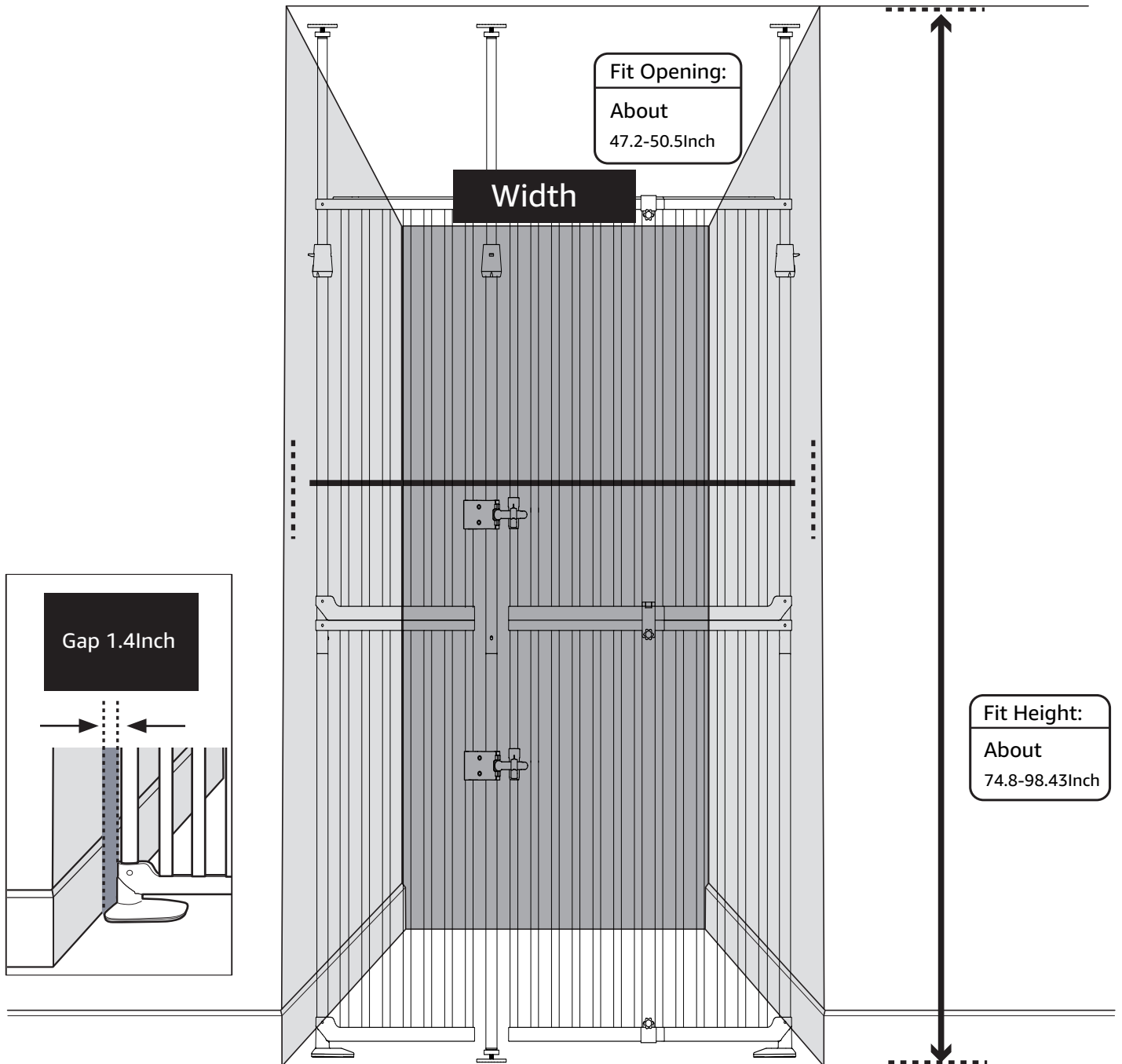
Please confirm all parts are ready for assembly.



When set at door frame

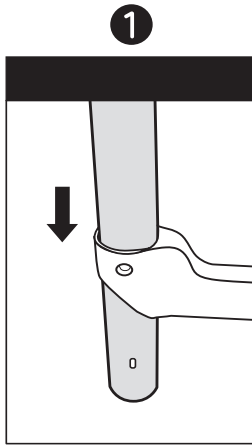
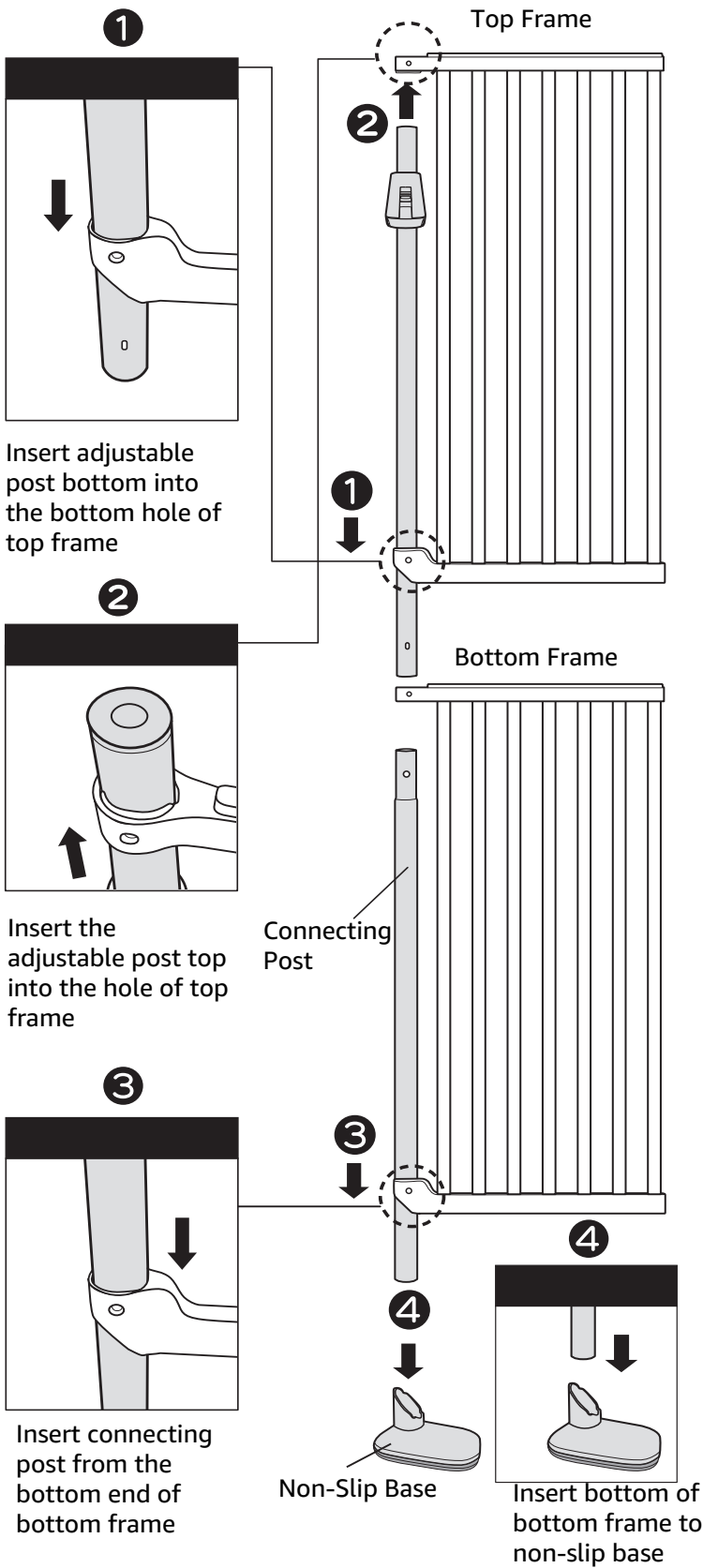


When set at entryway & passage

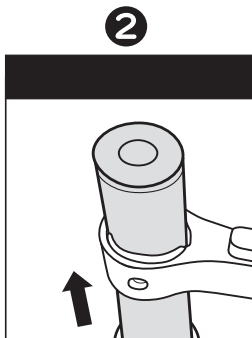


# Assembly Instruction (For post and frame)

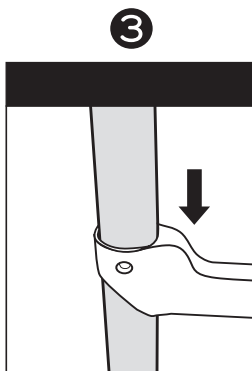
## 1 Connect post and frame( please follow below steps 1 to 8)



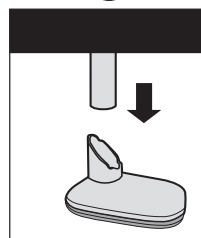
Insert adjustable post bottom into the bottom hole of top frame



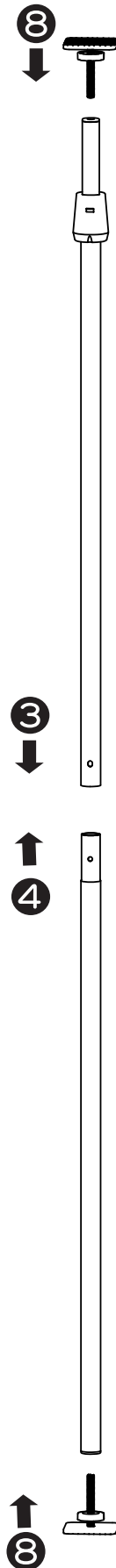
Insert the adjustable post top into the hole of top frame




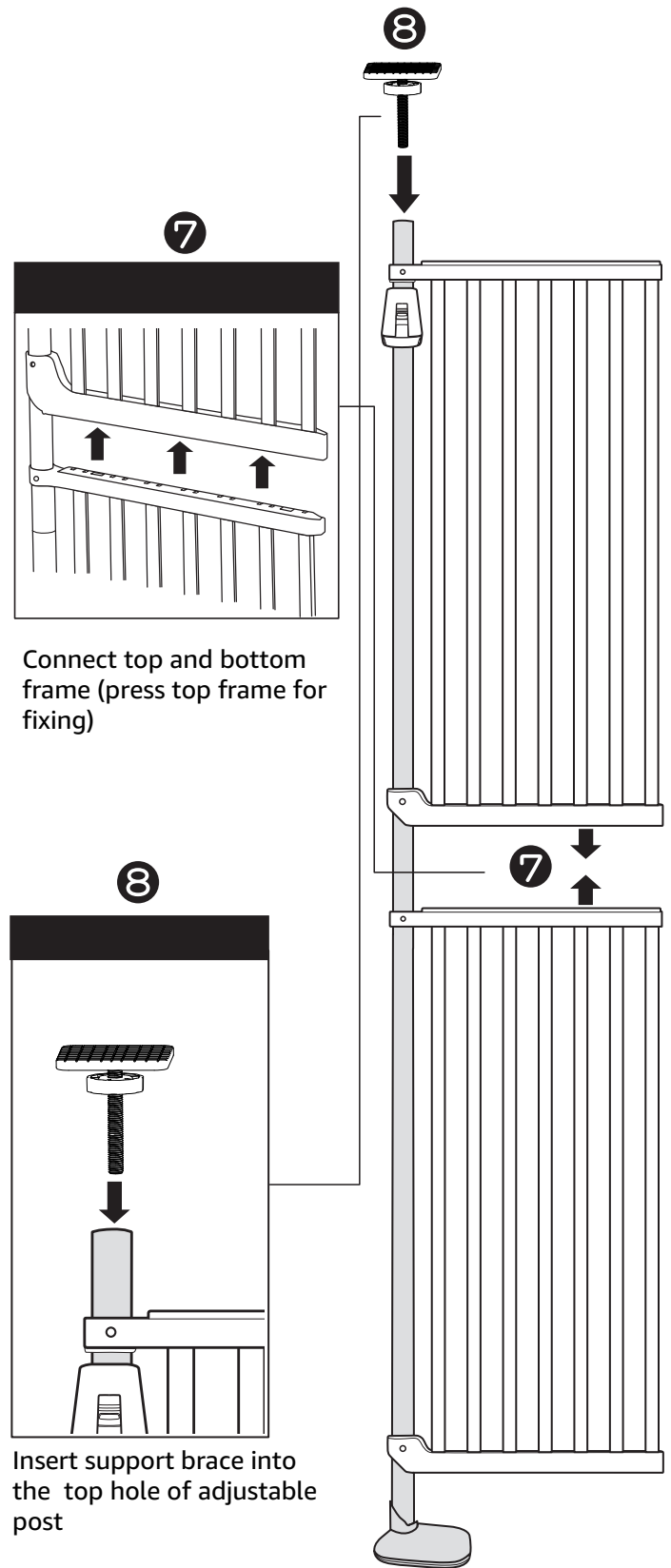
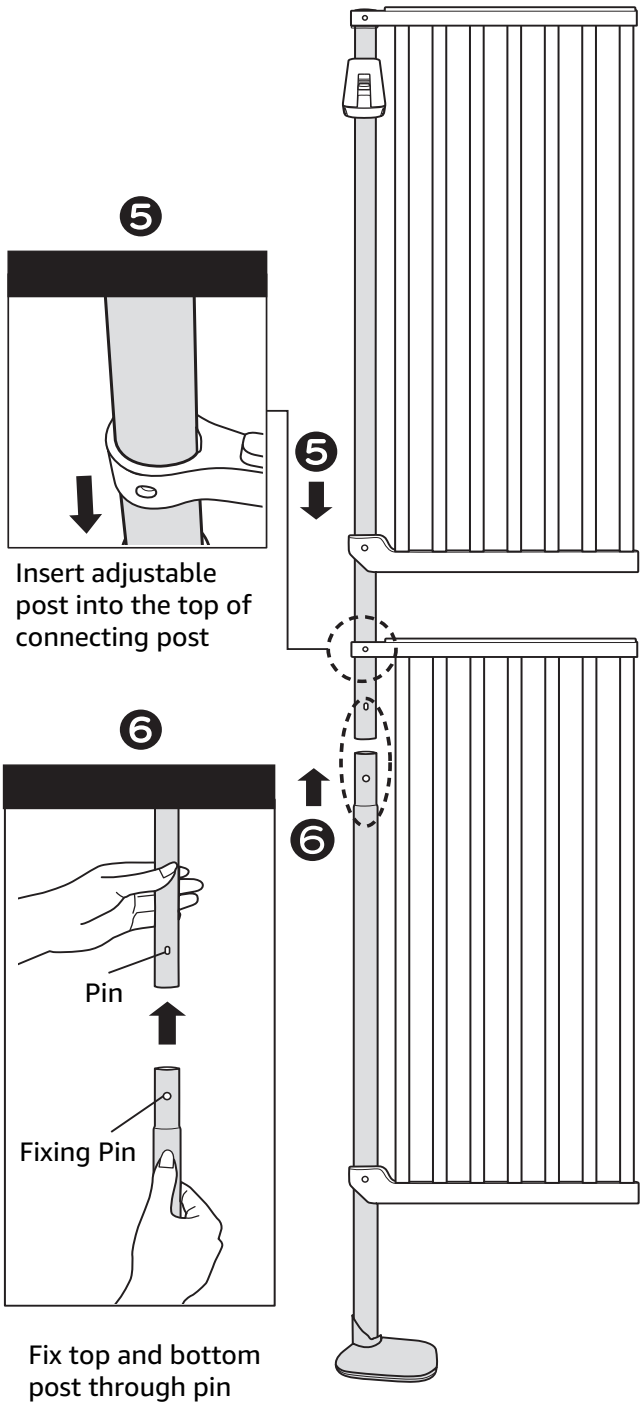
Insert connecting post from the bottom end of bottom frame



Insert bottom of bottom frame to non-slip base



 If you need disassembling, 1# frame can't be teardown until 3# tube is pulled out.

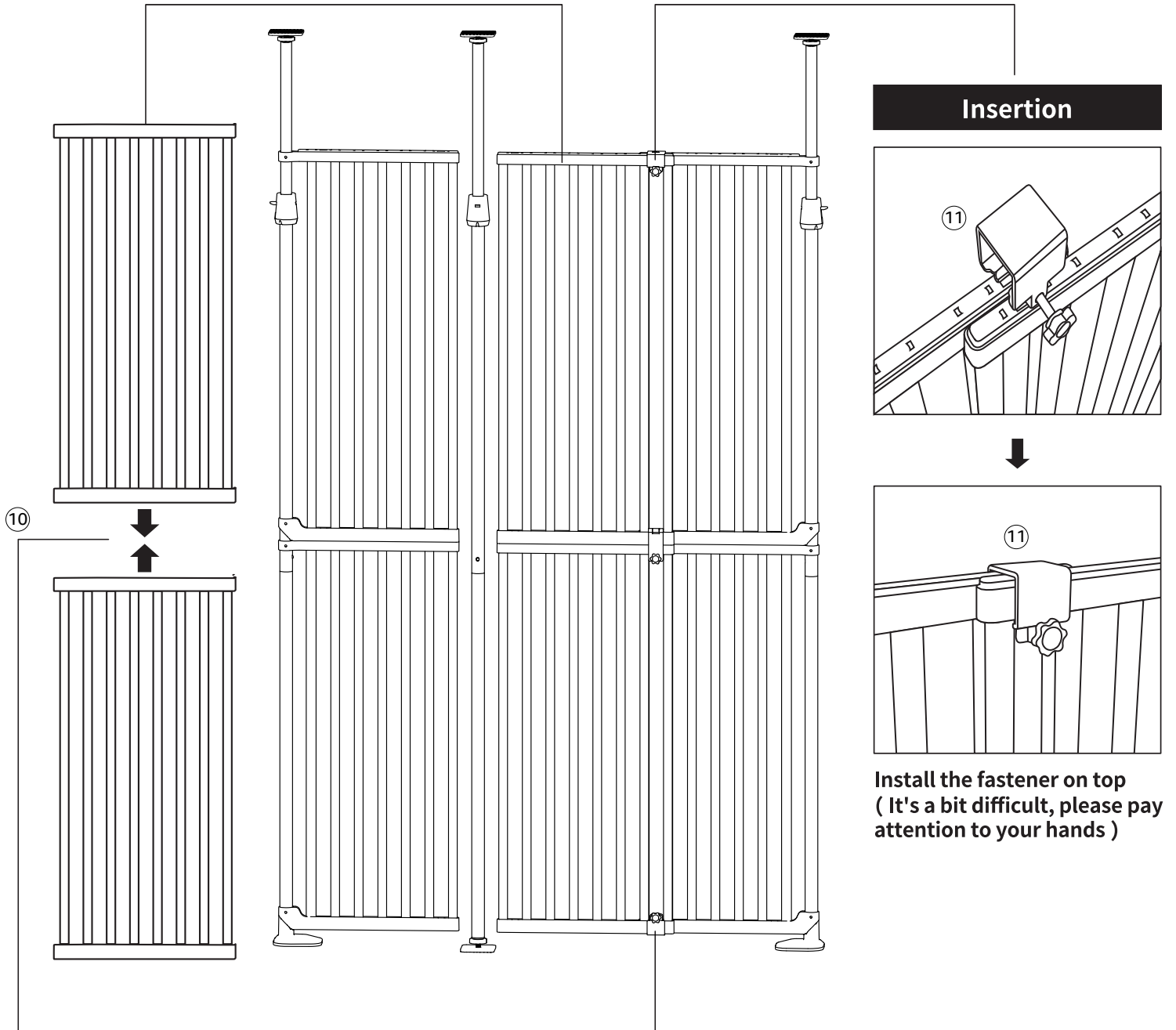


## Assembly Method: 2. Installing Extension Components

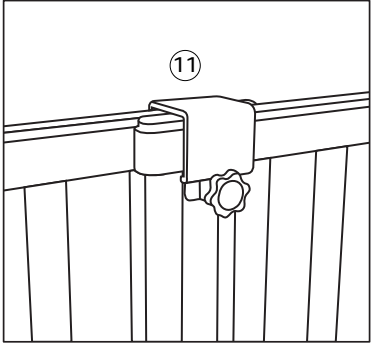
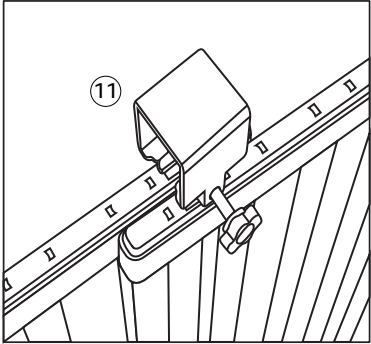
### Required accessories:

2pcs Extension Pieces

3pcs Extension Pieces Fixing Part (1 long and 2 short)

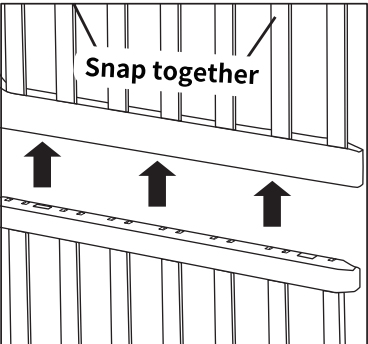


### Insertion



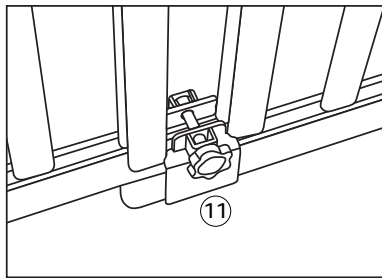
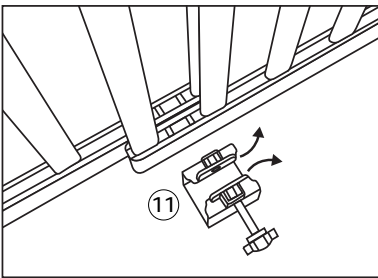
Install the fastener on top  
( It's a bit difficult, please pay attention to your hands )

### Insertion



Connect the upper frame and lower frame.

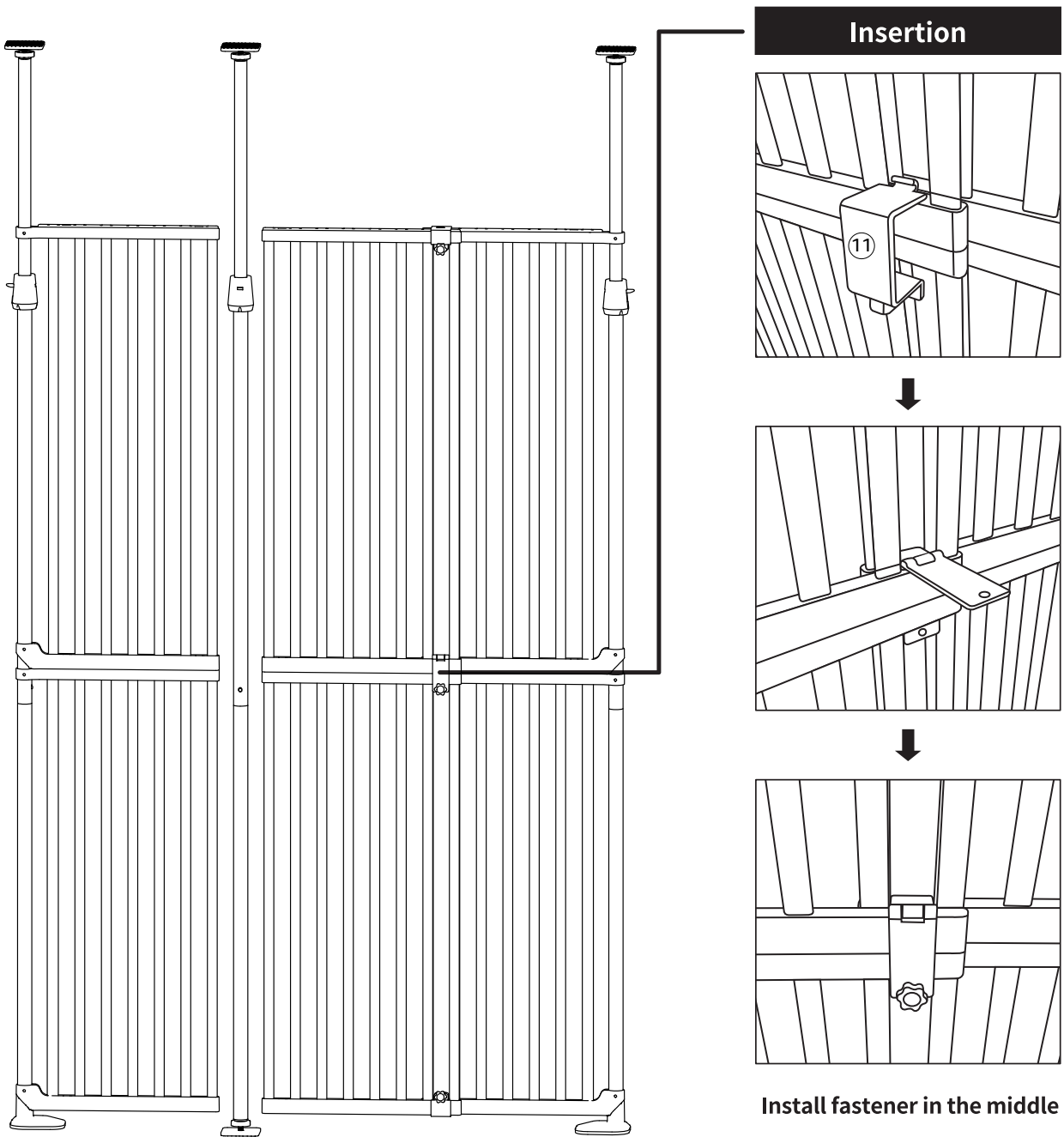
### Insertion



Install the fastener at the bottom  
( It's a bit difficult, please pay attention to your hands )

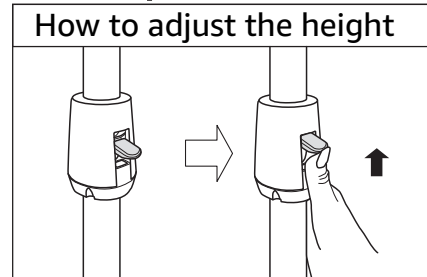
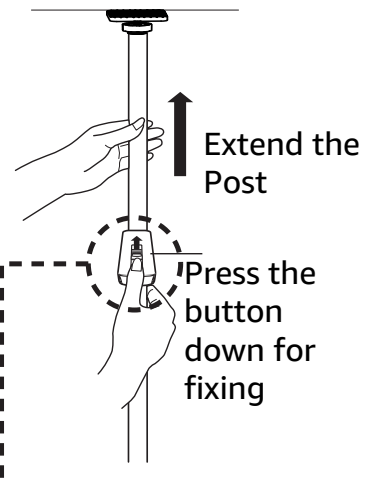
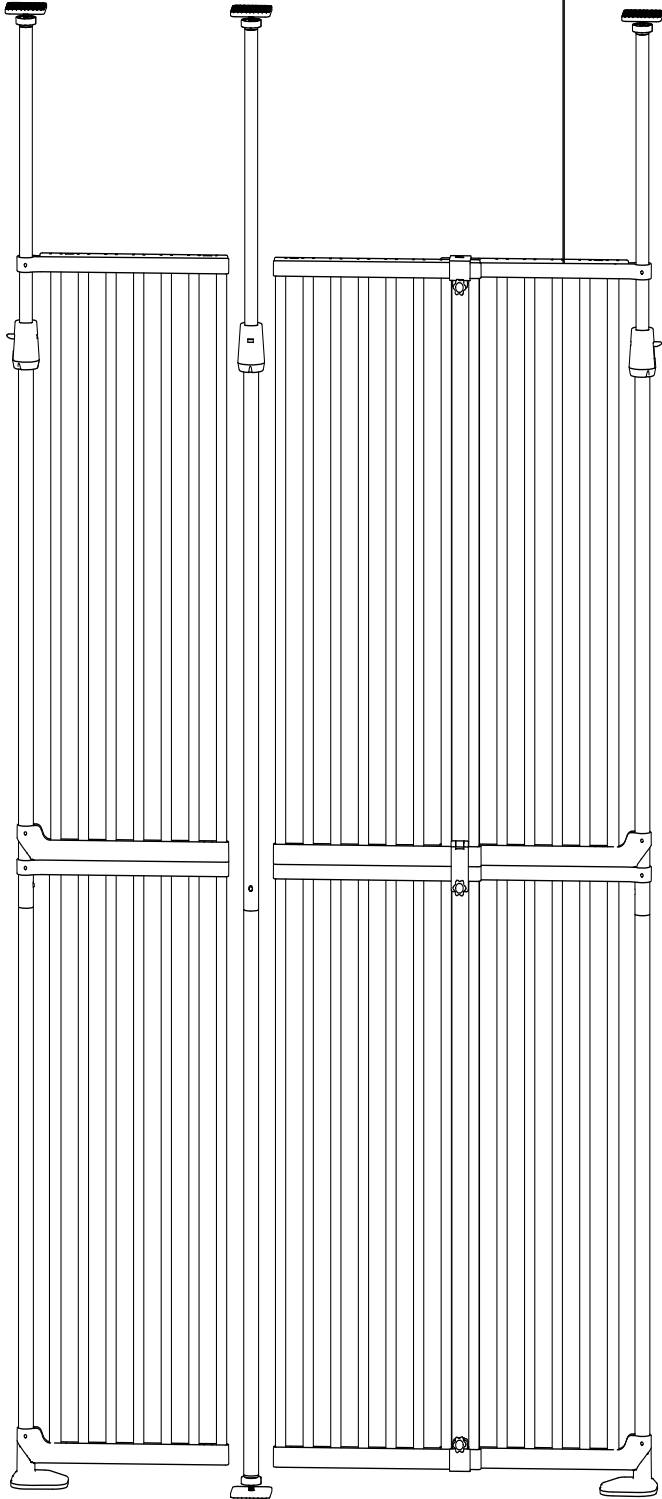
Contact us at: [info@universeh.com](mailto:info@universeh.com)

## Assembly Method: 2. Installing Extension Components



# Assembly Instruction (For post and frame)

※ Please install right side frames like left side



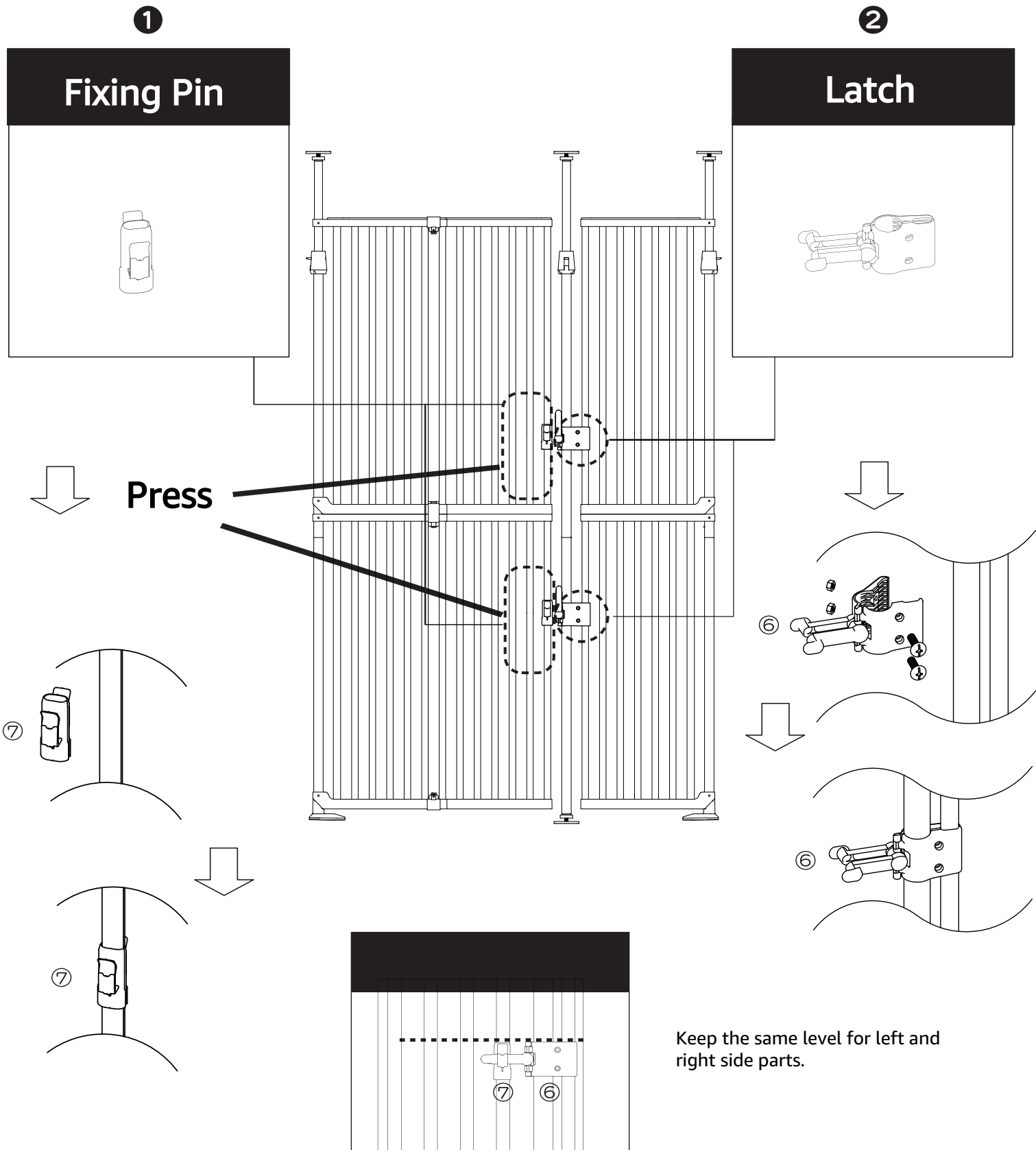
Support brace

Vertical Setting

Twist the circle screw counterclockwise for fixing

# Assembly Instruction (Door and latch)

**2** Install latch and fixing pin to gate as below diagram shown.



# How to open and close the gate door

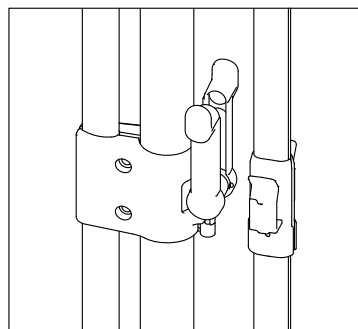
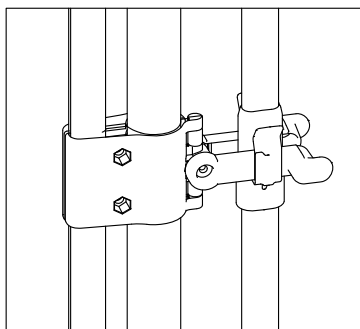
## How to open the door

### 1 Unlock

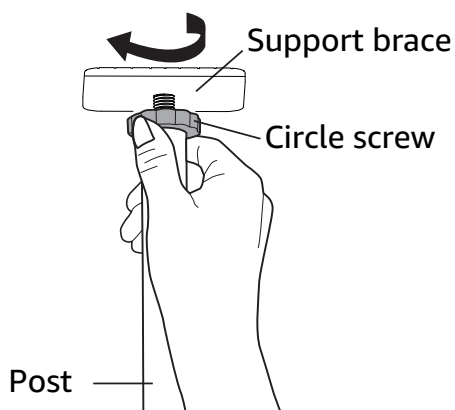
□ Slide the fixing pin

### 2 Lift the latch

□ Open the door with lifted latch



## How to disassemble the gate



1

Twist the circle screw on clockwise, then take off the adjustable post from inserted location.

2

Please disassemble the frame and post in reverse order of how to assemble it. (Please refer to page 7 & 8)

### Warning

Please must disassemble the frame and post in orders, otherwise, wall and ceiling will be damaged.