

HML3

LED High-Performance High Bay

Product Description

Introducing NICOR's latest breakthrough in lighting innovation: the HML3 high bay product line. Unveiling a revolutionary design, this patent-pending marvel combines unrivaled efficiency and peak performance. Experience brilliance beyond measure as its compact form yields an extraordinary light output. DLC 5.1 Premium certification attests to its excellence, offering adjustable wattage, CCT (3500/4000/5000K/5700K), and sensors. Crafted from single-piece, robust cast aluminum, its durability withstands even the harshest conditions, rendering it ideal for warehouses, gymnasiums, and assorted industrial or commercial settings. With an integrated cooling system and a top-mounted wire-way cover for effortless wire access, the HML3 emerges as the embodiment of streamlined functionality. A polyester powder coat finish crowns its aesthetic, culminating in a luminaire masterpiece that seamlessly merges innovation and endurance.

Construction

- Fully cast aluminum body with integrated cooling features
- Top mounted wireway cover for easy wire access
- Polyester powder coat finish

Optical System

- Standard diffused lens
- Optional aisle and wide optics available
- Selectable CCTs of 3500K, 4000K, 5000K, 5700K with >80 CRI

Electrical

- Selectable power levels: (150/120/100W), (320/270/220W), (550/520/480W)
- Operating temperature rating of -22°F to 131°F (-30°C to 55°C)
- Input voltage of 120-277V, 277-480V input option available
- Dimming: 0-10V standard

Controls

- Pre-installed 3.5mm sensor socket
- Field installable multifunction MW or PIR sensor available
- Standard full-range dimming with compatible 0-10VDC dimmers
- 12VDC output provides power to off-board sensors or controls

NLC (Network Lighting Controls)

- Bluetooth Low Energy (BLE) mesh network providing Luminaire Level Lighting Control
- Field installable BLE PIR/Daylight sensor (NLCIND3.5) available
- Configurable with the NICOR NLC app available on iOS and Android devices
- Provides full dimming control with occupancy and daylight harvesting functions

Mounting and Installation

- V-hook and 3' chain mounting system included
- Wireguard option available for increased fixture protection
- Pendant mount and surface mount kits available
- For installations where power surge may be possible, NICOR recommends installing additional surge protection at the fixture or electrical distribution panel

Listings

- cULus1598 Listed for damp locations
- DLC 5.1 Premium
- IP20 environmental rating
- ASHRAE 90.1 compliance when specified with sensor option
- RoHS Compliant: Free from harmful and hazardous materials
- Meets FCC Part 15, Subpart B, Class A standards for conducted and radiated emissions
- TM-21 Reported L70(10k) life >60,000 hours
- LM-79, LM-80 testing performed in accordance with IESNA standards

Warranty

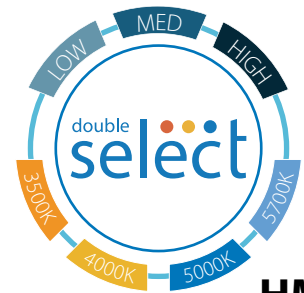
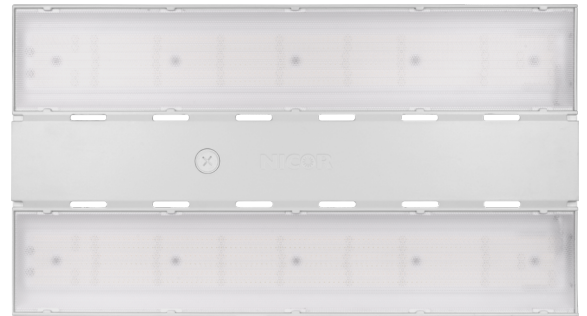
- 5-year limited system warranty standard
- Warranty does not cover product failure due to an overvoltage event (power surge)

Project

Catalog

Type

Date



HML3 LED High-Performance High Bay Wattage Selectable CCT Selectable



*DLC Premium on A Optic only

HML3

LED High-Performance High Bay

Ordering Information									Example: HML3150SUSAS8
Series	Ver.	Wattage Selectable	Input Voltage	CCT Selectable	Distribution	Sensor Socket	CRI	Emergency	Wiring Option
HML	3	150S (150/120/100W)	U (120-277V)	S (35K,40K,50,57K)	A (general - 90°x90°)	S (with socket)	8 (80 CRI)	_Blank (none)	_Blank (none)
		320S (320/270/220W)	H (277-480V) ³		B (wide - 105°x105°)			E18 (18W) ^{1,3,5}	C (Cord-3-wire, 6ft) ⁴
		550S (550/520/480W) ⁷			C (aisle - 45°x100°)			E25 (25W) ^{1,3,5}	C4 (Cord-4-wire, 6ft) ⁵
								E40 (40W) ^{2,3,5}	F (Flex conduit - 6ft) ⁶

Specifications and dimensions subject to change without notice.
 (Note: End user is responsible for proper selection of battery pack to meet NFPA requirements)
 1. Emergency Pack is for 150W models only
 2. Emergency Pack is for 320W model only
 3. Emergency not available on HV fixtures
 4. C Cord is 18/3 wire, 6' long, black. Other lengths available upon request
 5. C4 cord is 18/4 wire, 6' long, black, for use with Emergency enabled fixtures. Other lengths available upon request
 6. Flexible metal conduit is 6' long, 18/3 wire configuration. Other lengths available upon request
 7. Contact factory for lead-time

Accessories

Motion Sensors

Passive Infrared Motion Sensor	H12V2SENSORPIR
Microwave Motion Sensor	H12V2SENSORMW
Remote Control for PIR Sensor	H12V2REMOTE
NICOR Lighting Controls PIR Sensor	NLCIND3.5



H12V2SENSORPIR



H12V2SENSORMW



H12V2REMOTE



NLCIND3.5

Replacement Lens Kits

Wide Optic - 150W model	HML3150-B-OPTIC
Wide Optic - 320W model	HML3320-B-OPTIC
Aisle Optic - 150W model	HML3150-C-OPTIC
Aisle Optic - 320W model	HML3320-C-OPTIC

Wireguard Accessories

Wireguard for HML3150	HML3150WG
Wireguard for HML3320	HML2WG



Wire Guard

HML2WG will come in two pieces per set for each lens.

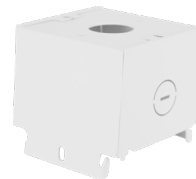
Mounting Accessory Kits

Aircraft Cable Kit (10ft)	ACMK110
Pendant Kit	HML1100-150PEND
Surface Mount Kit	HML100-150SURFACE

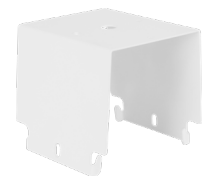
Pendant and surface mount kits compatible to all HML models



ACMK110



HML1100-150PEND



HML100-150SURFACE

HML3

LED High-Performance High Bay

Accessories (continued)

Emergency Battery Accessories

18W Battery Pack (120-347V) HML1EM18WRVWH

25W Battery Pack (120-347V) HML1EM25WRVWH

40W Battery Pack (120-347V) HML1EM40WRVWH

- For installation in the field by the end user
- 18W & 25W Emergency Packs are for 150W models only
- 40W Emergency Pack is for 320W models only
- End user is responsible for proper selection of battery pack to meet NFPA requirements
- Emergency not available on HV fixtures



HML1EM08WRVWH / HML1EM18WRVWH



HML1EM25WRVWH / HML1EM40WRVWH

Field Installed Plug Accessories

15A 125V Straight Bladed Plug 515P

15A 125V Twist Lock Plug L515P

15A 250V Twist Lock Plug L615P

15A 277V Twist Lock Plug L715P

20A 277V Twist Lock Plug L720P

20A 347V Twist Lock Plug L2320P

20A 480V Twist Lock Plug L820P

Plugs not available for CA (4-wire cord) or F (flex conduit) options

High Voltage Transformer (see specsheet for full information)

High Voltage (277-480V) Transformer NST1375HVWH

HML3

LED High-Performance High Bay

Performance Data

Standard Distribution - 150W				
Model Number	CCT	Lumens	Watts	Lumens/Watt
HML3150SUSAS8	3500	13856	100	139
	4000	14386		144
	5000	14179		142
	5700	13956		140
	3500	16627	120	139
	4000	17263		144
	5000	17015		142
	5700	16747		140
	3500	20784	150	139
	4000	21579		144
	5000	21269		142
	5700	20934		140
HML3150SHSAS8 (277-480VAC)	3500	14051	100	140
	4000	14369		144
	5000	14620		146
	5700	14274		143
	3500	16836	120	140
	4000	17216		143
	5000	17517		146
	5700	17104		143
	3500	21363	150	142
	4000	21846		148
	5000	22228		146
	5700	21703		142

Standard Distribution - 320W				
Model Number	CCT	Lumens	Watts	Lumens/Watt
HML3320SUSAS8	3500	31145	220	142
	4000	32130		146
	5000	31824		145
	5700	32160		146
	3500	38224	270	142
	4000	39432		146
	5000	39056		145
	5700	39469		146
	3500	45302	315	144
	4000	46734		148
	5000	46289		147
	5700	46778		149
HML3320SHSAS8 (277-480VAC)	3500	31526	220	143
	4000	32462		148
	5000	32040		146
	5700	32255		147
	3500	38691	270	143
	4000	39839		148
	5000	39322		146
	5700	39586		147
	3500	45856	315	146
	4000	47217		150
	5000	46604		148
	5700	46917		149

Standard Distribution - 550W				
Model Number	CCT	Lumens	Watts	Lumens/Watt
HML3550SUSAS8	3500	68160	480	142
	4000	70080		146
	5000	69600		145
	5700	70080		146
	3500	73840	520	142
	4000	75920		146
	5000	75400		145
	5700	75920		146
	3500	79200	550	144
	4000	81400		148
	5000	80850		147
	5700	81950		149

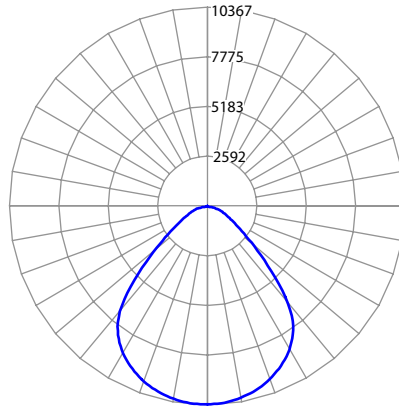
Fixture tested per LM-79-08. Photometric data is of the performance of a representative fixture. Results may vary in the field.

HML3

LED High-Performance High Bay

Photometric Data

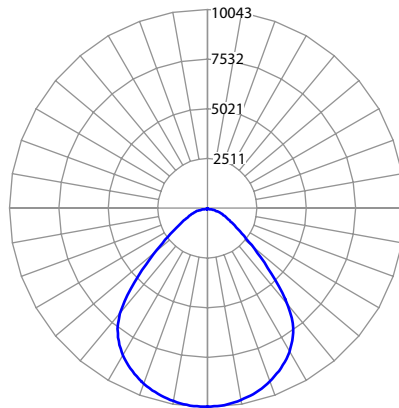
HML3 150W 5K	
Input Voltage (VAC)	120-277
System Level Power (W)	148.4
Delivered Lumens (Lm)	21269
System Efficacy (Lm/W)	143.3
Correlated Color Temp (K)	5106
Color Rendering Index (CRI)	84
Horizontal Beam Angle (°)	88.8
Vertical Beam Angle (°)	89.9
Spacing Criteria (0-180)	1.24
Spacing Criterion (90-270)	1.24



Cone of Light Tabulation		
Mounted height (Feet)	Footcandles Beam Center	Diameter (Feet)
15	46.0	29.4
17	35.8	33.3
20	25.9	39.2
23	19.5	45.0
25	16.5	49.0
28	13.1	54.8
30	11.4	58.8

Data Multipliers				
	3500K	4000K	5000K	5700K
100W	0.651	0.676	0.667	0.656
120W	0.782	0.812	0.800	0.787
150W	0.977	1.015	1.000	0.984

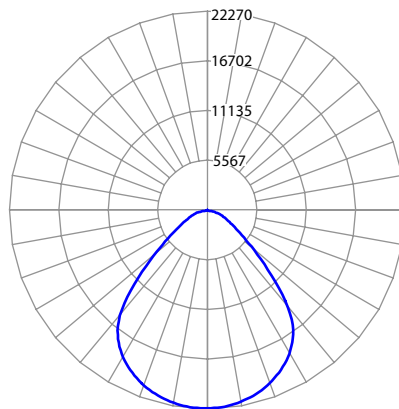
HML3 150W 5K HV	
Input Voltage (VAC)	277-480
System Level Power (W)	151.8
Delivered Lumens (Lm)	22228
System Efficacy (Lm/W)	146.4
Correlated Color Temp (K)	4975
Color Rendering Index (CRI)	84
Horizontal Beam Angle (°)	88.8
Vertical Beam Angle (°)	89.9
Spacing Criteria (0-180)	1.24
Spacing Criterion (90-270)	1.24



Cone of Light Tabulation		
Mounted height (Feet)	Footcandles Beam Center	Diameter (Feet)
15	45.8	29.4
17	34.7	33.3
20	25.0	39.2
23	18.9	45.0
25	16.0	49.0
28	12.7	54.8
30	11.1	58.8

Data Multipliers				
	3500K	4000K	5000K	5700K
100W	0.632	0.646	0.658	0.642
120W	0.757	0.775	0.788	0.769
150W	0.961	0.983	1.000	0.976

HML3 320W 5K	
Input Voltage (VAC)	120-277
System Level Power (W)	314.0
Delivered Lumens (Lm)	46289
System Efficacy (Lm/W)	147.4
Correlated Color Temp (K)	5250
Color Rendering Index (CRI)	83
Horizontal Beam Angle (°)	89.8
Vertical Beam Angle (°)	90.7
Spacing Criteria (0-180)	1.26
Spacing Criterion (90-270)	1.24



Cone of Light Tabulation		
Mounted height (Feet)	Footcandles Beam Center	Diameter (Feet)
15	98.9	29.9
17	77.0	33.9
20	55.6	39.9
23	42.0	45.8
25	35.5	49.8
28	28.3	55.8
30	24.6	59.8

Data Multipliers				
	3500K	4000K	5000K	5700K
220W	0.673	0.694	0.688	0.695
270W	0.826	0.852	0.844	0.853
320W	0.979	1.010	1.000	1.011

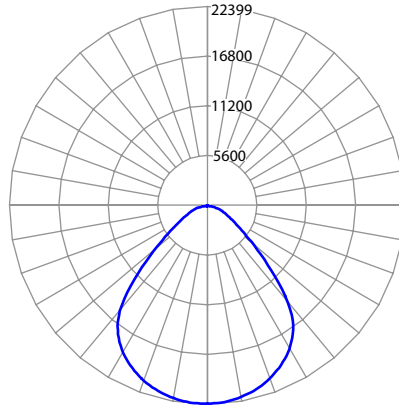
Fixture tested per LM-79-08. Photometric data is of the performance of a representative fixture. Results may vary in the field.

HML3

LED High-Performance High Bay

Photometric Data

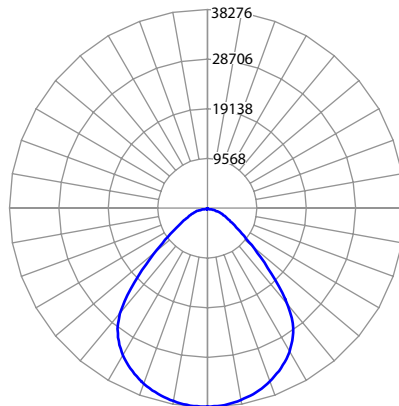
HML3 320W 5K HV	
Input Voltage (VAC)	277-480
System Level Power (W)	314.3
Delivered Lumens (Lm)	46603
System Efficacy (Lm/W)	148.3
Correlated Color Temp (K)	5242
Color Rendering Index (CRI)	83
Horizontal Beam Angle (°)	89.8
Vertical Beam Angle (°)	90.7
Spacing Criteria (0-180)	1.26
Spacing Criterion (90-270)	1.24



Cone of Light Tabulation		
Mounted height (Feet)	Footcandles Beam Center	Diameter (Feet)
15	99.5	29.9
17	77.4	33.9
20	55.9	39.9
23	42.2	45.8
25	35.7	49.8
28	28.4	55.8
30	24.7	59.8

Data Multipliers				
	3500K	4000K	5000K	5700K
220W	0.676	0.697	0.687	0.692
270W	0.830	0.855	0.844	0.849
320W	0.984	1.013	1.000	1.007

HML3 550W 5K	
Input Voltage (VAC)	120-277
System Level Power (W)	550.0
Delivered Lumens (Lm)	80850
System Efficacy (Lm/W)	147.0
Correlated Color Temp (K)	5143
Color Rendering Index (CRI)	83
Horizontal Beam Angle (°)	89.8
Vertical Beam Angle (°)	90.7
Spacing Criteria (0-180)	1.26
Spacing Criterion (90-270)	1.24



Cone of Light Tabulation		
Mounted height (Feet)	Footcandles Beam Center	Diameter (Feet)
15	170.6	29.4
17	132.8	33.3
20	95.9	39.2
23	72.4	45.0
25	61.2	49.0
28	48.8	54.8
30	42.4	58.8

Data Multipliers				
	3500K	4000K	5000K	5700K
480W	0.843	0.867	0.861	0.867
520W	0.913	0.939	0.933	0.939
550W	0.980	1.007	1.000	1.014

Fixture tested per LM-79-08. Photometric data is of the performance of a representative fixture. Results may vary in the field.

HML3

LED High-Performance High Bay

Sensors and Dimmers

H12V2SENSORPIR

See the individual spec sheet for further information

- Field installed 12VDC sensor
- Infrared motion detector with built in daylight sensor
- Remote control programmable
- Highly configurable:
 - Detection area
 - Stand-by period
 - Hold time
 - Stand-by dimming
 - Dimming level
 - Daylight harvesting threshold
- Max mounting height: 40ft (12m)
- IP65 Rated



H12V2SENSORMW

See the individual spec sheet for further information

- Field installed 12VDC sensor
- Microwave motion detector with built in daylight sensor
- Remote control programmable
- Highly configurable:
 - Detection area
 - Stand-by period
 - Hold time
 - Stand-by dimming
 - Dimming level
 - Daylight harvesting threshold
- Max mounting height: 50ft (15m)
- IP65 Rated



H12V2REMOTE

See the individual spec sheet for further information

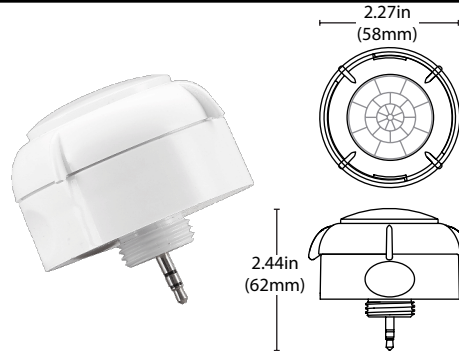
- Allows programming of MW or PIR sensors
- Allows adjustment of:
 - Brightness
 - Stand-by dimming level
 - Hold time
 - Stand-by time
 - Sensor Sensitivity
 - Stand-by dimming
 - Daylight harvesting threshold



NLC Bluetooth PIR/Daylight Sensor (NLCIND3.5)

See the individual spec sheet for further information

- Field installed 12VDC sensor
- Infrared motion detector with built in daylight sensor
- Commissioned with NLC App
- Highly configurable:
 - Occupancy/Vacancy Detection
 - Full Range Dimming (0-10V)
 - Daylight Harvesting
 - Scene Control
 - High-End Trim
 - Full Networking
- Max mounting height: 40ft (12m)
- IP65 Rated



Recommended Dimmers*

Lutron NTSTV
Lutron DVSTV
Cooper SF10P
Legrand RH4FBL3PW

*Not a complete list. Check compatibility before installation.

12VDC Output

There is an additional 12VDC output on the driver. This output can be used to provide power to external low voltage sensors or controls. Do not use the 12VDC output if a sensor is installed in the socket.

Note: When using H12V sensors, set the fixture Wattage Selection Switch to the highest wattage. Lower wattages can then be set via the H12V Remote Control.

HML3

LED High-Performance High Bay

Dimensions

Product Measurements		
	150W	320W
Length:	14.1 in. (360mm)	23.0 in. (585mm)
Width:	9.9 in. (253mm)	12.6 in. (320mm)
Height:	1.8 in. (48mm)	1.95 in. (49.5mm)

