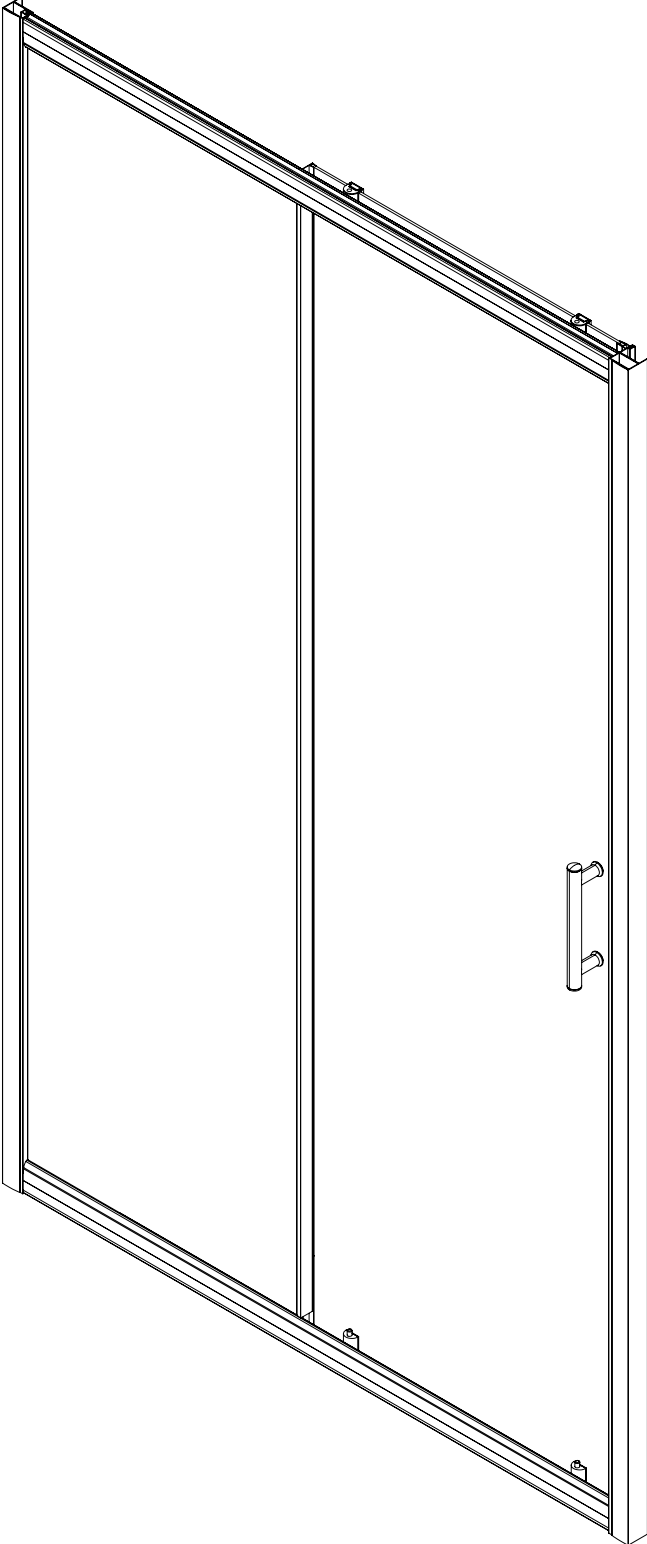
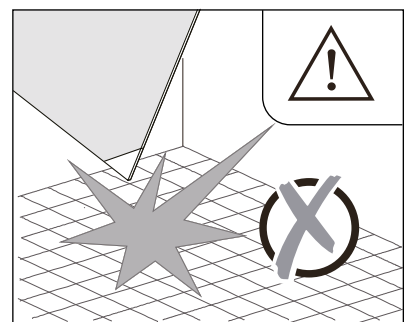
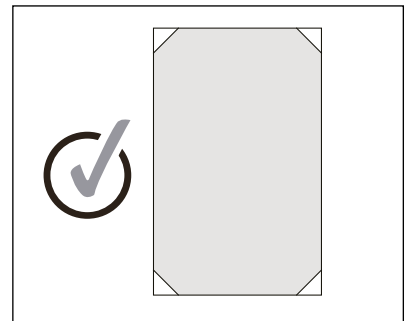
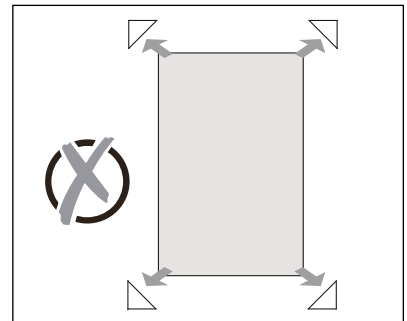
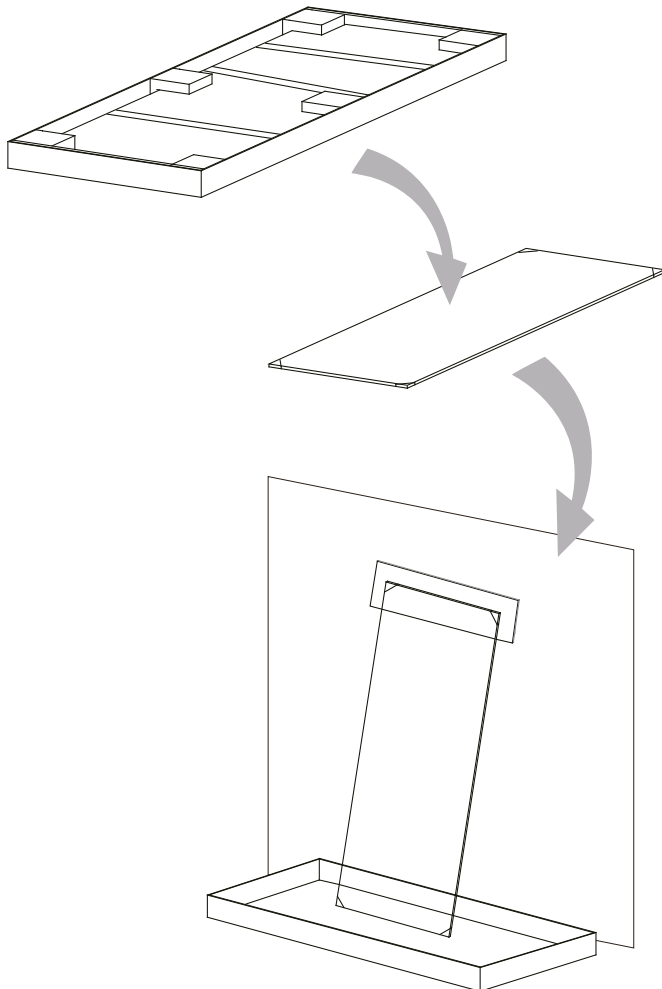
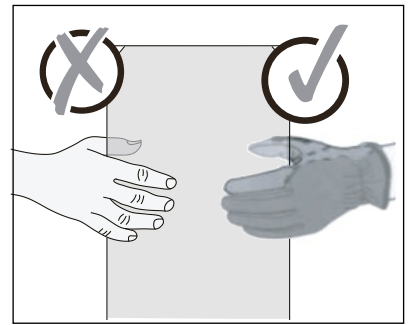
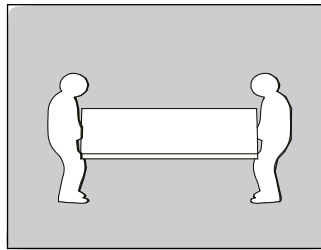
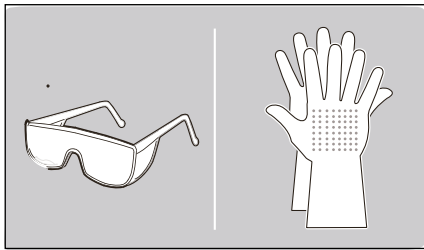
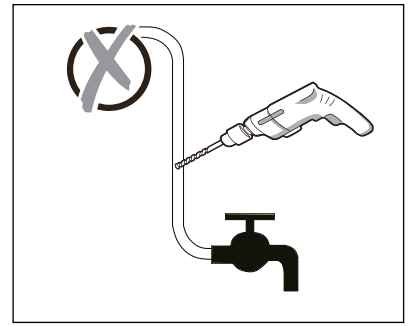
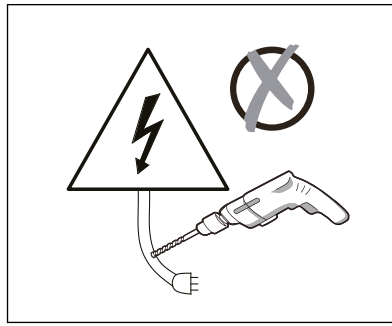
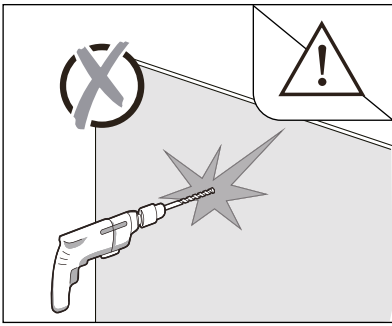
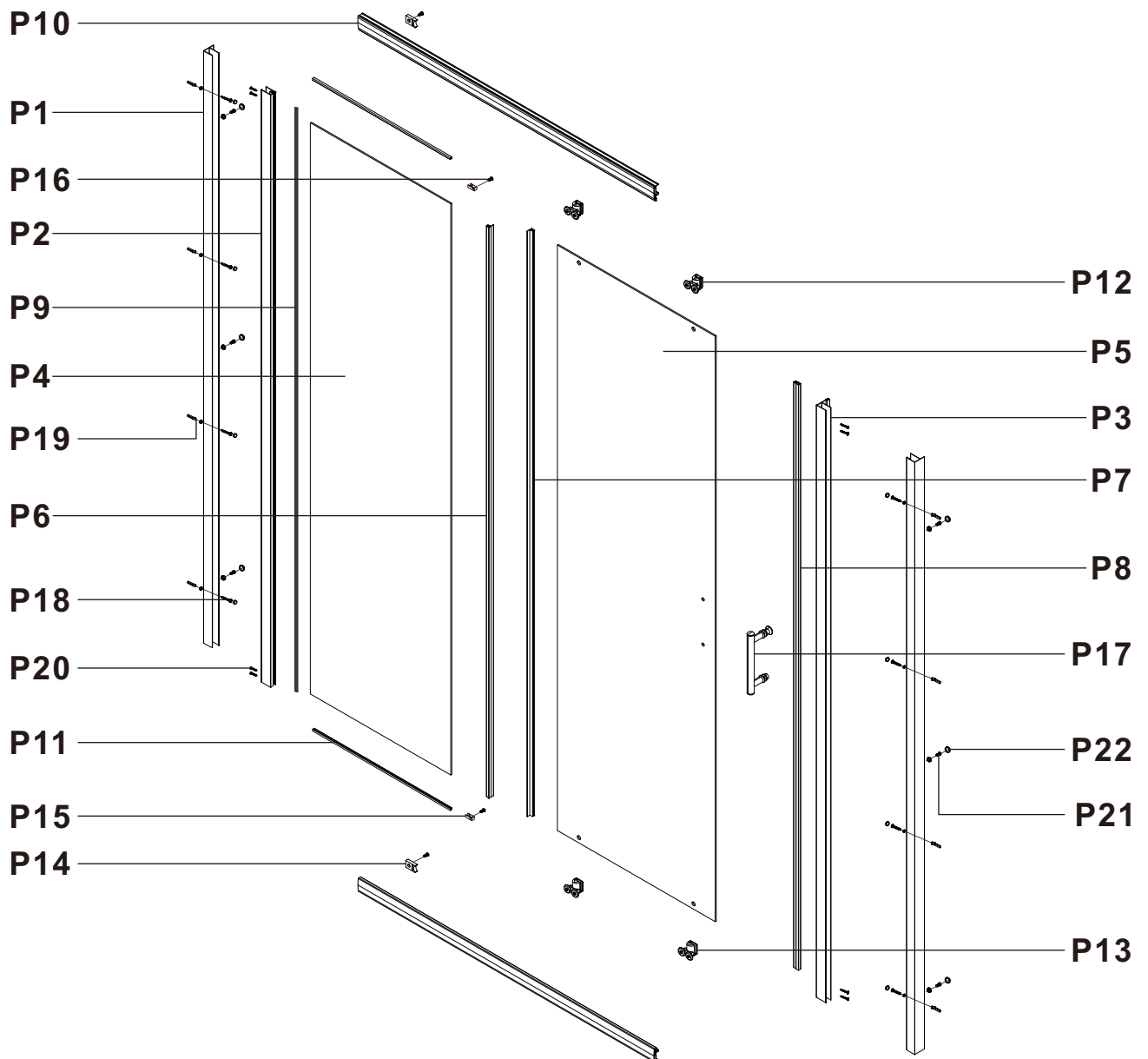


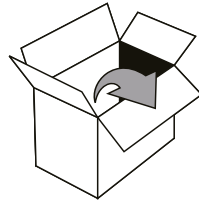
RDY05B





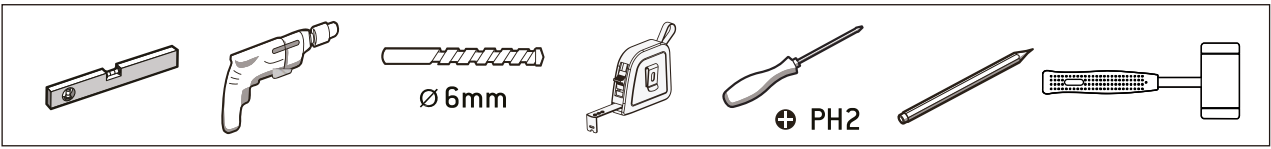
The default adjustable size is 0.6 inches on each side.  
If cutting is required, only the movable door glass side can be cut,  
and it is recommended that the cutting size should not exceed 3 inches.



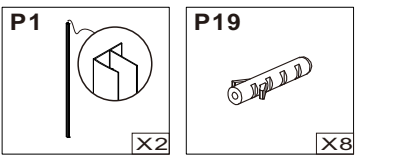
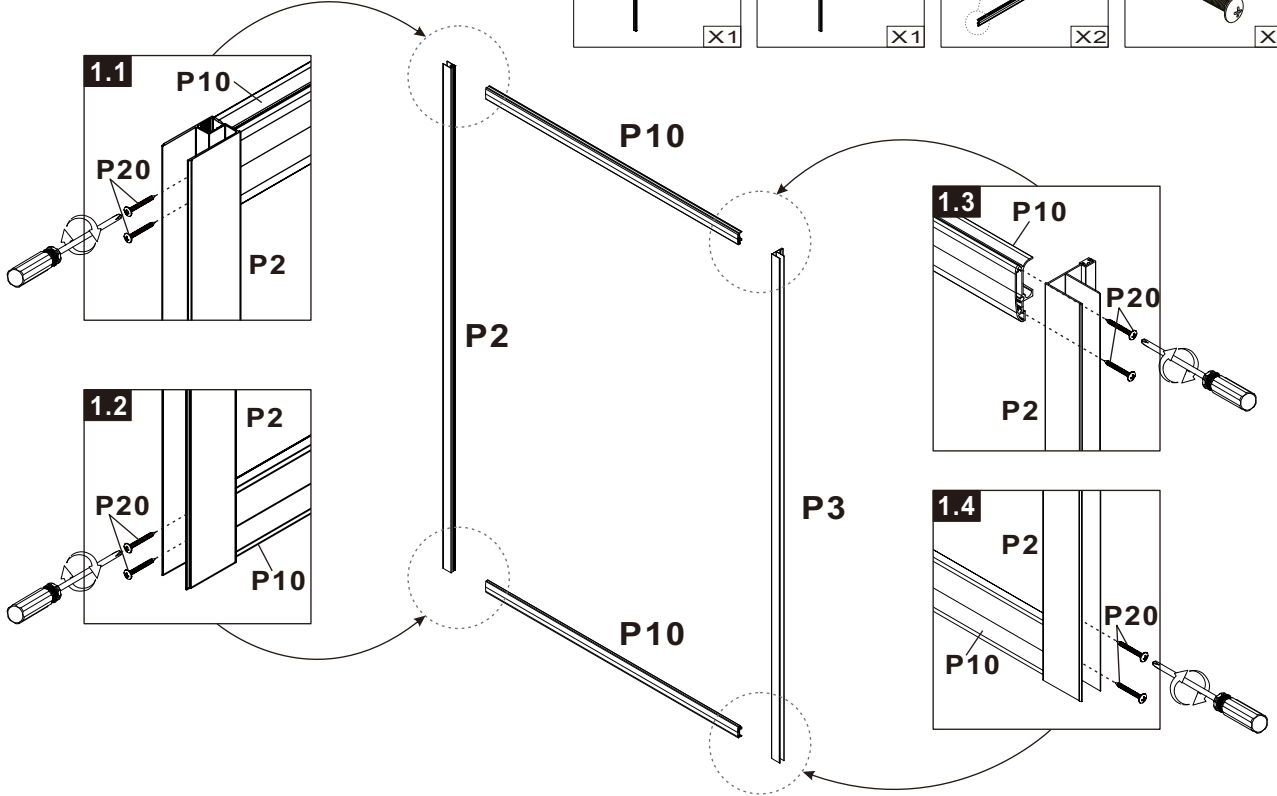
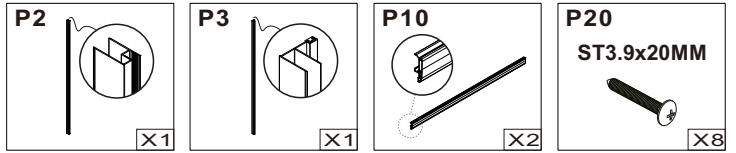


<b>P1</b>  X2	<b>P2</b>  X1	<b>P3</b>  X1	<b>P4</b>  X1
<b>P5</b>  X1	<b>P6</b>  X1	<b>P7</b>  X1	<b>P8</b>  X1
<b>P9</b>  X1	<b>P10</b>  X2	<b>P11</b>  X2	<b>P12</b>  X2
<b>P13</b>  X2	<b>P14</b>  X2	<b>P15</b>  X1	<b>P16</b> ST4x11MM  X2
<b>P17</b>  X1	<b>P18</b> ST3.5x30MM  X8	<b>P19</b>  X8	<b>P20</b> ST3.9x20MM  X8
<b>P21</b> ST4x10MM  X8	<b>P22</b>  X14		

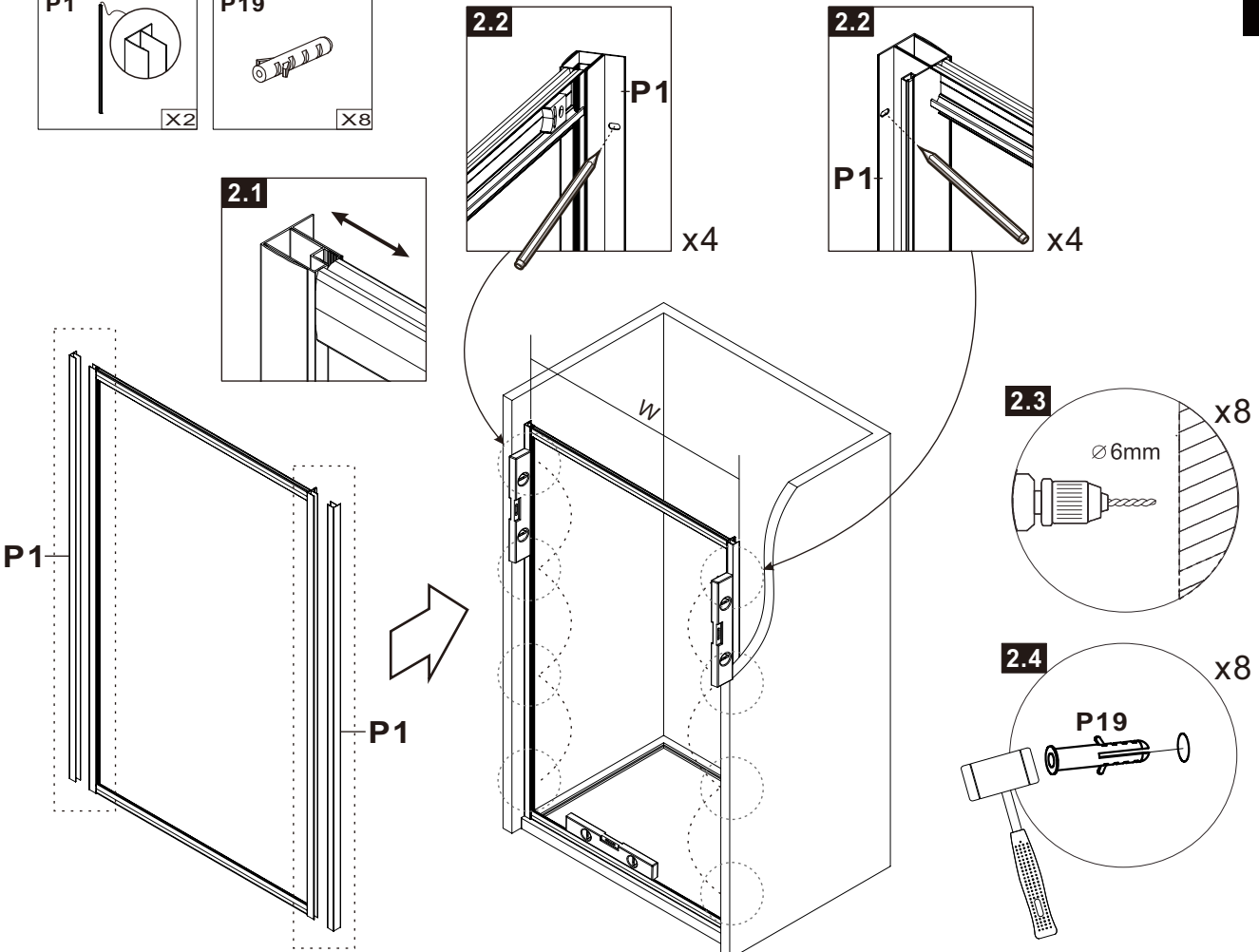
 Ø 6mm	
 ⊕ PH2	
 Ø 3mm	



**1** Make sure the screws and screw holes are aligned during assembling the frames.

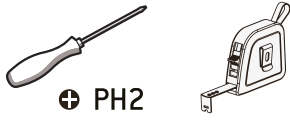


**2**



Assemble the frames and use a level to measure the left, right and bottom to ensure that the wall is flat. Then use a pencil to position P1 frame and the wall then install the expansion screws.

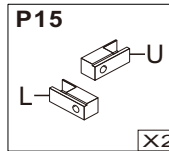
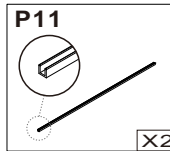
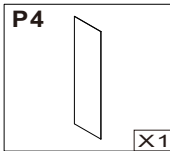
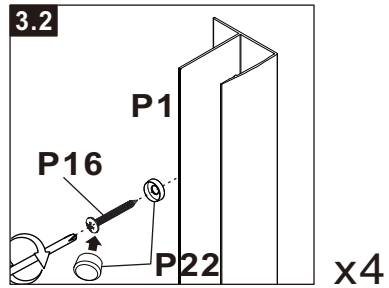
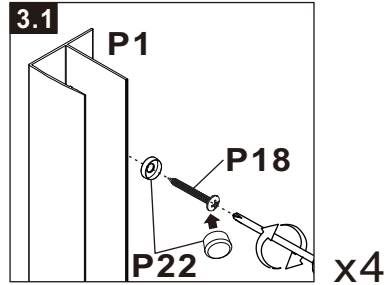
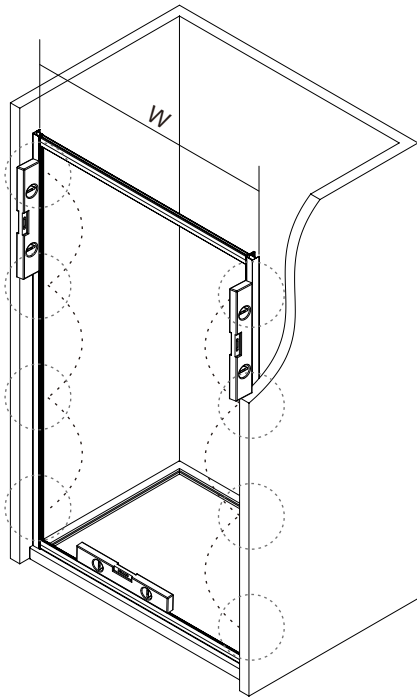
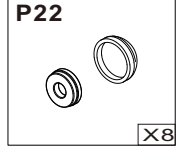
6



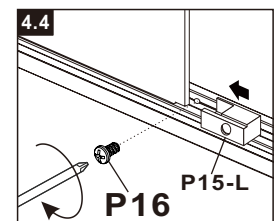
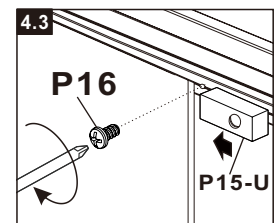
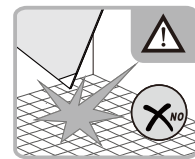
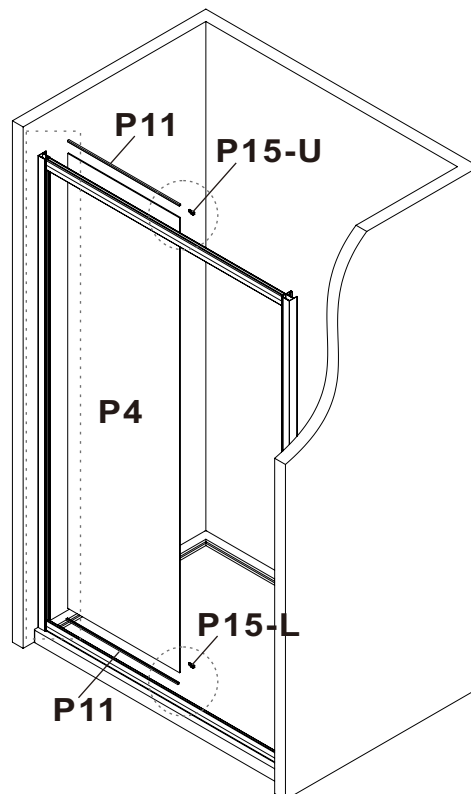
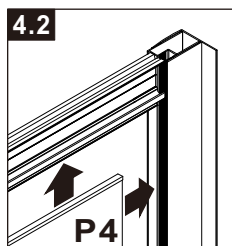
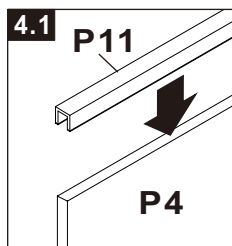
⊕ PH2

### 3

Screw the frames P1 with P22(gasket)+P18+P22(cap)



### 4

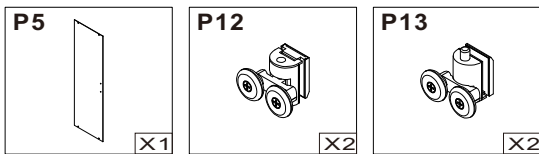
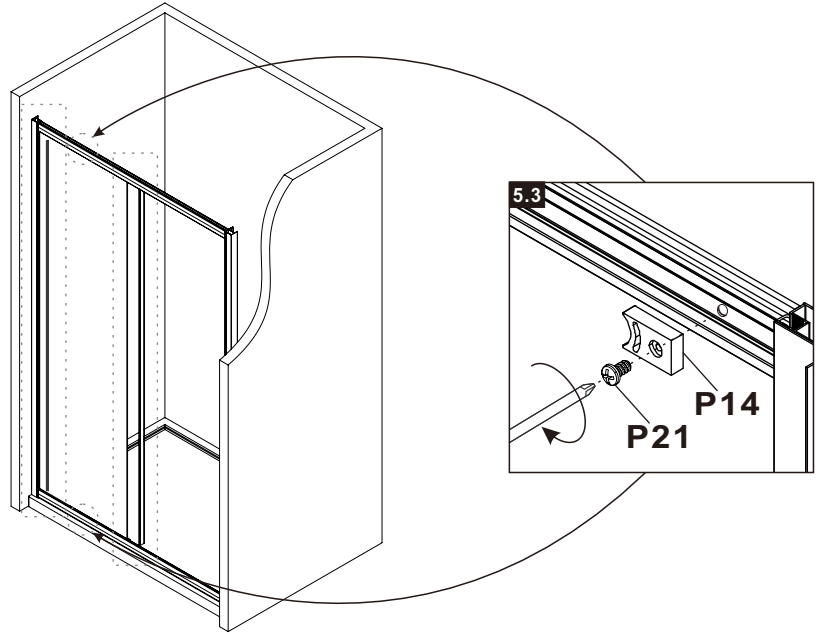
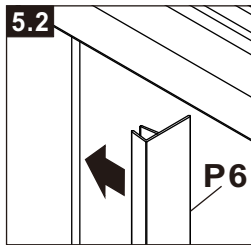
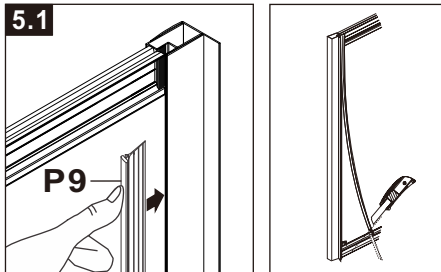
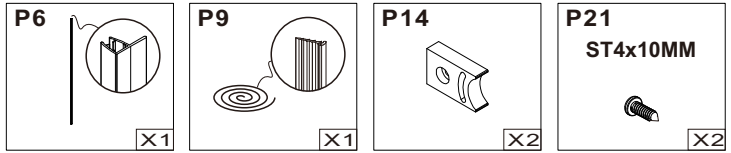


During installing the glass and the blocks(P15), be careful to avoid collision between the glass corners and the ground, which may cause the glass to break.



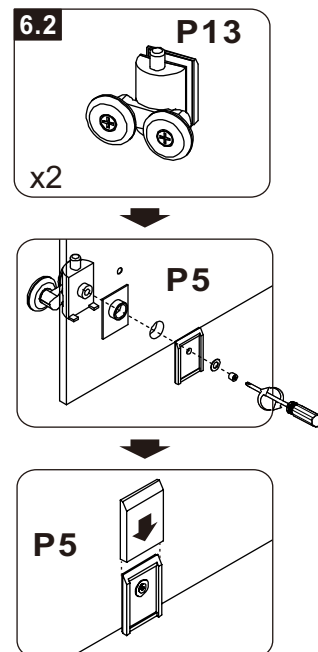
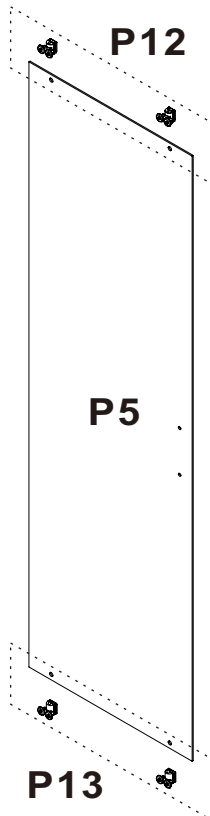
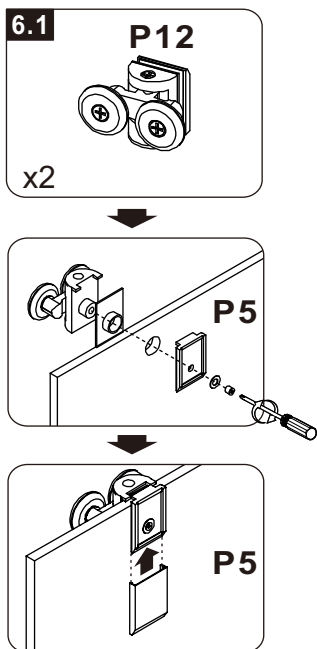
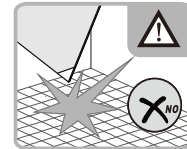
**5**

Assemble the sealing strip by pressing, and cut the excess sealing strip after adjustment; then assemble the strip P6 and the positioning block P14.



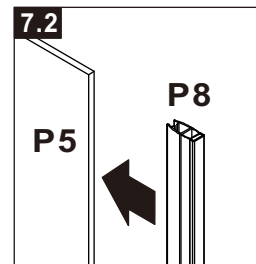
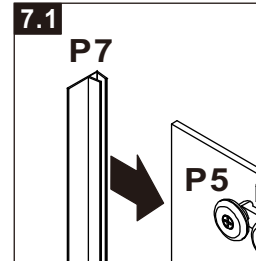
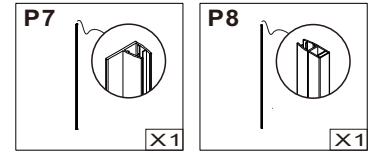
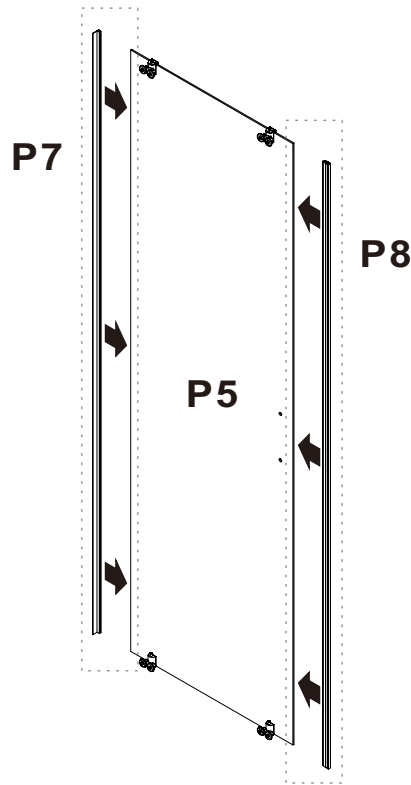
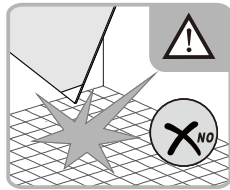
Assemble the wheels. Note that P12 is the upper wheel and P13 is the lower wheel (with adjustment buttons).

**6**





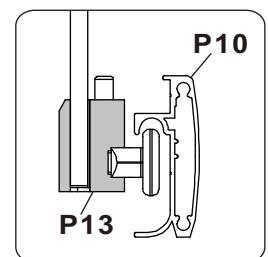
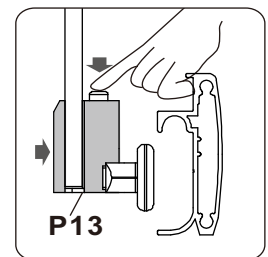
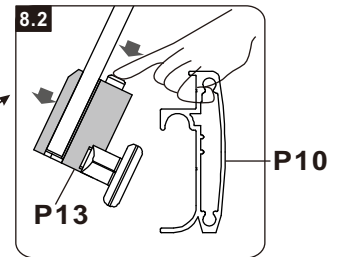
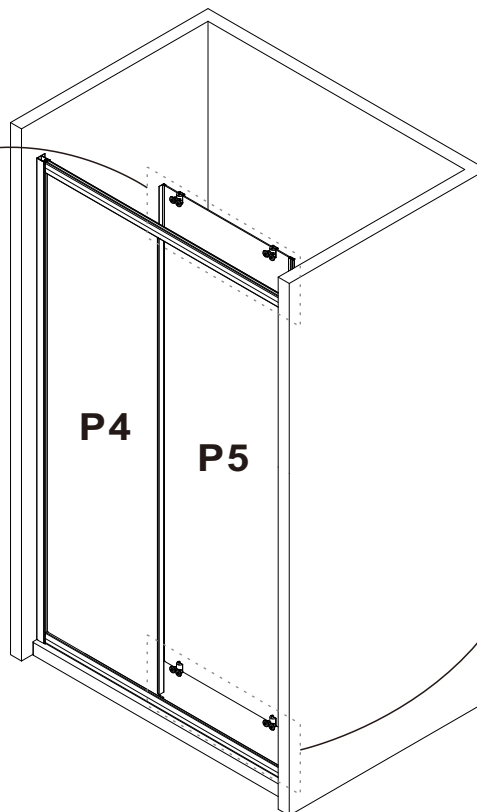
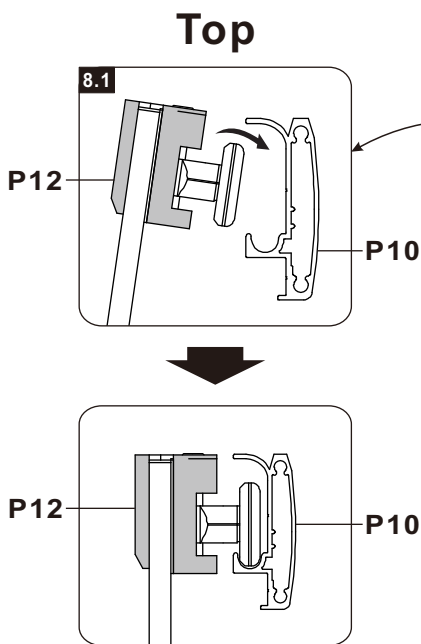
**7** Install sealing strip P7 and magnetic strip P8



**8**

Assemble the sliding door: first hang the upper rollers P12, then hang the lower rollers P13. The lower rollers need to press the button to snap in place.

**Bottom**



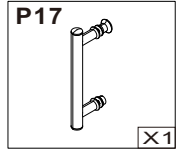


Ø3mm

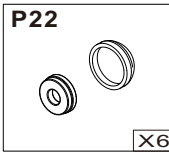
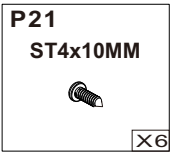
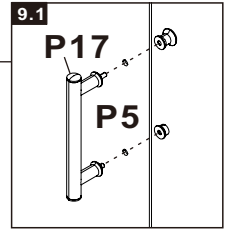
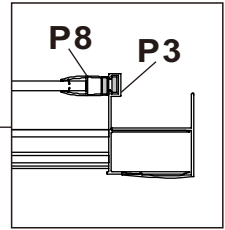
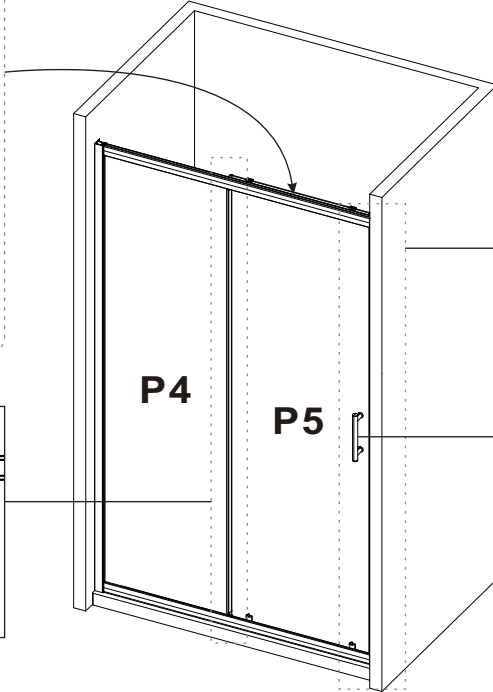
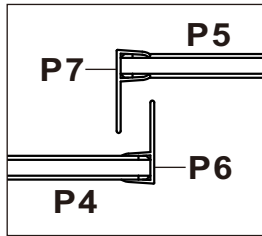
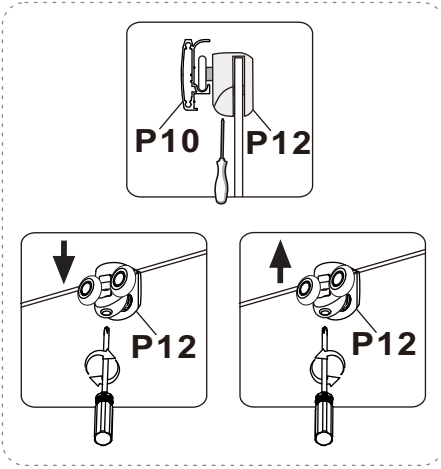


PH2

9

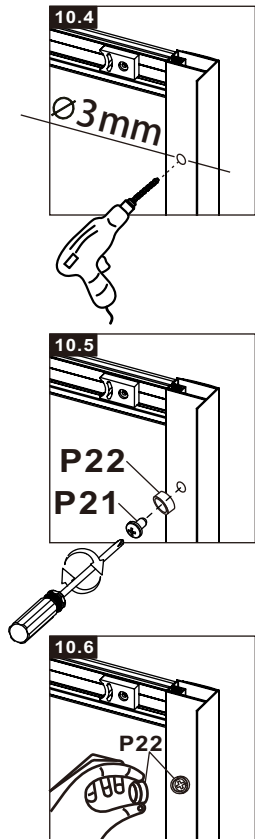
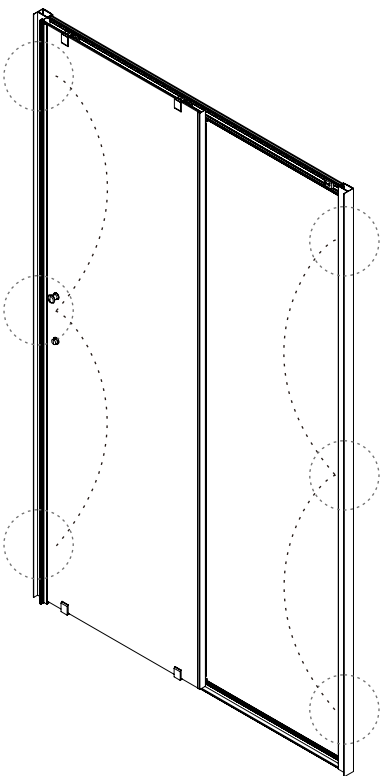
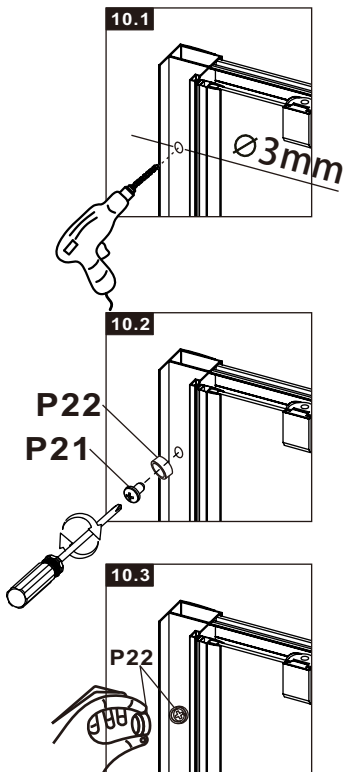


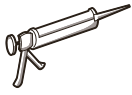
The sliding door can be adjusted by adjusting P12 and P10. After adjustment, install the handle.



Use self-tapping screws P22(gasket)+P21+P22(cap) to fix the frame, and do not drill into the glass !

10



**11**

Apply waterproof silicone caulk sealant and keep it still for 24 hours before use.

