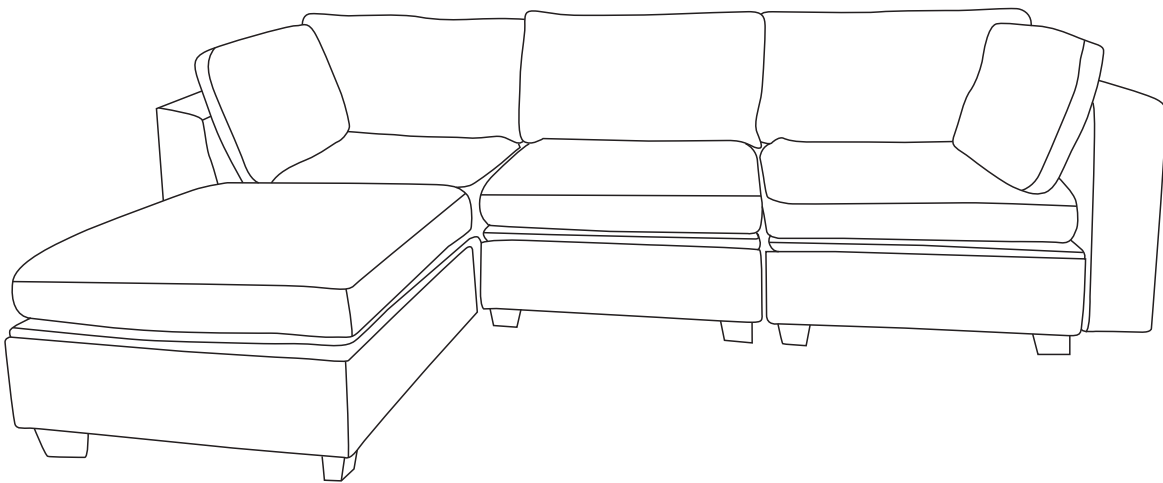


Assembly Manual

SOFA

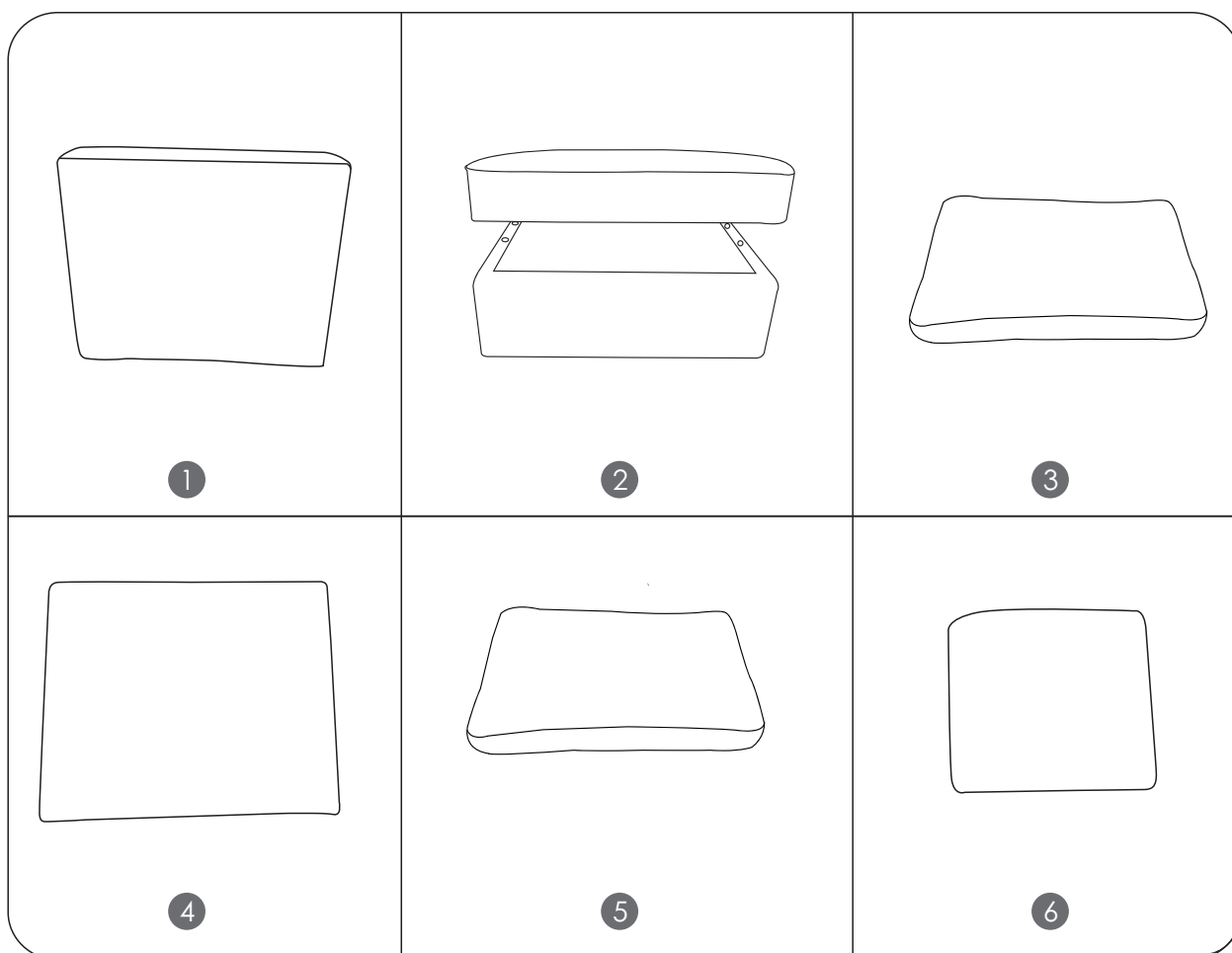
SF054



Please read this manual carefully before any operation and keep it properly for future use.

Customer Service: service@sunoft.com

Components List

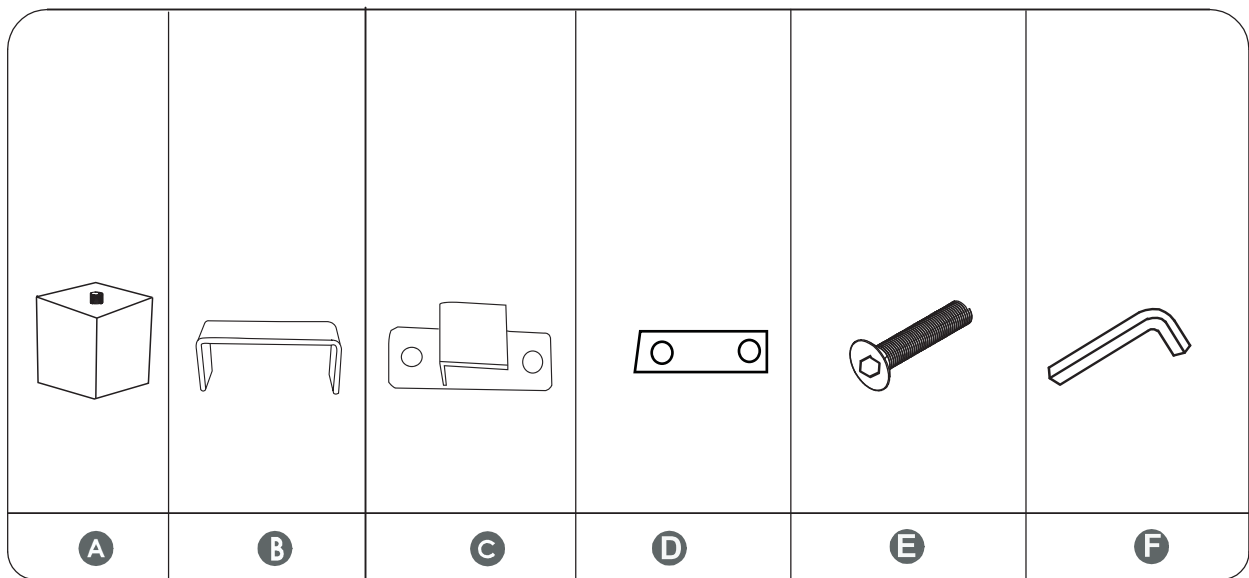


No.	Components List	PCS
1	Armrest (L&R)	2
2	Seat frame	4
3	Back pillow	3
4	Backrest	3
5	Armrest bag	2
6	Seat cushion	4

Attention:

Back pillows and seat cushion are in one carton, armrests are in another carton.

Components List



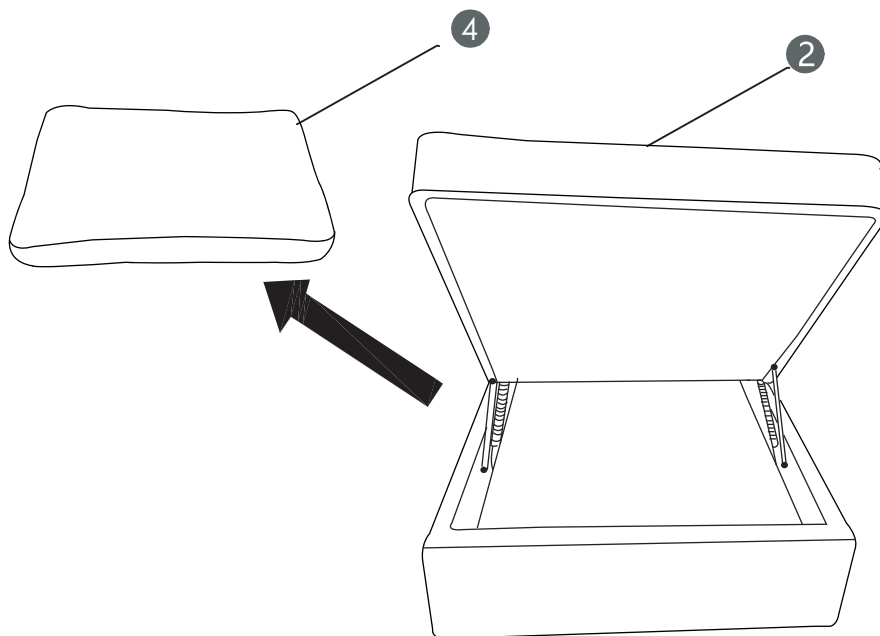
No.	Components List	PCS
A	Plastic foot	21
B	Connector	4+1
C	Connector	10+1
D	Connector	10+2
E	Bolt	40+2
F	Allen key	1

Note: The number after "+" sign indicates the extra piece(s).

Assembly Instruction

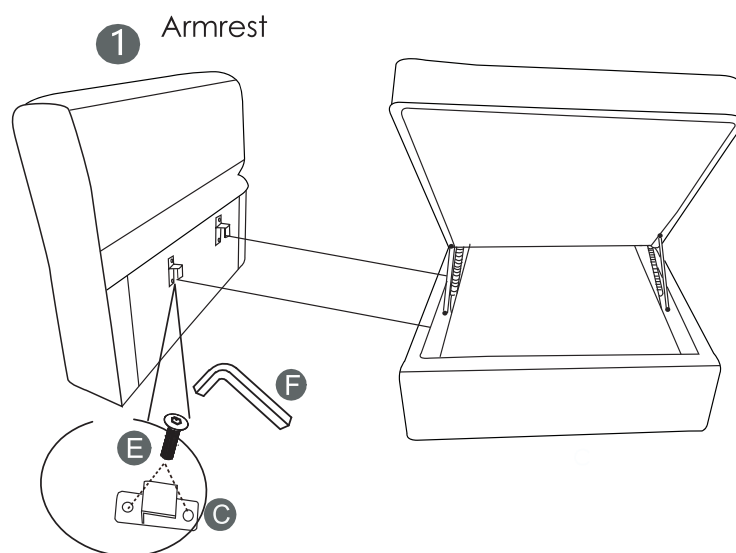
1

Take the back pillow(4) out of seat frame(2)



2

Attach the connectors(C) to the armrest(1) using bolts(E) and Allen key(F)

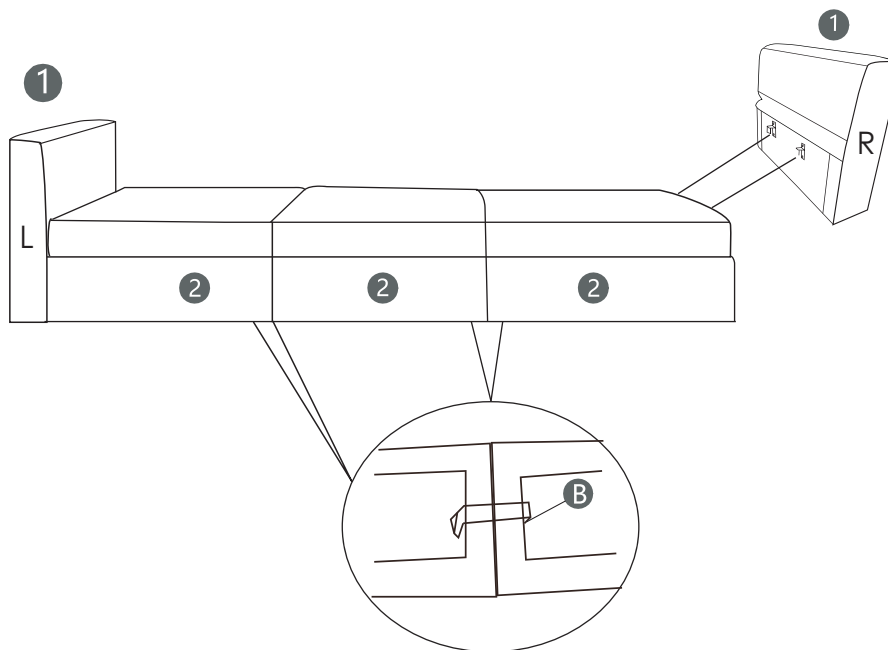


3

Assembly Instruction

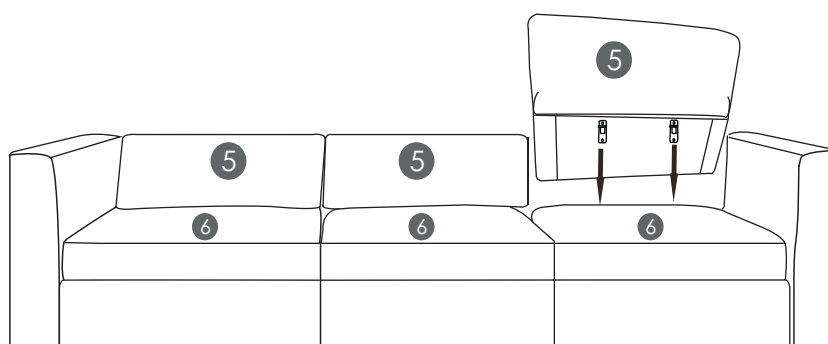
3

Connect seat frames(2) with each other using connectors(B) and insert the armrests(1) into the seat frames. Press hard to make sure it in the lowest position.



4

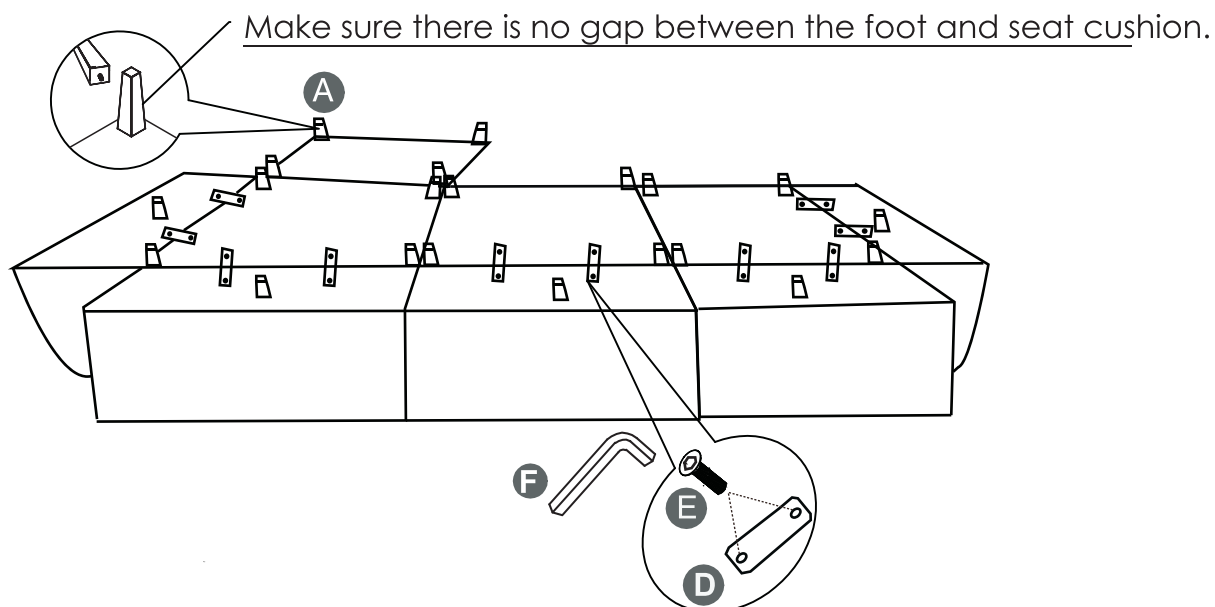
Insert the middle and side back frames(5) into the seat cushion frame from left to right.



Assembly Instruction

5

Fix the armrests, backrests and seat cushions closely with connectors(E), bolts(D) and Allen key(F). Attach the wood feet to the backside of sofa, and make sure there is no gap between the foot and seat cushion.

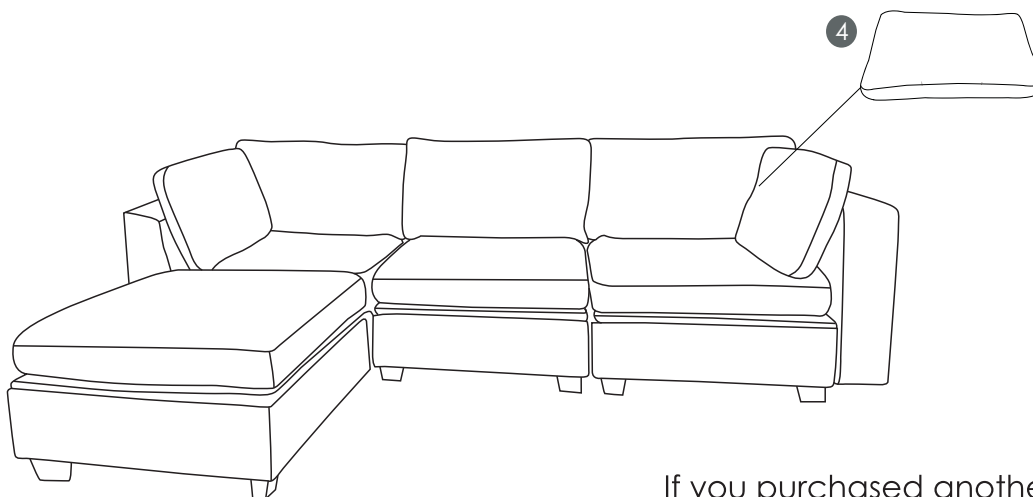


As you can see from the above picture, all the plates with two holes are connectors(E), others (without holes) are feet(A).

Assembly Instruction

6

place the back pillows(4) on the seat cushions.Assembly is done.



If you purchased another ottoman, you can put it here.