

Summary Q&A

Q1: How can I enjoy rain shower and hand shower at same time?

A1: There is a black plastic knob on bracket, you can switch this knob from rain shower - rain and hand shower - hand shower.

Q2: Why my shower head cannot be adjust to ideal position?

A2: There are metal 360° rotatable metal balls of bracket and rain shower head, you can adjust them with two hands. (Note: It will be hard to adjust at first time, you can switch hardly without worry.)

Q3: Why hand shower fall off from bracket?

A3: There are magnetic structure and buckle structure of dock, you can press hand shower head gently to make sure it is attached to dock tightly.

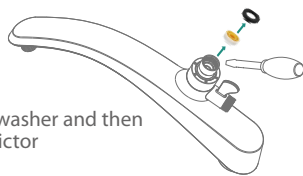
Q4: Why my shower head leaking after installation?

- A4: 1. If the leaking is at connection of shower hose, shower head or bracket, please check whether there is washer.
2. If the leaking is shower head panel, please check weather there is any break of shower head, contact seller for replacing.
3. If there are leaking on shower panel without shower panel damage, it should be residual shower water, you can wait around 10s to check leaking disappear or not.

Flow Restrictor

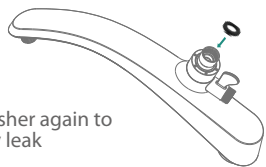
Our shower heads follow California's Appliance Efficiency Regulations, if you live in California, please do not remove flow restrictor.

1



Take out washer and then flow restrictor

2

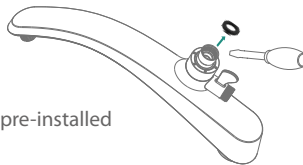


Put in washer again to avoid any leak

If you choosed 1.8gpm shower head and want to improve water pressure, please follow those steps to remove water flow restrictor.

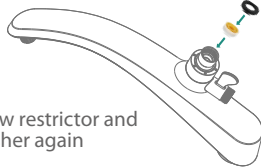
(Only for customers who lives in other cities beside California).

1



Take out pre-installed washer

2



Put in flow restrictor and then washer again

If you choosed 2.5gpm shower head and want to save water, please follow those steps to insert water restrictor.

Customer Support (24/7)

✉ bozybo2022@gmail.com

30 30 Days free return & replacement

2 2 Years product warranty

f @bozybo



www.bozybo.com

BOZYBO

User Manual

Rain Shower Head Combo with Magnetic Dock

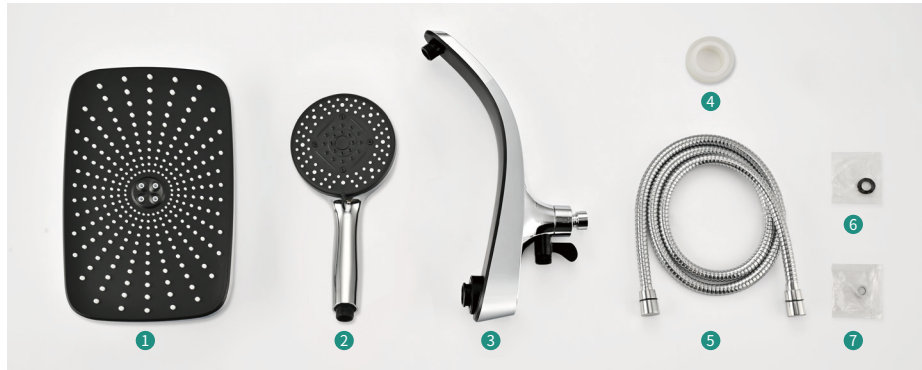


Please contact us for installation help, missing or replace parts.

Email: bozybo2022@gmail.com

Official Web: www.bozybo.com

What will you get?



- ① 12 inch rain shower head
- ② Handheld shower head
- ③ Exclusive shower bracket
- ④ Teflon tape
- ⑤ 59" Stainless steel shower hose
- ⑥ Spare washer
- ⑦ Water flow restrictor

How to install your rain shower system?



Step 1: Tape the threads of shower arm

Unscrew old shower head, clean the shower arm with toothbrush, then wrap the pipe threads with two or three turns of teflon tape

(Note: Sharp shower arm edge will split the washer and result in a leaking, to avoid any leak, you can reserve more tape and wrap the edge)



Step 2: Screw on exclusive shower bracket

Screw on exclusive shower bracket to shower arm at clockwise, tight it with wrench as tight as possible.

Warm tips:

If you did not place the bracket at right direction, follow below instructions to correct it

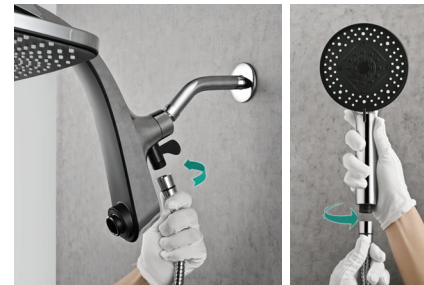
1. Hold the shower bracket with two hands and rotate it, there is a 360° rotating ball, so you can adjust angle no worry.
2. Keep the shower bracket is parallel to wall



Step 3: Connect rain shower head to shower bracket

Screw rain shower head to bracket at clockwise as tight as possible, you can use wrench to tight it also.

(Note: Adjust angle of rain shower head avoid any hit to bracket, adjust with two hands after connecting to make sure it is parallel to floor)



Step 4: Connect hand shower head and shower hose to bracket

Check two sides of shower hose whether there are pre-placed washers, connect shower hose to bracket and hand shower head then.

(Note: The package come with extra washer also, make sure there are washer at two sides of shower hose to avoid leaking)



Step 5: Place the hand shower head to magnetic dock

Adjust the shower bracket and rain shower head with hands to correct position, then place hand shower head to magnetic dock. After finishing installation, turn on water supply to check if there are any leakage.

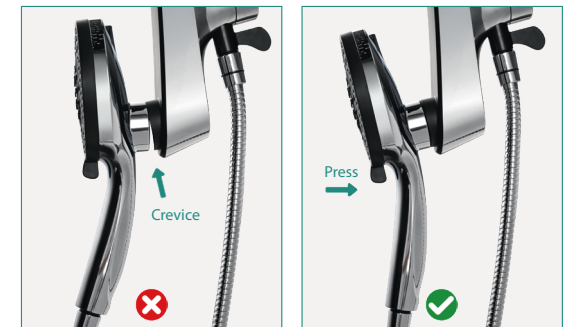
(Note: if any leaking, please contact seller support or check above step 1-4 and make sure all steps followed instruction)

Warm tips:

Check your hand shower head to avoid it fall off

Press the hand shower head gently if there is a small gap between shower head and dock, make sure they are completely attached.

Beside magnetic structure of hand shower head and bracket, we add buckle structure also, it is tighter than most magnetic shower head.



Correct and safe position they look like