

10 : 00

estimated
assembly time



2 or more

people required

Ok, let's
get started!



- Put on mood music!
- To prevent damage to product, use the clean side of package carton or rug as working surface.
- In the event of missing or damaged parts, delivery problems etc., please reach out to our team.
We will be happy to fix the problem!

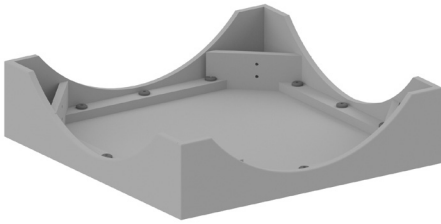
care guide

- Clean regularly with a soft and dry cloth.
- To protect finish, avoid use of abrasive cleaners.
- Wipe up spills immediately. Please!

ⓘ While assembling the product, tighten the bolts up to 50%. Once all parts are in place, only then fully tighten the bolts.



product parts



(A)
Tabletop
x1



(B)
Legs
x4

what's included



(C)-Bolt (30 x 6)
x8



(D)- Lock Washer (12x6)
x8



(E)-Washer (16x6)
x8



(F)- Allen Key
x1

- | | |
|-----------|----------------|
| WS | White Sticker |
| YS | Yellow Sticker |
| GS | Green Sticker |
| OS | Orange Sticker |

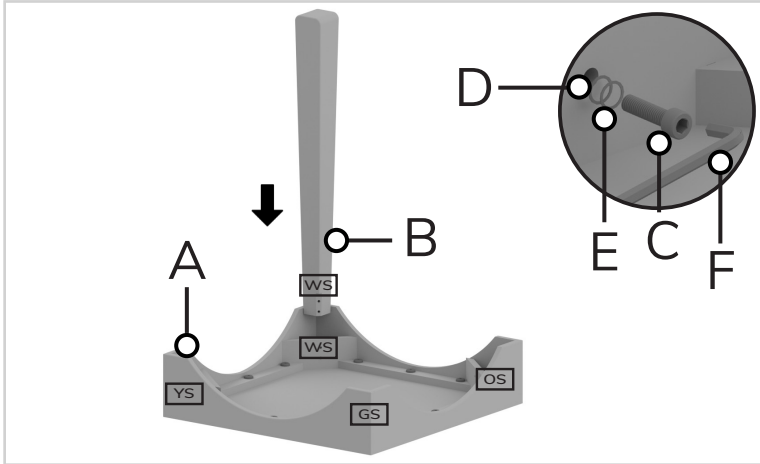
assembly instructions

Friendly Tip: Take a deep breath going in. This may be a tricky part, but nothing too overwhelming. Just follow these steps to the T and the outcome will be worth it!



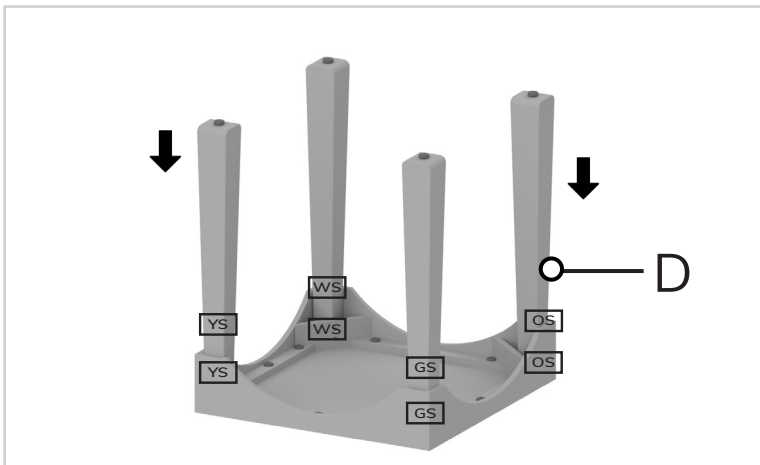
step 1:

Turn the table top (A) upside down on a flat surface. Align one of the legs (B) in the given slots on (A). Use the image below as a reference. Fix it in place by inserting washer (E), lock washer (D), and bolts (C) in the given slots. Tighten all the bolts up to 50% using allen key (F). Ensure the stickers on (A) match the stickers on (B).



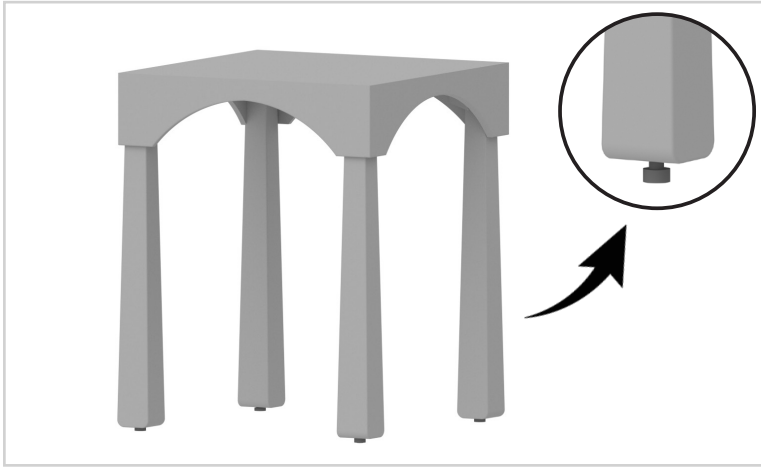
step 2:

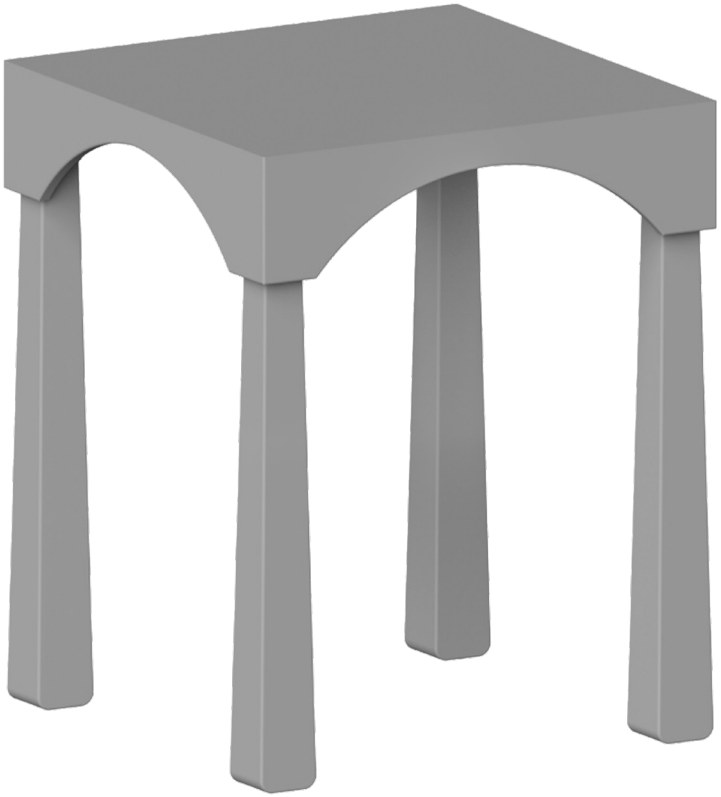
Repeat step 1 with the remaining legs (B). Now, tighten all the bolts fully using allen key (F).



step 3:

If required, adjust the leveller according to the floor as shown in the image below.





Voila! Your end table is now assembled and secure!

you've
got
a home
with us

