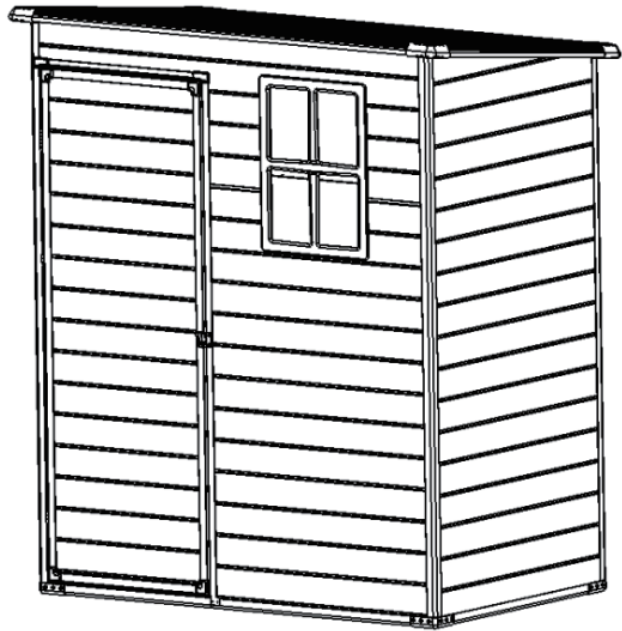


MANUAL INSTRUCTION

Resin Garden Shed

G37023



Requires three people and takes 3-4 hours
for Installation. Quick & Easy Assembly
Ridge Reinforced Walls
Available in Various Sizes

BEFORE YOU START

Owner's Manual

Prior to installation, it is important that you contact your local government authority to determine if building approval is required. Study and understand this owner's manual. Important information and helpful tips will make your construction easier and more enjoyable.

Assembly instructions

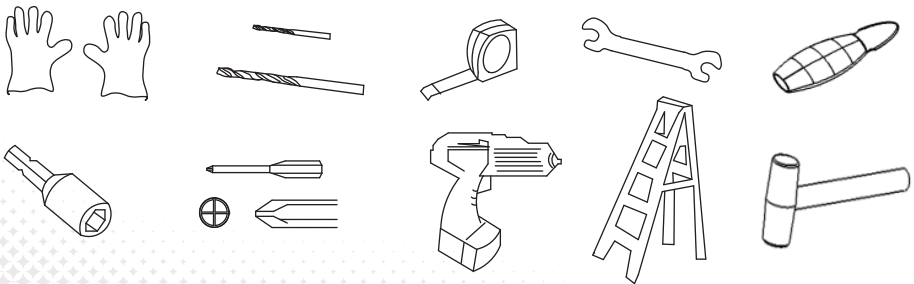
Instructions are supplied in this manual and contain all appropriate information for your building model. Review all instructions before you begin. During assembly, follow the step sequence carefully for correct results. Please be aware: this unit takes two people about one full day to complete.

Parts

Check to be sure that you have all the necessary parts for the building. Separate contents of the carton by the part number while reviewing parts list.

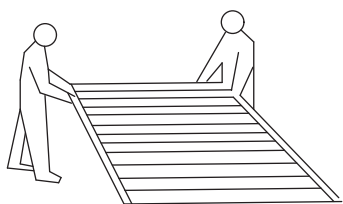
Familiarize yourself with the hardware and fasteners for easier use during construction. These are packaged within the carton. Note that extra fasteners have been supplied for your convenience.

TOOLS MAY REQUIRED



Use heavy duty gloves when handling steel sheets and flashing

PLAN AHEAD



It requires two people a full day to complete installation

Watch the weather:

Please be sure the day you select for installation is dry and calm.

DO NOT attempt to assemble your shed in windy weather because of risk of damage to panels, or personal injury. Be careful of wet or muddy ground.

Teamwork:

Whenever possible, two or more people should work together to assemble the building. One person can position parts or panels while the other is able to handle the fasteners and the tools.

PLAN AHEAD

Site Selection

- Avoid overhanging trees as much as possible as leaves will make regular cleaning necessary and broken branches are a potential hazard.
- Small trees, bushes or fences nearby can be helpful, acting as a wind break

Site Preparation

The site must be prepared so that the base of the shed is level all round and checking with a spirit level is required.

The base can be constructed by treated timber or concrete, in order to stop the moisture getting into the shed. The shed is not designed to be built onto lawn directly. Also the ground will get muddy during rainy days.

If a concrete pad is made, it is important that this slopes towards the edges to prevent water ingress.

Time must be allowed for any concrete or cement to dry before building the shed on top

Bases can also be constructed from bricks, blocks, or mounted on a concrete pad. The bricks or blocks should be cemented onto firm and level concrete footings and the greenhouse frame drilled and screwed to the base.

IMPORTANT NOTES

- Find someone to help you: it is much easier with someone to hold parts, pass tools etc. Also some steps require two people to lift structures together. This is not very heavy work so would suit most able-bodied people.
- Allow plenty of time: rushing often causes errors and the re-doing of incorrect assemblies. If you have never built a shed before, it can take most of a day to carefully complete the construction.
- Have the right tools to hand.

- Safety clothing as recommended in the 'Tools' section.
- Ideally lay out the parts and check that all are present before commencing construction. Lay on cloths or plastic sheets if there is any risk of scratching the parts.
- Tighten all nuts carefully, being sure not to miss any. Check the frame is square and using a spirit level to check that it is upright.

BASEMENT COMPONENTS

F35-C01 310x1495x14mm



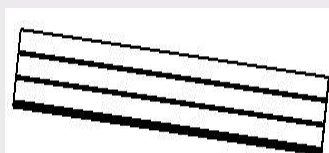
1 PC

F35-C02 280x1495x14mm



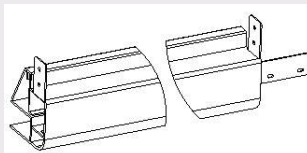
1 PC

F35-C03 310x1495x14mm



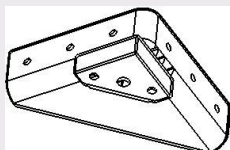
1 PC

F35-C24-1 43x45x629mm



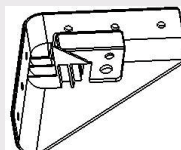
1 PC

F35-C27 101x101x36mm



3 PCS

F35-C28 101x101x36mm



1 PC

F35-C19 43x43x835mm



1 PC

F35-C20 43x43x860mm



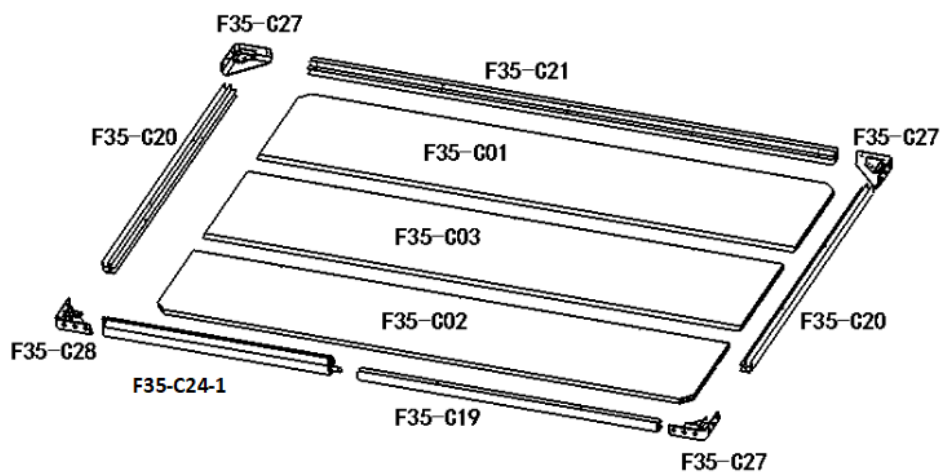
2 PCS

F35-C21

43x43x1465mm

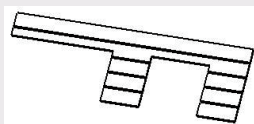


1 PC



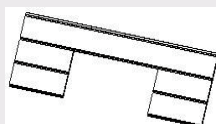
WALL COMPONENTS

F35-C08 492x1495x14mm



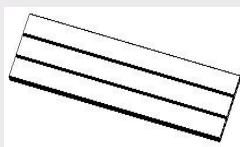
1 PC

F35-C09 310x850x14mm



1 PC

F35-C10 310x850x14mm



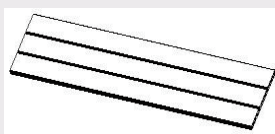
3 PCS

F35-C11 122x850x14mm



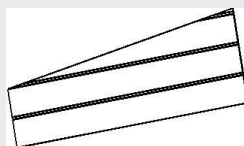
1 PC

F35-C12 310x890x14mm



10 PCS

F35-C13 310x890x14mm



1 PC

F35-C14 310x890x14mm



1 PC

F35-C15 492x1495x14mm



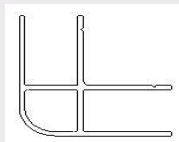
1 PC

F35-C16 310x1495x14mm



4 PCS

F35-C22 33x33x1825mm

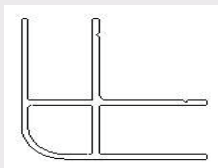


2 PCS

WALL COMPONENTS

F35-C23

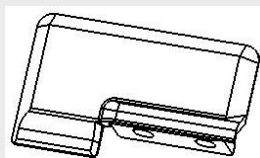
33x33x1710mm



2 PCS

F35-C25

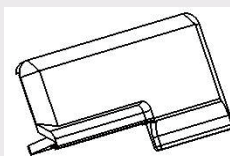
57x34x22mm



1 PC

F35-C26

62x34x22mm



1 PC

F35-C31

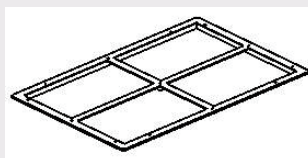
412x560x18mm



1 PC

F35-C32

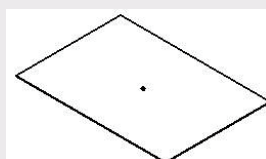
540x390x13mm



1 PC

F35-C33

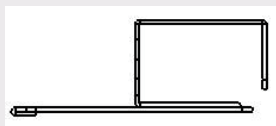
348x498x2.0mm



1 PC

F35-A01

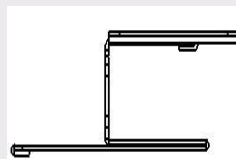
41x18.5x1700mm



1 PC

F35-A02

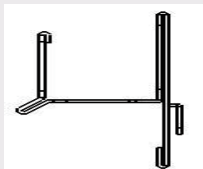
61x2.05x1698mm



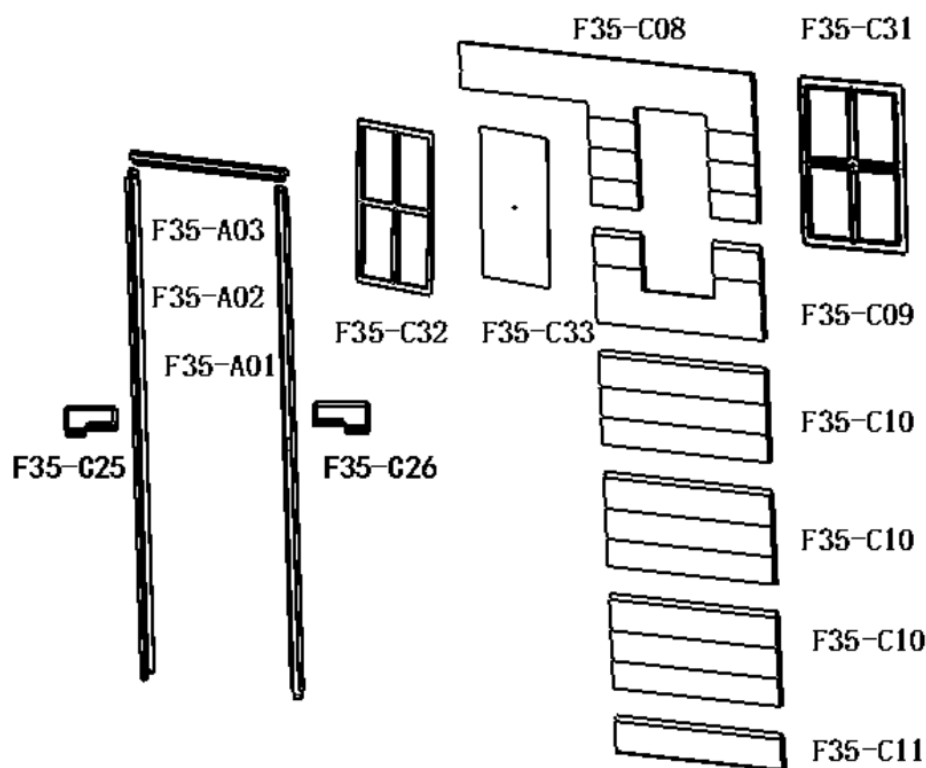
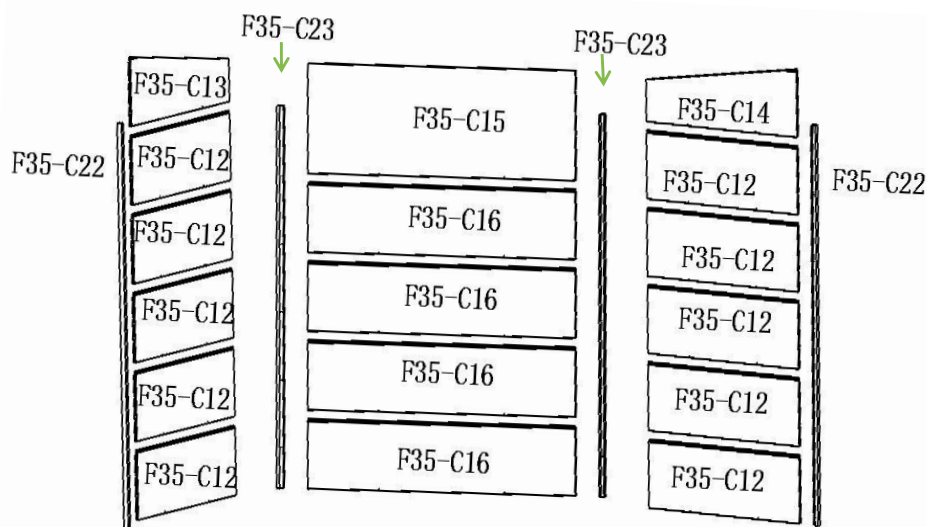
1 PC

F35-A03

25x44x664mm

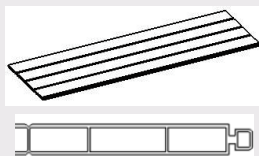


1 PC



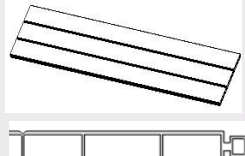
ROOF COMPONENTS

F35-C06 380x1580x14mm



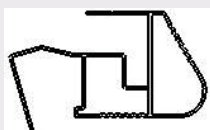
1 PC

F35-C07 310x1580x14mm



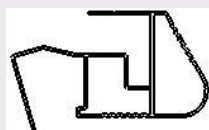
2 PCS

F35-C17 75x45x1480mm



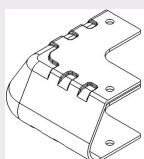
2 PCS

F35-C18 75x45x890mm



2 PCS

F35-C30 90x90x45mm

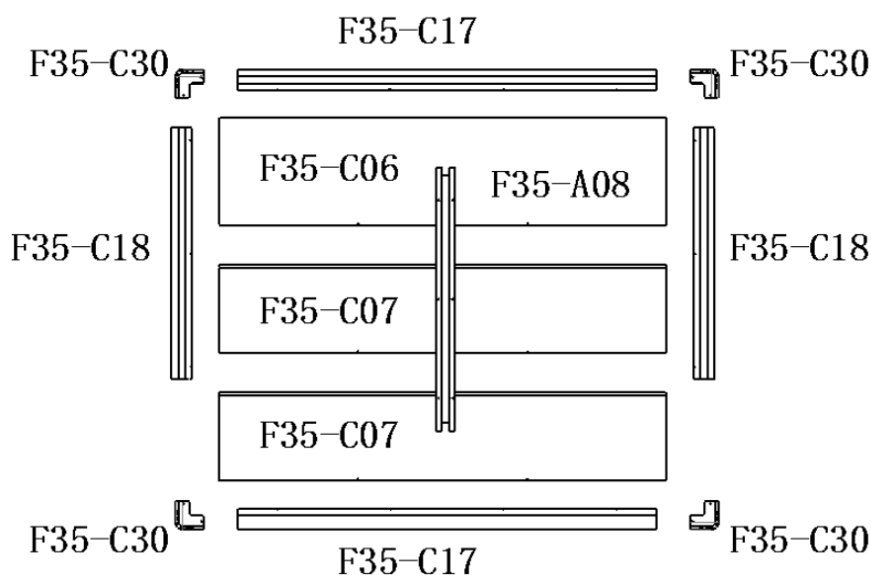


4 PCS

F35-A08 935x130.5x0.6mm



1 PC



DOOR COMPONENTS

F35-C04

415x606x14mm



1 PC

F35-C05

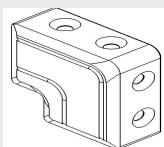
310x606x14mm



4 PCS

F35-C29

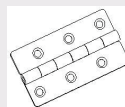
47x47x21mm



4 PCS

F35-D01

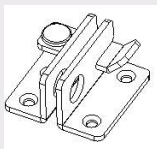
70x40mm



3 PCS

F35-D02

62x30mm



1 PC

F35-A04

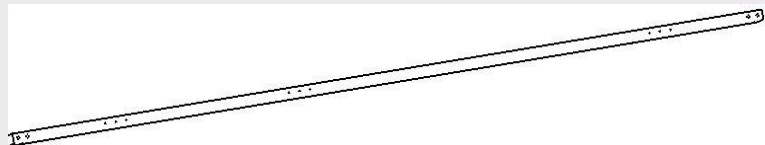
36x17x609mm



2 PCS

F35-A05

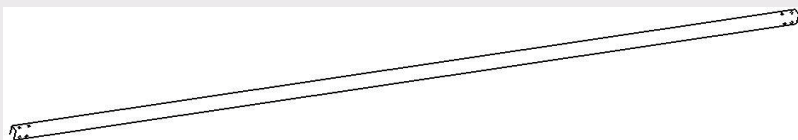
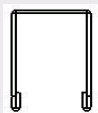
18x27x1630mm



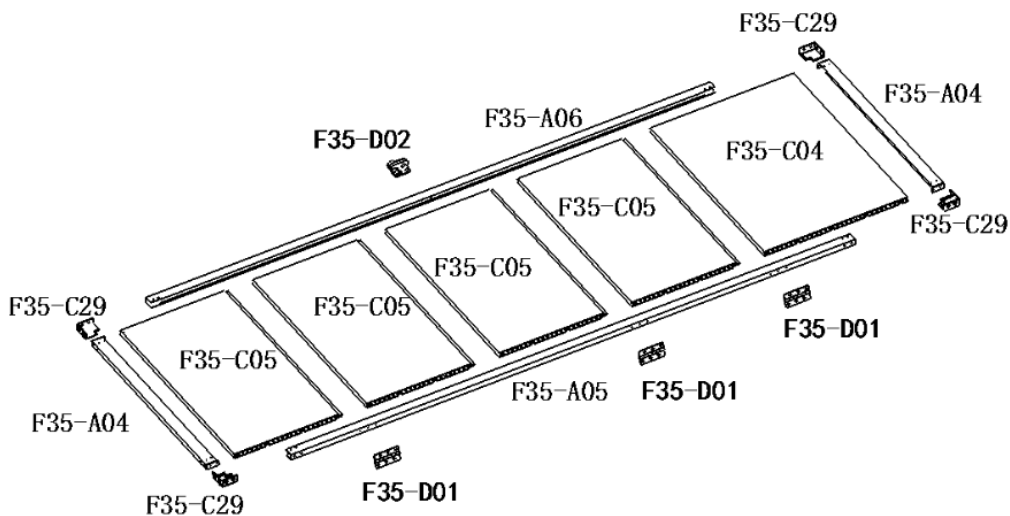
1 PC

F35-A06

18x27x1630mm



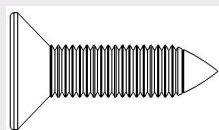
1 PC



SCREWS

E01

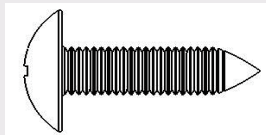
4.2x12mm



46 PCS

E02

4.2x12mm



202 PCS

E03

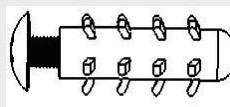
4.8 x19mm



24 PCS

E04




5.5x50mm

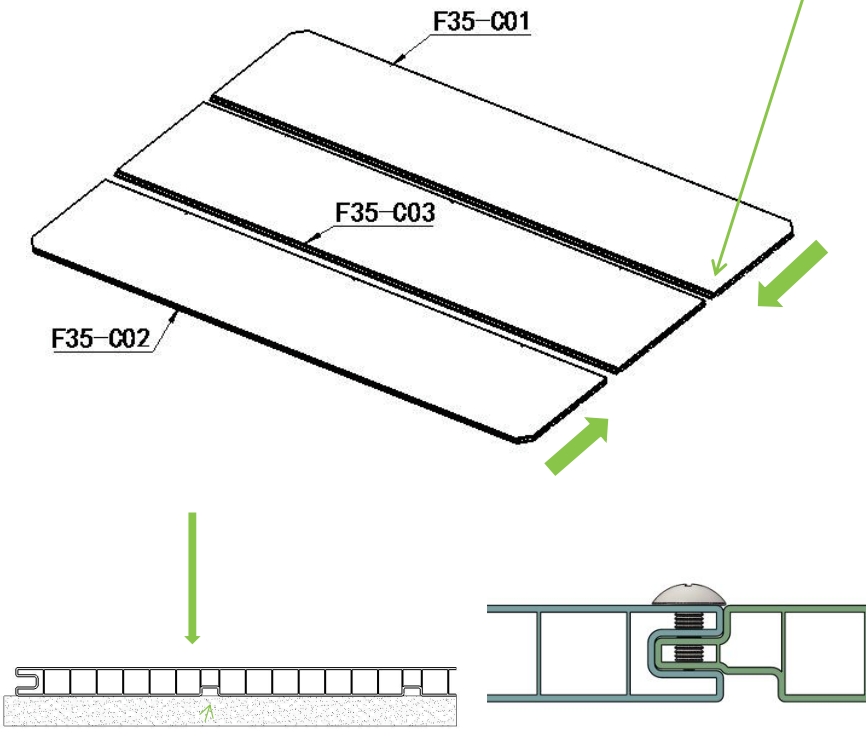


4 PCS

PRODUCT ASSEMBLY


1

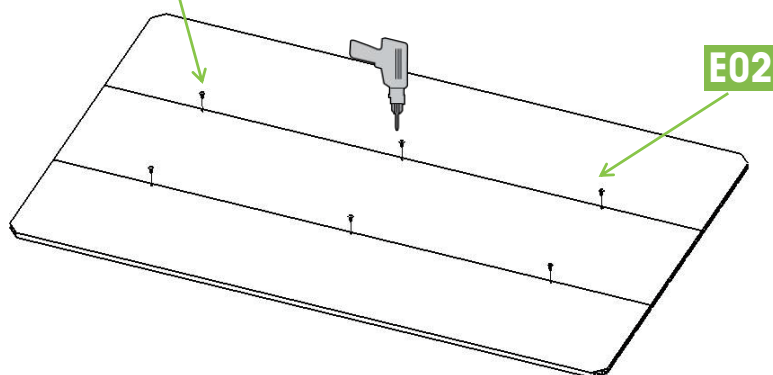
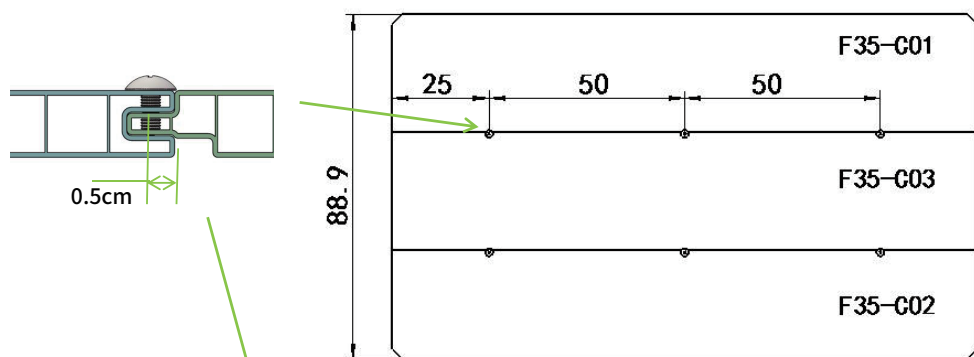
PART	NO.	QTY.
	F35-C01	1
	F35-C02	1
	F35-C03	1



PRODUCT ASSEMBLY

2

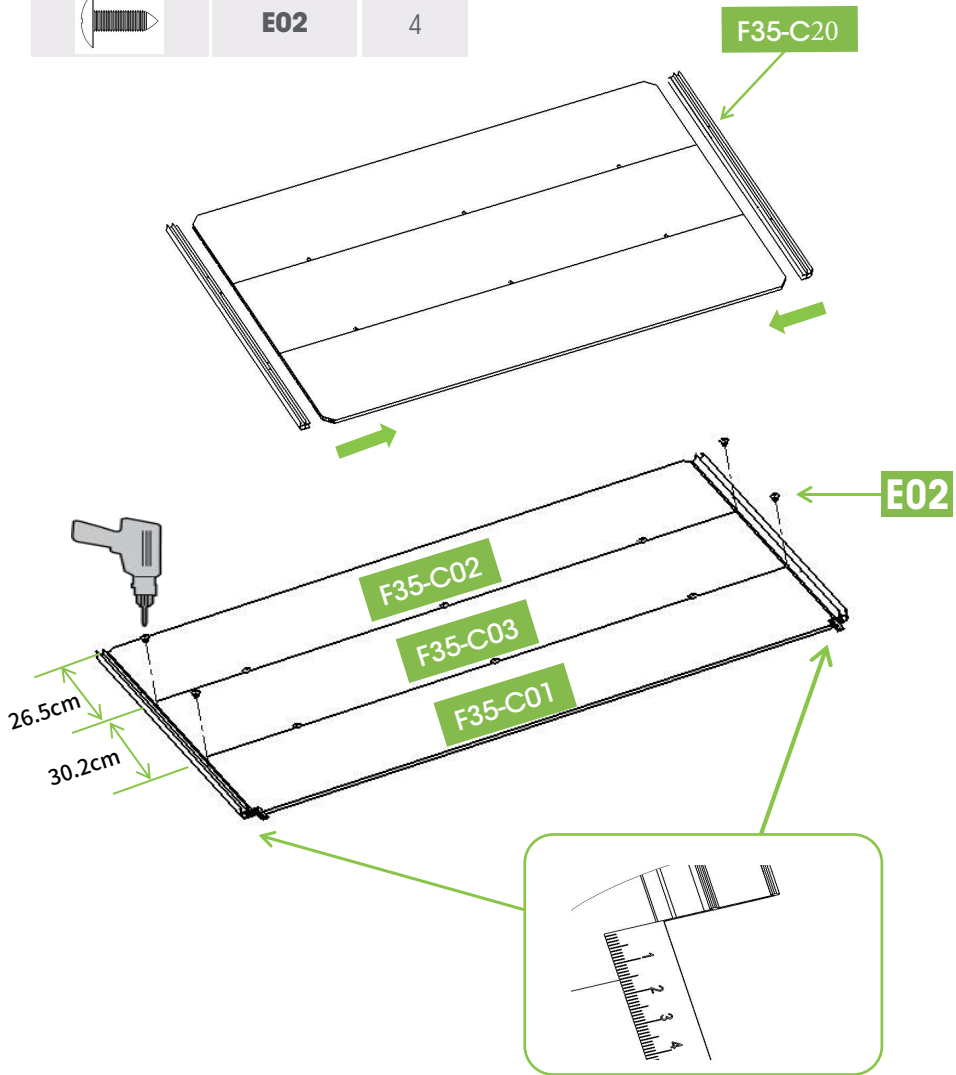
PART	NO.	QTY.
	E02	6



PRODUCT ASSEMBLY



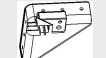



3

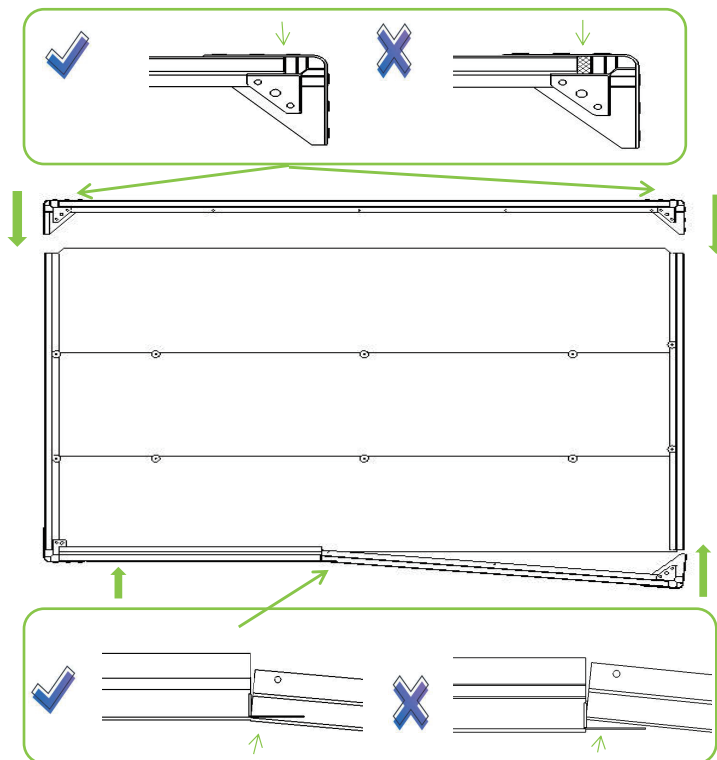
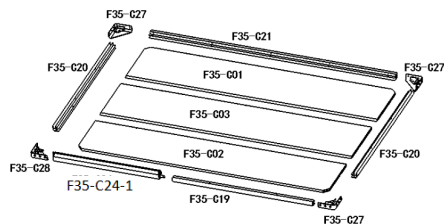
PART	NO.	QTY.
	F35-C20	2
	E02	4

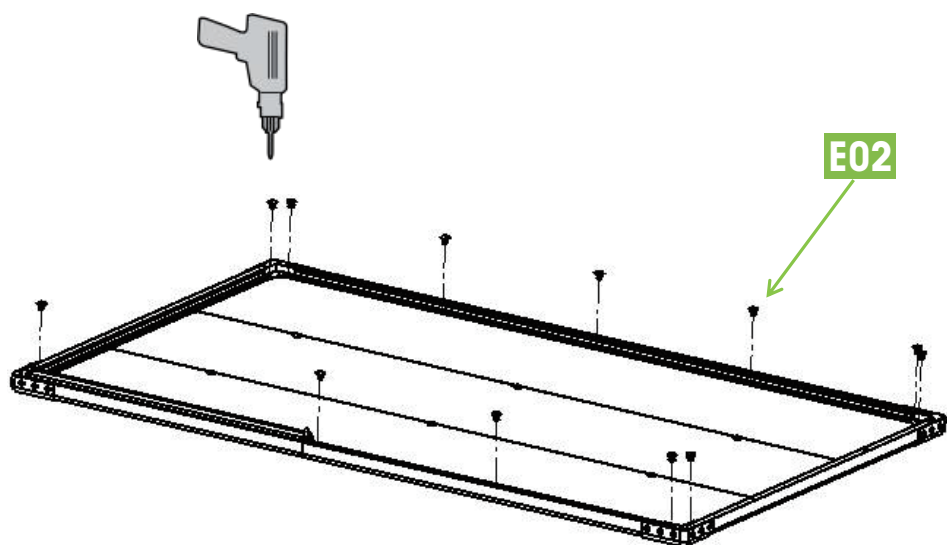


PRODUCT ASSEMBLY

4

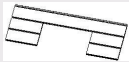



PART	NO.	QTY.
	F35-C24-1	1
	F35-C27	3
	F35-C28	1
	F35-C19	1
	F35-C21	1
	E02	12

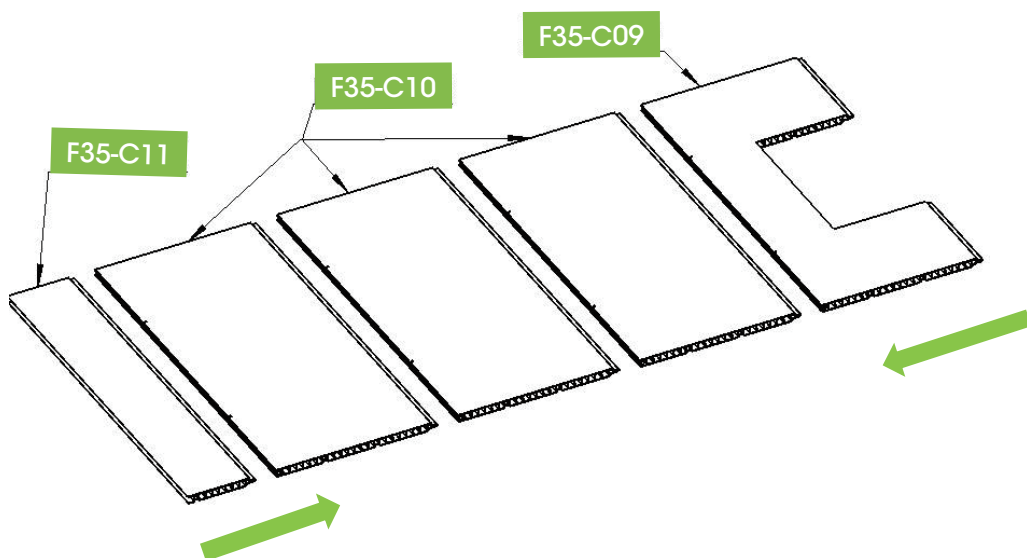


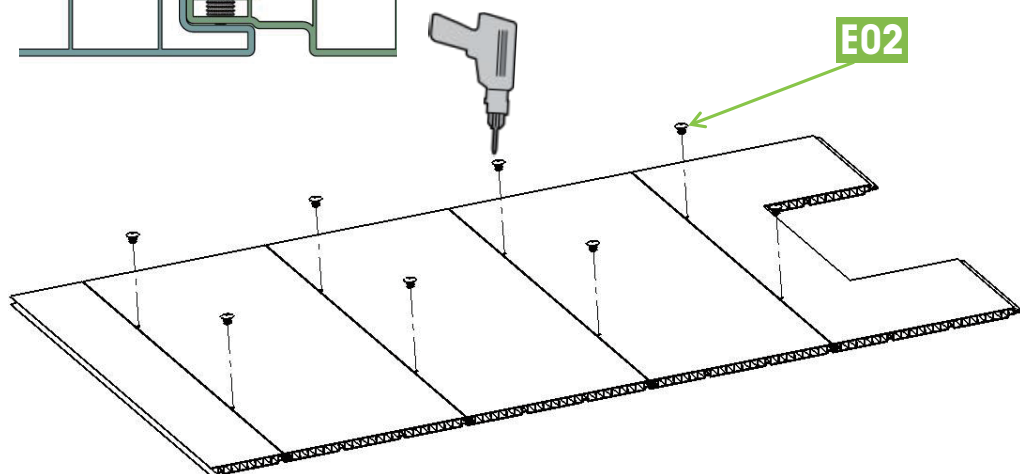
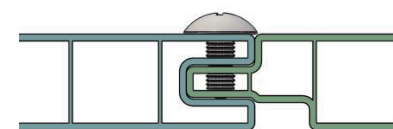
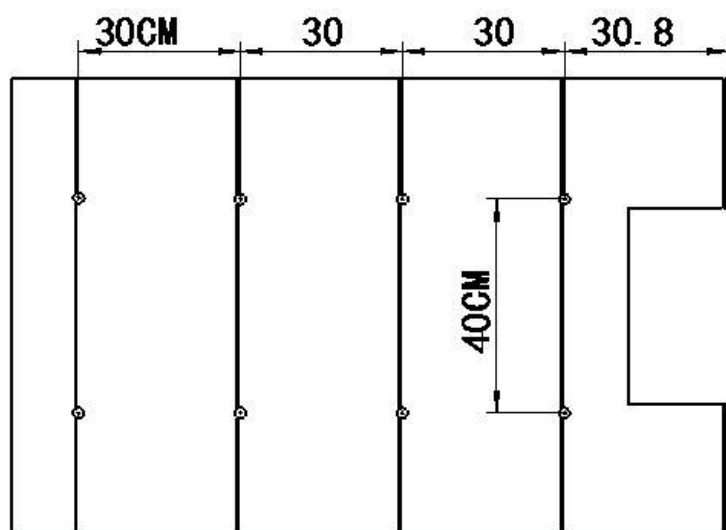
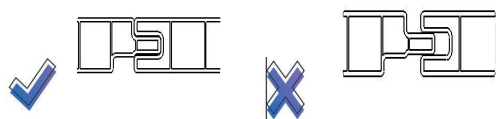


PRODUCT ASSEMBLY

5




PART	NO.	QTY.
	F35-C09	1
	F35-C10	3
	F35-C11	1
	E02	8

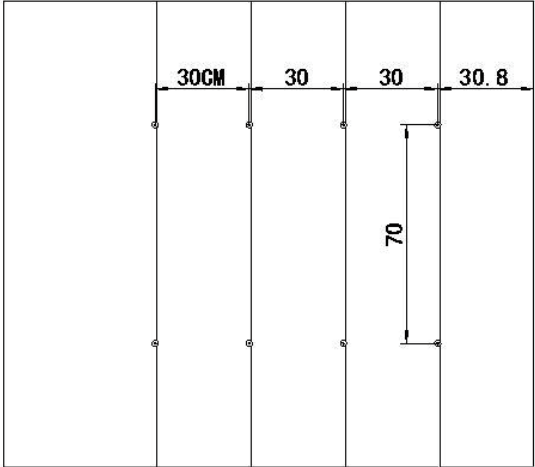
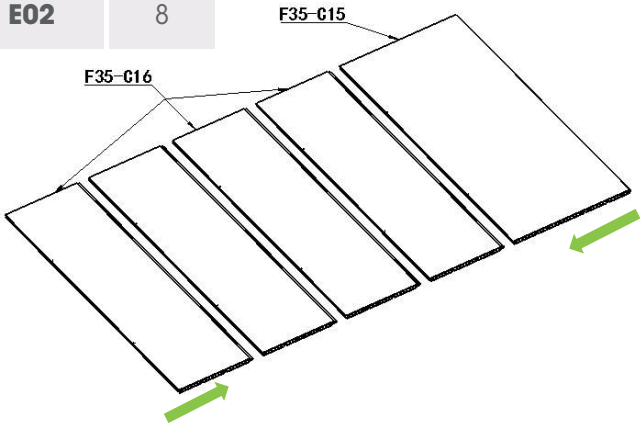


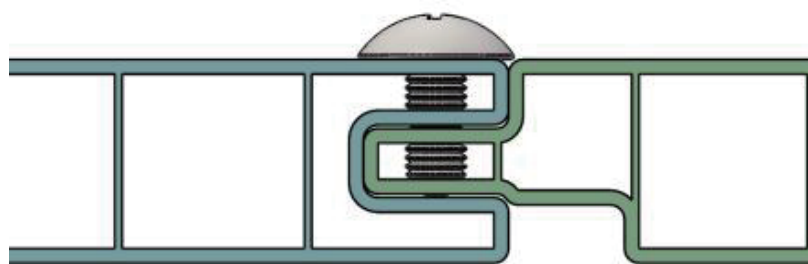
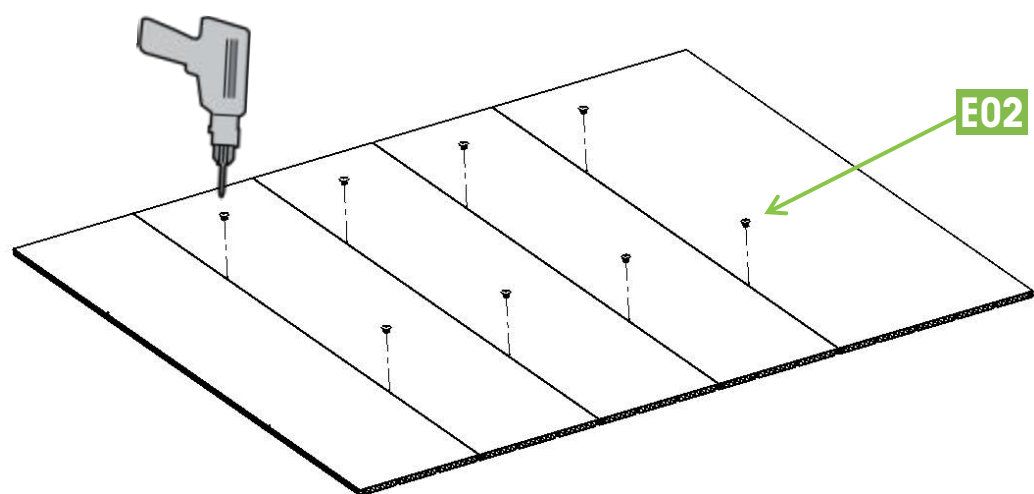


PRODUCT ASSEMBLY

6




PART	NO.	QTY.
	F35-C16	4
	F35-C15	1
	E02	8

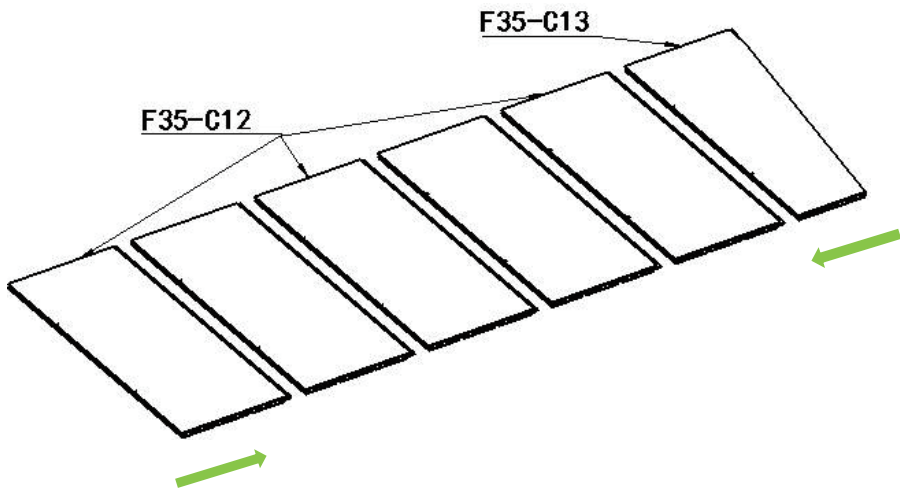


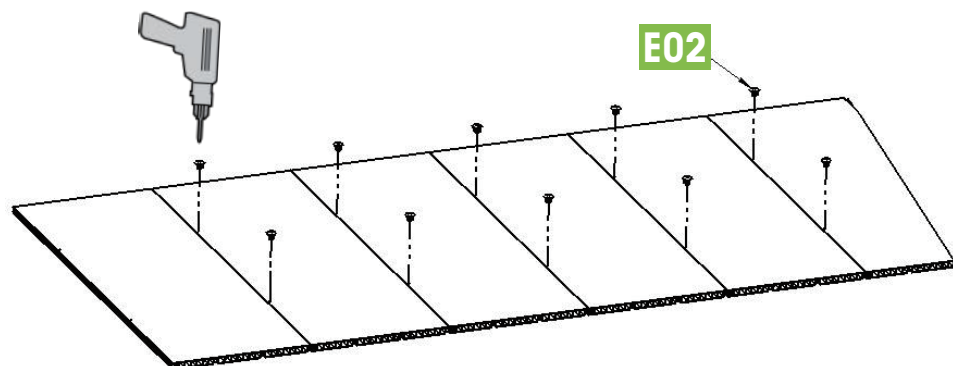
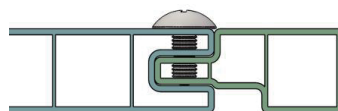
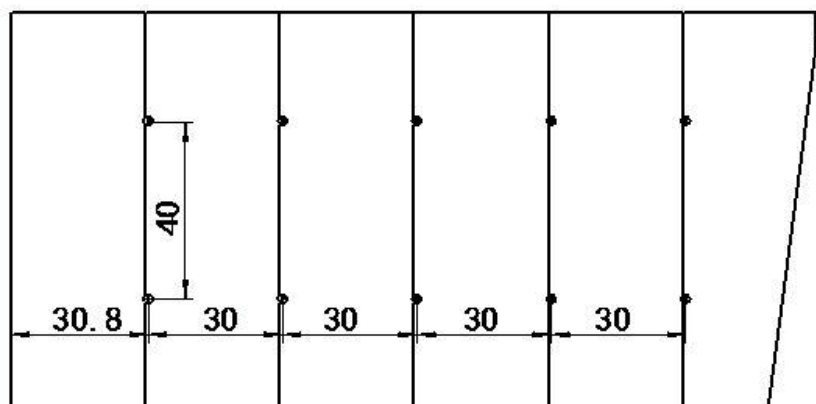
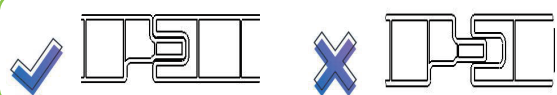


PRODUCT ASSEMBLY

7




PART	NO.	QTY.
	F35-C12	5
	F35-C13	1
	E02	10

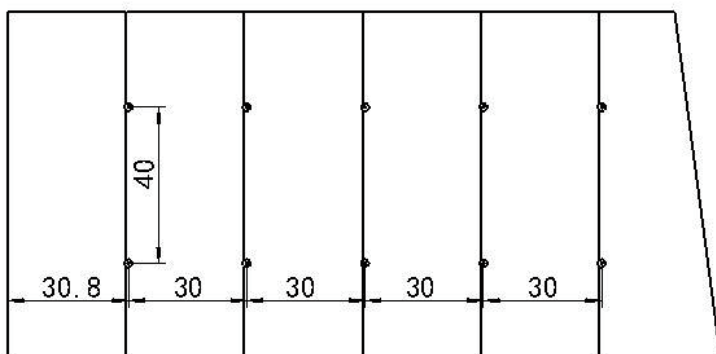
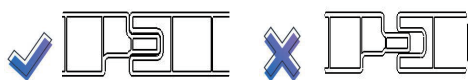
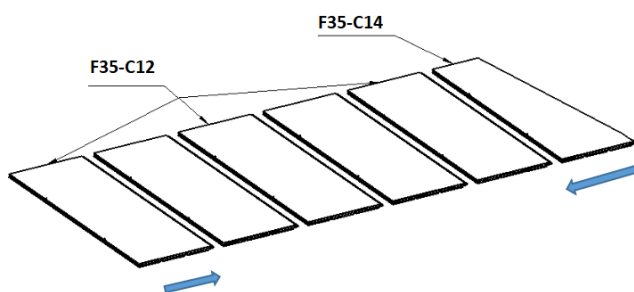


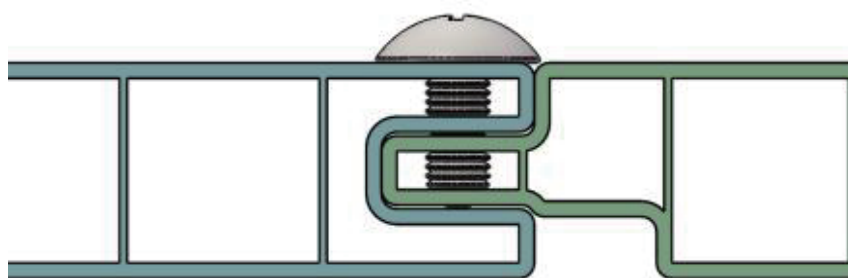
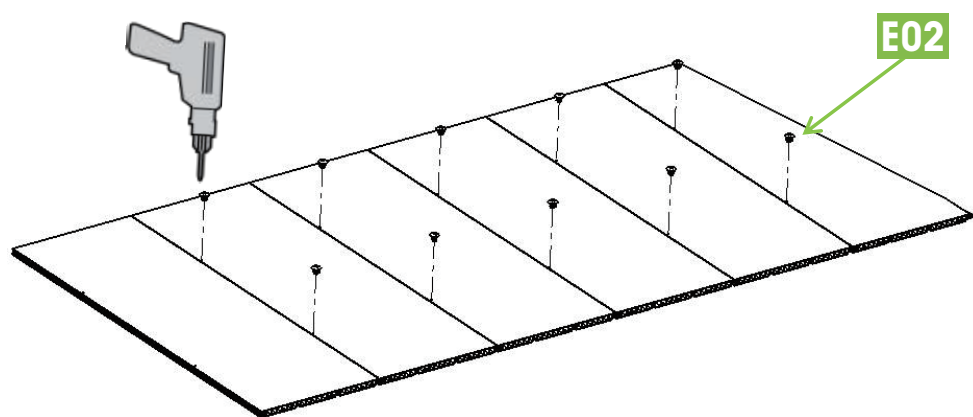


PRODUCT ASSEMBLY

8




PART	NO.	QTY.
	F35-C12	5
	F35-C14	1
	E02	10

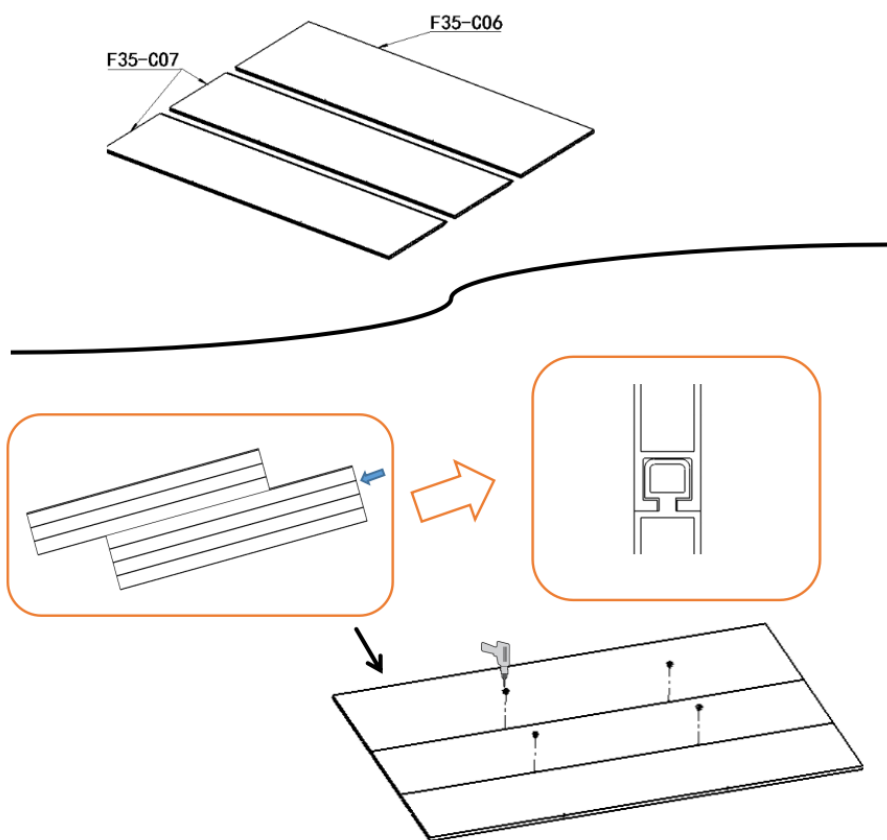




PRODUCT ASSEMBLY


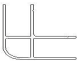
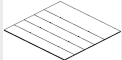

9

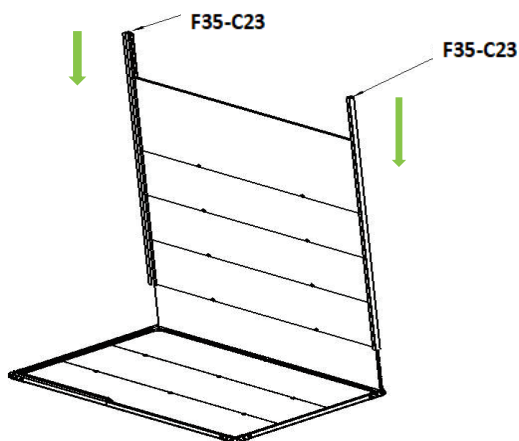
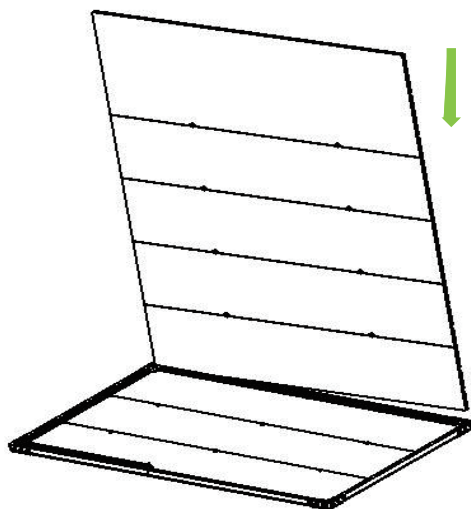
PART	NO.	QTY.
	F35-C06	1
	F35-C07	2
	E02	4

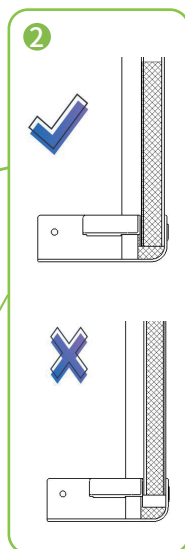
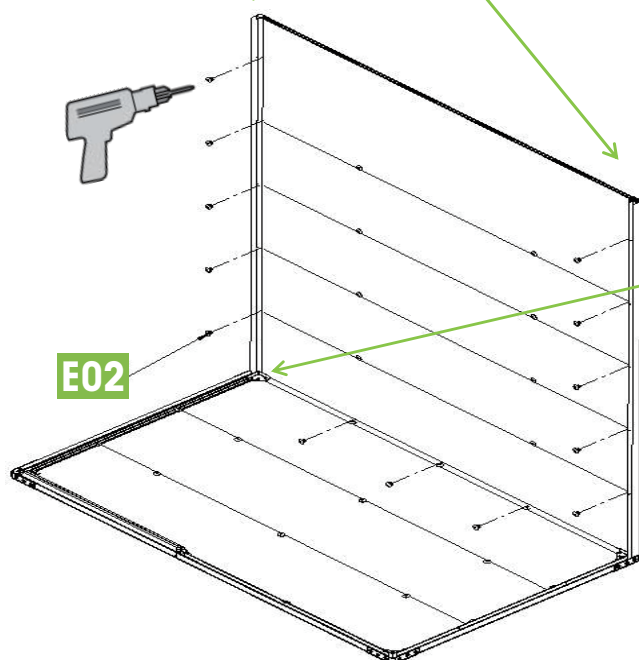
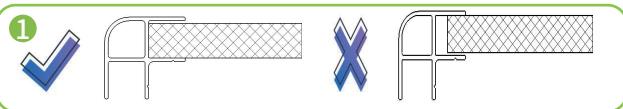


PRODUCT ASSEMBLY

10





PART	NO.	QTY.	PART	NO.	QTY.
		1		F35-C23	2
		1		E02	13

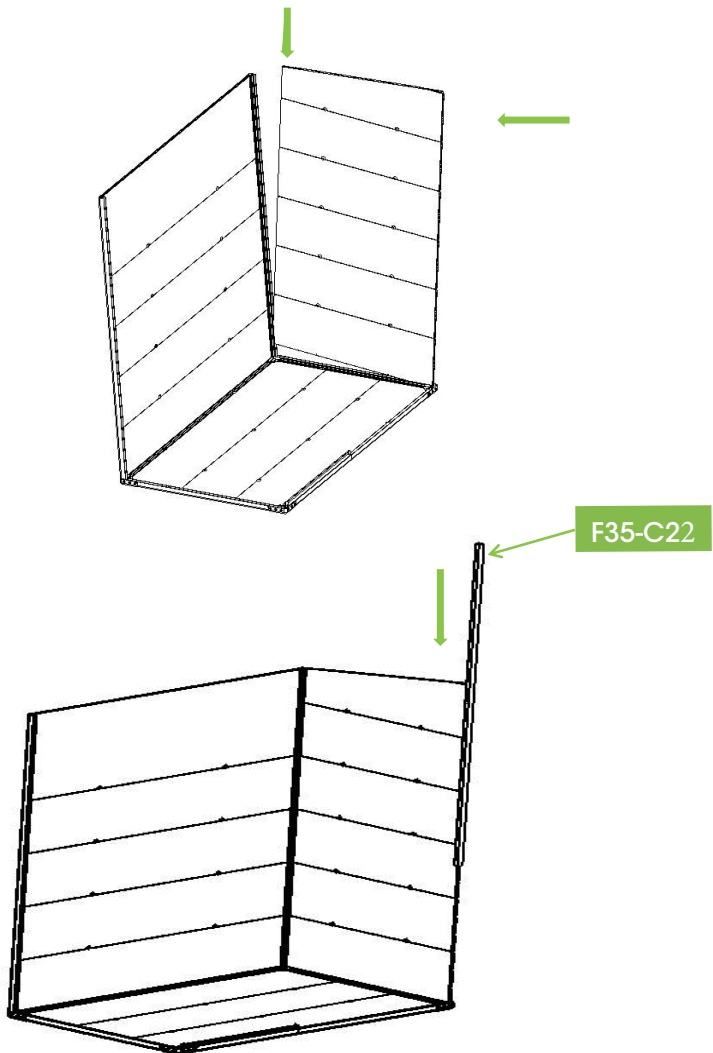


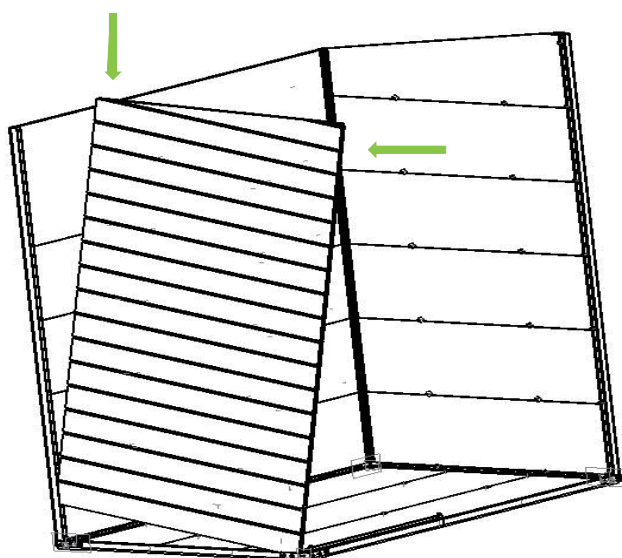
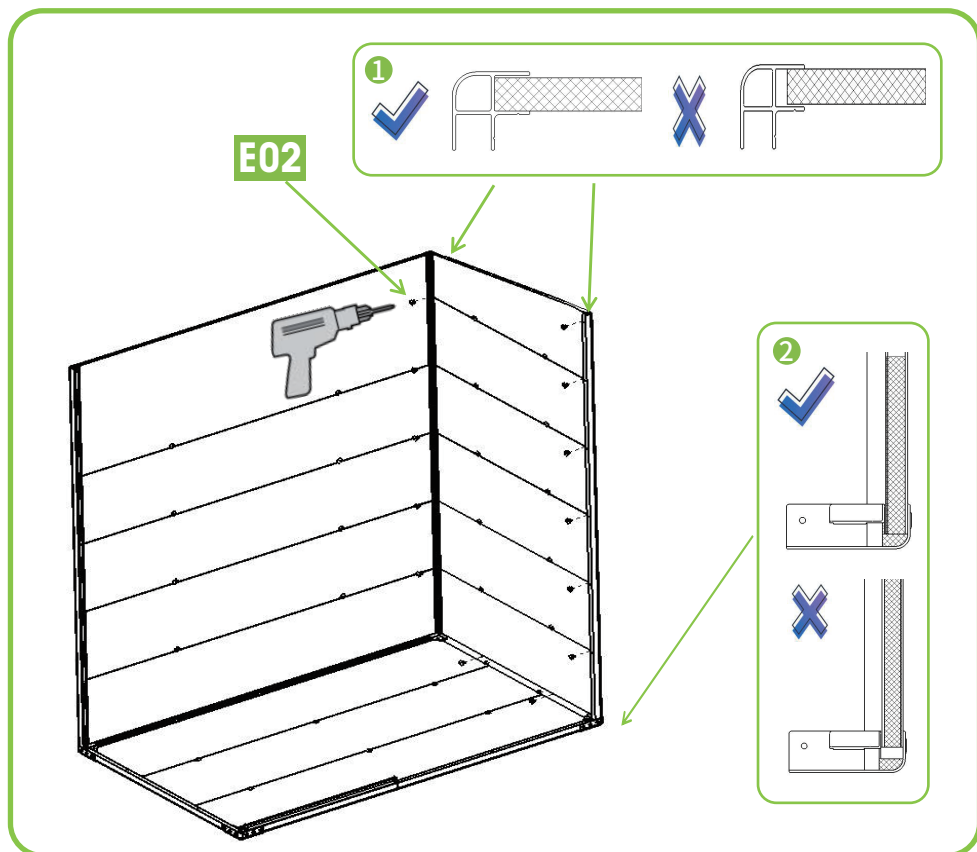


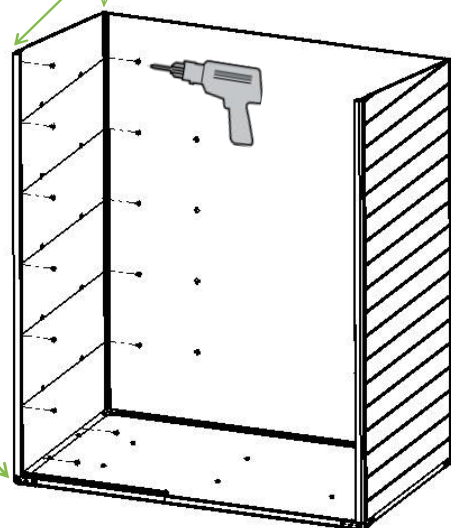
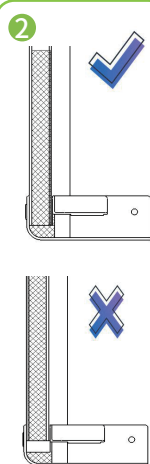
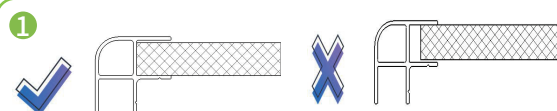
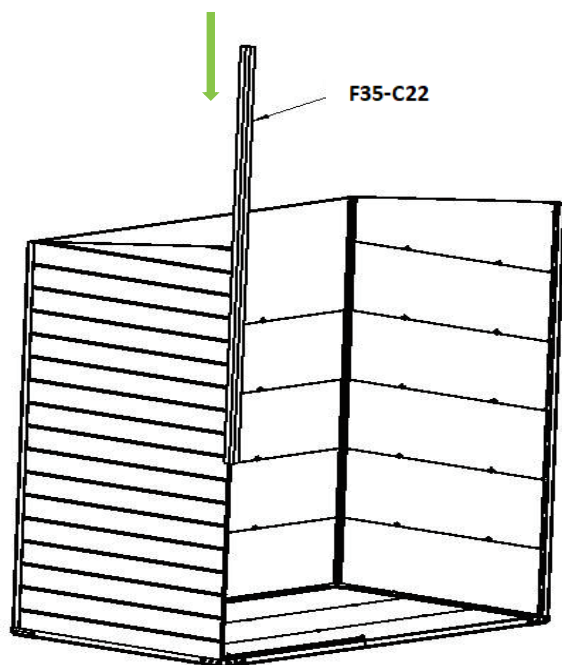
PRODUCT ASSEMBLY

11

PART	NO.	QTY.	PART	NO.	QTY.
		1		F35-C22	2
		1		E02	26

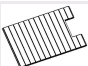
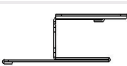
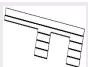

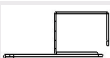



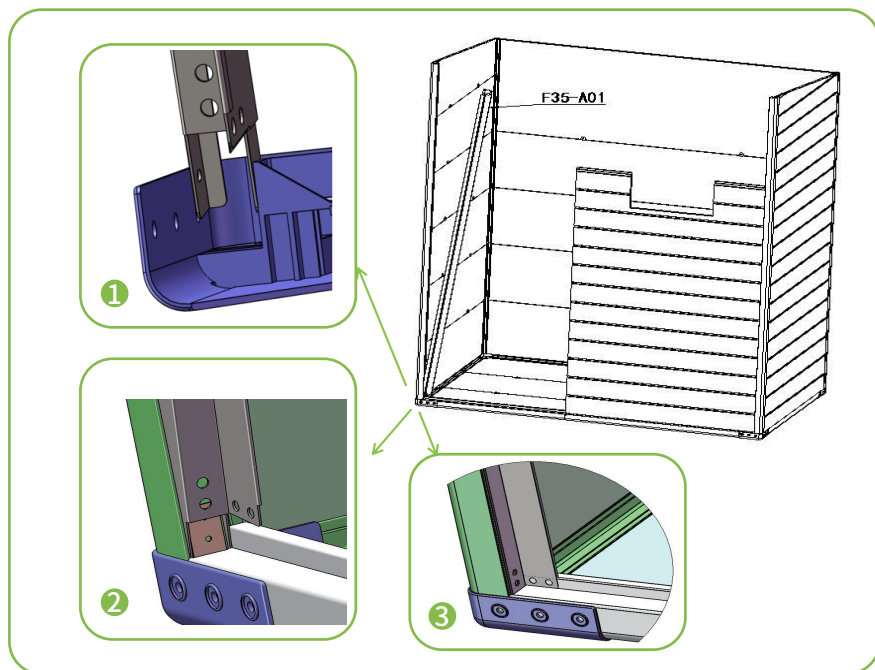
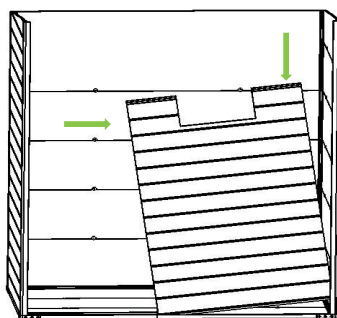


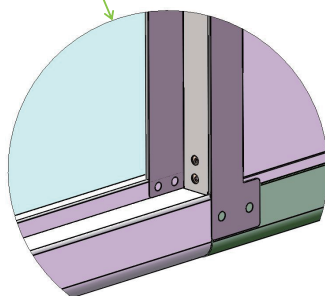
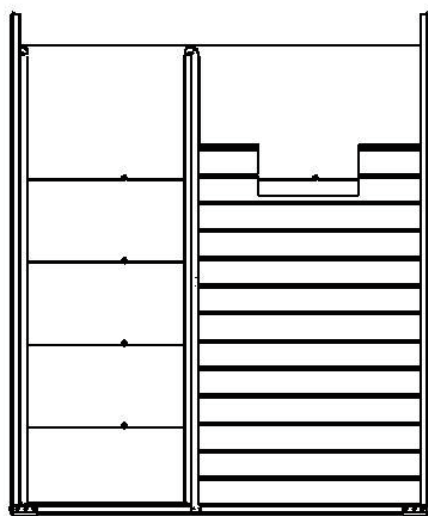
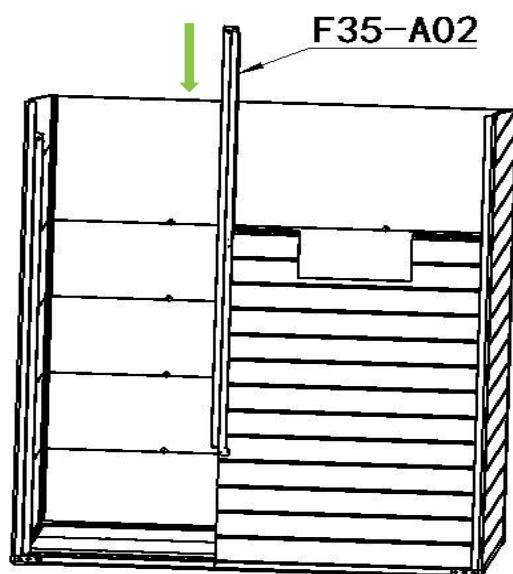


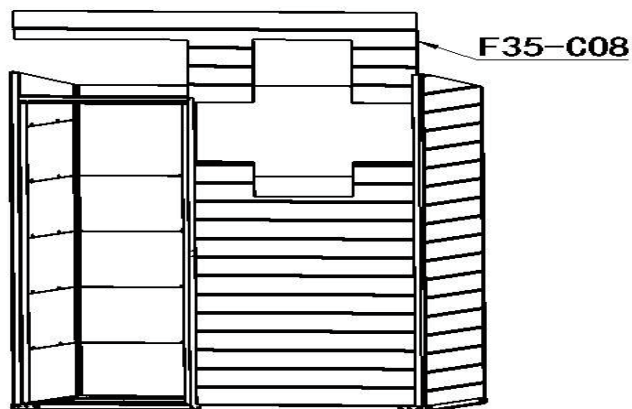
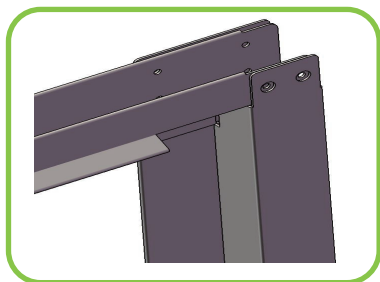
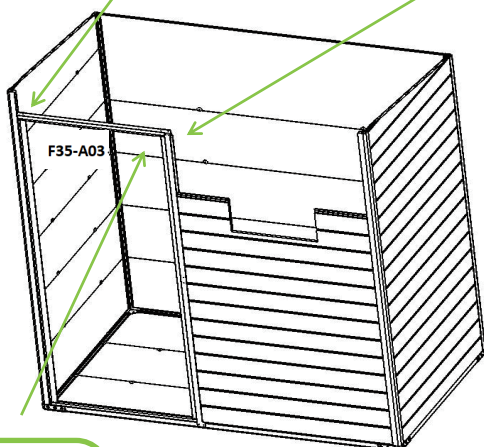
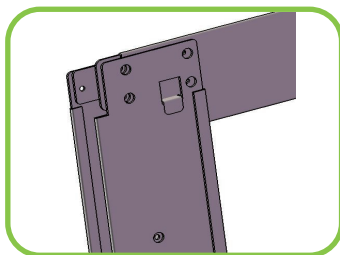
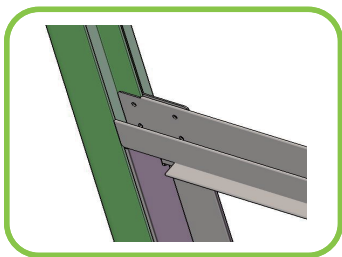
PRODUCT ASSEMBLY

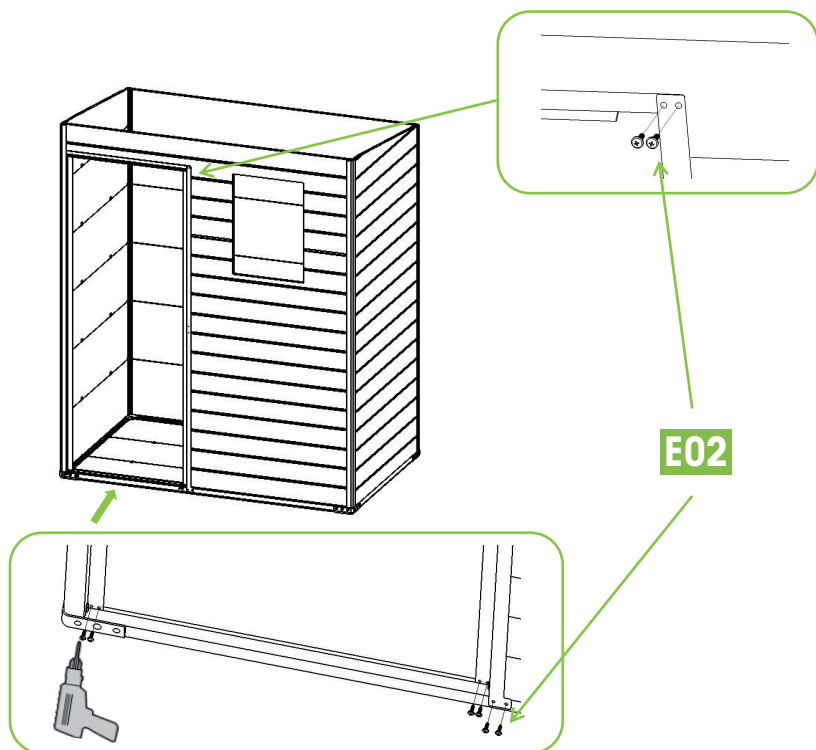
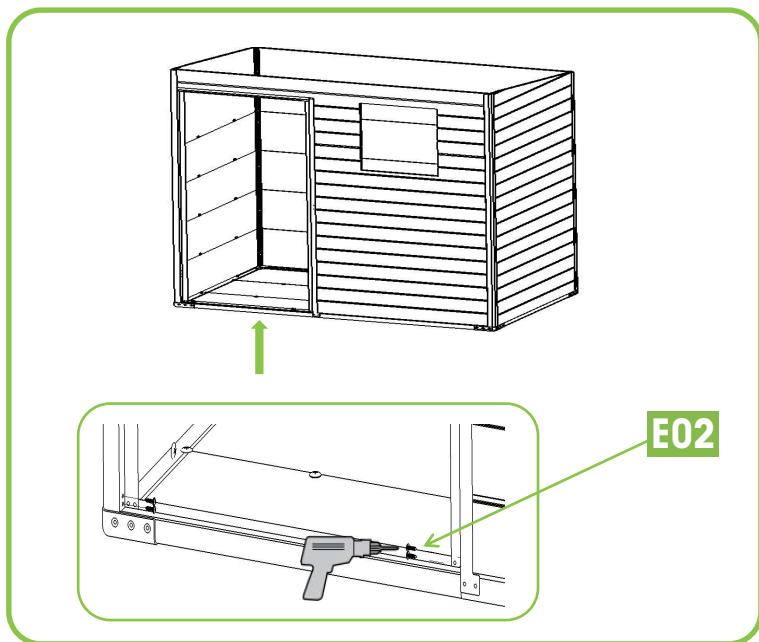
12

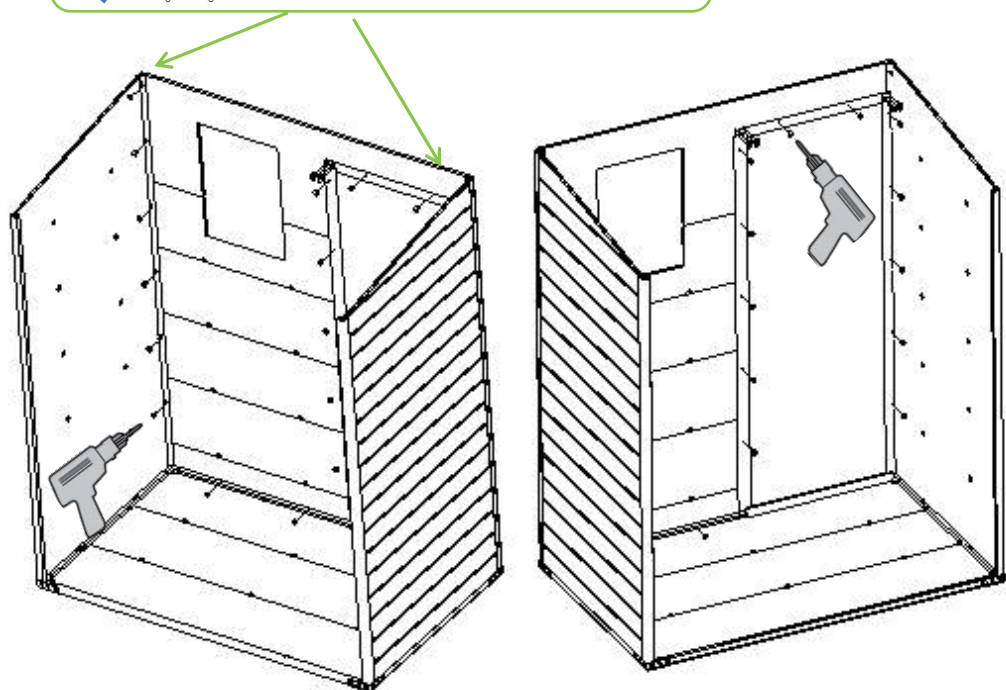
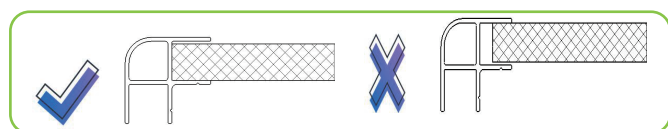
PART	NO.	QTY.	PART	NO.	QTY.
		1		F35-A02	1
	F35-C08	1		F35-A03	1
	F35-A01	1		E02	40







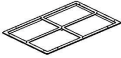



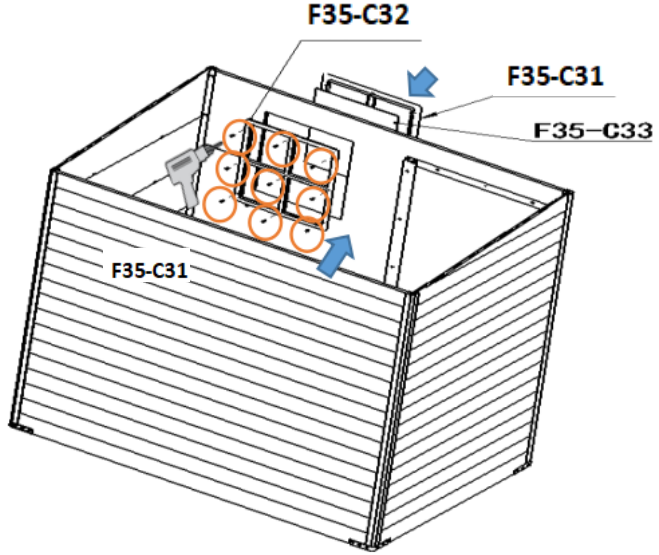




PRODUCT ASSEMBLY



13

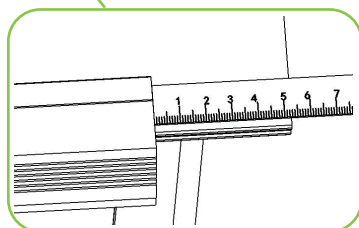
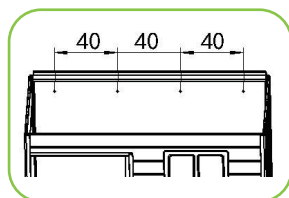
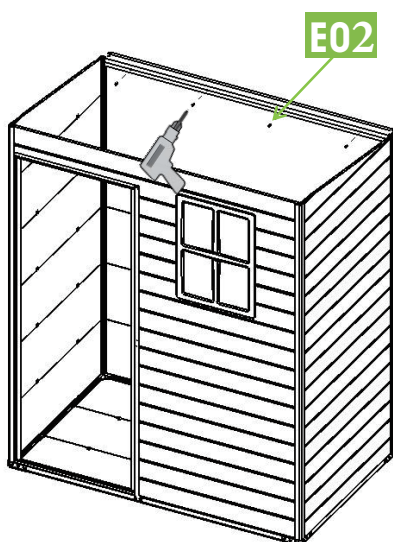
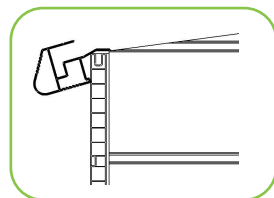
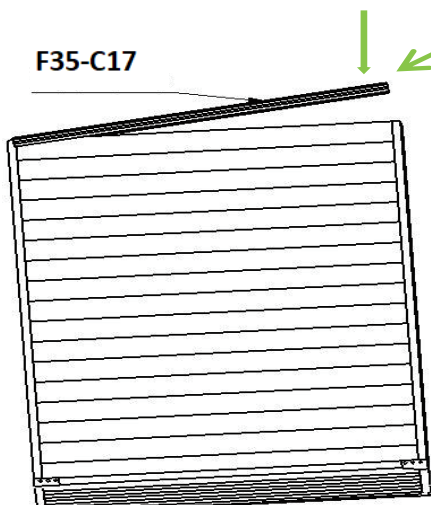
PART	NO.	QTY.	PART	NO.	QTY.
	F35-C31	1		F35-C33	1
	F35-C32	1		E02	9



PRODUCT ASSEMBLY

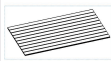

14

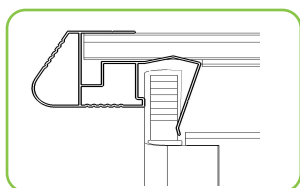
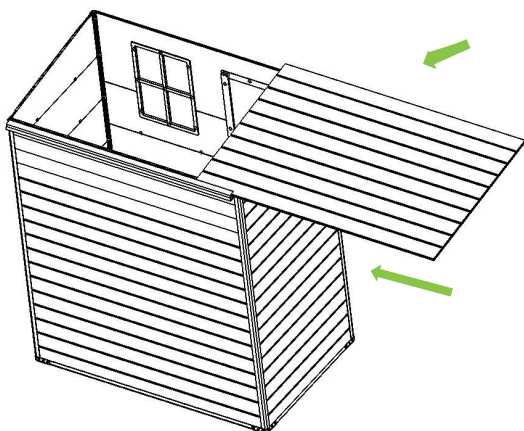
PART	NO.	QTY.
	F35-C17	1
	E02	4



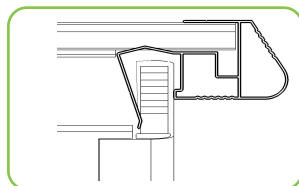
PRODUCT ASSEMBLY

15

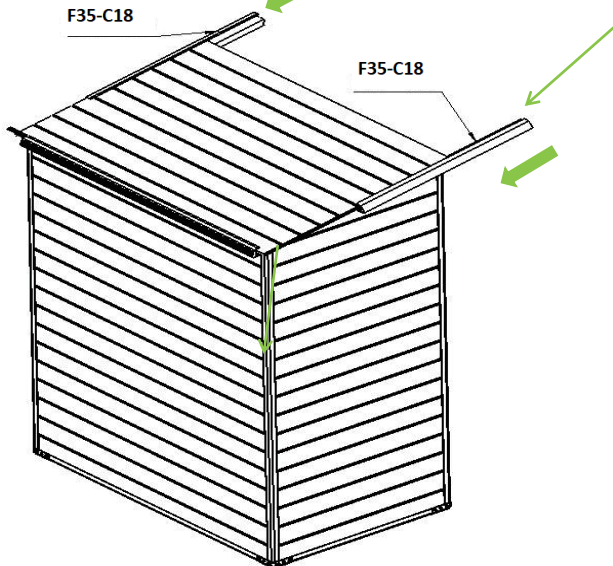
PART	NO.	QTY.
		1
	F35-C18	2



F35-C18



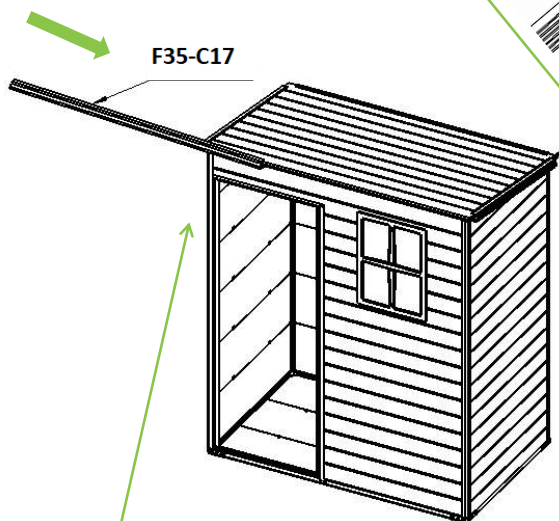
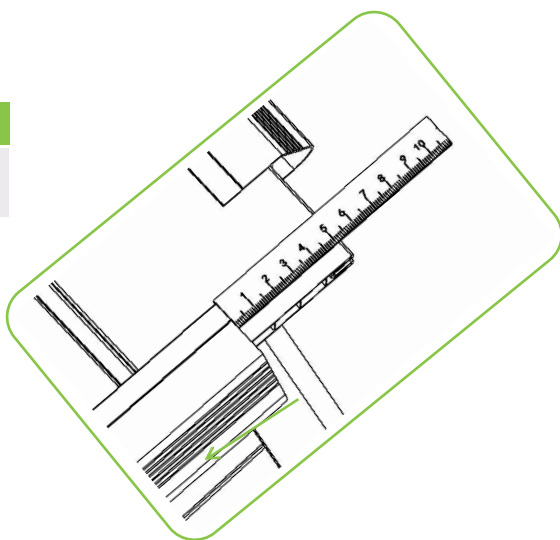
F35-C18



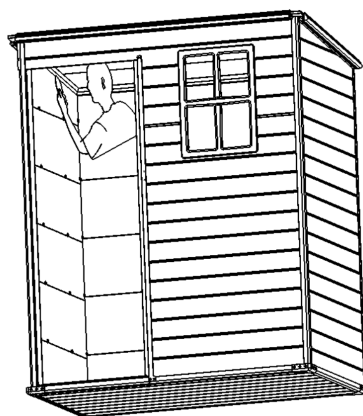
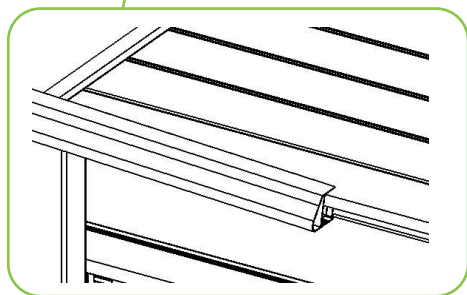
PRODUCT ASSEMBLY

16

PART	NO.	QTY.
	F35-C17	1




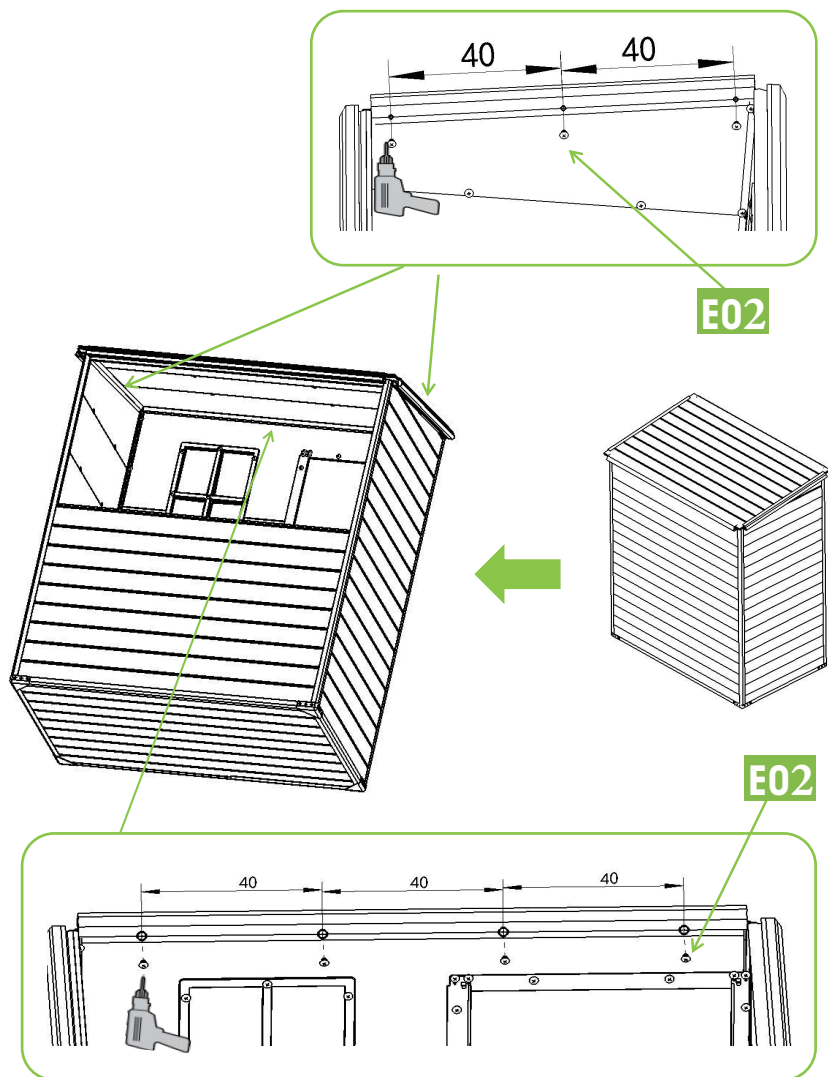
Please use rubber knife to help C17/C18 stick into the wall board



PRODUCT ASSEMBLY



17

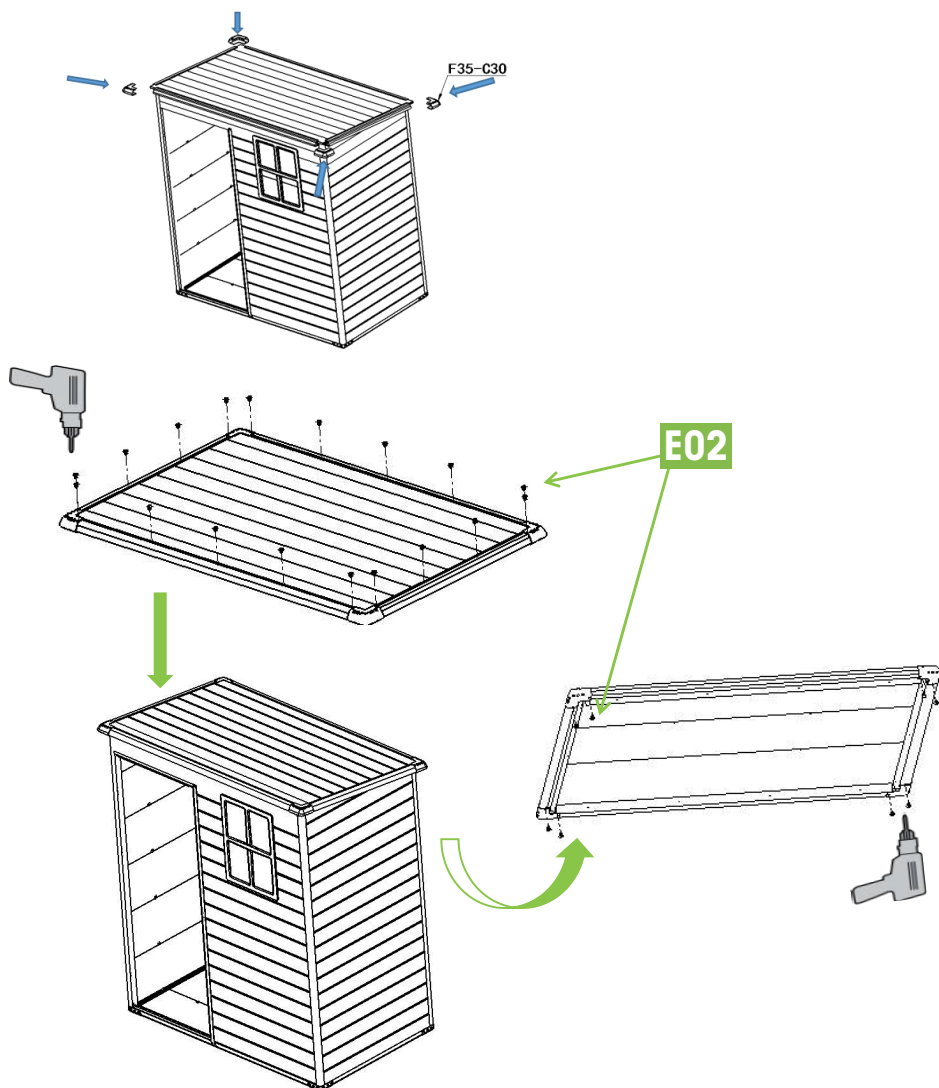
PART	NO.	QTY.
	E02	10



PRODUCT ASSEMBLY


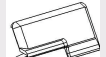

18

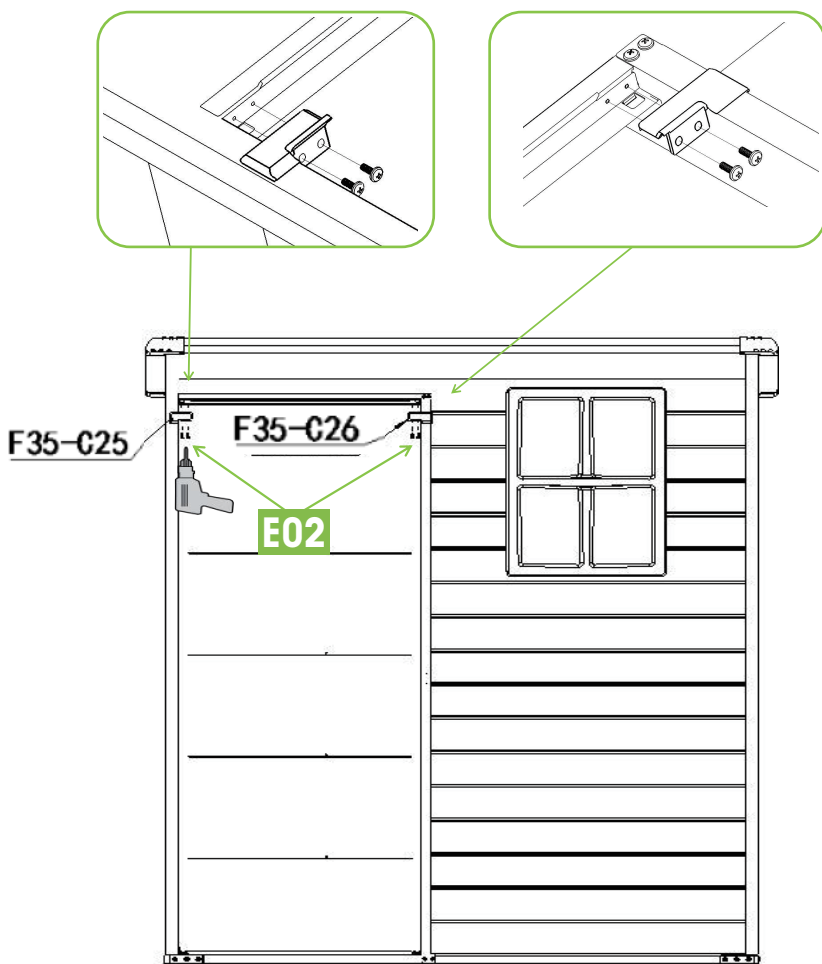
PART	NO.	QTY.
	F35-C30	4
	E02	26



PRODUCT ASSEMBLY


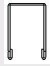



19

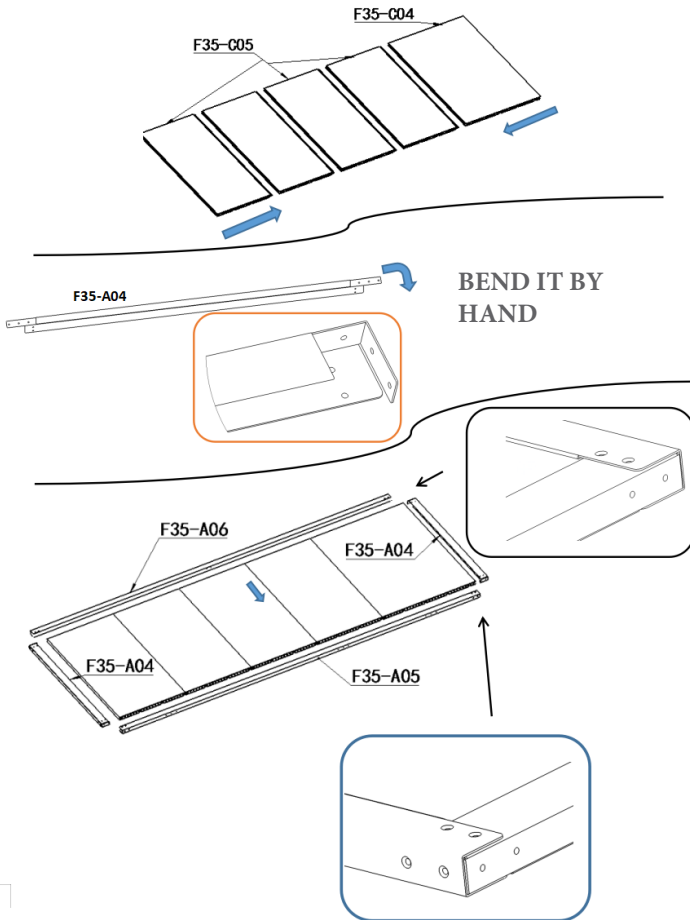
PART	NO.	QTY.
	F35-C25	1
	F35-C26	1
	E02	4



PRODUCT ASSEMBLY



20

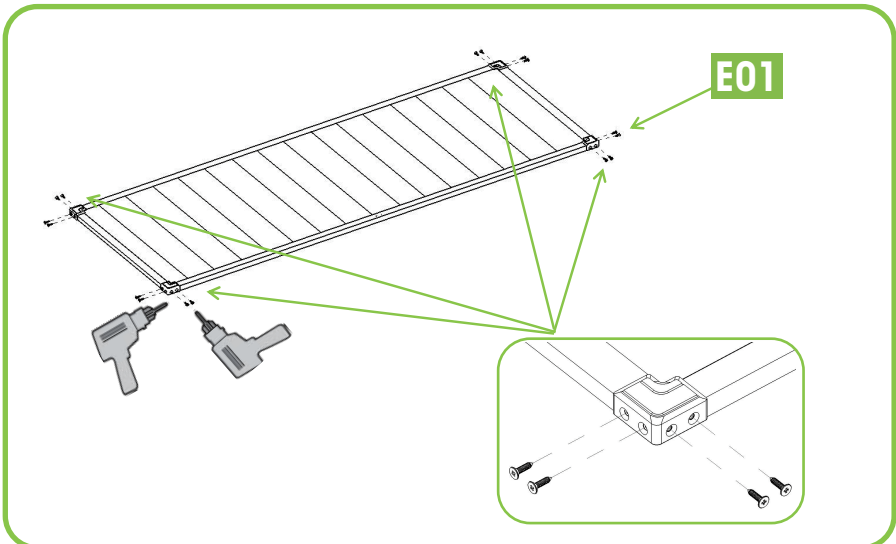
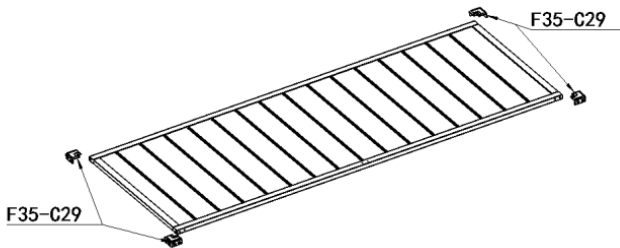
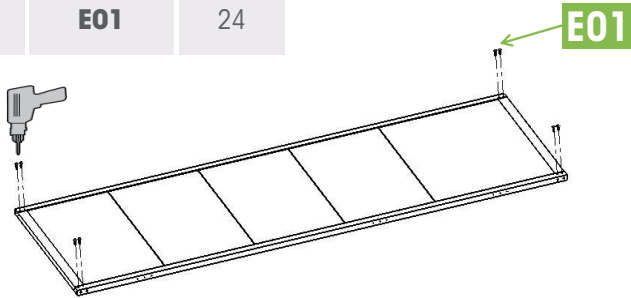
PART	NO.	QTY.	PART	NO.	QTY.
	F35-C04	1		F35-A05	1
	F35-C05	4		F35-A06	1
	F35-A04	2			



PRODUCT ASSEMBLY

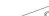

21

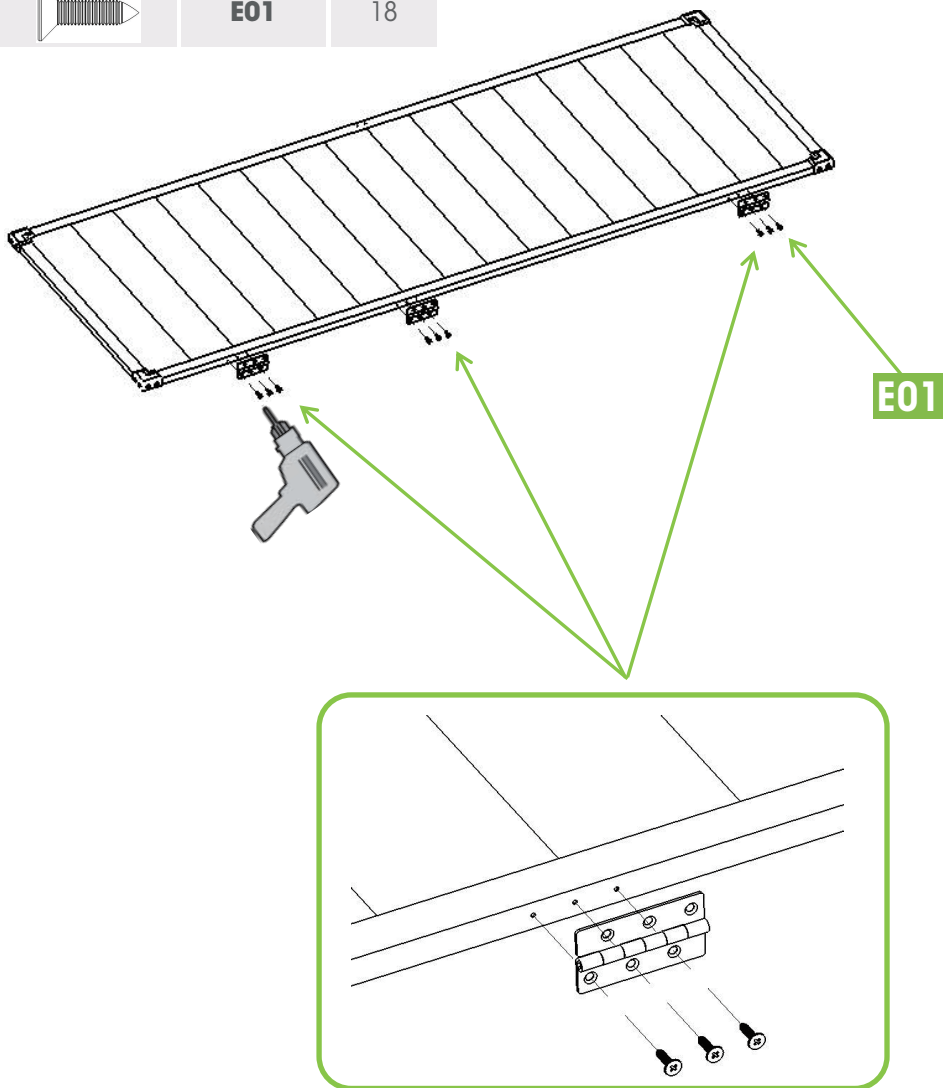
PART	NO.	QTY.
	F35-C29	4
	E01	24

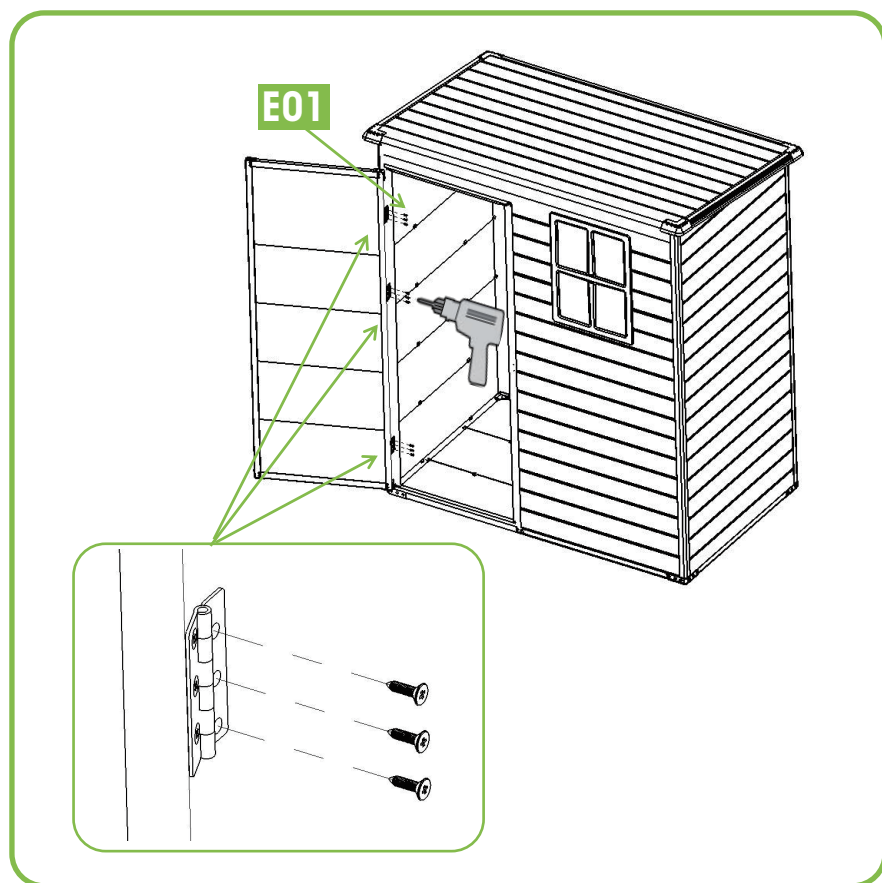
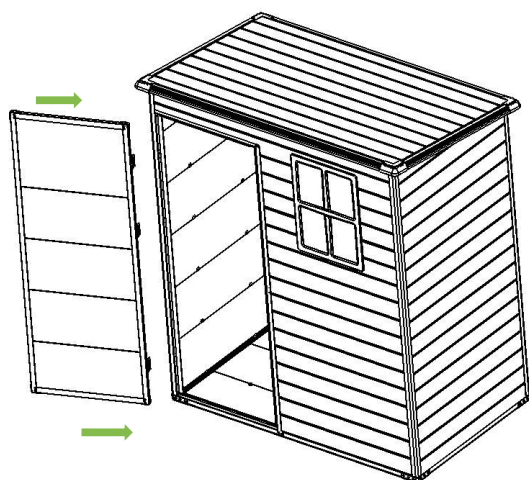


PRODUCT ASSEMBLY

22



PART	NO.	QTY.
	F35-D01	3
	E01	18



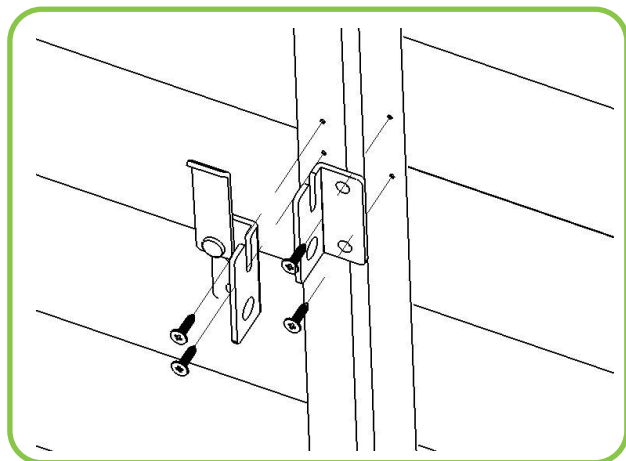
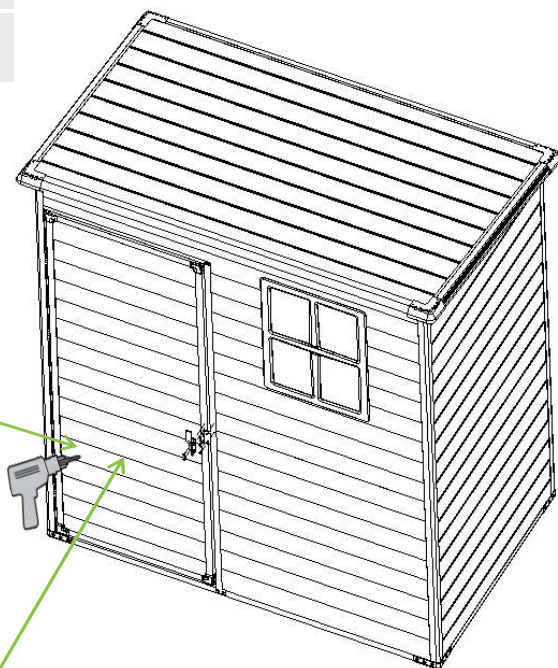


PRODUCT ASSEMBLY

23

PART	NO.	QTY.
	F35-D02	1
	E01	4

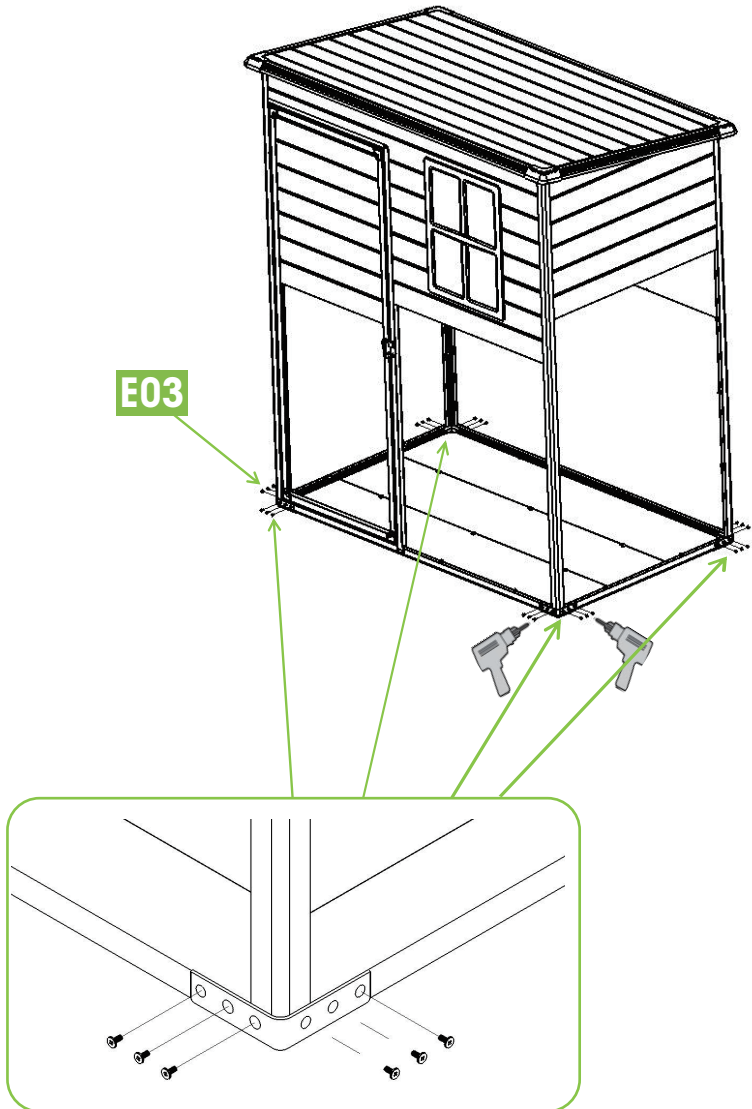
E01



PRODUCT ASSEMBLY


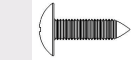
24

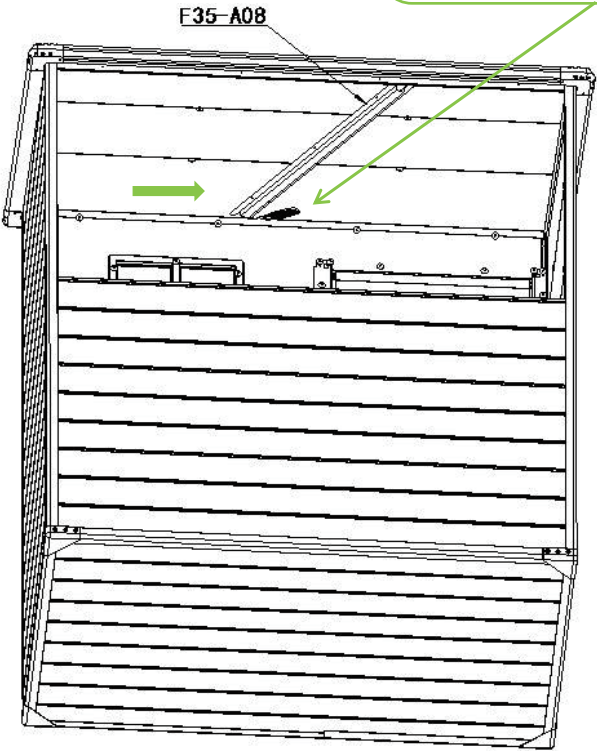
PART	NO.	QTY.
	E03	24

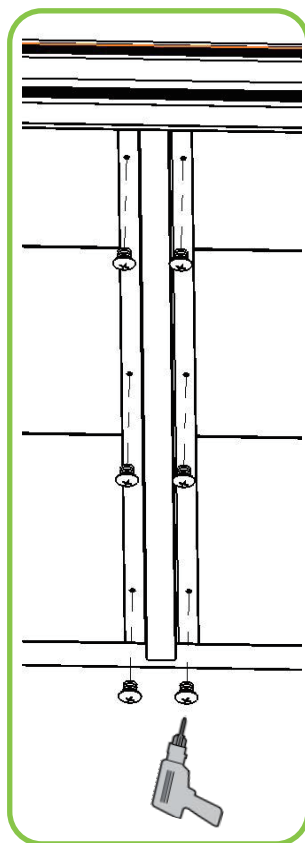
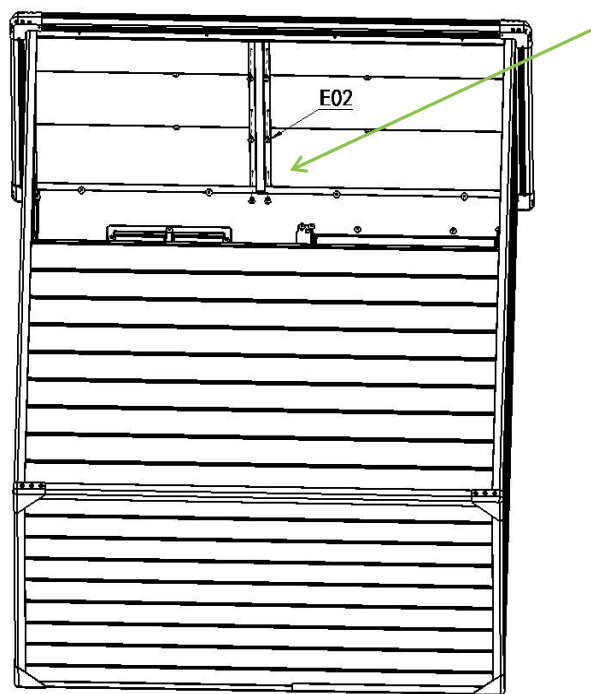


PRODUCT ASSEMBLY

25

PART	NO.	QTY.
	F35-A08	1
	E02	6

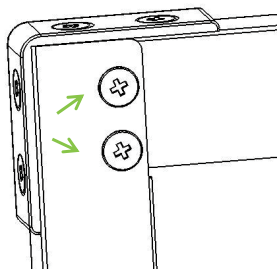




ATTENTION!!

When the door is not vertical or parallel after installation, please make appropriate adjustments according to the following figure

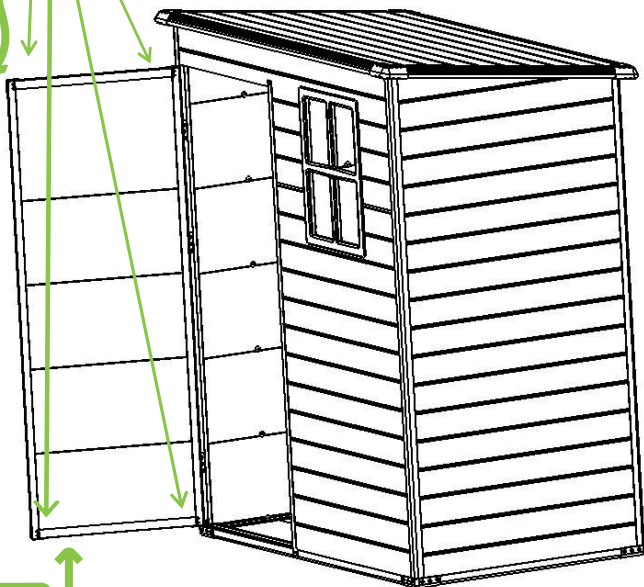
1. Loosen the screws



2. If the door corner is tilted upward, press the corner with your hand, pull it upward slightly, and lock screws

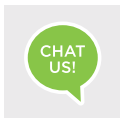


3. If the door corner is tilted down, hold the corner with your hand, pull it upward slightly, and lock screws



HELP CENTER

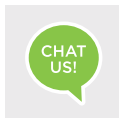
Question about your product? We're here to help. Visit us at:



Chat Support



Product Inquiry



Orders FAQ



Product Assembly



Returns & Refunds

We Stand Behind the Quality of Their Furniture

If you have any issues with your item please let us know! We will always do our best to come up with a solution that you will be happy with.

Please get in touch with our customer service team before returning the product.

And pls do not throw the original box(es) if you have not finished assembling or confirmed no quality issues.

Length of return period:

Items can be returned within 30 days of purchase.

In the meanwhile, everything you purchased from us comes with a one-year warranty.

Who is responsible for the return shipping fee:

We will cover the return shipping fees if:

1. Your item has a manufacturing defect in its materials or workmanship. For example, torn wicker or misaligned screw holes. We will send you a prepaid shipping label after photos are sent.
2. Your item has been damaged in transit. For example, glass is broken or wicker is damaged. We will send you a prepaid shipping label after photos are sent.
3. You receive the wrong box(es) due to a warehouse error. We will send you a prepaid shipping label after photos are sent of the wrong SKU numbers on the outer box(es).
4. One or more boxes are lost in transit. We will send you a prepaid shipping label if you no longer want the item.

*However, we still hope to work with you for a better solution instead of a return. Please don't hesitate to contact our customer service team.

Customer will cover the return shipping fees if:

1. You don't like the product(s) after receiving the box(es).
2. You no longer need the product(s) but you have received the box(es).
3. You buy the product(s) by mistake but you have received the box(es).
4. Order/Shipment cancellation failed and you have received the box(es).

Return Request

In order to get a full refund as described in this return policy, all items must be: (1) In a brand new/unused condition, please provide photos before and after packaging. (2) When returning, all accessories and parts are firmly packed in all original packaging.

If your return does not meet the requirements, you may not get a full refund.

When will I be refunded?

The refund is released once the goods have been returned to our warehouse.

What if the product is damaged/defective outside of the valid return period?

We want you to be a happy customer. Please reach out to us by email and we will come up with a solution to make sure you are satisfied.