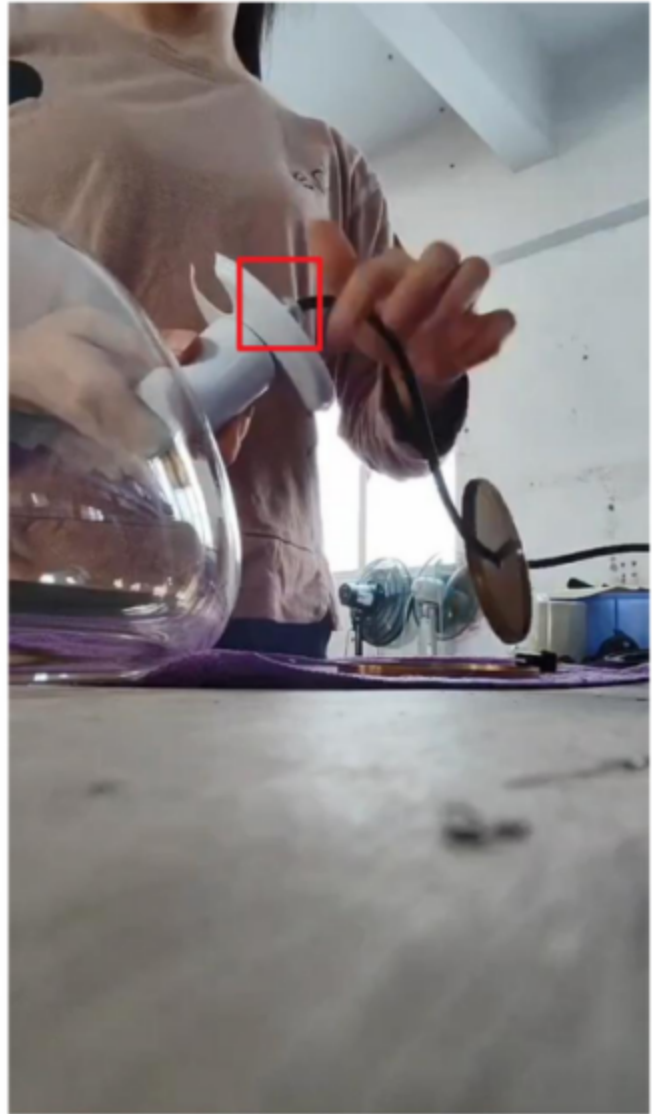


Assembly Instructions for
Model HL1289440



Installation Steps

1. Remove the two metal discs at the top of the lamp head and tighten the nuts on the threaded tube.



2. Insert the white disc into the inner white lampshade. Cover the outer metal disc with the matching nuts.



3. Insert the outer lampshade from the top, then the outer metal disc and secure with the matching wire cap.



4. Remove the mounting bracket from the ceiling canopy on the fixture body. Mark the drilling position on the ceiling with the help of the mounting bracket. Drill holes on the marks and stick the expansion anchors into the holes. Fix the mounting bracket to the expansion anchors with self-tapping screws.

5. Hold the fixture close to the ceiling.

Connect the live wire to one of the two wires from the fixture body.

Connect the neutral wire to the other wire from the fixture body.

Note: If you have a driver, first connect the lighting fixture wire (marked with \pm) to the driver output terminal (marked with \pm). Connect the + side of the lighting fixture wire to the + side of the driver, and the - side of the lighting fixture wire to the - side of the driver. There's no need to distinguish between the live and neutral wires at the driver input; simply connect the power wires one-to-one.

6. Install the canopy onto the mounting brackets.

Your fixture is now assembled and ready to use.