

Dining Table

1

Notice:

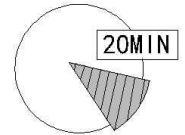
This box kit is a connecting screw kit for 1.6 meter countertops, please use this kit to install 1.6 meter countertops, the kit in the foot carton is a connecting screw accessory for 1.4 meter countertops, please scrap it.



Recommended installers: 2



Put a carpet on the floor before unpacking







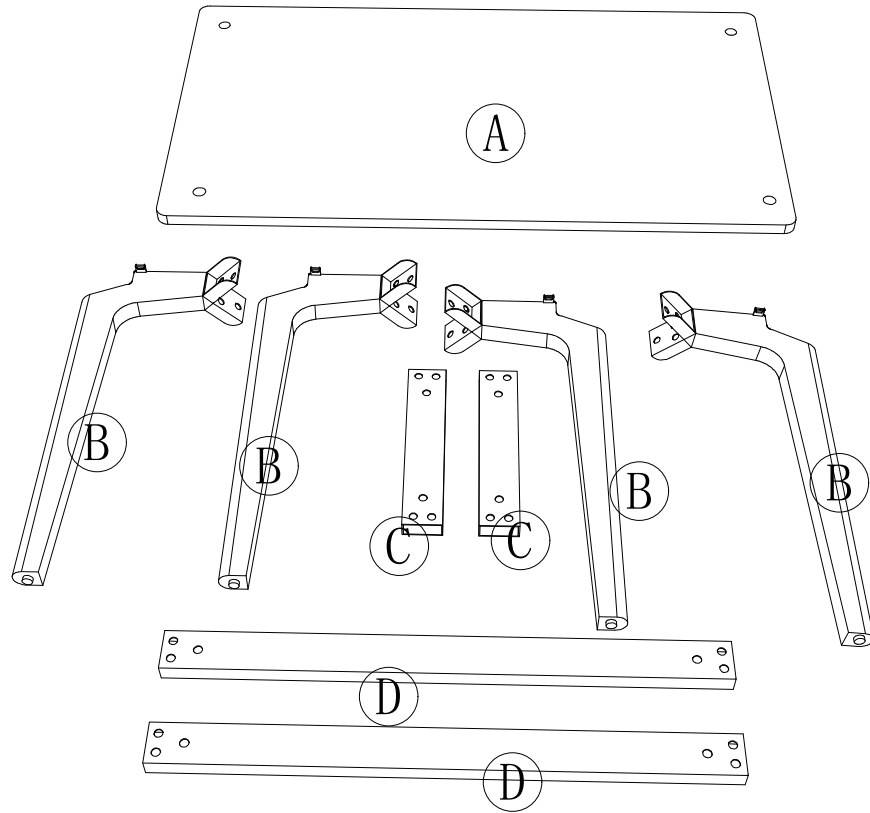
Estimate installation time: 20 minutes

Item no.	Reference Image	Qty
A		X1
B		X4
C		X2
D		X2

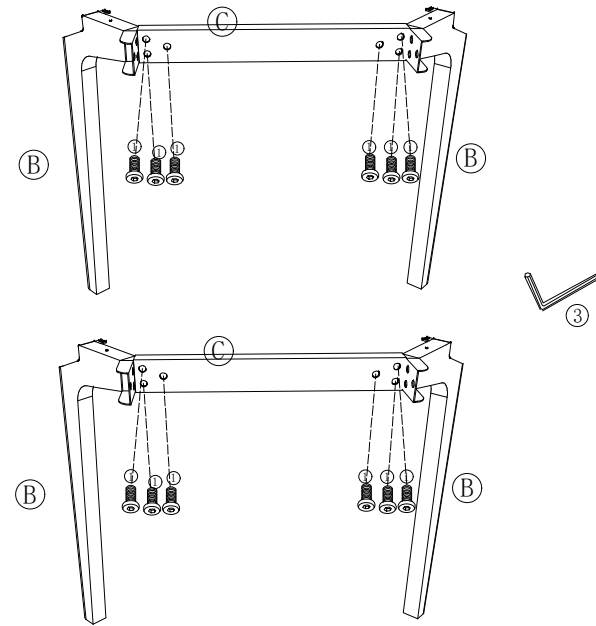
Item no.	Reference Image	Qty
1	55IN:M8*16 or 63IN:M8*10	X29
2		X4
3		X1
4		X4

2

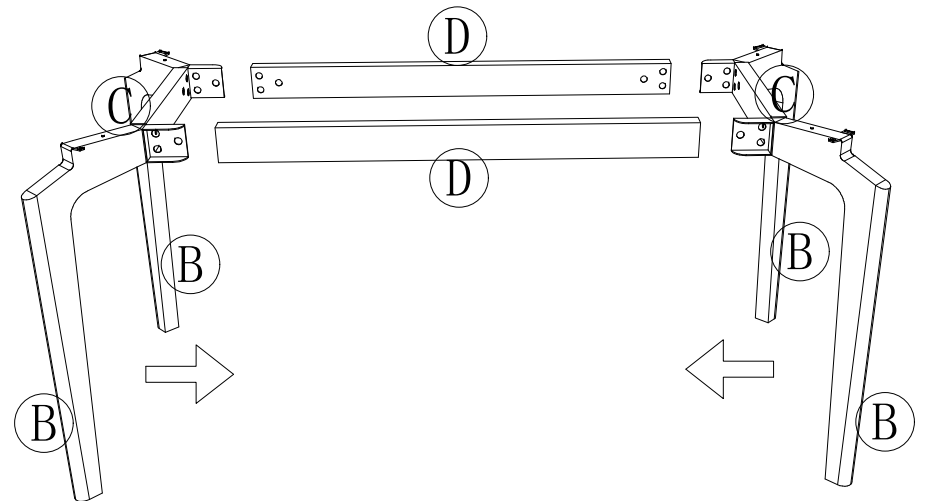
- ①  X29 ②  X4 ③  X1 ④  X4



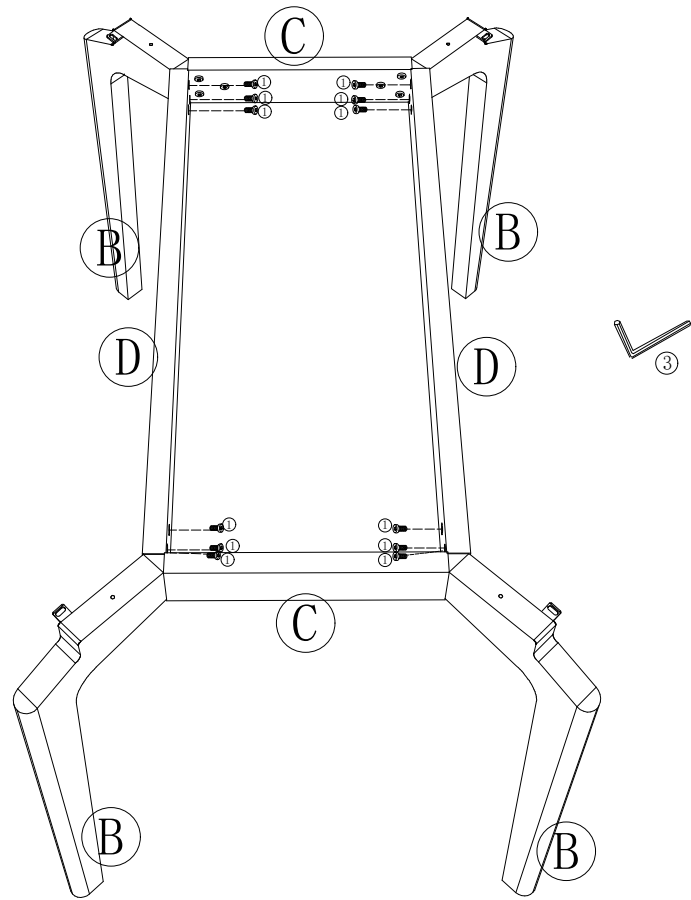
step1



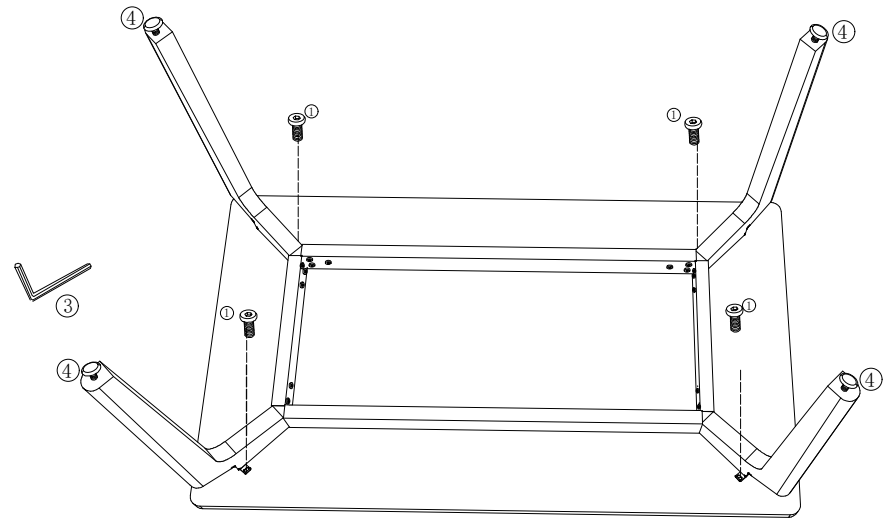
step2



step3



step4



Final

