



Installation Instructions

Stick Anywhere Light

MB720

Thank you for purchasing the Mr Beams® Stick Anywhere Light. We are committed to eliminating darkness using the latest in Light-Emitting Diodes (LEDs). LEDs are the most efficient and durable light sources available. We are certain that your light will contribute to a safer environment and provide light where you need it at a very reasonable cost.

What is included per light:

- Wireless LED Stick Anywhere Light
- 2 Screws & Double Sided Tape
- Mounting Bracket

What you need to install:

- 1 Small Screwdriver
- 4 AA-Cell Alkaline Batteries (per light)

Stick Anywhere Light Features:

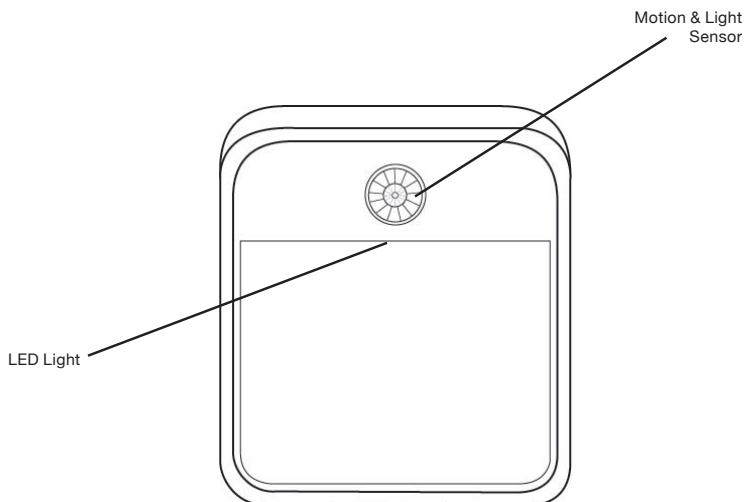
Motion/Light Sensor: Light instantly turns on when it detects motion from up to 15 feet away. The light sensor conserves battery life by preventing the light from activating in daylight.

Auto Shut-off: Stick Anywhere Light shuts off automatically after 30 seconds if no motion is detected.

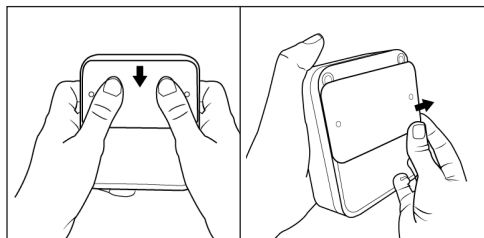
Bright LED: 20 Lumens covers up to 10 sq ft.

Tips:

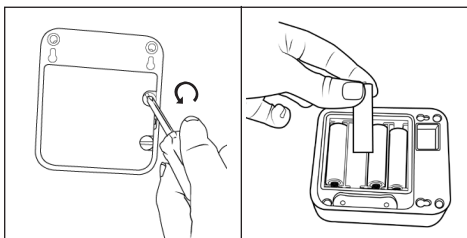
- Use only new alkaline AA-Cell batteries with 1.5V rating.
- Do not mix old and new batteries. If batteries are not new, it may cause the light to malfunction.
- Install batteries with polarity in correct position.
- Light may activate when batteries are inserted. Simply take light into a dark room. Allow batteries to settle, then test activation.
- **If your light will not turn off, it means that it is time to replace the batteries.**



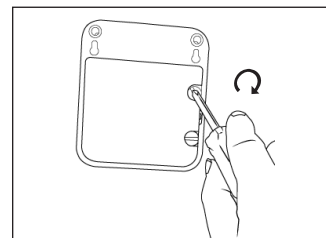
NOTE: Light sensor only allows light to activate in darkness. We recommend you test in a dark room or closet.



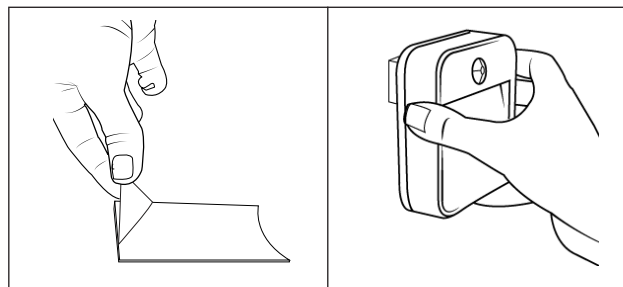
1. Remove mounting bracket from back of light.



2. Remove battery door by turning 2 thumb screws counter clockwise. Insert 4 Fresh AA alkaline batteries.

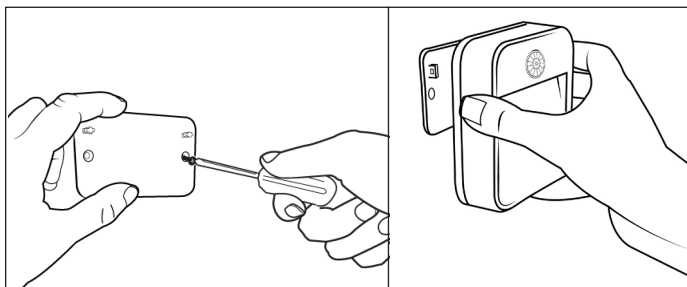


3. Close battery door and replace thumb screws.



4. To mount with adhesive, peel the sticker and stick to the mounting bracket. Then hold bracket against the wall for 5 seconds. Slide light onto mounting bracket.

Note: This is a strong adhesive that may cause damage to mounting surface.



5. To mount with screws, make pilot holes and drive screws into the wall. Then slide the light onto the mounting bracket.

Battery Caution:

- 1) Do not mix old and new batteries
- 2) Do not mix Alkaline, Standard (Carbon-Zinc) or Rechargeable (Nickel Cadmium) or (Nickel Metal Hydride) batteries
- 3) Do not dispose of batteries in fire
- 4) Batteries should be recycled or disposed of as per state and local guidelines