



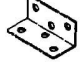






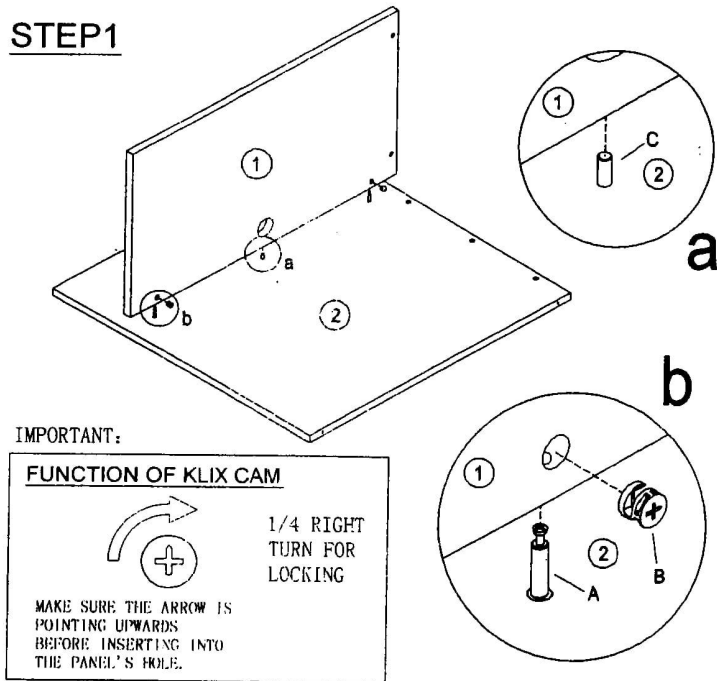
Assembly Instructions

R2/06

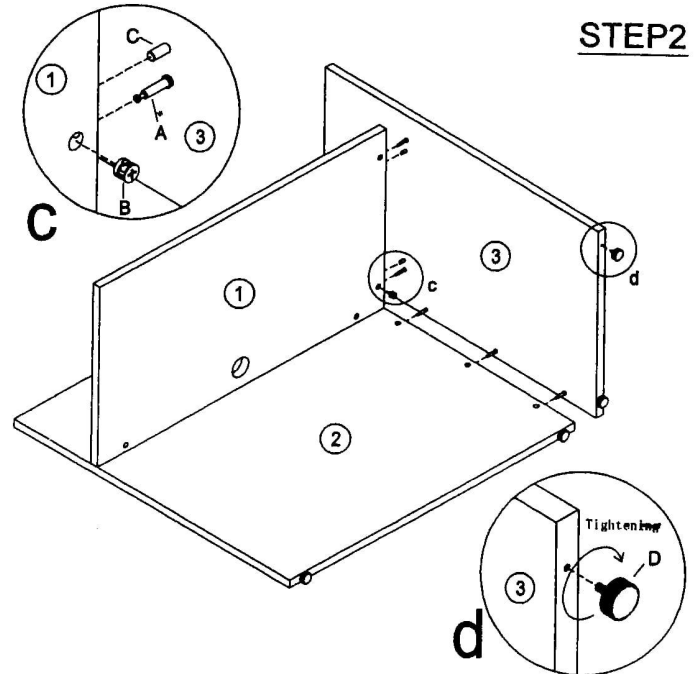
GALLERY RETURN

TUN010CL	TUN011KC	TUN026	TUN021AG	TUN013LB	TUN0191B	TUN018SC	TUN015BG	TUN012HC
A  Cam LOCK 8PCS	B  Klix Cam 8PCS	C  Dowel 3PCS	D  Adjustable Glide 2PCS	E  6 Hole L-Bracket 3PCS	F  I-Bracket 3PCS	G  Screw #4x5/8" 36PCS	H  60mm Black Grommet 1PCS	I  Sticker 20PCS

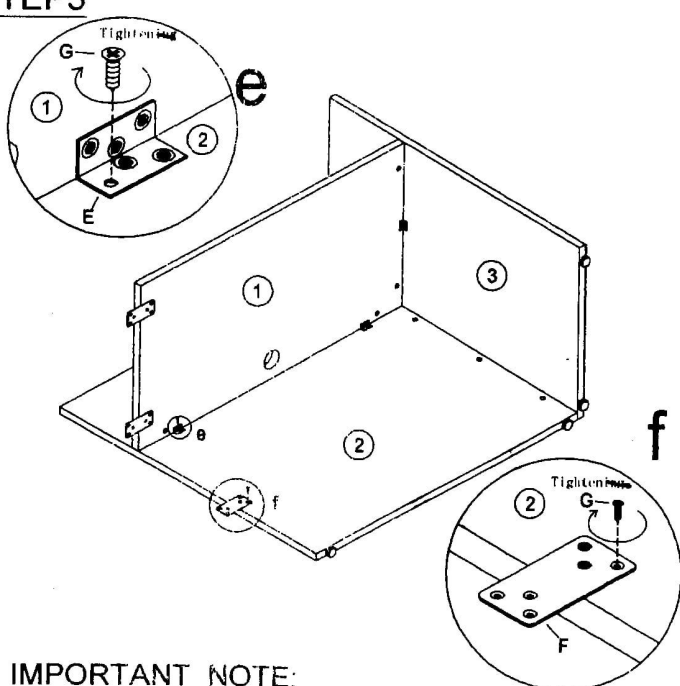
STEP1



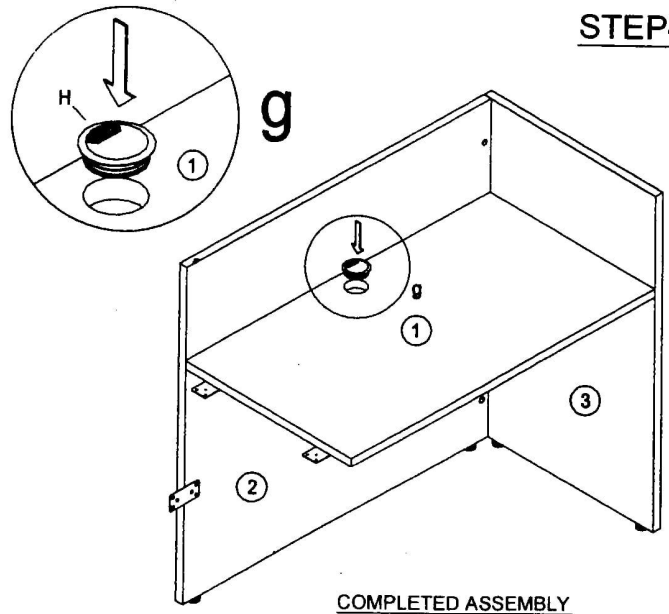
STEP2



STEP3



STEP4



IMPORTANT NOTE:

- Place all laminated parts on a clean and smooth surface such as a rug or carpet to avoid the parts from being scratched.
- Check to be sure that you have all parts and hardware.
- Remove all wrapping materials, including staples & packing straps before you start to assemble. Don't tighten all