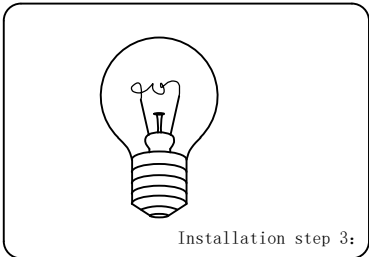
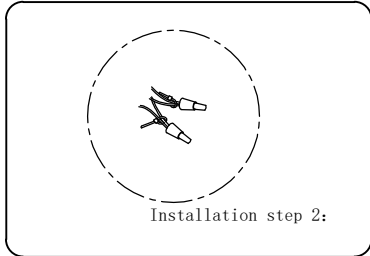
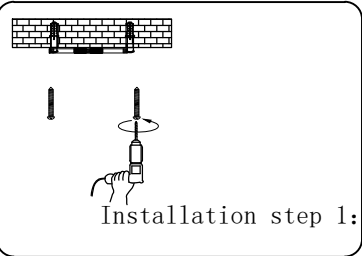
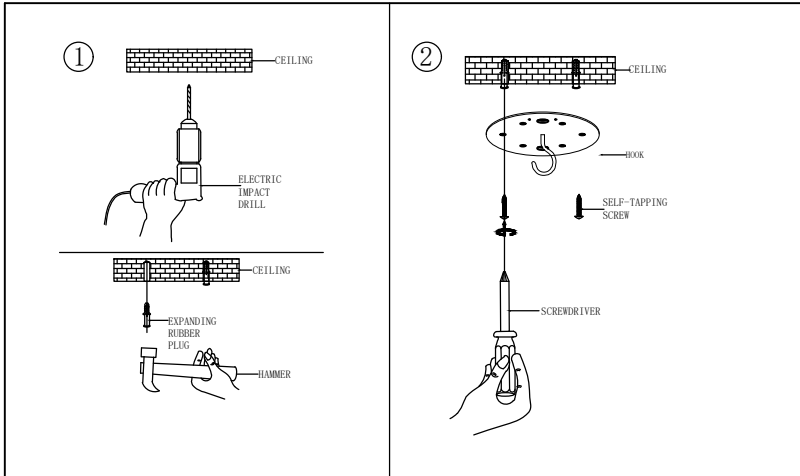


Model:

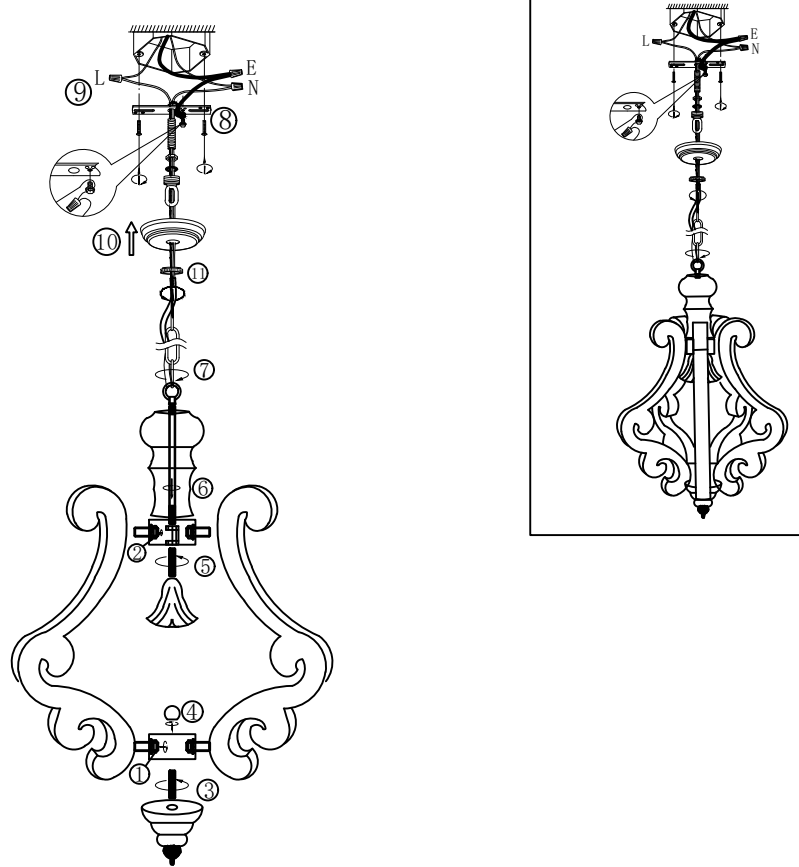


When the lamp is installed, the center should not be locked too tight, to be fully fixed to the lamp arm. When it is on the subject, it is completely solid. Fixed center main nut

Install small helper:



Installing sketch Map



Maintenance

1. Voltage/Frequency: 110v 50-60Hz
2. Please wear gloves to install.
3. Don't install it on the moist ceiling.
4. Turn off the power before cleanout.
5. Please wash with the sanitizer without corrosivity.
6. Please install according to the installation

Precautions

Keep the lighting away from acidic chemical solvent or the galvanized surface of the lighting will be damaged.

Installation Manual:

Please see the installing sketch map and install the parts in the right order.