

## The factory left corner section

by Ramón Esteve

Vondom's The Factory collection, designed by Ramón Esteve, is inspired by the cast-iron architecture of New York. This collection combines an industrial aesthetic with modern comfort, offering a selection of furniture that brings character and sophistication to any outdoor space.



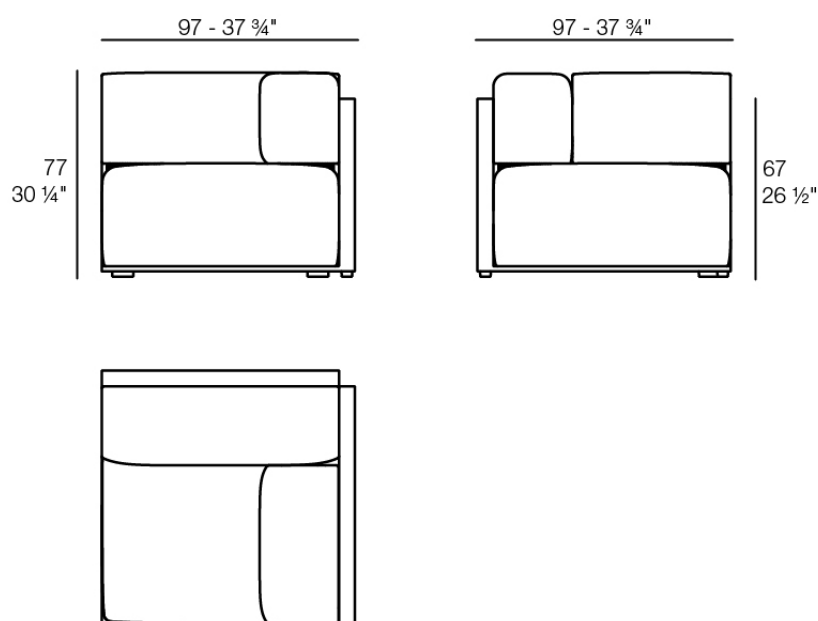
## Info

---

### Description

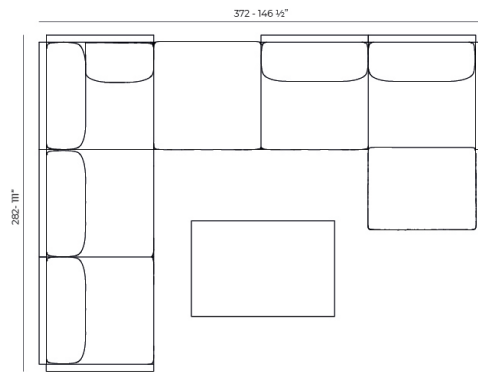
Made from aluminum and with a very comfortable padding. Our fabrics are available in a wide range of colours and very pleasant to touch. This collection is suitable for an indoor and an outdoor use.

Weight: 32.81 Kg

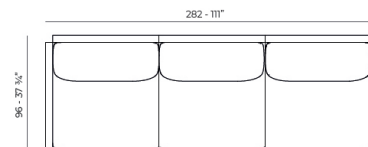


THE FACTORY Sofá Módulo Esquina Izquierda  
THE FACTORY Sectional Sofa Corner Left

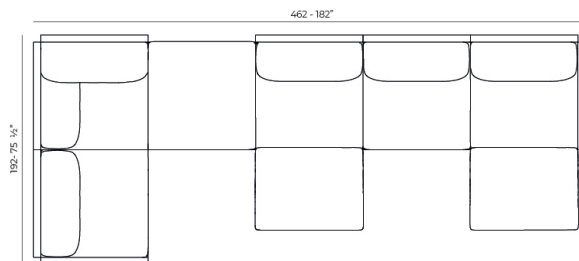
## Combinations



- 1 x 54601 Sofá Brazo Derecho - Sectional Sofa Right
- 1 x 54608 Sofá Chaiselongue Izquierdo - Sectional Chaiselongue Left
- 2 x 54605 Sofá Módulo Central - Sectional Armless
- 1 x 54606 Sofá Puff M - Sectional Puff M
- 1 x 54603 Sofá Esquina Derecha - Sectional Right Corner



- 1 x 54601 Sofá Brazo Derecho - Sectional Sofa Right
- 1 x 54602 Sofá Brazo Izquierdo - Sectional Sofa Left
- 1 x 54605 Sofá Módulo Central - Sectional Armless



- 1 x 54601 Sofá Brazo Derecho - Sectional Sofa Right
- 1 x 54608 Sofá Chaiselongue Izquierdo - Sectional Chaiselongue Left
- 1 x 54605 Sofá Módulo Central - Sectional Armless
- 1 x 54606 Sofá Puff M - Sectional Puff M
- 1 x 54604 Sofá Esquina Izquierda - Sectional Left Corner
- 1 x 54609 Sofá Chaiselongue Central - Sectional Armless Chaiselongue

## Finishes

---

### finishes

---

#### ALUMINIUM

Ref. 54604



white



smoked



ecru



tortora



cream



garnet



brown



green



blue



gray



anthracite



black

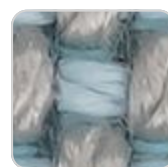
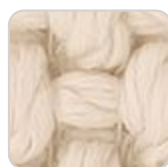
Lacquered aluminium profile.

### fabric

---

#### GETARIA

Ref. 54600CO



# VONDOM

oasis 10007 getaria



blue 10024 getaria

cream 10047 getaria



black 10044 getaria

gallant 10025 getaria



ocean 10023 getaria

pearl 10006 getaria

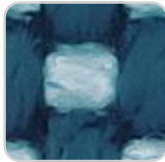


aquamarine 10003 getaria

garnet 10046 getaria



anthracite 10043 getaria



emerald 10016 getaria



oversea 10002 getaria



white 10041 getaria



niord 10015 getaria



moon 10040 getaria



aphrodite 10013 getaria



green 10053 getaria



terra 10039 getaria



dune 10009 getaria



brown 10050 getaria



granite 10008 getaria



tortora 10048 getaria



camel 10033 getaria

Group 2. Premium high density 100% acrylic fabric, available in a wide range of colors.

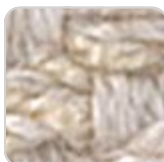
## BAIONA Ref. 54600CO



gray 10113 baiona



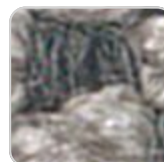
camel 10104 baiona



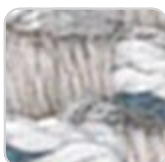
cream 10103 baiona



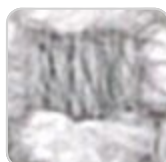
blue 10112 baiona



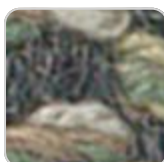
tortora 10102 baiona



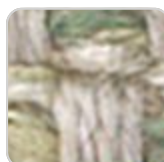
ocean 10111 baiona



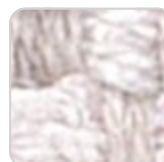
ecru 10101 baiona



green 10110 baiona



jade 10109 baiona



white 10100 baiona

# VONDOM



brown 10108 baiona



garnet 10107 baiona



black 10114 baiona



clay 10106 baiona

Group 1C. High density 100% acrylic fabric, which provides a solid feel. It has an irregular pattern that adds a handcrafted touch.

## CALELLA

Ref. 54600CO



blue 10127 calella



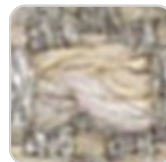
jade 10126 calella



clay 10125 calella



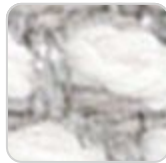
mustard 10124 calella



cream 10123 calella



tortora 10122 calella



ecru 10121 calella



anthracite 10129  
calella



white 10120 calella



gray 10128 calella

Group 1C. PFAS-free 100% acrylic fabric with a rich and unusual texture and an exceptional softness, which enhances the comfort of the furniture.

## FISTERRA

Ref. 54600CO



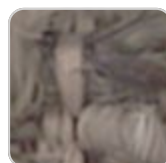
cream 10132 fisterra



white 10130 fisterra



ecru 10131 fisterra



tortora 10135 fisterra



camel 10134 fisterra

# VONDOM



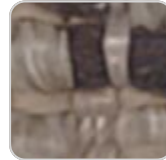
peach 10146 fisterra



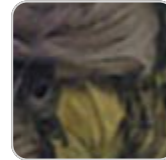
clay 10137 fisterra



garnet 10138 fisterra



brown 10136 fisterra



olive 10145 fisterra



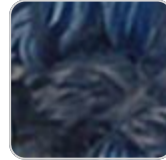
jade 10139 fisterra



green 10140 fisterra



ocean 10141 fisterra



blue 10142 fisterra



gray 10143 fisterra



anthracite 10144  
fisterra



black 10147 fisterra

Group 1C. 100% acrylic fabric, with a distinctive irregular marbled pattern and a soft feel.

## PORTONOVO Ref. 54600CO



blue 10162 portonovo



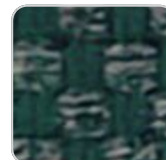
camel 10154  
portonovo



ocean 10161  
portonovo



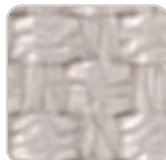
cream 10153  
portonovo



green 10160  
portonovo



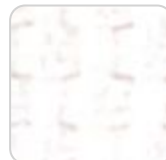
tortora 10152  
portonovo



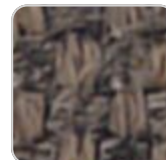
ecru 10151 portonovo



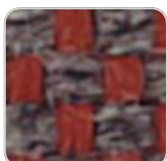
jade 10159 portonovo



white 10150  
portonovo



brown 10158  
portonovo



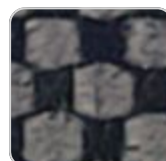
garnet 10157  
portonovo



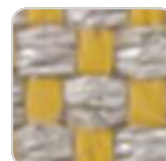
black 10165  
portonovo



clay 10156 portonovo



anthracite 10164  
portonovo



mustard 10155  
portonovo

# VONDOM



gray 10163 portonovo

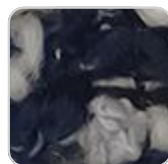
Group 1A. 100% acrylic fabric, with a flat and simple design, which adapts to any decorative style.

## ZUMAIA

Ref. 54600CO



green 10204 zumaia



blue 10203 zumaia



garnet 10202 zumaia



cream 10201 zumaia



white 10200 zumaia



black 10205 zumaia

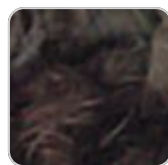
Group 2. Elegant 100% acrylic fabric, with a soft terry, pleasant to the touch and a unique color combination.

## SUANCES

Ref. 54600CO



garnet 10307 suances



black 10315 suances



clay 10306 suances



anthracite 10314  
suances



mustard 10305  
suances

# VONDOM



gray 10313 suances



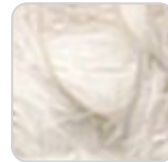
blue 10312 suances



camel 10304 suances



ocean 10311 suances



cream 10303 suances



green 10310 suances



tortora 10302 suances



ecru 10301 suances



olive 10317 suances



jade 10309 suances



white 10300 suances



brown 10308 suances



peach 10316 suances

Group 2. Bocol fabric, which stands out for its warmth and softness, with matching colors that add depth and elegance.

## RIBADEO

Ref. 54600CO



mustard 10325  
ribadeo



gray 10333 ribadeo



camel 10324 ribadeo



blue 10332 ribadeo



cream 10323 ribadeo



ocean 10331 ribadeo



tortora 10322 ribadeo



green 10330 ribadeo



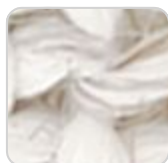
ecru 10321 ribadeo



mint 10337 ribadeo



jade 10329 ribadeo



white 10320 ribadeo



olive 10336 ribadeo



brown 10328 ribadeo



peach 10335 ribadeo

# VONDOM



garnet 10327 ribadeo



anthracite 10334  
ribadeo



clay 10326 ribadeo

Group 2. Soft fabric with marbled yarns of different thicknesses that create a rich and visually interesting texture. Its Linen look adds a touch of natural style.

## LOURO

Ref. 54600CO



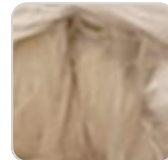
anthracite 10354 louro



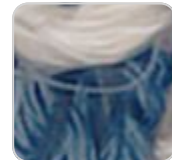
mustard 10345 louro



gray 10353 louro



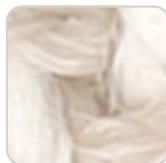
camel 10344 louro



blue 10352 louro



ocean 10351 louro



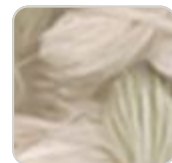
cream 10343 louro



green 10350 louro



tortora 10342 louro



jade 10349 louro



brown 10348 louro



olive 10356 louro



garnet 10347 louro



peach 10355 louro



clay 10346 louro

Group 2. Soft and versatile fabric, which presents a neutral base color that makes it easy to combine with different colors and fabrics.

## ALTEA

Ref. 54600CO

# VONDOM



tortora 1102 altea



white 1100 altea



ecru 1111 altea



cream 1103 altea



camel 1120 altea



clay 1122 altea



garnet 1106 altea



brown 1104 altea



jade 1125 altea



ocean 1123 altea



blue 1114 altea



gray 1101 altea



anthracite 1124 altea



black 1105 altea

Group 1A. Soft outdoor fabric with leather-like texture.

## AROUSA

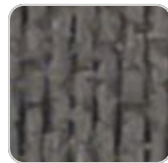
Ref. 54600CO



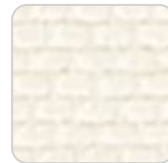
ecru 1221 arousa



white 1219 arousa



tortora 1209 arousa



cream 1220 arousa



camel 1230 arousa



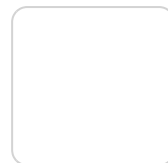
clay 1231 arousa



garnet 1223 arousa



brown 1214 arousa



jade 1235 arousa



blue 1222 arousa



gray 1208 arousa



anthracite 1210  
arousa

Group 1B. Soft outdoor fabric with shiny finish.

