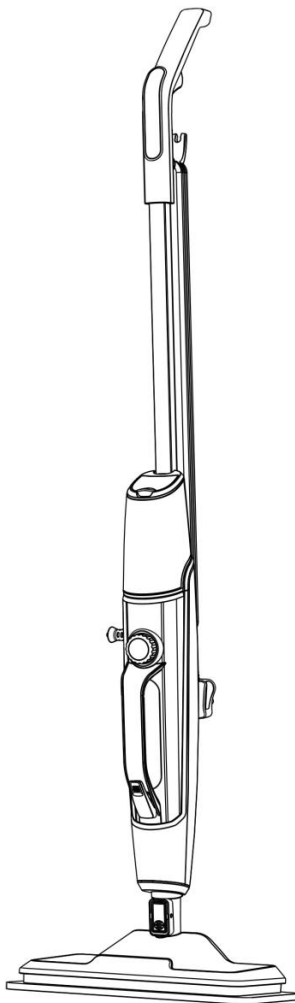




**Operating Manual**

**MULTIFUNCTIONAL STEAM  
MOP**

**RHMSM6001**



# GUARANTEE

At Russell Hobbs, we take all our customer feedback seriously.

Feel free to contact our Customer Services Team who will be more than happy to assist you.

This product is guaranteed for 12 months from the date of the original purchase. If any defect arises due to faulty materials or workmanship, the faulty product must be returned to the place of purchase.

Refund or replacement is at the discretion of the retailer.

The following conditions apply:

- The product must be returned to the retailer with the original proof of purchase.
- The product must be installed and used in accordance with the instructions contained in this instruction guide and any other instructions for use which are supplied.
- It must be used for domestic purposes only and for its intended use.
- This guarantee does not cover wear and tear, damage, misuse or consumable parts.
- This does not affect your statutory rights.

Region	Contact	Website
UK & Northern Ireland	0345 209 7461	mda.russellhobbs.com
Ireland	1 800 938982	ie.mda.russellhobbs.com
Rest of Europe	europe@productcaregroup.com	de.mda.russellhobbs.com fr.mda.russellhobbs.com es.mda.russellhobbs.com it.mda.russellhobbs.com nl.mda.russellhobbs.com

Note your serial number below for future reference



Image for illustration purposes only

## IMPORTANT SAFETY INSTRUCTIONS

- It is hazardous for anyone other than a competent person to carry out any service or repair operation that involves the removal of a cover which gives protection against exposure to electrical parts.
- Do not remove parts from the appliance such as screws.
- If the supply cord is damaged, it must be replaced by the manufacturer, its service agent or similarly qualified persons in order to avoid a hazard. Do not use with damaged cord or plug.
- This product is intended for household use only. Do not use outdoors.
- This appliance can be used by children aged from 8 years and above and persons with reduced physical, sensory or mental capabilities or lack of experience and knowledge if they have been given supervision or instruction concerning use of the appliance in a safe way and understand the hazards involved. Children **do** not play with the appliance. Cleaning and user maintenance should not be made by children without supervision.
- Do not direct at people, animals, electrical outlets, or equipment containing electrical components.
- The use of accessory attachments, detergents or cleaning solutions not recommended by the appliance manufacturer may cause fire, electric shock, injury or damage. Use only those as recommended by the manufacturer.
- Descale the product monthly using 50% white vinegar & 50% water solution.

## IMPORTANT SAFETY INSTRUCTIONS

- The appliance has to be unplugged after use and before carrying out user maintenance on the appliance.
- The appliance has not been left unattended while it is connected to the supply mains.
- The filling aperture has not been opened during use.
- Keep the appliance out of reach of children when it is energized or cooling down.
- Do not use this appliance to pick up water or any other liquids, combustible substances or hot/burning objects.
- Only use the appliance when fully assembled.
- Do not dismantle during use.
- The liquid or steam must not be directed towards equipment containing electrical components, such as the interior of ovens.
- Ensure all outlets are clear when in operation. Do not use with any opening blocked.
- The appliance should not be used if dropped, if there is visible signs of damage or if it is leaking.
- Do not use in enclosed spaces filled with vapour, such as paint thinner, moth proofing substances, or any flammable or combustible vapours.
- Do not use on leather, wax polished floors, natural wood and/or unsealed floors, and any fabric not recommended for steam treating. If in doubt, consult the flooring manufacturer and test an inconspicuous area.
- Do not store with a wet pad attached.
- Do not immerse in water, such as for cleaning. Clean pads at least monthly.

## IMPORTANT SAFETY INSTRUCTIONS

- Distilled or demineralized water will maximise the performance of the mop.
- Quality testing during manufacture may result in water droplets remaining in the tank. This is normal.
- If you shake this product the water cut-off valve will make a rattling noise. This is normal and is not a defect.

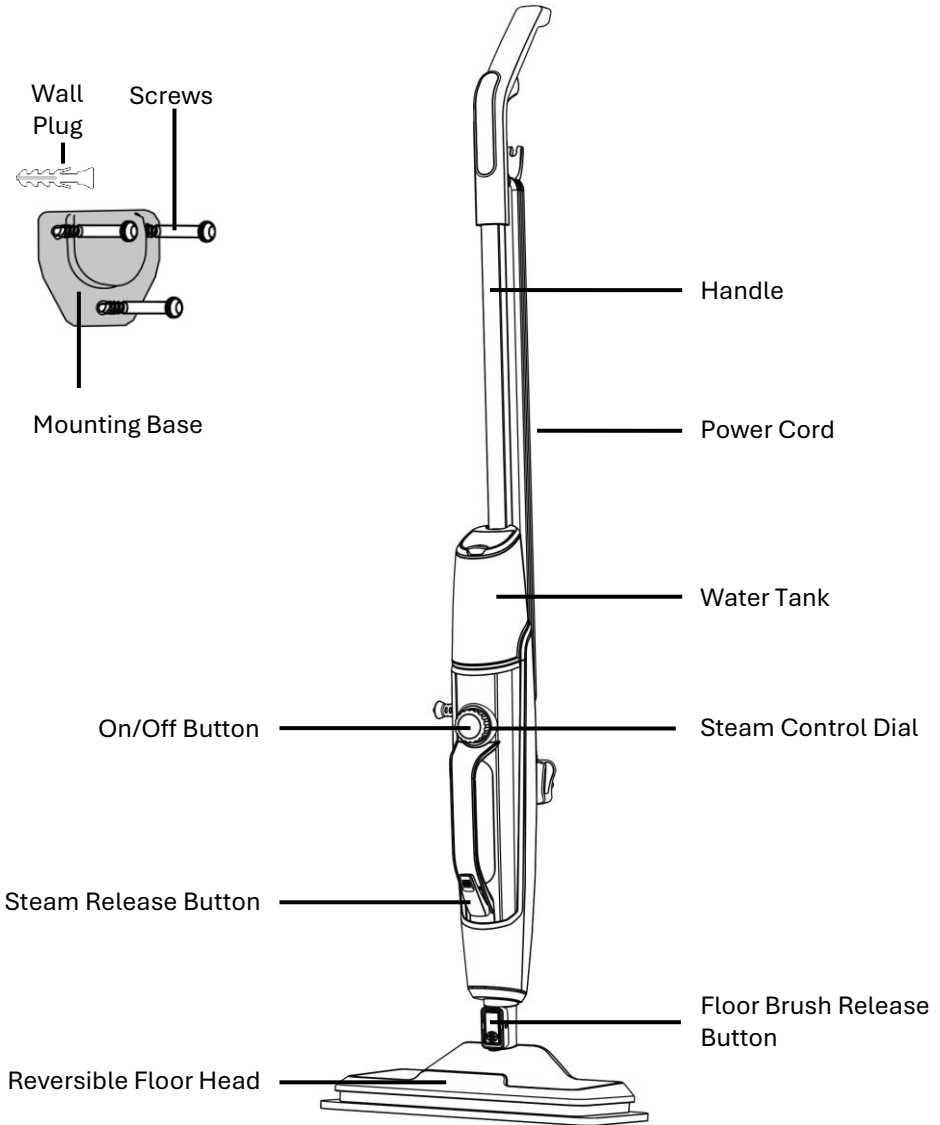
**Important:** Please ensure the power cable is wrapped loosely on the cable holders. Wrapping the power cord too tightly can cause damage.

### WARNING- THIS APPLIANCE MUST BE EARTHED

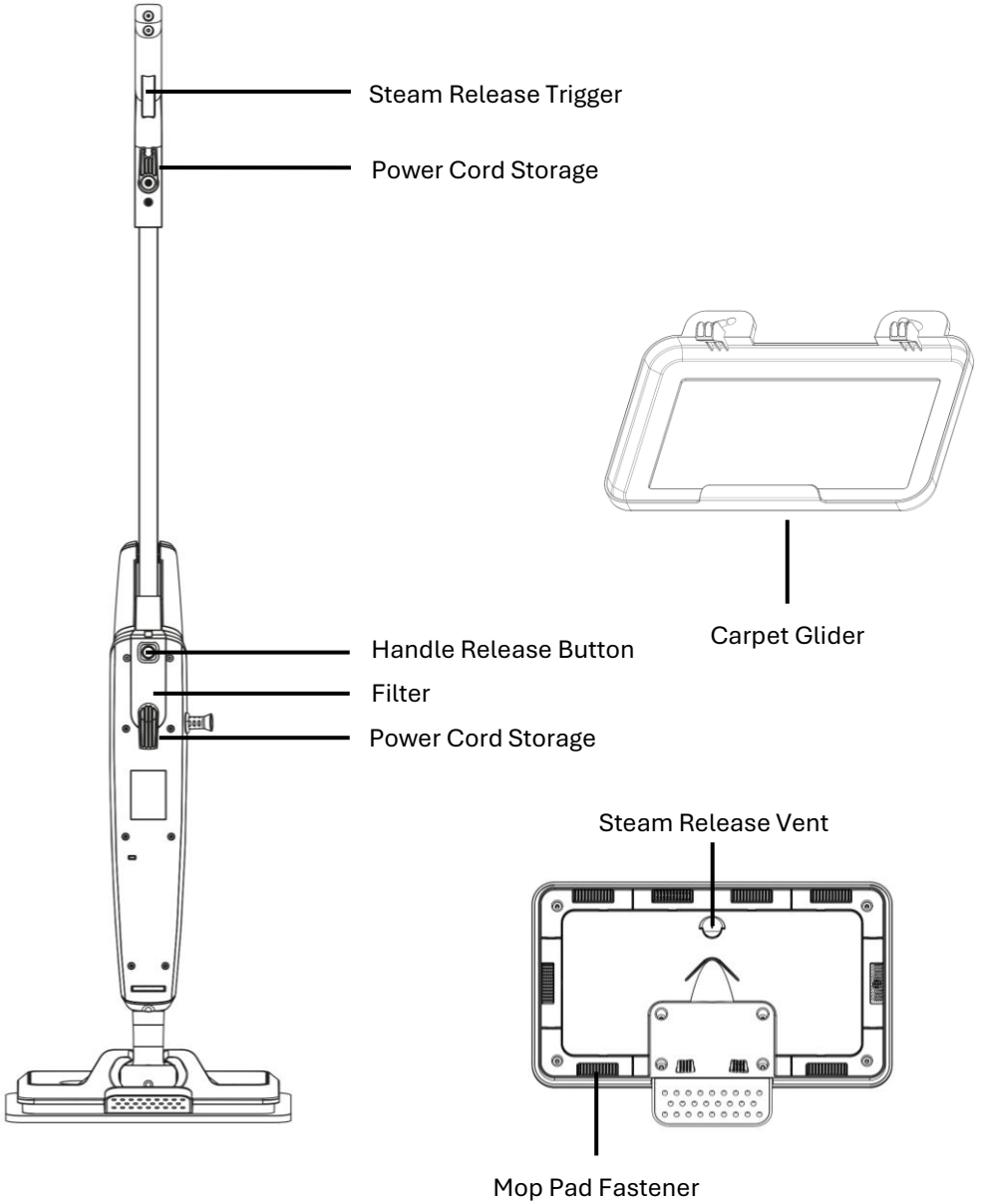
This appliance is designed to operate from a mains supply of 220-240V~ 50/60Hz. Check that the voltage marked on the product corresponds with your supply voltage.

This product is fitted with a **10A** fuse complying with BS1363. If this plug is unsuitable, damaged or needs to be replaced, contact customer services.

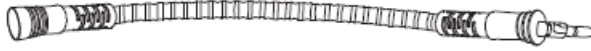
# PRODUCT OVERVIEW



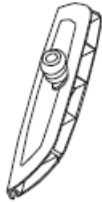
# PRODUCT OVERVIEW



# PRODUCT OVERVIEW



Flexible Hose



Window Cleaning Tool



Straight Nozzle



Grout Tool



Large Round Brush



Angled Nozzle



Small Round Brush



Wire Round Brush



Scraper Tool



Mop Pad

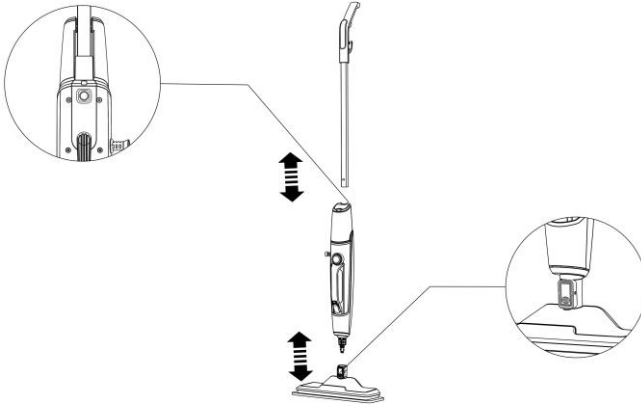


Window Cleaning Cloth

# ASSEMBLY

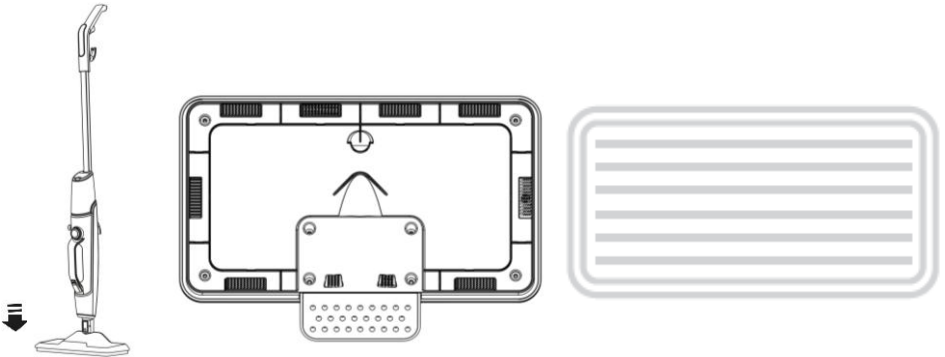
## Installation of Main Body

Insert the handle and floorhead into the corresponding position of the main body until a click is heard. To disassemble, press the 'Handle Release Button' and the 'Floor Brush Release Button'



## Installation of Mop Pads

Attach the mop pad to the floor head, ensuring the loop and hook fasteners are aligned.

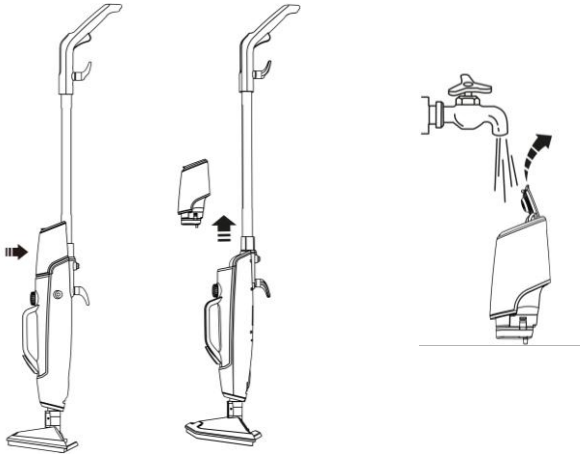


Note: The floor head may scratch floor surface if the unit is operated without the mop pad attached. Always return the unit to the wall mount once after operation.

## ASSEMBLY

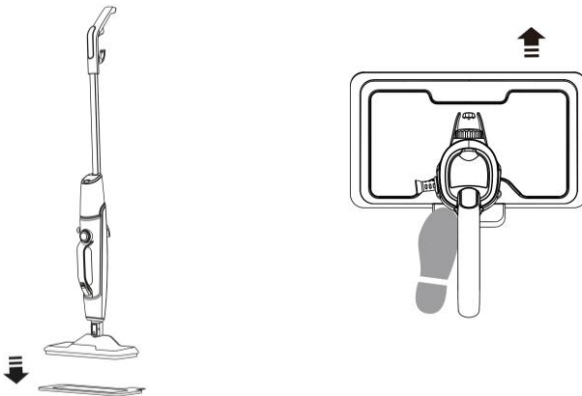
### Installation of Water Tank

1. Remove the water tank from the main unit by lifting the tank in an upwards direction.
2. Lift the cap and add water up to the max fill line.
3. Replace the water tank into the main unit. A click will signal the installation is complete.



### Installation of Carpet Glider

Place the carpet glider on the ground and lower the steam mop to click into place. To detach the carpet glider, step on the rear of the glider and lift the steam mop upwards.



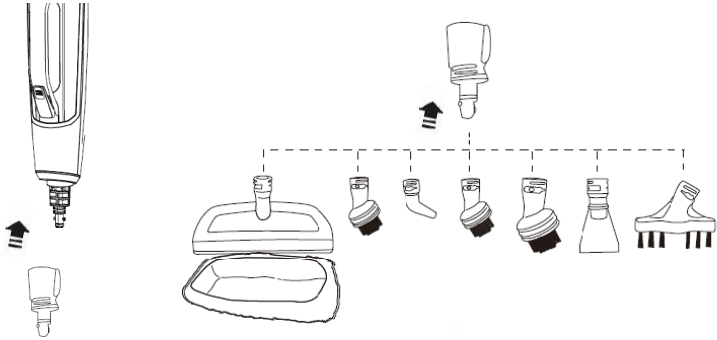
# ASSEMBLY

## Installation of Additional Cleaning Accessories

Attach the accessory adaptor into the main unit.

Attach the desired accessory to the accessory adaptor, turning the accessory to secure the position.

To activate the steam function, press the 'Steam Release Button'.



### **Flexible Hose**

To increase the reach of the cleaning accessories



### **Window Cleaning Tool**

To clean glass surfaces



### **Window Cleaning Cloth**

Attach to window cleaning tool



### **Nozzles**

For target steam cleaning



### **Grout Tool**

To clean between tiles



### **Brushes**

To clean tough stains



### **Scraper Tool**

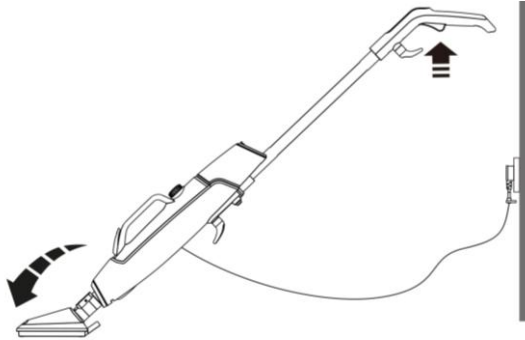
To remove built up dirt

Note: Always patch test a small area to ensure the steam cleaner does not damage any surfaces before cleaning.

## OPERATION GUIDE

### Using the Steam Cleaner

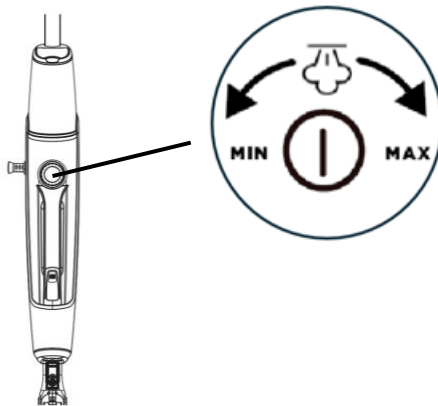
1. Plug in the power cord.
2. Press the power button, the indicator light will illuminate red to indicate the mop is preheating. When the light turns green, the mop is ready to use.
3. Long press the steam release trigger on the handle to release steam.



Note: Use of detergent or shampoo is not recommended for this unit. Use clean water only.

### Controlling Steam Flow

Use the Steam Control Dial to adjust the steam output from the multifunctional steam mop to the desired setting



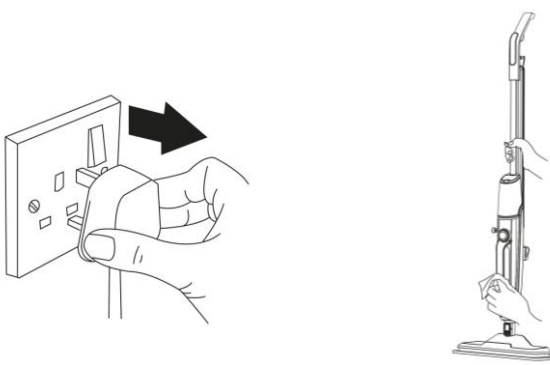
## CARE AND MAINTINENCE

### **Storing the Steam Mop**

Unplug the multifunctional steam mop and wrap the power cord around the power cord storage hooks.

Always remove the mop pad after cleaning has been completed.

Wipe down the unit with a damp cloth to clean.

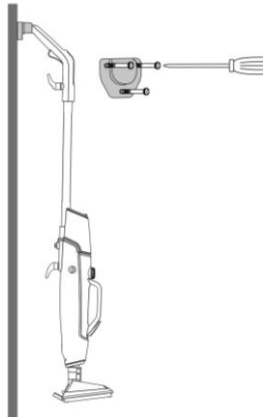


Note: Ensure the power cable is wrapped loosely on the storage hooks. Wrapping the power cord too tightly can cause damage.

### **Wall Mounting**

Drill 3 holes in the appropriate positions to appropriate position and press wall plugs flush with the wall.

Use a screwdriver to attached the steam mop mounting base to the wall. The mounting base should be fixed at the same height as the steam mop handle to allow the mop to be stored upright.



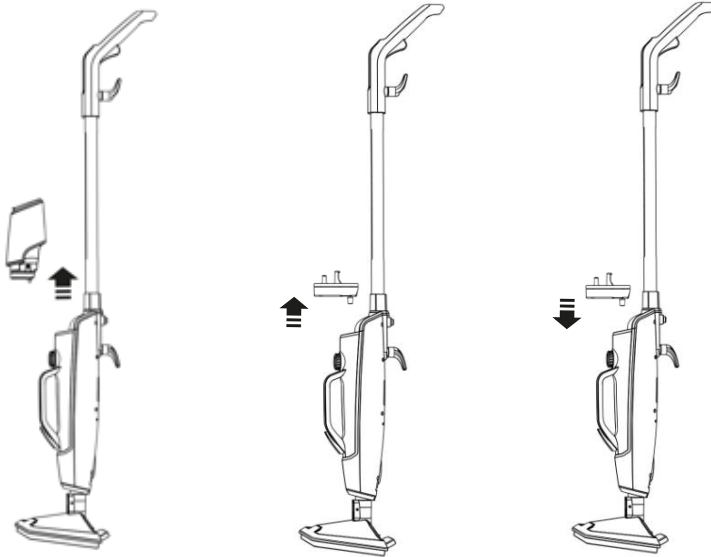
## CARE AND MAINTINENCE

### **Replacing the filter**

To prevent water hardness and blockages caused by limescale build up, it is recommended to replace the water filter every 6 months.

To replace the filter remove the water tank from the main unit and then remove the filter.

Insert the replacement filter and push down until a click is heard to confirm this has been fitted securely.



Note: Replacement filters can be purchased direct from Russell Hobbs and selected retailers.

Replacement filter code: RHMSM6001-SP-02

### **Washing the mop pads**

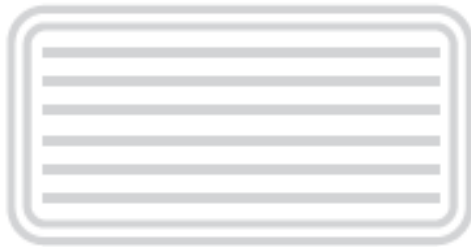
The mop pad is machine washable up to 40°C. Allow to air dry complete before re-using. Do not iron the mop pad.

## REPLACEMENT MOP PADS

Only use official Russell Hobbs microfibre mop pads with this appliance.

Replacement pads can be purchased direct from Russell Hobbs and selected retailers.

Replacement pad code: RHMSM6001-SP-01



## WARNING

Symbol IEC 60417-5597 (2002-10) is used on the unit to indicate that this unit operates with hot water vapour (steam). To avoid scalding and burns take extra care when in use



**WARNING:** Danger of scalding

## PROBLEM SOLVING

Reduced steam/no steam is coming out	<ul style="list-style-type: none"><li>• Check the water tank is filled</li><li>• Check the steam dial is turned on at the front</li><li>• Check the appliance is plugged in correctly</li></ul>
The appliance smells	<ul style="list-style-type: none"><li>• Check the microfiber pad is clean</li><li>• Wash the microfiber pad in a washing machine or warm soapy water and allow to dry naturally</li><li>• If first time use, new parts heating may cause a smell but this will dissipate quickly</li></ul>
A puddle has formed/the floor is soaking wet	<ul style="list-style-type: none"><li>• The mop pad is saturated</li><li>• Wash the mop pad and allow to dry naturally, or replace with a new pad</li><li>• If still too much water, contact customer services</li></ul>
Parts have broken	<ul style="list-style-type: none"><li>• Contact customer services</li></ul>
The mop pads aren't cleaning in the washing machine	<ul style="list-style-type: none"><li>• Pads need replacing</li><li>• Visit your local retailer, or contact customer services to purchase additional pads</li></ul>
The steam mop has cut out	<ul style="list-style-type: none"><li>• Allow the steam mop to cool for 1 hour. Clean all filters and dust containers before trying to use again.</li></ul>

## ENERGY CONSUMPTION

### Product information for power consumption and maximum time to reach applicable low power mode

Off mode	Power Consumption (Off Mode)	0.3W
	Setting and the maximum time needed to reach the applicable low power condition	At once after the switch was turned off
Standby mode	Power Consumption (Standby)	Not applicable
	Setting and the maximum time needed to reach the applicable low power condition	The appliance does not incorporate a standby mode

## TECHNICAL SPECIFICATION

<b>Model Number</b>	RHMSM6001
<b>Rated Voltage and Frequency</b>	AC 220-240V 50-60Hz
<b>Net Capacity Clean Water</b>	0.35 litres
<b>Rated Power Input</b>	1500W
<b>Dimensions</b>	(H) 110 x (W)27 x (D)26 cm

## NOTES

# NOTES



# Russell Hobbs

Made by Product Care Trading Limited under license from Spectrum Brands (UK) Limited. Product Care Trading Ltd, Unit 1, Green Bank Business Park, Swan Lane, Hindley Green, Wigan, WN2 4AY, United Kingdom / Product Care (Ireland) Ltd, Unit 3D North Point House, North Point Business Park, New Mallow Road, Cork, T23 AT2P, Ireland. Russell Hobbs is the registered trademark of Spectrum Brands (UK) Ltd.

UK  
CA



The 'wheellie bin' symbol is known as the 'Crossed-out wheellie bin Symbol'. When this symbol is marked on a product/batteries, it means that the product/batteries should not be disposed of with your general household waste. Only discard electrical/electronic/battery items in separate collection schemes, which cater for the recovery and recycling of materials contained within. Your co-operation is vital to ensure the success of these schemes and for the protection of the environment. For your nearest disposal facility, visit [www.recycle-more.co.uk](http://www.recycle-more.co.uk) or ask in store for details.

SEDEX – Connecting businesses and their global suppliers to share ethical data and enabling improvement in ethical performance. Visit [www.sedex.org.uk](http://www.sedex.org.uk) for further information.

We reserve the right, due to possible changes to design, to alter the instruction manual without prior notice.