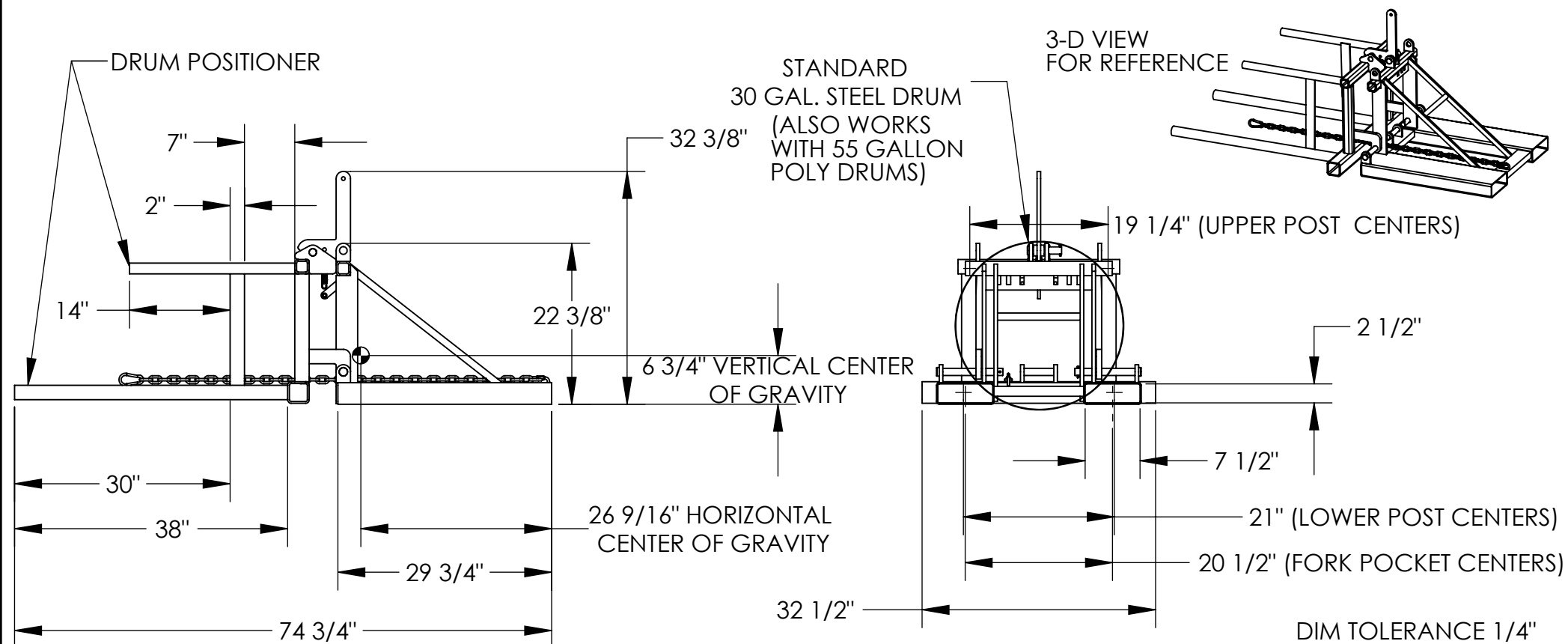


DRUM POSITIONER - DRUM-P-30

APPROX WEIGHT: 289.48 lbs.
DOES NOT INCLUDE WEIGHT OF POWER OR PACKAGING!!!

*** ANY ADDITIONS, DELETIONS, OR OMISSIONS MUST BE CORRECTED ON THIS DRAWING AS THIS DRAWING WILL BE CONSIDERED ALL INCLUSIVE ***

ALL GRAPHICS PROVIDED ARE FOR REFERENCE ONLY. IF CERTAIN DIMENSIONS ARE CRITICAL PLEASE VERIFY THOSE DIMENSIONS WITH YOUR SALESPERSON



STANDARD FEATURES

MODEL NUMBER IS DRUM-P-30
CAPACITY IS 800 LBS.

OVERALL WIDTH IS 32 1/2"

OVERALL LENGTH IS 74 3/4"

USABLE LENGTH IS 38"

OVERALL HEIGHT IS 32 3/8"

USABLE FORK POCKETS ARE 7 1/2" W X 2 1/2" H

FORK POCKETS ARE ON 20 1/2" CENTERS

LOST LOAD IS 292 LBS. (APPROX)

EFFECTIVE THICKNESS IS FORK LENGTH MINUS 29 3/4"

FRAME:

TOUGH BAKED IN POWDER COAT BLUE FINISH

POSITIONER & LATCH HANDLE:

TOUGH BAKED IN POWDER COAT YELLOW FINISH

SPECIAL FEATURES

NONE

NEVER EXCEED LOAD CENTER RATING PER
FORK TRUCK MANUFACTURER'S GUIDELINES.
DO NOT USE THIS FORK TRUCK ATTACHMENT
IF LOAD WILL EXCEED FORK TRUCK
MANUFACTURER'S LOAD CENTER RATING.

FOR INTERNAL USE ONLY
PROJECT SIGN OFF

SALES	
ENG.	
FAB.	
POWER	

APPROVAL

I, THE UNDERSIGNED, AGREE THAT THE PRODUCT AS
REPRESENTED SATISFIES DESIGN AND DIMENSION
REQUIREMENTS. I ALSO ACKNOWLEDGE MY DUTY TO
CONFIRM PRODUCT AND INSTALLATION
COMPLIANCE WITH ALL APPLICABLE FEDERAL, STATE
AND LOCAL REGULATIONS AND STANDARDS.

ANY MODIFIED UNITS ARE NON-RETURNABLE

[] As drawn [] As marked

Signed: _____ Date: _____

Printed Name: _____

LEAD TIME WILL START UPON RECEIPT OF SIGNED APPROVAL DRAWING

DISTRIBUTOR'S NAME:

VESTIL MANUFACTURING

DRAWN BY: NHD

DATE: 12/17/2007

REFERENCE: X

SCALE: 1:20

QUOTED LEAD TIME: X

QUOTE #
X

P.O.# X

W.O.# X

SALES: X

FILE NAME:

09-007-075