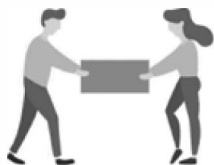


Thank you for your purchase!

We hope you enjoy this new addition to your home for many years to come.

Our commitment to providing quality products does not simply end when you purchase our product. We fully stand behind our products from start to finish.



2 - People
Recommended

ASSEMBLY RATING



EASY ————— DIFFICULT

The Assembly Rating is a 5-point system showing the level of effort needed to assemble a specific product.



CHECK BEFORE STARTING



Are you missing anything?

Double-check all parts, hardware and accessories listed are all accounted for.



Check out our Quick Tips!

We recommend reviewing the pre-assembly handouts. Even experts need a refresher now and then!



Should we send any replacements?

Are there any irregularities or flaws in the parts? We can send replacements!



Prep Time!

Please review the assembly instructions and all diagrams prior to assembling.

PRE ASSEMBLY INTRODUCTION

We understand building ready-to-assemble furniture can be a challenging experience for some. To help avoid confusion, we have provided some helpful tips that may speed up the process.



Teamwork

ALWAYS have at least two people to help with transporting and assembling the product to avoid potential injury and/or damage.



Suitable Location

Assembling near the area of the intended location is highly recommended.



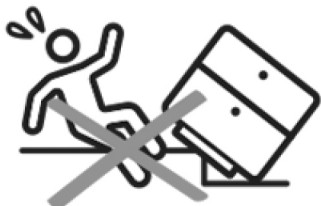
Sufficient Space

Make sure you have enough space to move around during the assembly.



Avoid Scratches

Use cardboard, blankets or a carpeted area while assembling furniture to prevent to prevent scratches and damages.



Flat Surface

Make sure the furniture rests on a flat and level surface with each leg evenly touching the floor.

IT IS THE USER'S RESPONSIBILITY TO MAINTAIN THE FURNITURE. THE HARDWARE MAY LOOSEN OVER TIME AND MAY CAUSE THE FURNITURE TO BE WOBBLY AND UNABLE TO SUPPORT ITS INTENDED WEIGHT CAPACITY. THIS MAY LEAD TO COLLAPSE AND MAY CAUSE SERIOUS INJURY.

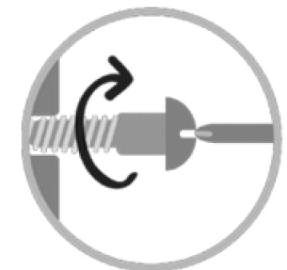
ASSEMBLY AND CARE ADVICE



FAILURE TO FOLLOW THE GUIDELINES BELOW MAY RESULT IN INJURY AND/OR PROPERTY DAMAGE.



Position each part correctly and insert screws or bolts into their respective holes.



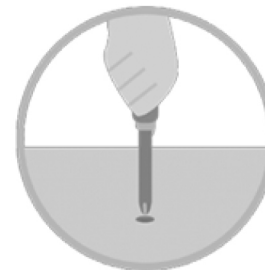
Turn clockwise to tighten and only tighten when step is completed or when instructed to do so.



Use the appropriate hand tools or power tools for assembly. Select steps, such as tightening screws and/or bolts, may require hand tools to avoid causing damage during assembly.

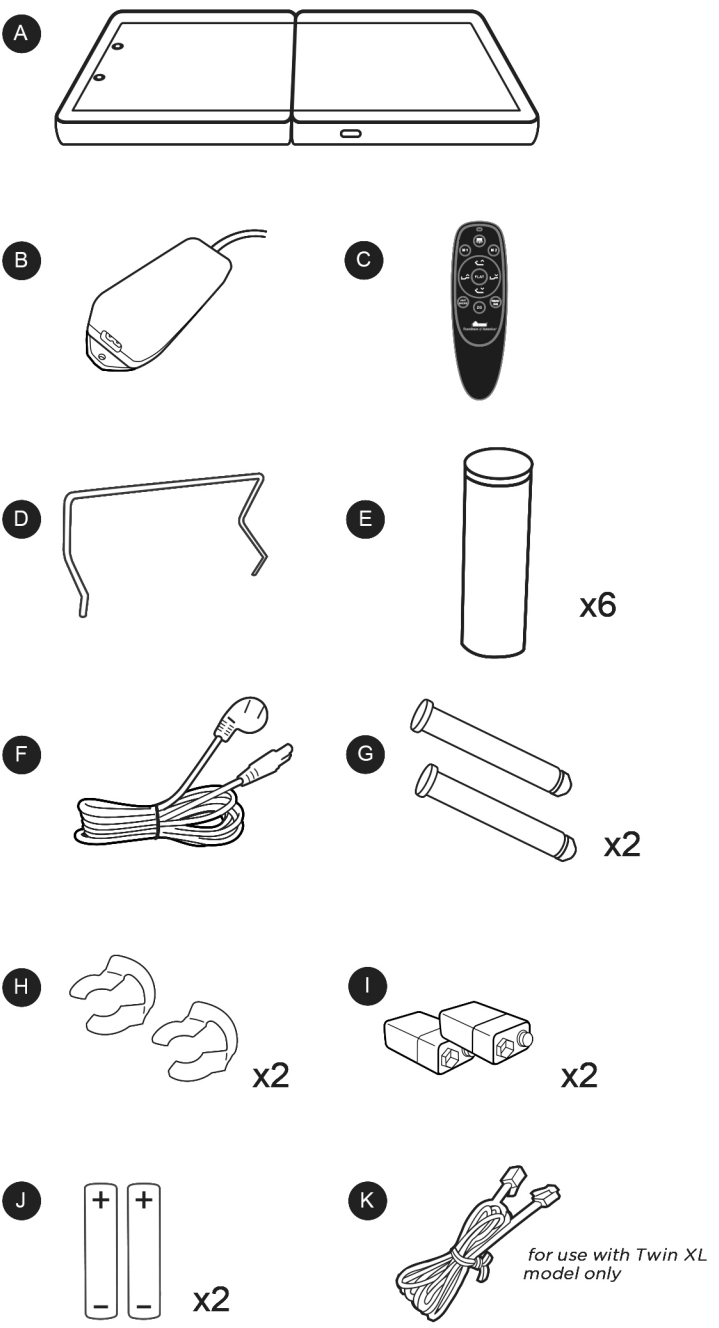


Save the instructions and store any supplied tools for later maintenance.



After two weeks, check and tighten any loose hardware and repeat again every six months thereafter.

PARTS LIST



ASSEMBLY INSTRUCTIONS

KEEP HANDS/FINGERS AWAY FROM HINGE PINCH POINT
LAY THE BASE FLAT BEFORE UNFOLDING THE BASE.

STEP 1:
Repeat on both sides of the base:

STEP 2:
Repeat on both sides of the base:

IMPORTANT !
ALL 6 LEGS MUST BE SECURELY TIGHTENED TO BASE BEFORE TURNING BASE OVER FOR USE.

WARNING
DO NOT TILT OR LEAN BASE ON LEGS WHEN TURNING BASE OVER.
TO PREVENT DAMAGE TO THE USB PORT, DO NOT REST BED ON THE SIDE.

STEP 3:

STEP 4:

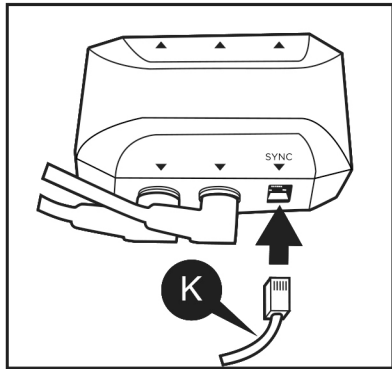
STEP 5:

STEP 6:

STEP 7:

SYNCHRONIZING 2 BASES TO 1 REMOTE

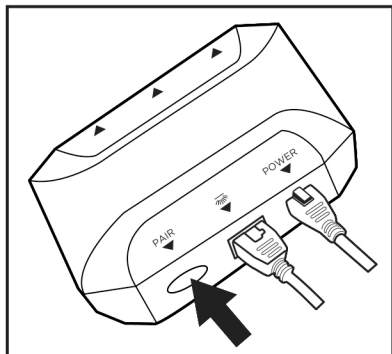
If SYNCING 2 bases (Twin XL) together, please follow the instruction below:



WITH BOTH BASES IN FLAT POSITION, CONNECT EACH BASE TO THE OTHER ONE BY INSERTING THE SYNC CABLE INTO EACH OF THE BASE'S CONTROL BOX SLOT THAT LABELED AS "SYNC".

PAIRING THE REMOTE CONTROL

SYNCHRONIZING 2 BASES TO ONE REMOTE PAIRING THE REMOTE CONTROL REMOTE CONTROL FUNCTIONS

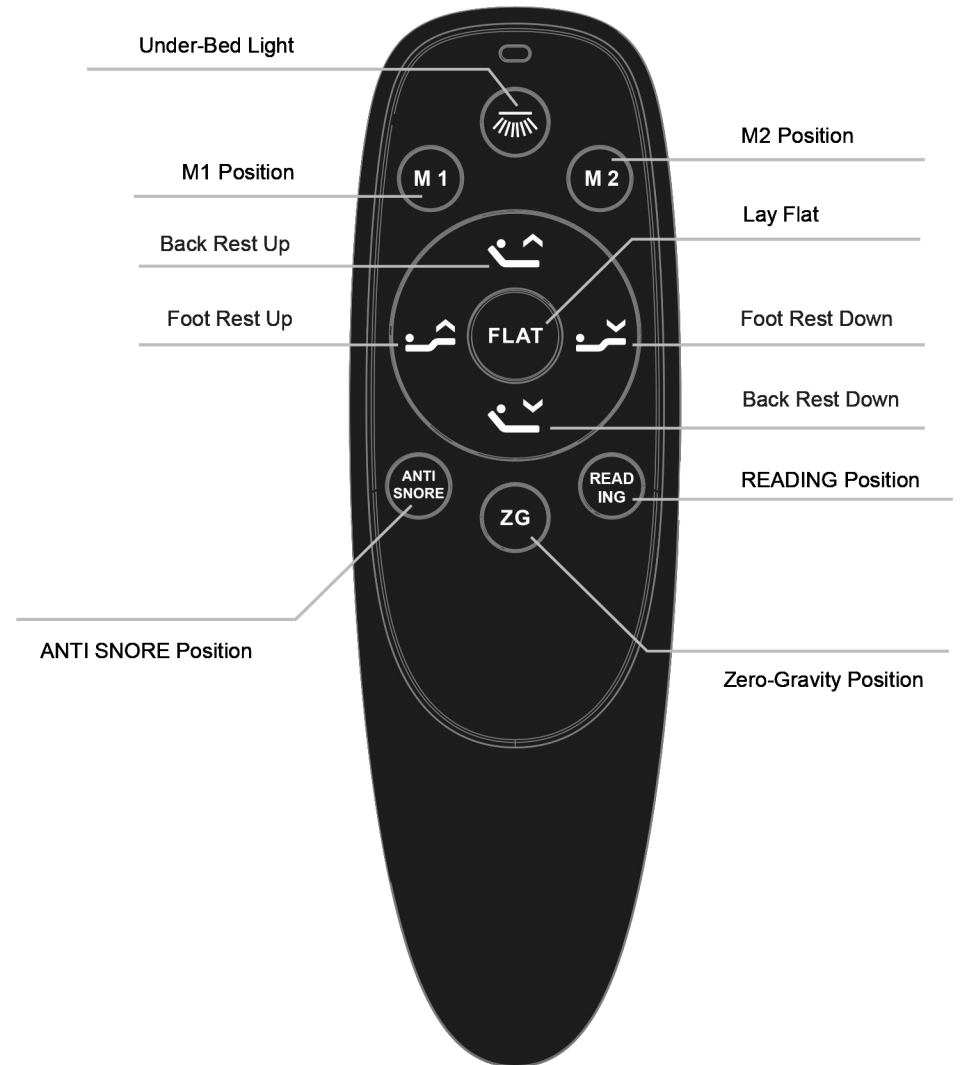


DOUBLE CLICK THE PAIR BUTTON ON THE CONTROL BOX (LIGHT WILL TURN BLUE DURING THE PAIRING PROCESS).



SIMULTANEOUSLY PRESS AND HOLD THE HEAD UP AND HEAD DOWN BUTTONS ON REMOTE UNTIL THE REMOTE BACK LIGHTS FLASH AND STAY LIT, THEN RELEASE REOTE BUTTONS.

REMOTE CONTROL OVERVIEW



REMOTE CONTROL FUNCTIONS

Buttons	Key value	Specification
B1	UNDER BED LIGHT	Click B1,turn on/off the under bed light
B2	M1	Click B2,the bed moves to M1 Position
B3	M2	Click B3,the bed moves to M2 Position
B6	FLAT	Click B6, the bed will be flat
B9	ANTI SNORE	Click B9,the bed moves to ANTI SNORE position
B10	ZG	Click B10, the bed moves to zeroG position
B11	READING	Click B11,the bed moves to READING position
Factory Reset	ZG+FLAT	Press and hold ZG + FLAT for 5s ,until the indicator light of remote flashes , memory positions of control box will be reset to default settings
Set New Memory Position (except Flat)	Press and hold the corresponding momory button for 5s	Move bed to your favourite position, press and hold the corresponding momory button for 5s, until the indicator light of remote flashes , the remote sets the current position as a new momery position
Other functions	Any Button	During the automatic movement of bed (Click memory position buttons or flat button, bed moves to memory position or flat position), press any button , the bed movement will stop

