

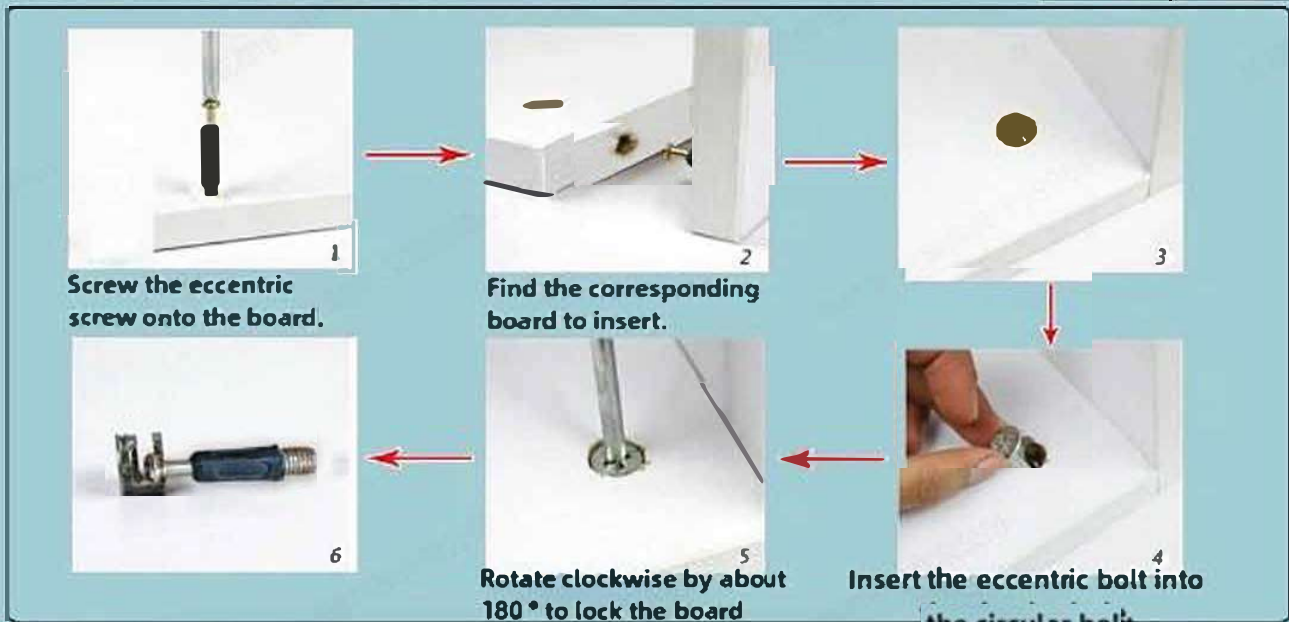
File cabinet with a draw and a door 40 CM installation diagram

										
Eccentric Screws	Eccentric Bolts	3.5CM Self-tapping Screws	Handles	Handles Screws	Iron Sheets	Lock Kit	Minimum Self-tapping Screws	Metal Pins	Small Nails	Wheels with Locks
A*8	B*8	C*12	D*2	E*4	F*2	G*2	H*28	I*3	J*20	K*2

Warm Tips: During installation, please tighten the screws in medium well extent, and then tighten them when all finished!

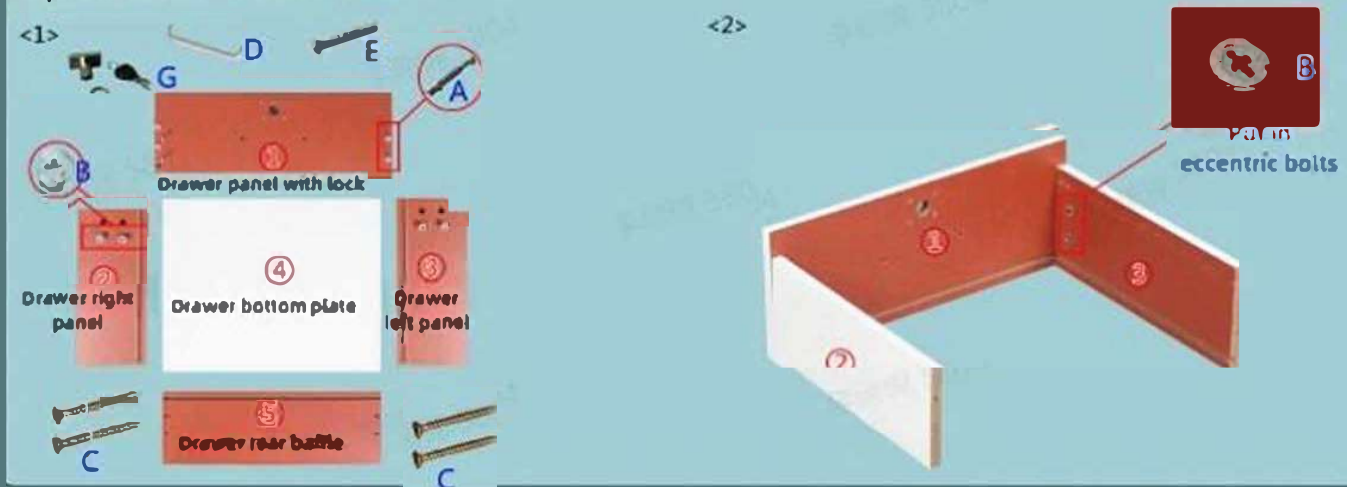
	
Wheels	Spring Pin
L*2	M*1

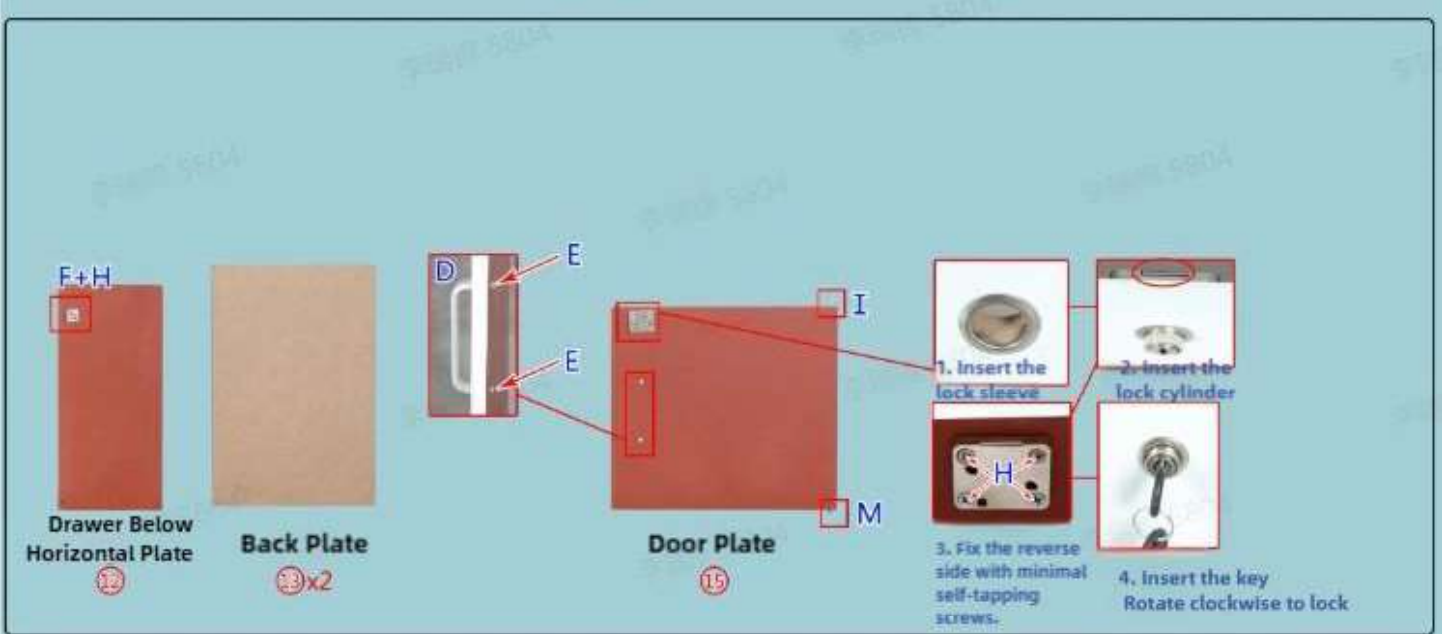
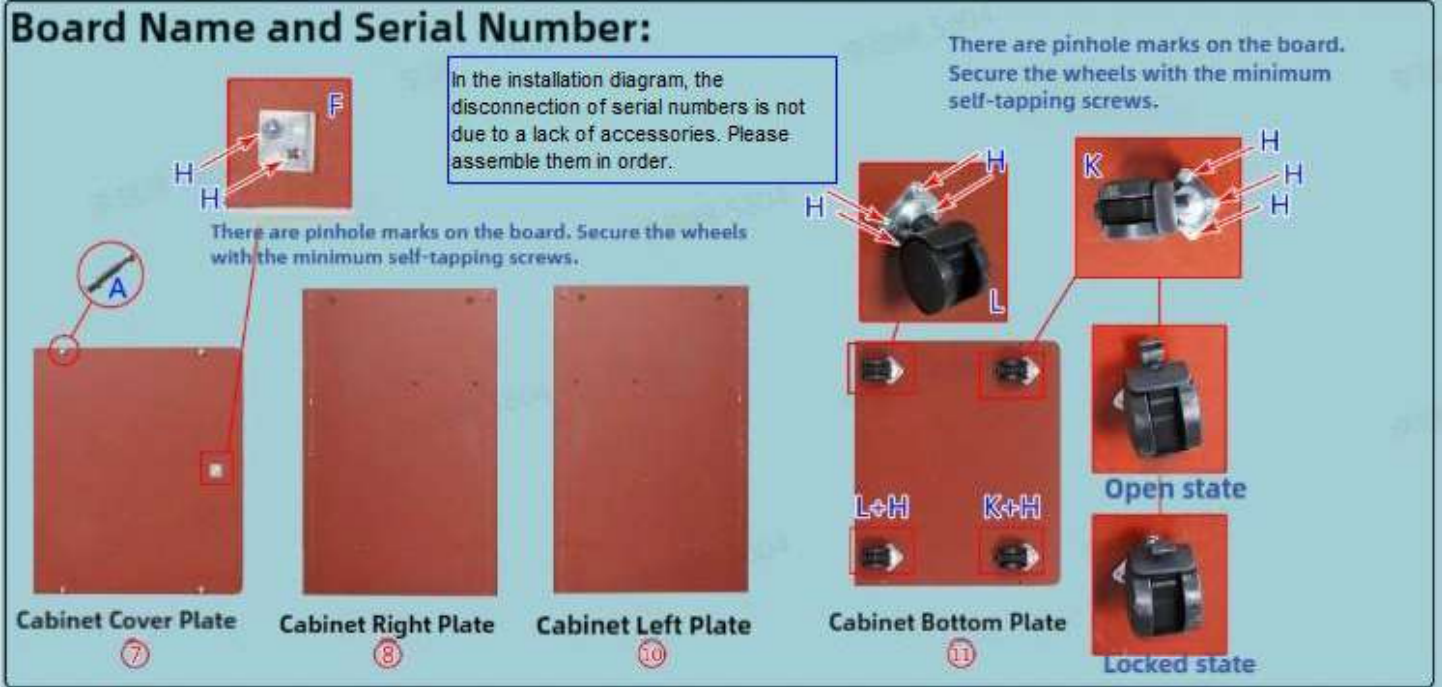
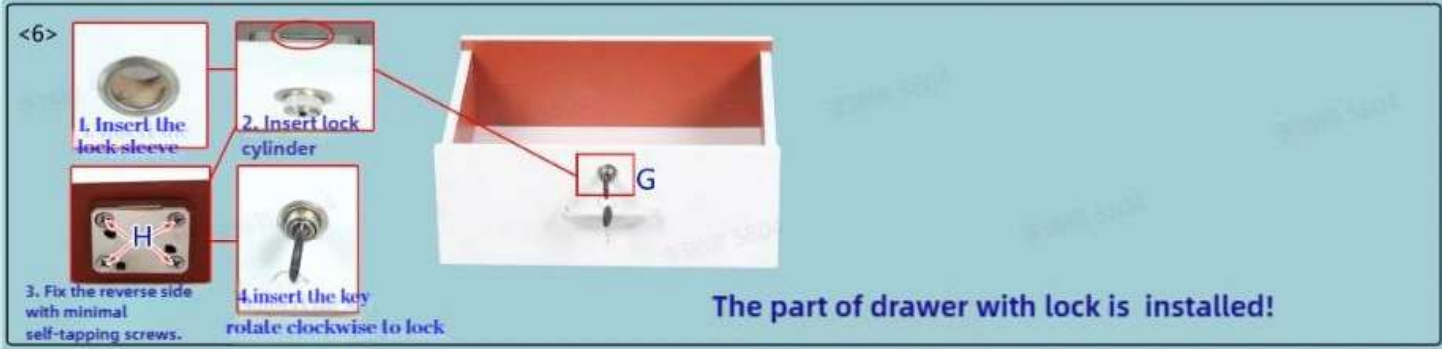
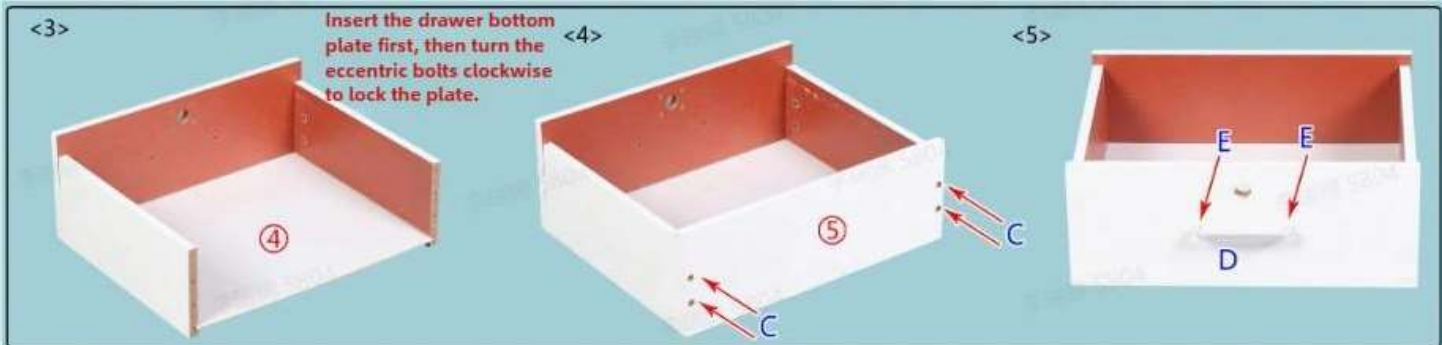
Installation Principle of Eccentric Component:



Installation Steps

Step 1: Drawer Section Installation





Step 2: Integral Part Installation

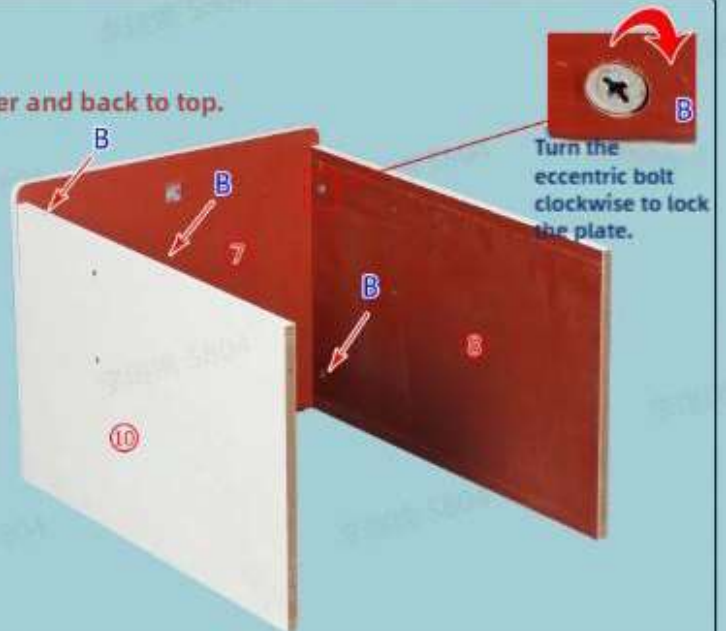
<1>

The holes are in pairs opposite each other and back to top.

The door stop is placed up and facing forward.



Cabinet Cover Plate Cabinet Right Plate Cabinet Left Plate

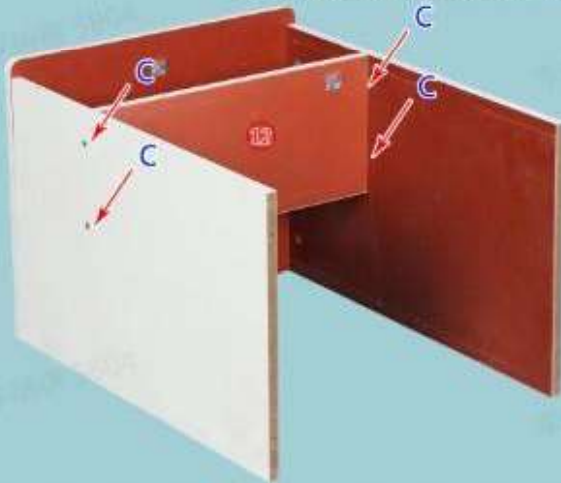


<2>

The small hole and door stop are placed up and facing forward.



Drawer Below Horizontal Plate

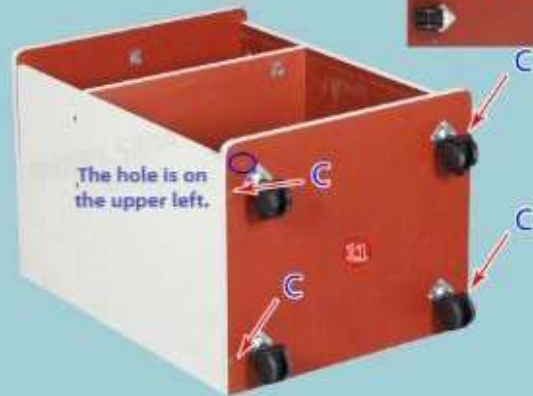


<3>

The arcs face upward.

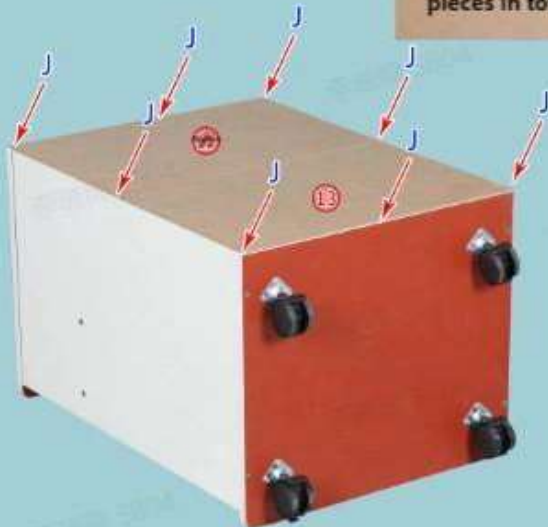


Cabinet Bottom Plate



<4> Flip to the back

Back Plate (two pieces in total)



<5>



Door Plate



1. Insert the metal pin on the door plate at the bottom of the board.



2. Press and hold the spring pin, then align it with the hole in the plate.



<6> Straighten the whole product and slowly push the drawer in

Method 1: After pushing the drawer, insert the metal pin.

Method 2: After inserting the metal pin, push the drawer in at a 45° angle.



Insert metal pins
The function of metal pins is to prevent the drawer from falling out when pulling out.

<7> The installation is completed



The Finished Drawing!