

P8061 Series

5" LED New Construction and Remodel • Wet Location



Specifications:

Description:

The P8061 is ideal for use in both new construction as well as remodel/retrofit. Light output is comparable to that of a typical 65W incandescent downlight, providing up to 75% energy savings. The P8061 is equipped with both Edison base adaptor and quick link connector allowing easy installation in many standard incandescent recessed housings.

Construction:

- Diffused polycarbonate lens controls direct glare from the LEDs
- Easy "Push and Twist" installation with (3) friction spring clips
- Can be installed in most competitors 5" recessed housings
- Dimmable to 10% with many electronic low voltage dimmers
- Suitable for use in IC or NON-IC Applications with 25°C (77°F) continuous room side ambient temperature.
- Provided with quick link for use with E26 Edison Base adapter

Performance:

Input Power	13W
Input Voltage	120V
Input Frequency	60Hz
Lumens/LPW	661/51 (LM-79)
CCT	3000K
CRI	90+
Life	60,000 (L70/TM-21)
EMI/RFI	FCC Title 47, Part 15, Class B
Min. Start Temp	-30° C
Max. Operating Temp	30° C
Warranty	5 yrs.
Labels	cCSAus classified for wet locations ENERGY STAR® qualified (-28 white only)

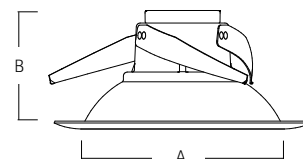
P8061-28/30K9-AC1-L06

Images:

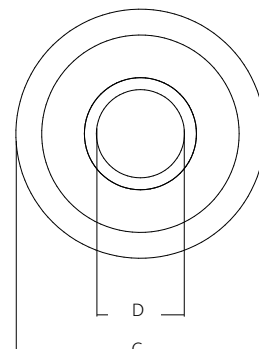


Dimensions:

A	B
4.5"	4"



C	D
6.2"	2.75"



Catalog number:

Base	Finish	Color Temp	CRI	Voltage	Lumen Package
P8061	20 - Bronze 28 - White 31 - Black 82 - Metallic Gray	30K - 3000K	9 - 90+	AC1 - 120V	L06 - 661 Lumens

Photometrics:

P8061-28/30K9-AC1-L06

ELECTRICAL DATA P8061-28/30K9-AC1-L06

Input Voltage	120V
Input Frequency	50-60 Hz
Input Current	0.11A
Input Power	12.8W
Power Factor	>0.90
THD	<20%
EMI Filtering	FCC 47CFR Part 15, Class B
Operating Temperature	-30°C to 60°C
Dimming	Yes*
Over-voltage, over-current, short-circuit protected	

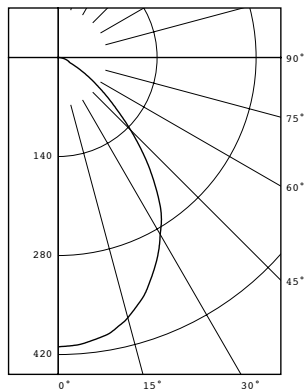
* See Dimming Notes for more information

PERFORMANCE DATA CHART

Single Unit, Initial Footcandles, 30° Work Plane							Ceiling to Floor Height (ft)	Multiple Units, Initial Footcandles, 30° Work Plane				
Nadir		10°		20°		30°		Spacing is Maximum Over Work Plane, SMH = 1				
FC	FC	Dia (ft)	FC	Dia (ft)	FC	Dia (ft)		Fixture Spacing (ft)	RCR 2	RCR 5	RCR 7	
33	31	1	24	3	15	4	6	4.0	44	33	28	
14	13	2	10	4	6	6	8	6.0	18	13	11	
6	6	3	5	6	3	9	10.5	9.0	8	6	5	
5	4	3	3	7	2	11	12	10.0	6	4	4	

P8061-28/30K9-AC1-L07

LED Light Engine: 3000K 90 CRI
System Wattage: 12.8
Fixture delivered lumens: 661
Fixture Efficacy: 51.6
Spacing Criteria: 1.0



CANDELA DISTRIBUTION

DEG	CANDELA
0	409
5	406
15	381
25	325
35	250
45	145
55	65
65	22
75	12
85	4
90	0

Test No. 15.01694

Tested at 25°C Ambient in accordance to IESNA LM-79-2008

Tested in P84-AT housing

ZONAL LUMEN SUMMARY

ZONE	LUMENS	%LUMINAIRE
0-30	295	44.5%
0-40	449	67.9%
0-60	620	93.8%
0-90	661	100.0%

COEFFICIENTS OF UTILIZATION

Zonal Cavity Method

Room Cavity Ratio	% Effective Ceiling Cavity Reflectance									
	80%		70%		50%		30%			
	20% Effective Floor Cavity Reflectance									
	% Wall Reflectance									
	70	50	30	10	70	10	50	10	50	10
1	112	108	105	102	109	100	102	97	98	94
3	97	88	82	77	95	76	84	75	82	74
5	84	74	66	61	82	60	71	60	69	59
7	74	62	55	49	72	49	60	49	59	49
9	65	53	46	41	64	41	52	41	51	41

P8061-28/30K9-AC1-L07

Test No. 15.01694

Dimming Notes:

P8061-28/30K9-AC1-L06

P8061 is designed to be compatible with many Electronic Low Voltage (ELV-Reverse Phase) controls. LED rated dimmer controls may offer favorable dimming performance. The following is a partial list of known compatible dimmer controls:

Electronic Low Voltage ELV Reverse Phase Controls

Leviton	Renoir II	AWRMG-EAW
Lutron	Diva Series	(Part Number DVELV-300)
Lutron	Maestro Series	(Part Number MAELV-600)
Lutron	Nova T Series	(Part Number NTELV-300)
Lutron	Spacer Series	(Part Number SPSELV-600)
Lutron	Vierti Series	(Part Number VTELV-600)

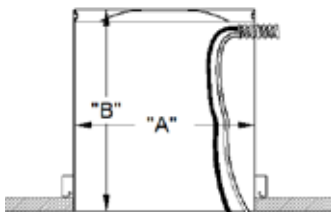
Incandescent Digital type dimmers are not recommended.

Dimming capabilities will vary depending on the dimmer control, load, and circuit installation. Always refer to dimmer manufacturer instructions or a controls specialist for specific requirements.

Dimmer control brand names where identified above are trade names or registered trademarks of each respective company.

Compatibility of 5" Recessed Housings:

The P8061's are cCSAus classified for use with Progress and most competitive recessed cans (with "A" and "B" dimensions) including:



"A" = 5 5/16 MIN. 6 6/8 MAX
"B" = 3 3/4 MIN.

NOTES

1. Operation in ambient temperatures higher than those specified will shorten life.
2. Warranty is limited to repair and replacement of defective parts of the LED system and does not include labor or installation. Contact Technical Support for details.