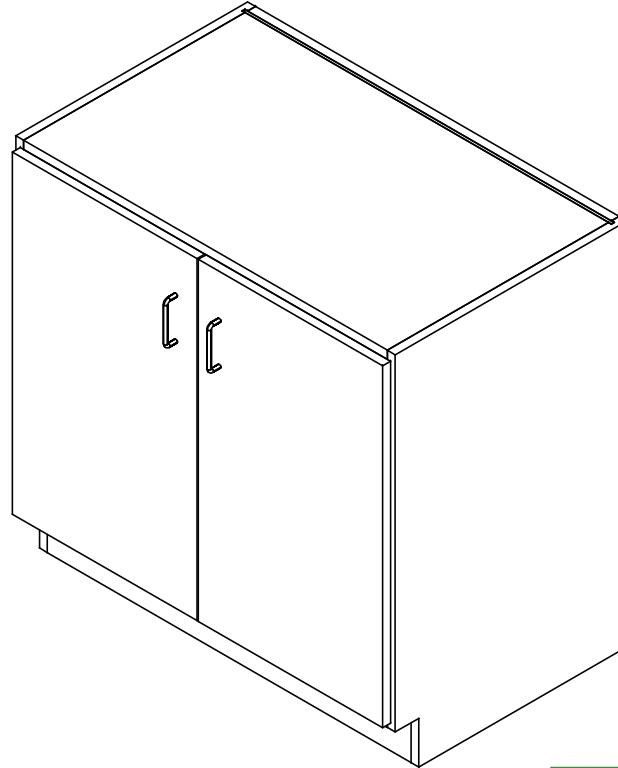


BASE CABINETS

ALL STANDARD BASE CABINETS - 0 SERIES (29"H), 1 SERIES (32.50"H), & 5 SERIES (35"H)
ASSEMBLY INSTRUCTIONS



NOTE:

1. MODEL VIEWS MAY NOT REPRESENT EXACT MODEL PURCHASED

| | | | |
|---------|-----|-----------|--------|
| DWN BY: | EMK | DWN DATE: | 1/9/15 |
| APR BY: | | DATE APR: | |
| APR BY: | | DATE APR: | |

UNLESS OTHERWISE SPECIFIED
DIMENSION ARE IN INCHES
CABINET SQUARENESS ± .0625
FRACTIONAL VALUES ± 1/32"
- ALL VALUES ± OVERALL -



300 South Krueger Street
Suring, WI 54174
diversifiedwoodcrafts.com

TITLE:
ALL STANDARD BASE CABINETS
ASSEMBLY INSTRUCTIONS

| REV. | DESCRIPTION | DATE | NAME | ECN NO. |
|----------------|-------------------------------|--------|------|---------|
| A | CREATED ASSEMBLY INSTRUCTIONS | 1/9/15 | EMK | - |
| REVISION LEVEL | | | | |

THIS DRAWING IS THE SOLE PROPERTY OF
DIVERSIFIED WOOD CRAFTS. IT MAY NOT
BE ALTERED OR CHANGED WITHOUT
PERMISSION

| | | | |
|-----------------|--------|--------|-----------|
| DRAWING NUMBER: | SCALE: | SHEET: | REVISION: |
| BASE CABINETS | NTS | 1 OF 6 | REV A |

TOOLS REQUIRED

| |
|-------------------|
| CONTACT CEMENT |
| SCREW DRIVER |
| SILICONE ADHESIVE |

ASSEMBLY COMPONENTS

| ITEMS INCLUDED | PART # | PART DESCRIPTION | QTY |
|-------------------------|--------|--------------------------------------------|--------|
| RUBBER BASE MOLDING | 100283 | RUBBER BASE MOLDING (SOLD BY FOOT) | VARIES |
| STAINLESS STEEL CORNERS | 100057 | CORNERS-STAINLESS STEEL,BASE | 2 |
| SHELF CLIPS | 100027 | SHELF CLIPS,PLASTIC,5MM PIN | VARIES |
| SCREWS - BASE | 100064 | SCREW,#6X $\frac{1}{2}$ PTH SMS SS SCREW | 8 |
| SCREWS - TOP | 100641 | SCREW,#8X1 $\frac{3}{4}$ " QUAD RD WASH HD | VARIES |

NOTE:

1. USE SCREWS IF YOU HAVE A PLAM, CHEMGUARD, OR MAPLE TOP.
2. USE SILICONE ADHESIVE IF YOU HAVE A PHENOLIC OR EPOXY TOP.
3. COMPONENTS VARY WITH STYLE OF BASE CABINET PURCHASED.

| | | | |
|---------|-----|-----------|--------|
| DWN BY: | EMK | DWN DATE: | 1/9/15 |
| APR BY: | | DATE APR: | |
| APR BY: | | DATE APR: | |

UNLESS OTHERWISE SPECIFIED
DIMENSION ARE IN INCHES
CABINET SQUARENESS ± .0625
FRACTIONAL VALUES ± 1/32"
- ALL VALUES ± OVERALL -



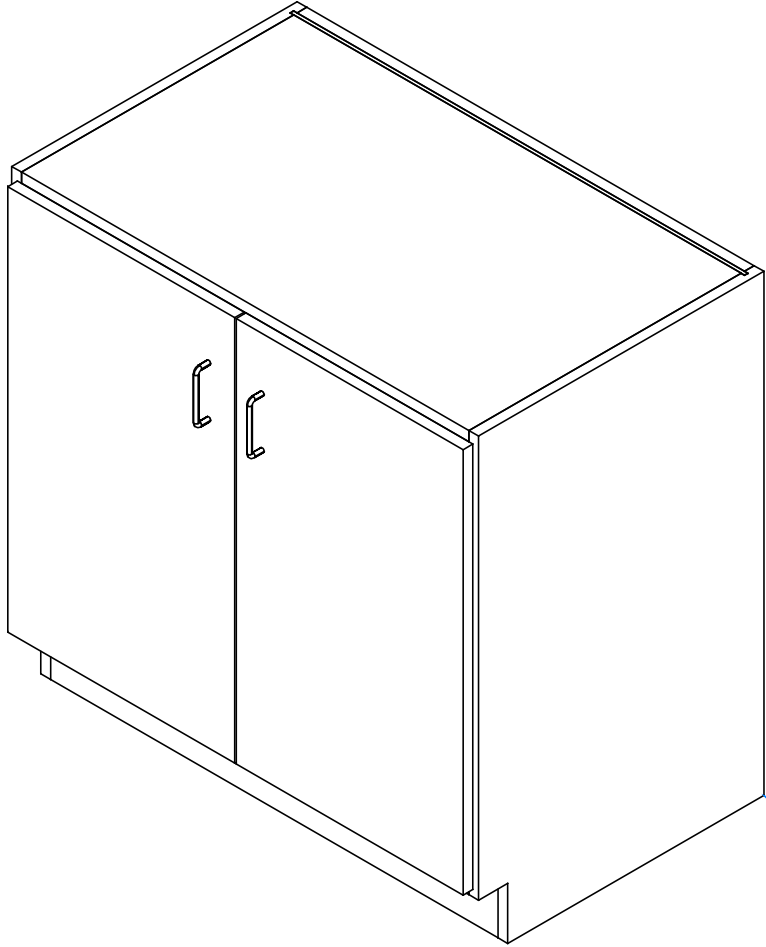
300 South Krueger Street
Suring, WI 54174
diversifiedwoodcrafts.com

TITLE:
ALL STANDARD BASE CABINETS
TOOLS AND ASSEMBLY COMPONENTS

| REV. | DESCRIPTION | DATE | NAME | ECN NO. |
|------|-------------------------------|--------|------|---------|
| A | CREATED ASSEMBLY INSTRUCTIONS | 1/9/15 | EMK | - |
| | | | | |

THIS DRAWING IS THE SOLE PROPERTY OF
DIVERSIFIED WOOD CRAFTS. IT MAY NOT
BE ALTERED OR CHANGED WITHOUT
PERMISSION

| | | | |
|-----------------|--------|--------|-----------|
| DRAWING NUMBER: | SCALE: | SHEET: | REVISION: |
| BASE CABINETS | NTS | 2 OF 6 | REV A |



STEP 1:

- POSITION CABINET IN YOUR DESIRED LOCATION.
- LEVEL CABINET.
- ANCHOR TO WALL.

****NOTE****
 CABINET MUST BE LEVELED OR
 DOORS AND DRAWERS MAY NOT
 OPEN OR CLOSE CORRECTLY

NOTE:

- 1.

| | | | |
|---------|-----|-----------|--------|
| DWN BY: | EMK | DWN DATE: | 1/9/15 |
| APR BY: | | DATE APR: | |
| APR BY: | | DATE APR: | |

UNLESS OTHERWISE SPECIFIED
 DIMENSION ARE IN INCHES
 CABINET SQUARENESS ± .0625
 FRACTIONAL VALUES ± 1/32"
 - ALL VALUES ± OVERALL -



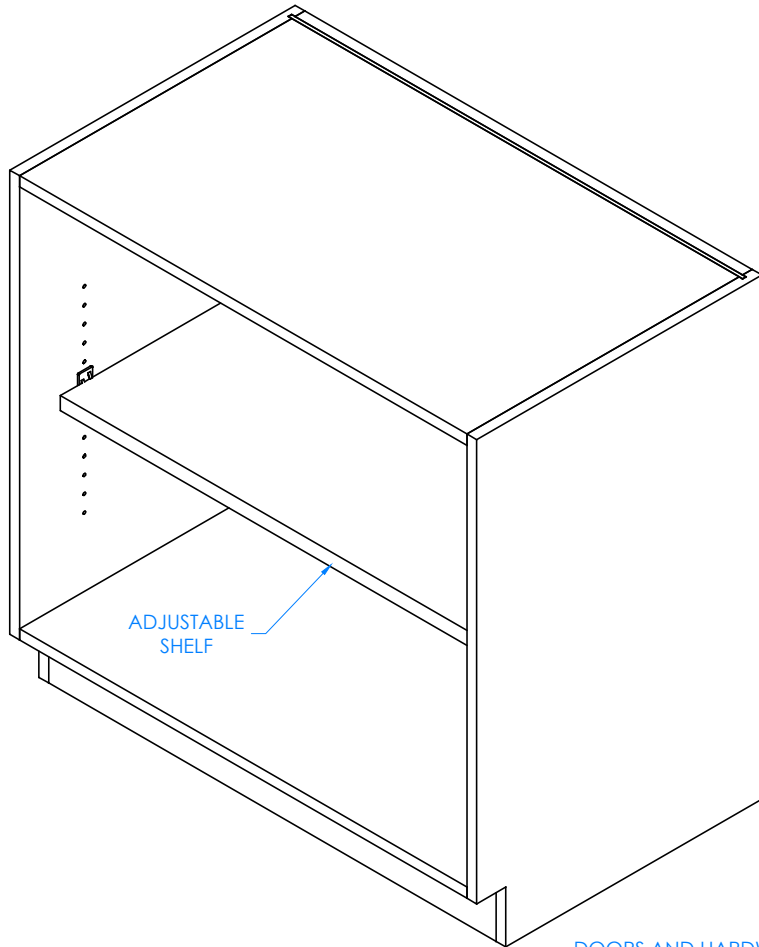
300 South Krueger Street
 Suring, WI 54174
 diversifiedwoodcrafts.com

TITLE:
**ALL STANDARD BASE CABINETS
 ASSEMBLY INSTRUCTIONS**

| REV. | DESCRIPTION | DATE | NAME | ECN NO. |
|----------------|-------------------------------|--------|------|---------|
| A | CREATED ASSEMBLY INSTRUCTIONS | 1/9/15 | EMK | - |
| REVISION LEVEL | | | | |

THIS DRAWING IS THE SOLE PROPERTY OF
 DIVERSIFIED WOOD CRAFTS. IT MAY NOT
 BE ALTERED OR CHANGED WITHOUT
 PERMISSION

| | | | |
|----------------------|--------|--------|-----------|
| DRAWING NUMBER: | SCALE: | SHEET: | REVISION: |
| BASE CABINETS | NTS | 3 OF 6 | REV A |



DOORS AND HARDWARE REMOVED TO SHOW CLARITY

STEP 2:

- IF YOU HAVE ADJUSTABLE SHELVES IN YOUR UNIT, INSERT SHELF CLIPS IN DESIRED LOCATION.
- PLACE SHELVES ON CLIPS, MAKING SURE THEY ARE LEVEL.

NOTE:

1.

| | | | |
|---------|-----|-----------|--------|
| DWN BY: | EMK | DWN DATE: | 1/9/15 |
| APR BY: | | DATE APR: | |
| APR BY: | | DATE APR: | |

UNLESS OTHERWISE SPECIFIED
DIMENSION ARE IN INCHES
CABINET SQUARENESS ± .0625
FRACTIONAL VALUES ± 1/32"
- ALL VALUES ± OVERALL -



300 South Krueger Street
Suring, WI 54174
diversifiedwoodcrafts.com

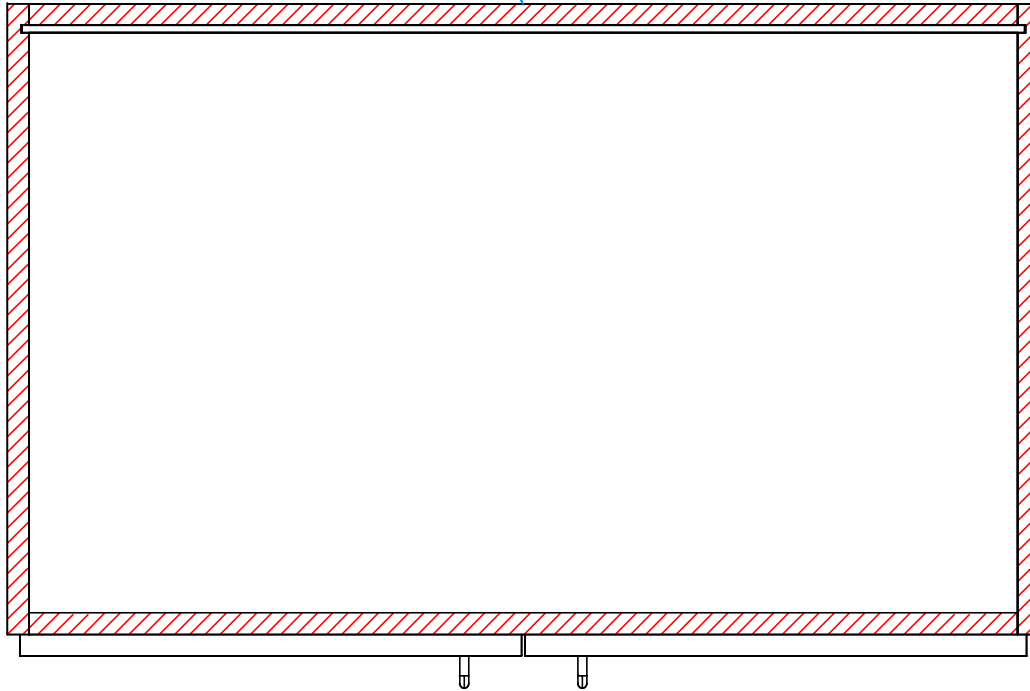
TITLE:
ALL STANDARD BASE CABINETS
ASSEMBLY INSTRUCTIONS

| REV. | DESCRIPTION | DATE | NAME | ECH NO. |
|----------------|-------------------------------|--------|------|---------|
| A | CREATED ASSEMBLY INSTRUCTIONS | 1/9/15 | EMK | - |
| REVISION LEVEL | | | | |

THIS DRAWING IS THE SOLE PROPERTY OF
DIVERSIFIED WOOD CRAFTS. IT MAY NOT
BE ALTERED OR CHANGED WITHOUT
PERMISSION

| | | | |
|-----------------|--------|--------|-----------|
| DRAWING NUMBER: | SCALE: | SHEET: | REVISION: |
| BASE CABINETS | NTS | 4 OF 6 | REV A |

APPLY SILICONE
ADHESIVE TO TOP
EDGES OF CABINET



TOP VIEW OF CABINET

STEP 3:

- IF YOU HAVE A PHENOLIC OR EPOXY TOP, APPLY SILICONE ADHESIVE TO TOP EDGES OF CABINETS.
- CENTER TOP ON UNIT.
- ALLOW TO CURE FOR 6-12 HOURS.
- IF YOU HAVE A PLAM, CHEMGUARD, OR MAPLE TOP, ATTACH TOP BY GOING INSIDE CABINET AND SCREWING UP THROUGH TOP WITH HARDWARE PROVIDED.

NOTE:

1.

| | | | |
|---------|-----|-----------|--------|
| DWN BY: | EMK | DWN DATE: | 1/9/15 |
| APR BY: | | DATE APR: | |
| APR BY: | | DATE APR: | |

UNLESS OTHERWISE SPECIFIED
DIMENSION ARE IN INCHES
CABINET SQUARENESS ± .0625
FRACTIONAL VALUES ± 1/32"
- ALL VALUES ± OVERALL -



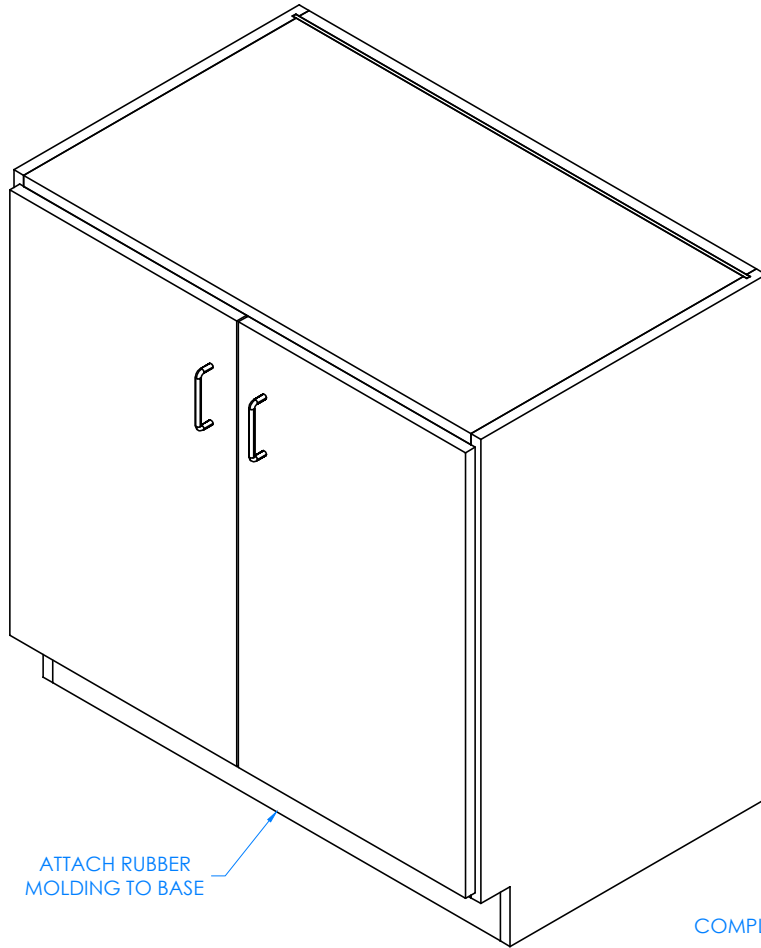
300 South Krueger Street
Suring, WI 54174
diversifiedwoodcrafts.com

TITLE:
ALL STANDARD BASE CABINETS
ASSEMBLY INSTRUCTIONS

| REV. | DESCRIPTION | DATE | NAME | ECN NO. |
|----------------|-------------------------------|--------|------|---------|
| A | CREATED ASSEMBLY INSTRUCTIONS | 1/9/15 | EMK | - |
| REVISION LEVEL | | | | |

THIS DRAWING IS THE SOLE PROPERTY OF
DIVERSIFIED WOOD CRAFTS. IT MAY NOT
BE ALTERED OR CHANGED WITHOUT
PERMISSION

| | | | |
|-----------------|--------|--------|-----------|
| DRAWING NUMBER: | SCALE: | SHEET: | REVISION: |
| BASE CABINETS | NTS | 5 OF 6 | REV A |



ATTACH RUBBER MOLDING TO BASE

COMPLETE UNIT SHOWN

STEP 4:

- ATTACH RUBBER MOLDING TO BASE USING CONTACT CEMENT.
- SCREW STAINLESS STEEL CORNER BRACKETS ON EACH CORNER OVER THE BASE MOLDING WITH HARDWARE PROVIDED.

NOTE:

1.

| | | | |
|---------|-----|-----------|--------|
| DWN BY: | EMK | DWN DATE: | 1/9/15 |
| APR BY: | | DATE APR: | |
| APR BY: | | DATE APR: | |

UNLESS OTHERWISE SPECIFIED DIMENSION ARE IN INCHES
 CABINET SQUARENESS ± .0625
 FRACTIONAL VALUES ± 1/32"
 - ALL VALUES ± OVERALL -



300 South Krueger Street
 Suring, WI 54174
 diversifiedwoodcrafts.com

TITLE:
**ALL STANDARD BASE CABINETS
 ASSEMBLY INSTRUCTIONS**

| REV. | DESCRIPTION | DATE | NAME | ECH NO. |
|----------------|-------------------------------|--------|------|---------|
| A | CREATED ASSEMBLY INSTRUCTIONS | 1/9/15 | EMK | - |
| REVISION LEVEL | | | | |

THIS DRAWING IS THE SOLE PROPERTY OF DIVERSIFIED WOOD CRAFTS. IT MAY NOT BE ALTERED OR CHANGED WITHOUT PERMISSION

| | | | |
|----------------------|--------|--------|-----------|
| DRAWING NUMBER: | SCALE: | SHEET: | REVISION: |
| BASE CABINETS | NTS | 6 OF 6 | REV A |