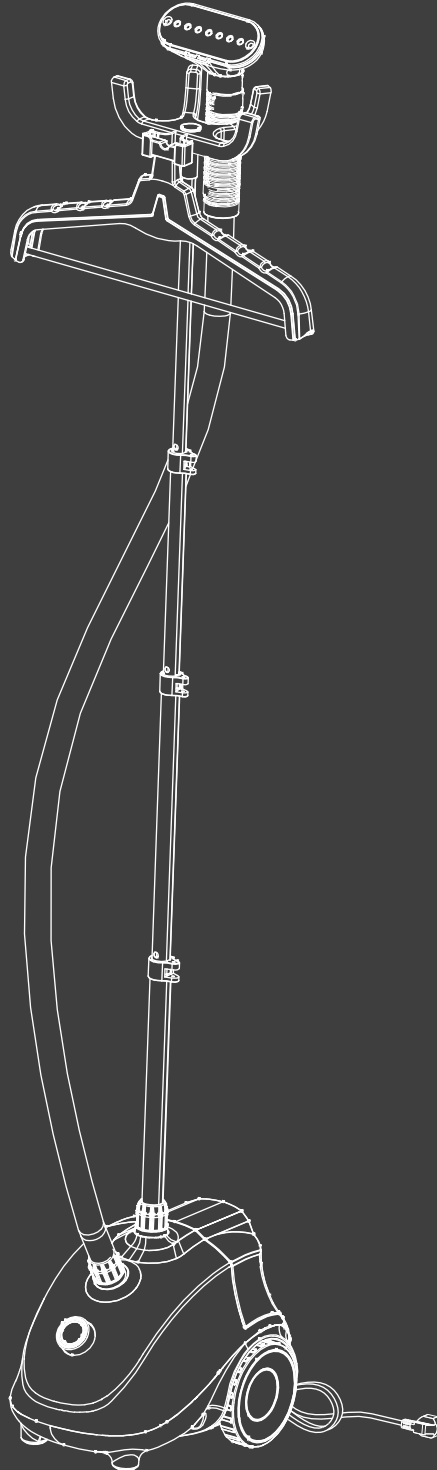


Garment steamer

Instruction Manual

EAM-GTJ-GS70



 EST 9:00AM--17:00PM

 HJ-Customer-Service@outlook.com

 (909)637-7665 | (909)637-7593

Important Safety Instructions:

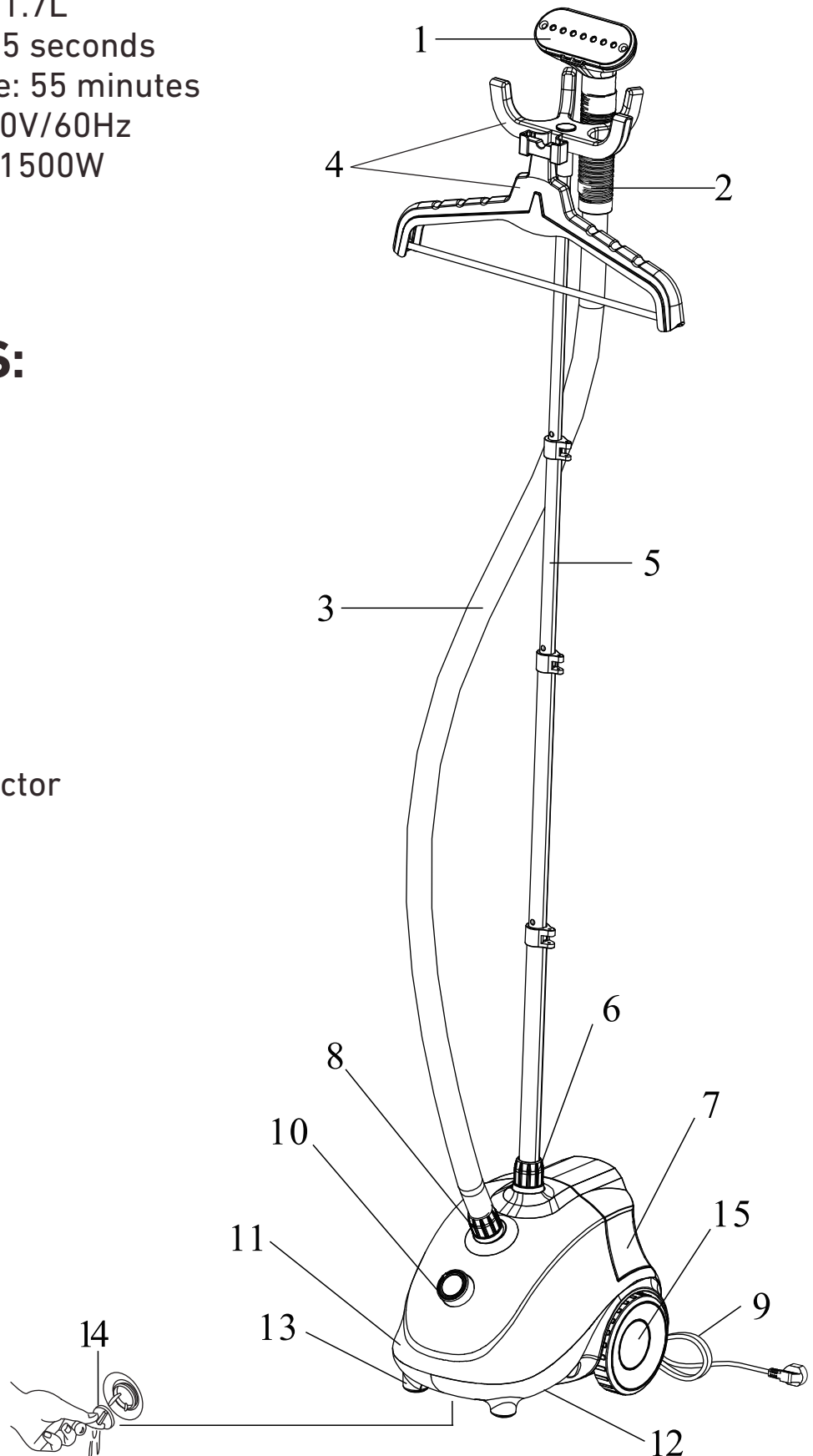
1. This appliance is designed only to be used by adult with full capacity for civil conduct. It is not intended for use by children or near children and other persons whose physical, sensory or mental capabilities or lack of experience and knowledge prevents them from using the appliance safely without supervision or instruction by a responsible person to ensure that they can use the appliance safely.
2. Only use accessories provided by the manufacturer. The use of accessory attachments other than those provided by the manufacturer may result in fire electric shock or irreversible damage to the appliance.
3. The voltage of your electrical source must correspond to that of the appliance (110-120v/60Hz). Connecting to the incorrect voltage may cause un-repairable damage to the appliance and will invalidate the warranty.
4. Do not fill the water tank with hot water or corrosive cleaning agents which could cause damage, Distilled or filtered water is strongly recommended.
5. Turn off, unplug and allow the appliance to cool completely for at least 30 minutes prior to draining the water tank and water reservoir and storing.
6. When in use, this appliance will spray hot steam from its steam nozzle. To avoid injury from hot steam, do not aim the steam nozzle at people or pets.
7. Be cautious about steam spraying out from the nozzle, Do not direct steam at people or animals, or use the machine while it damaged.
8. Steam only in a vertical motion. Never use steamer in horizontal position or tilt backwards, doing so may result in hot water discharge.
9. To reduce the risk of electric shock, do not immerse the appliance, plug, or power cord in water or other liquids.
10. Always keep the hose and nozzle elevated above the water tank. Never insert any object into any opening or hose.
11. Do not lay hose on the ground. Do not wind hose. Do not operate the appliance if the power cord is damaged.
12. Do not place the nozzle directly on any surface or appliance power cord while it is hot or plugged in.
13. Always turn off and unplug unit before refilling, draining, cleaning. moving, or when not in use.
14. Do not share the power supply with other high-powered electric appliance.
15. Do not cut or attempt to extend the steaming hose or power cord.
16. Keep the appliance away from flammable materials and chemicals.
17. Fill water before using and observe the water level during use.
18. Do not leave this appliance unattached while it is in operation.
19. For indoor use only.

PRODUCT SPECIFICATION:

Water Tank Capacity:1.7L
Steam Output Time:45 seconds
Sustainable Use Time: 55 minutes
Input Voltage:110-120V/60Hz
Out Put Power:1260-1500W

COMPONENTS:

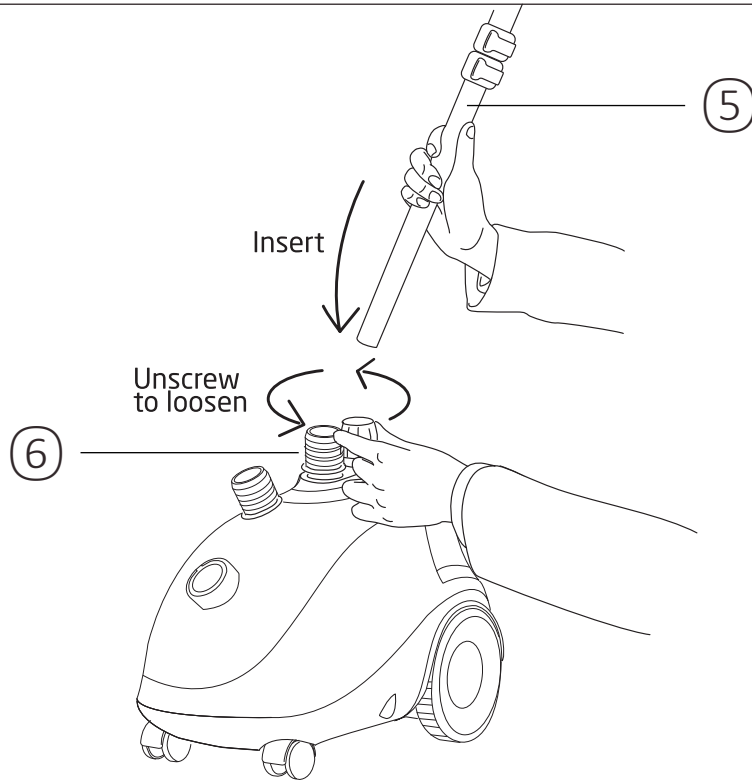
- 1.Steam Nozzle
- 2.Steam Handle
- 3.Steam Hose
- 4.Hanger
- 5.Telescopic Pole
- 6.Pole Locking Nut
- 7.Water Tank
- 8.Steam Hose Connector
- 9.Power Cord
- 10.Switch Knob
- 11.Fuselage
- 12.Base Support
- 13.Support Feet
- 14.Drain Plug
- 15.Wheel
- 16.Fabric Brush



Note:

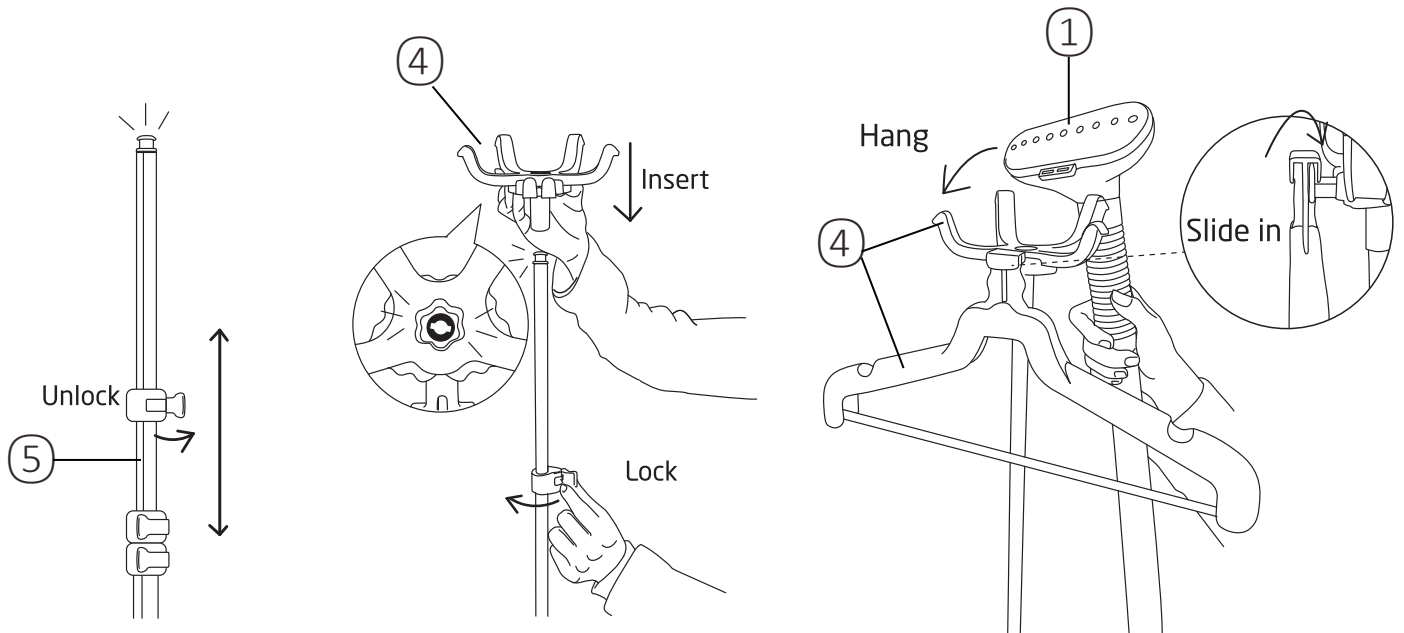
Before installing, please check carefully the product package to avoid missing any parts, for some of them place at the sides of polystyrene foam.

Step 1



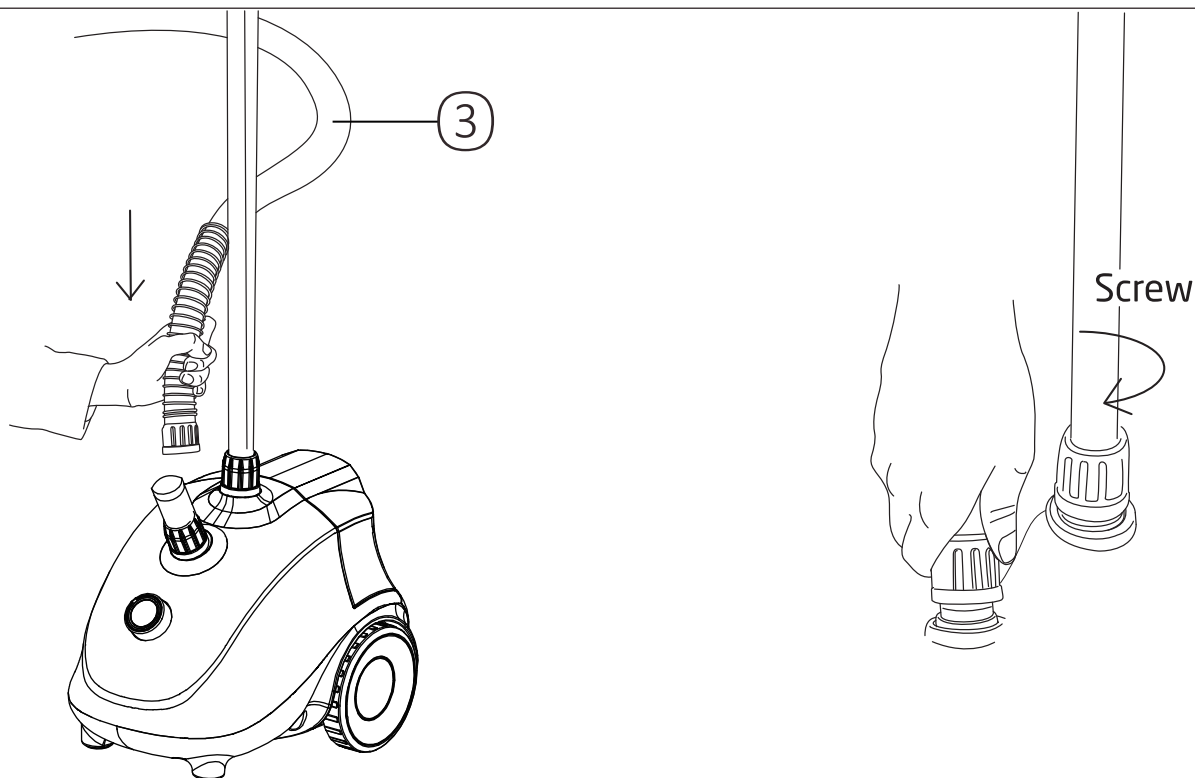
Unscrew the pole locking nut (6). Insert the telescopic pole (5) and lock in place.

Step 2



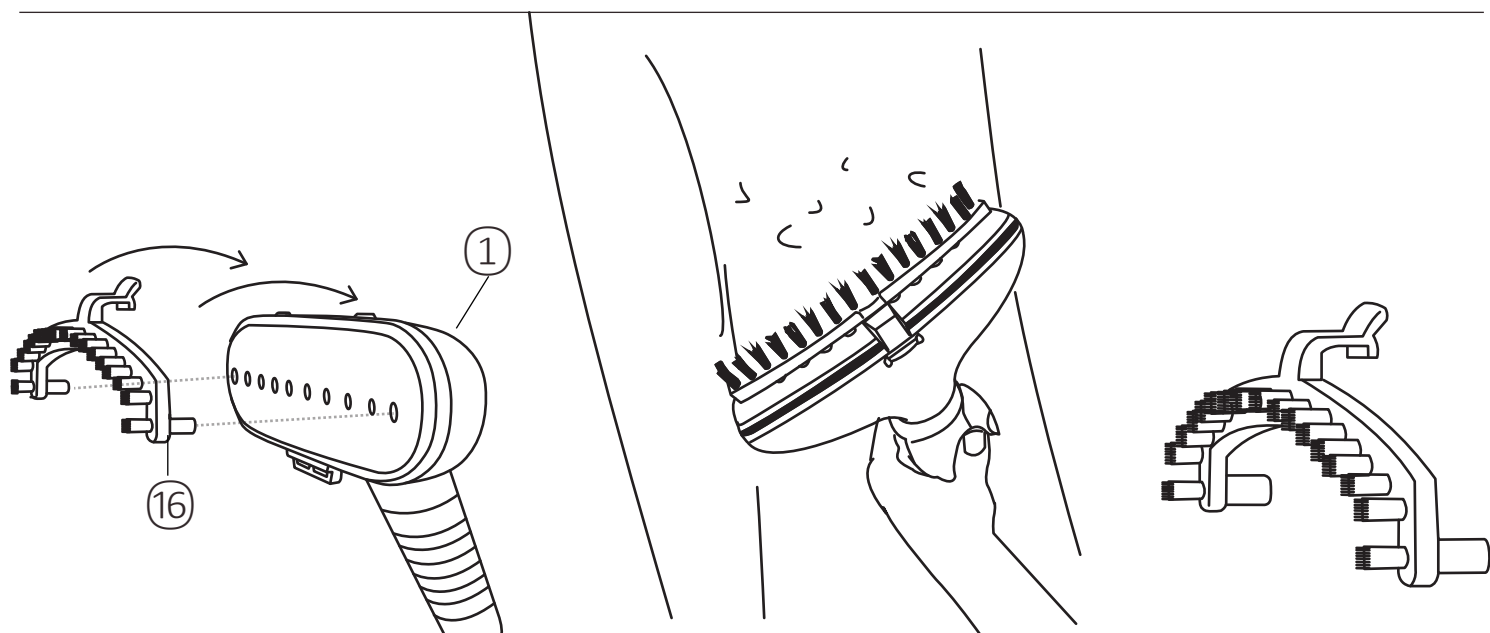
Unlock the telescopic pole (5) lock to extend the pole to desired height and lock in place. Attach the hanger (4) to the top and lock in place.

Step 3



Insert and connect the steam hose ③ with the hose connector base screw the hose connector nut to lock in place.

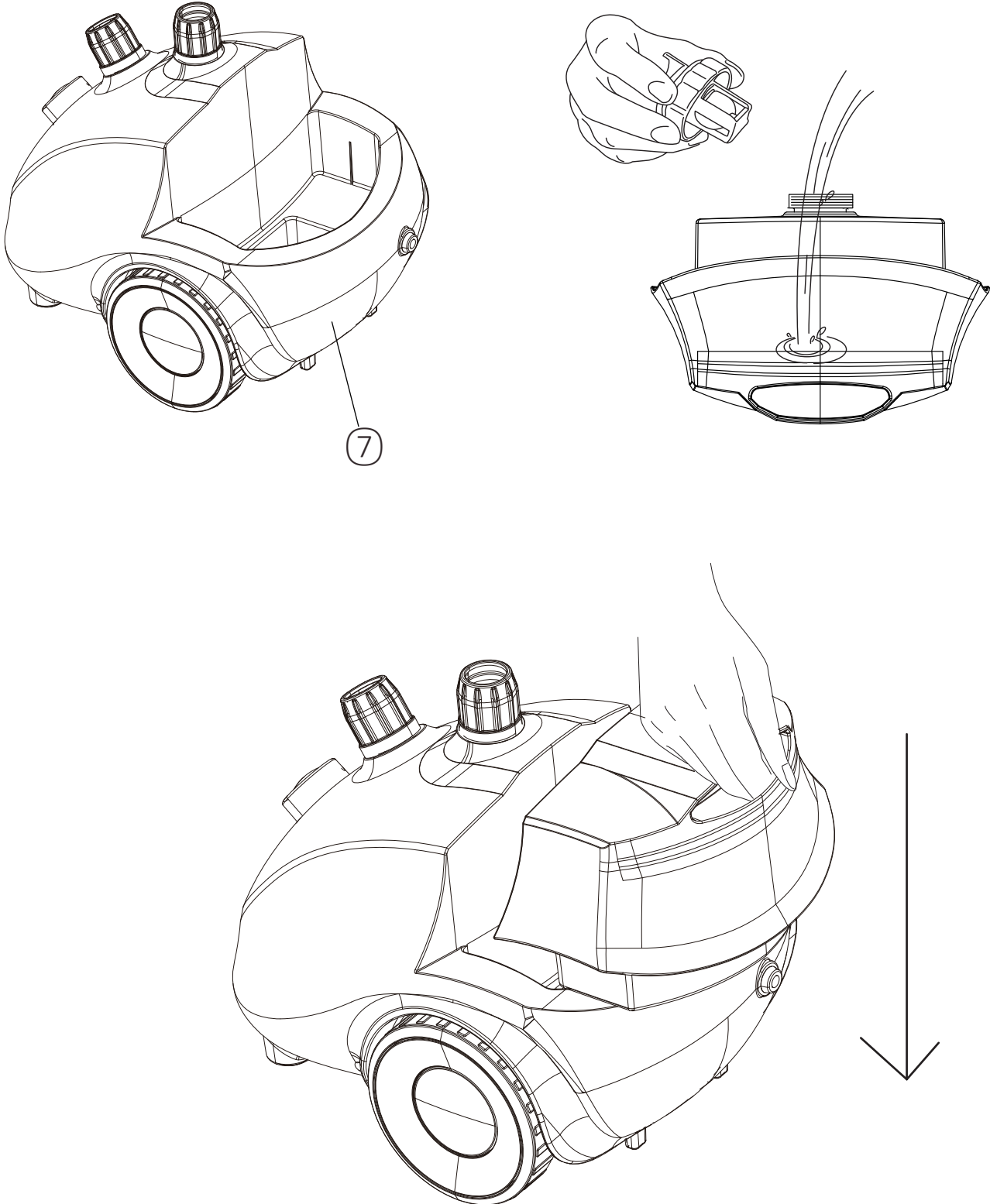
Step 4 FABRIC BRUSH ASSEMBLY



! Be sure to wait for the steam to stop coming out to avoid burns!

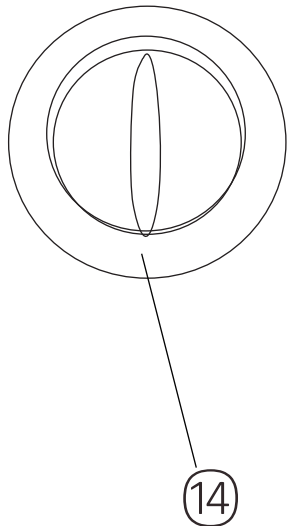
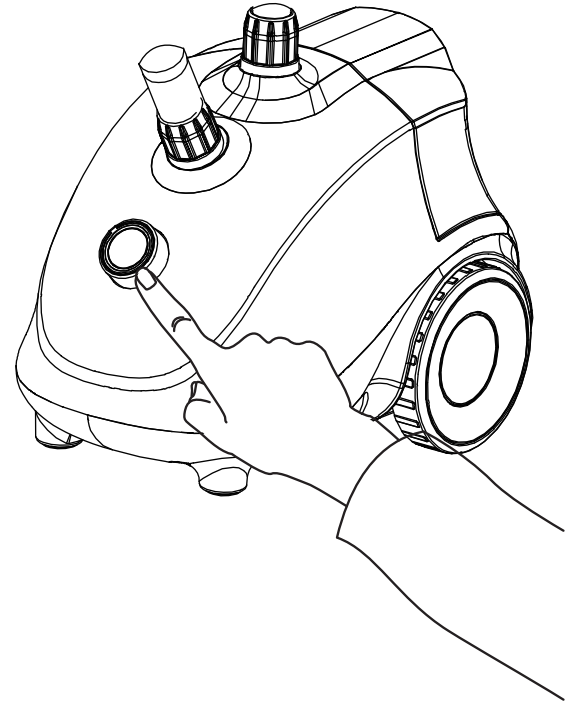
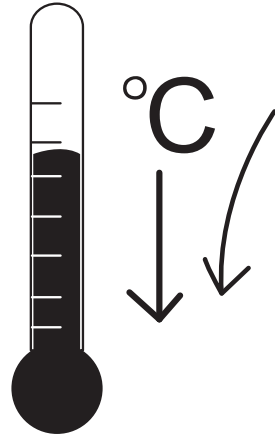
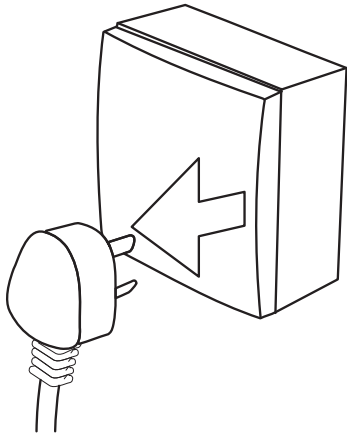
Place the rods of the fabric brush ⑯ to the circle of steam nozzle ①.
Press the brush to the steam nozzle ① and lock in place.

Step 5 FILLING THE WATER TANK

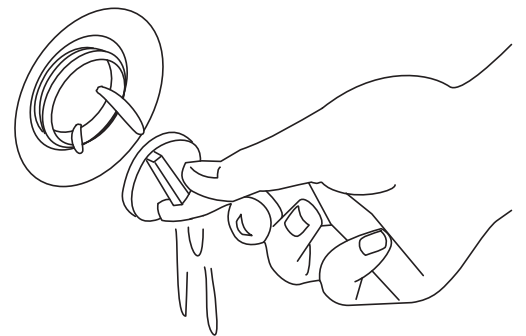
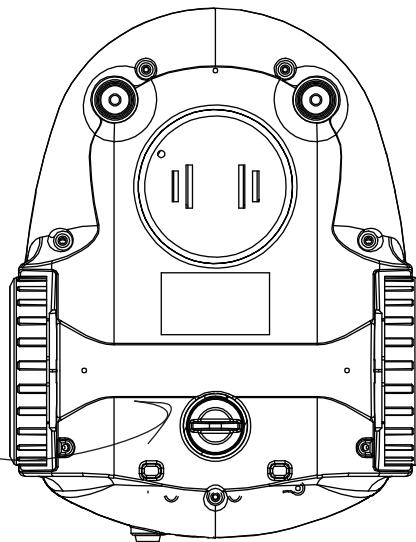


Take out the water tank (7) and unscrew the water tank nut. Fill the tank with water (the temperature of the water should be under 131°F (50°C)). In order to prolong the life of the appliance, we recommend you to use distilled water. Do not use the machine when the water tank is low or lack of water during operation, or it will damage the appliance.

Step 6 HOW TO USE THE DRAIN PLUG



14



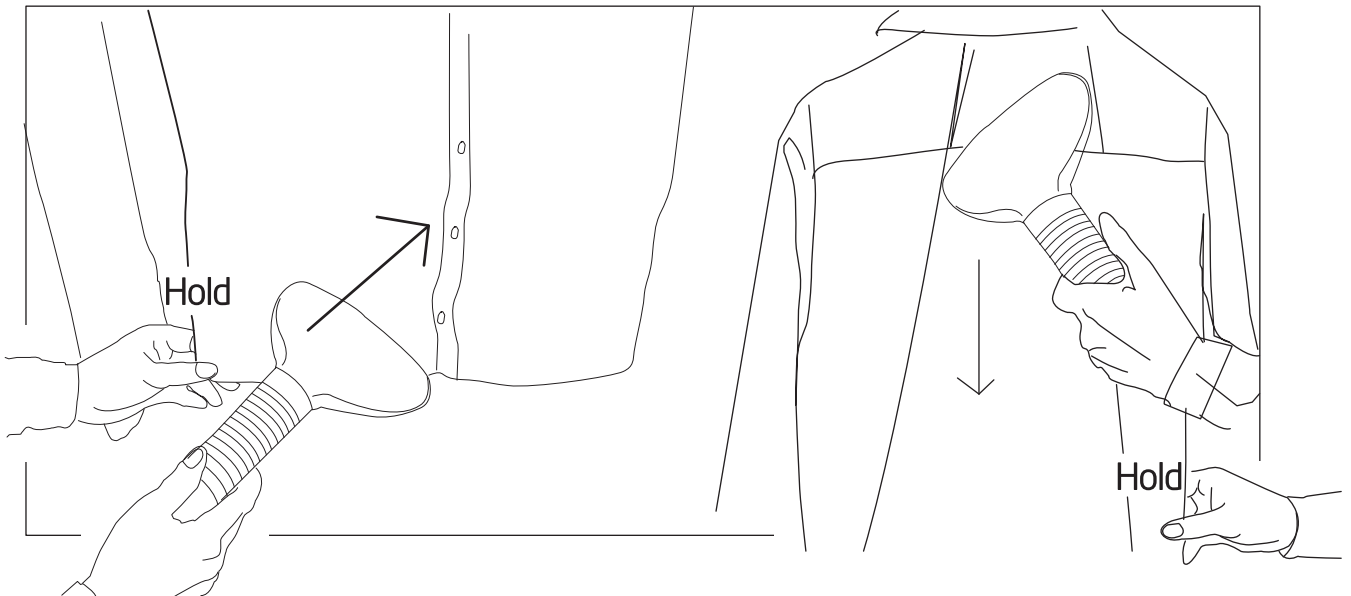
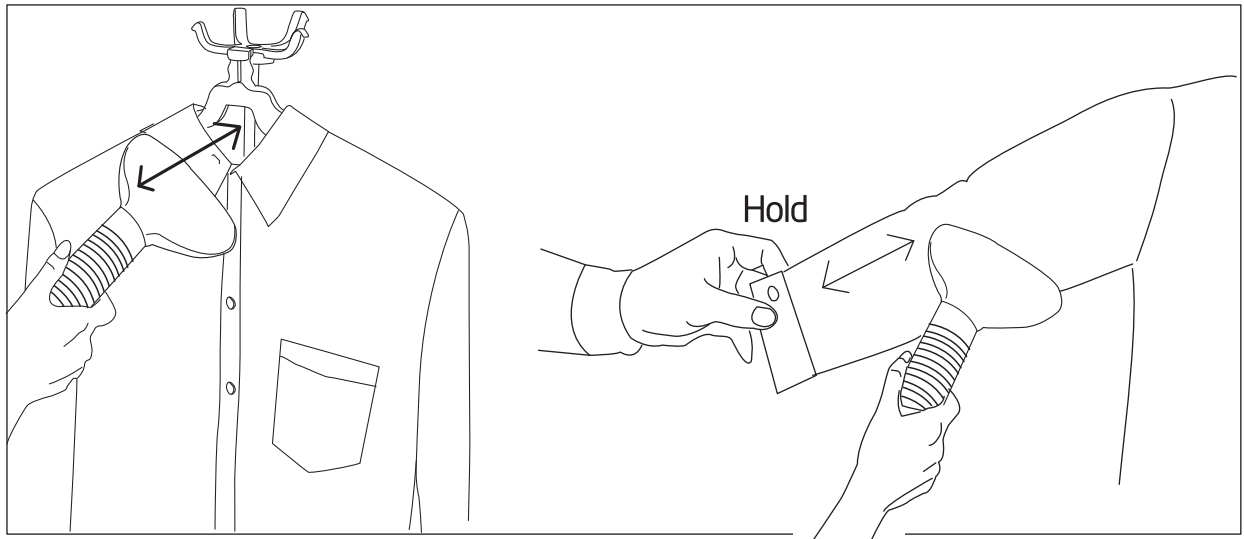
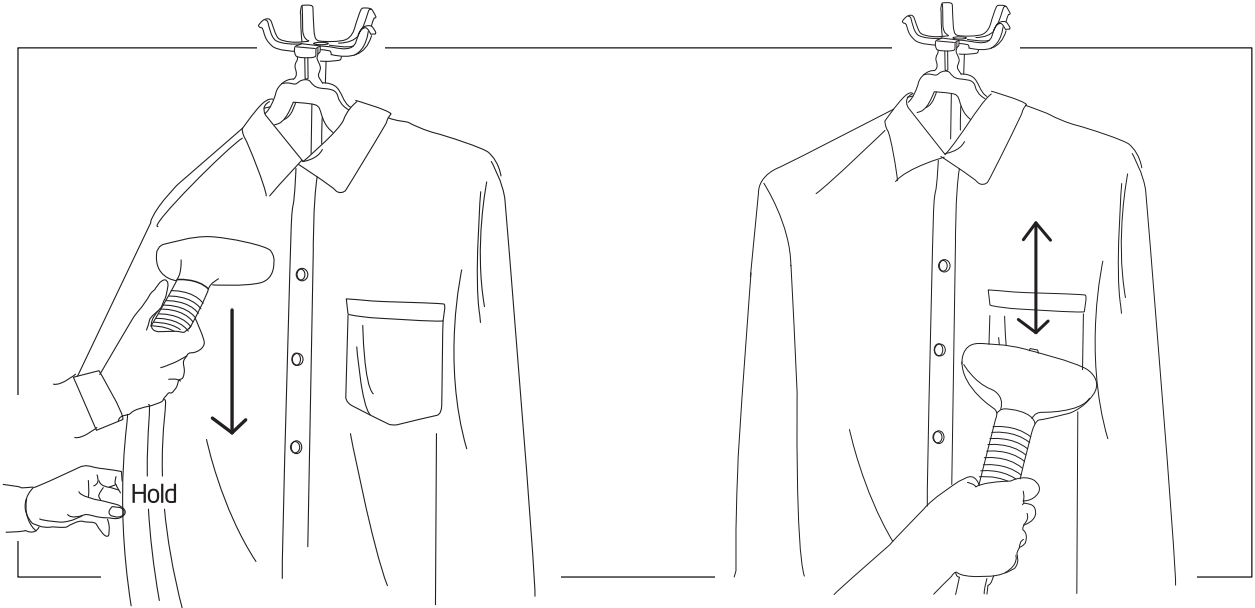
Turn off and unplug the unit. Wait at least 30 minutes until the unit has cooled down completely.

Unscrew drain plu ⑭ and empty the water reservoir. Fold and remove the telescopic rod and steam nozzle.

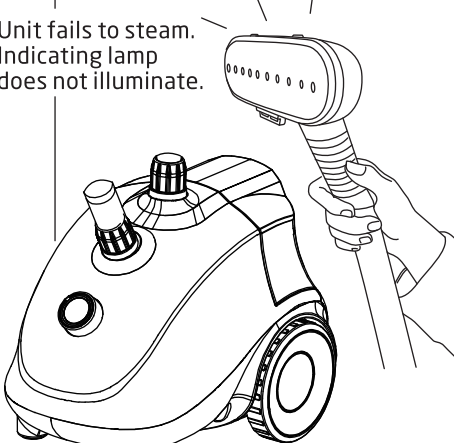
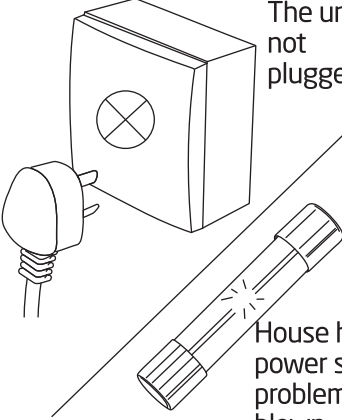
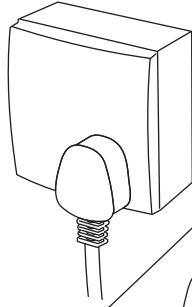

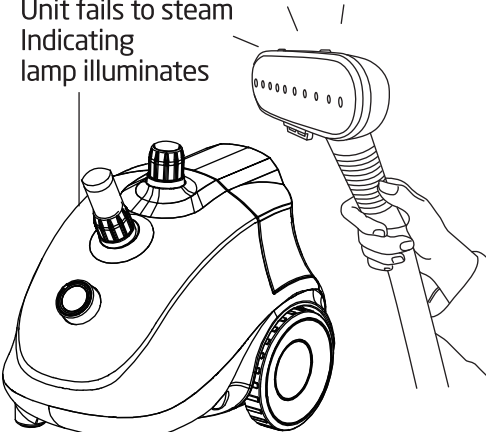
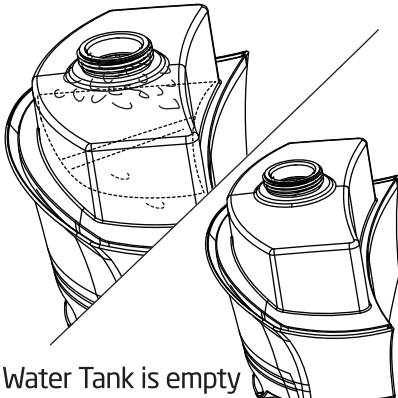
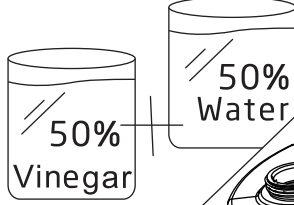
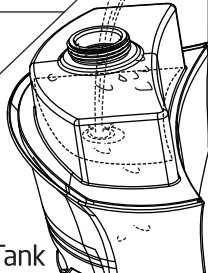
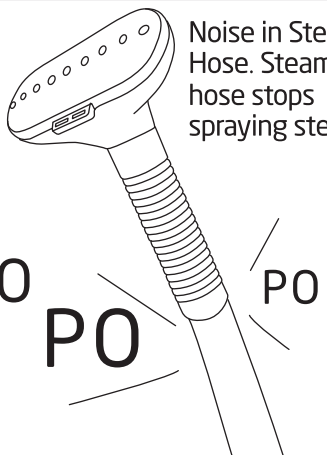
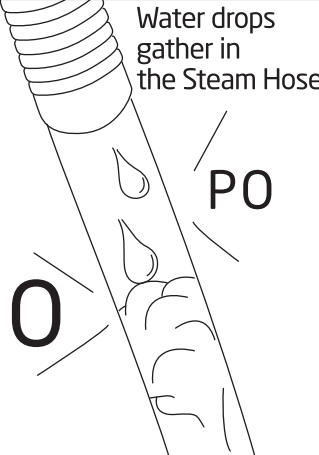
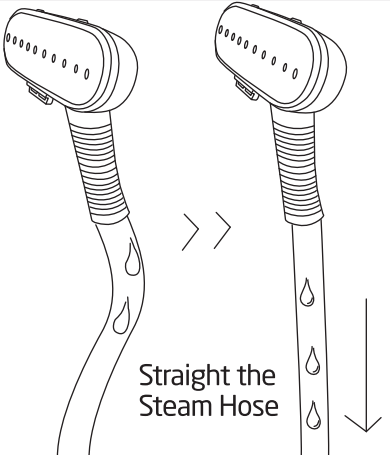
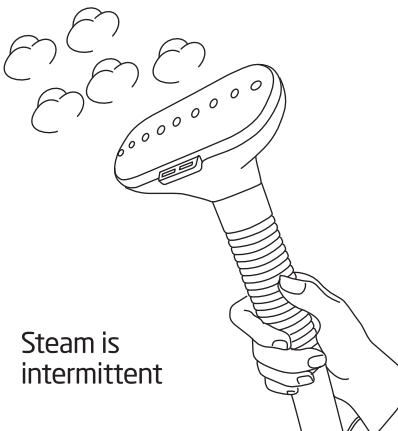
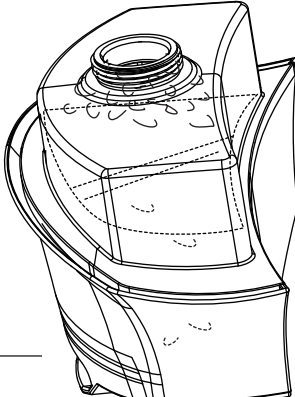
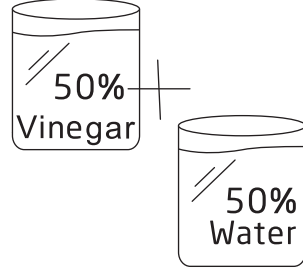
Attention: Tighten the drain plug after emptying the water reservoir. Make sure the drain plug is screwed each time before use.

Step 7 HOW TO STEAM

⚠ Watch out for steam sprays when using to avoid burns.



TROUBLE SHOOTING

Problems	Reason	Solution
<p>Unit fails to steam. Indicating lamp does not illuminate.</p> 	<p>The unit is not plugged in</p>  <p>House hold power system problem /fuse is blown.</p>	<p>Plug in the unit</p>   <p>Call a qualified electrician for help.</p>
<p>Unit fails to steam Indicating lamp illuminates</p> 	<p>Mineral build-up</p>  <p>Water Tank is empty</p>	<p>Follow the removal mineral build-up procedure.</p>   <p>Refill the Water Tank</p>
<p>Noise in Steam Hose. Steam hose stops spraying steam</p> 	<p>Water drops gather in the Steam Hose</p>  <p>PO</p>	 <p>Straight the Steam Hose</p>
<p>Steam is intermittent</p> 	<p>Mineral build-up in WaterTank</p> 	<p>Follow the removal mineral build-up procedure</p> 

REMOVING MINERAL BUILD-UP

High mineral in many municipal water suppliers may cause mineral built-up in garment steamers. Mineral residue inside of the internal pipes and heater can result in intermittent steam or, in some cases, no steam at all.

To reduce the occurrence of mineral build-up in the steamer, use of de-mineralized or distilled water is recommended. Please follow the steps below to remove the mineral built-up:

1. Turn off the unit, and unplug the power cord.
2. Remove the steam hose. Collapse and remove the telescopic pole.
3. Drain the water reservoir, and empty water from the water tank.
4. Mix a solution of 50% vinegar and 50% water. 2 cups of mixture will be enough in general case.
5. Slowly pour the mixture from the hose connector to the water reservoir.
6. Continue to pour mixture into the hose connector until the water reservoir is about half full, near the top of the hose.
7. Wait for 40 minutes.
8. Drain the mixture by unscrewing the drainage valve and emptying the mixture into a sink or tub.
9. Pour clean water in the hose connector and water reservoir inlet, and drain repeat this step until the vinegar odor dissipates.
10. Reassemble the unit and operate normally.

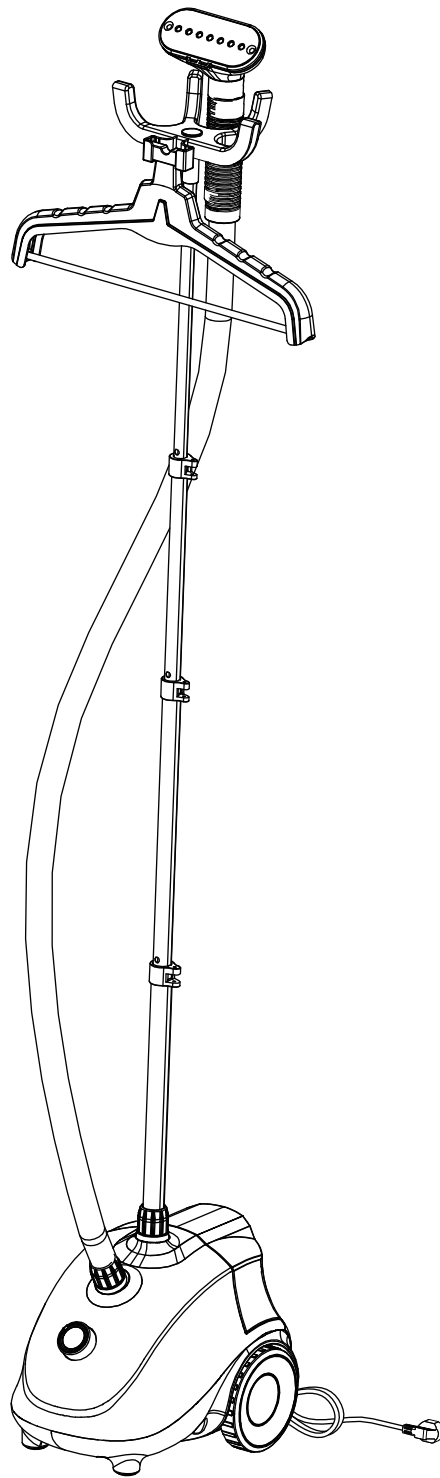
CLEANING AND STORAGE:

We recommend you follow this procedure at least once per week.

1. Turn off the appliance.
2. Unplug the power cord.
3. Allow the steamer to cool completely for at least 30 minutes.
4. Remove and drain the water tank. Rinse the water tank with fresh water, and drain completely. Place the water tank back.
5. Remove the drain plug and empty the water tank.
6. Flush the unit by filling the water reservoir and the hose connector with fresh water and draining completely. Replace the drain plug.
7. Please move the appliance by nudging, or holding the appliance and carrying the unit.
8. Store in a cool, dry place.

WARNING:

1. This appliance is not intended for use by persons (including children) with reduced physical, sensory or mental capabilities, or lack of experience and knowledge, unless they have been given supervision or instruction concerning use of the appliance by a person responsible for their safety.
2. Children should be supervised to ensure that they do not play with the appliance.
3. If the supply cord is damaged, it must be replaced by the manufacturer, its service agent or similarly qualified persons in order to avoid a hazard.
4. The Product is only for household /indoor use.



Technical Support

(909)637-7665 | (909)637-7593

Other Info

HJ-Customer-Service@outlook.com

Thank you for choosing this product. We strive to provide you with the best quality products and service in the industry. Should you have any issues, please don't hesitate to contact us.