

Hydroponic System

Quick Start Guide

12Pods

- Full Season Home Garden
- Quick-Growing
- Year-Round Herbs & Veggies Supply

Features



Adapter Input: 100-240VAC, 50/60Hz
Adapter Output: 12VDC 2.0A

Hydroponic System Instructions

WARRANTY PERIOD AND CONDITIONS

We devote special attention to selecting high quality materials and use manufacturing techniques that enable us to create designer and durable products.

This warranty covers product breakdowns and malfunctions under the condition that the product is used in accordance with its intended use and subject to installation and maintenance in accordance with proper use and the information contained in the user's manual.

This warranty does not cover defects and damage caused by the natural wear of parts, bad weather, flooding, freezing, damage caused by water quality (hardness, aggressiveness, corrosion, etc.), by the presence of foreign bodies transported by water or otherwise (sand, filings, etc.) or the lack of room ventilation, and damages that could be the consequence of improper use, misuse, negligence, accident or maintenance that is defective or does not comply with proper use or the information in the user's manual.

The following are also excluded from the warranty: harmful consequences due to the use of parts and accessories not manufactured by Brimmel or Vertak or improper replacement parts, disassembly or product modification.

SAFETY

These instructions are for your safety. Please read through them thoroughly prior to installation and retain them for future reference.

It is recommended that you schedule regular care and maintenance to keep your hydroponic system clean and functioning properly.

Package Including



Hydroponics Garden Kit



A+B Plant Food



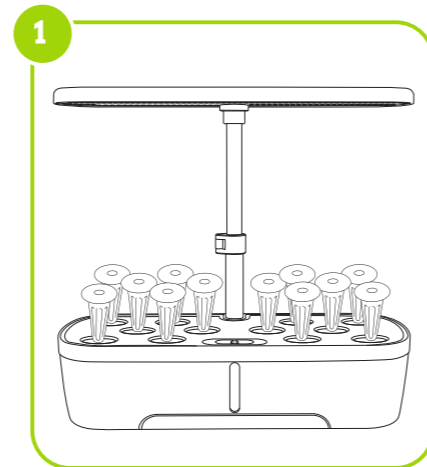
12 pc Pod Kit & Grow Domes
(Seeds not included)



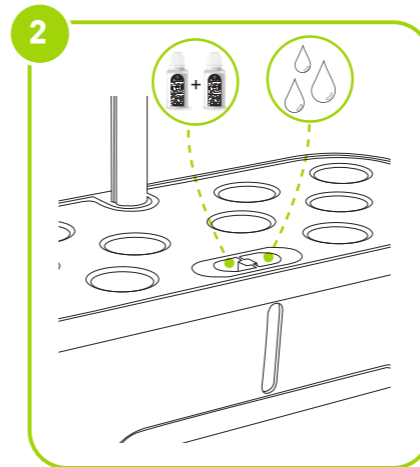
DC 12V 2A Output Adapter

4 EASY STEPS

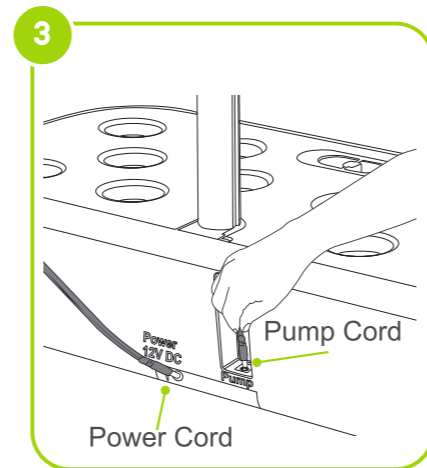
To Get Your Garden Up



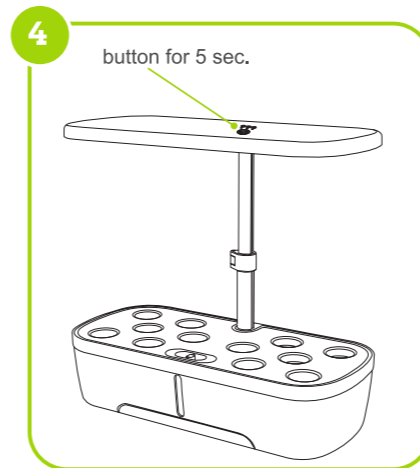
Place seed pods into the bowl.



Add water and plant food through the feeding window.



Make sure that pump cord is plugged in. Then plug in the power cord adapter.



Press and hold the "☀️" button 5 seconds to start your hydroponic system.

NEXT: Planting Your Garden

Before your planting, Please press the "☀️" button for 5 sec.

"☀️" Setting is a quick setup for starting your new garden.

The LED timer pump will be reset once you press it for 5 sec.

1. Watering

-Add water through the feeding window.

-It's ok to add water at any time. Keeping the water topped up will promote good growth.

-It's better to use tap water or distilled water then well water.

-Your pump cycle is set to be ON for 5 minutes and OFF for 25 minutes.

2. Add Nutrients

-Add nutrients every 2 weeks (15ml A+15ml B Plant Food).

-Don't over feed. Too much plant food can harm your plants. Use the recommended amount of plant food.

-Add plant food into the bowl through the feeding window when you first start your planting.

3. Growing Lights

-Hydroponic System has a built-in lighting timer. Once you set it up, it will automatically turn on or off every day.

- Mode A: ON for 12 hours and OFF for 12 hours every day.

- Mode B: ON for 14 hours and OFF for 10 hours every day.

- Mode C: ON for 16 hours and OFF for 8 hours every day.

-If you want to change the time of day when your lights turn on, touch and hold you finger on the "☀️" button for 5 sec. Your grow lights will turn on at this time every day.

SPECIFICATIONS

| | | |
|------------|-----------|---|
| Grow Light | Power | 20W |
| | LED Color | 64 * White, 55 * Yellow, 15 * Red, 5 * Blue |
| Adapter | Input | 100-240V AC, 50/60Hz |
| | Output | 12V DC 2.0A |