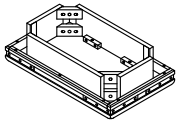
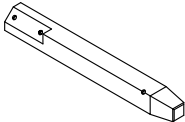
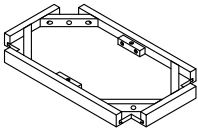




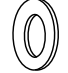

ASSEMBLY INSTRUCTIONS

Reminders

1. Use only the hardware supplied.
2. Do not over-tighten bolts.
3. This item may require periodic tightening.

Hardware List :

COMPONENTS LIST			QTY
A	Table Top		1pc
B	Table Legs		4pcs
C	Bottom Shelf		1pc

NO	DESCRIPTION	SIZE	SKETCH	QTY
1	Long Bolt	1/4"x 57mm		12pcs
2	Spring Washer	5/16"x 12mm		12pcs
3	Flat Washer	5/16"x 19mm		12pcs
4	Allen Key	58x 23x 4mm		1pc

Note: Two or more people are needed for assembly.

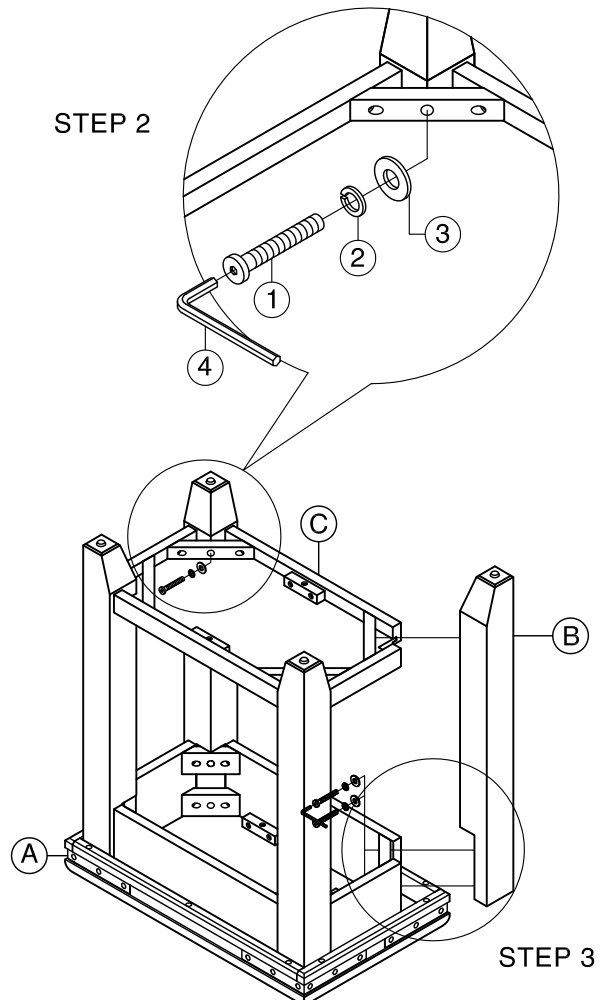
Step (1): Place Table top (A) flat down on a soft surface such as a carpet. Use (1)(2)(3) to attach three legs (B) to table top(A) as shown in the diagram. Tighten with allen key (4)

Step (2): Use (1)(2)(3) to attach the bottom shelf (C) to legs (B). Tighten with allen key (4) .

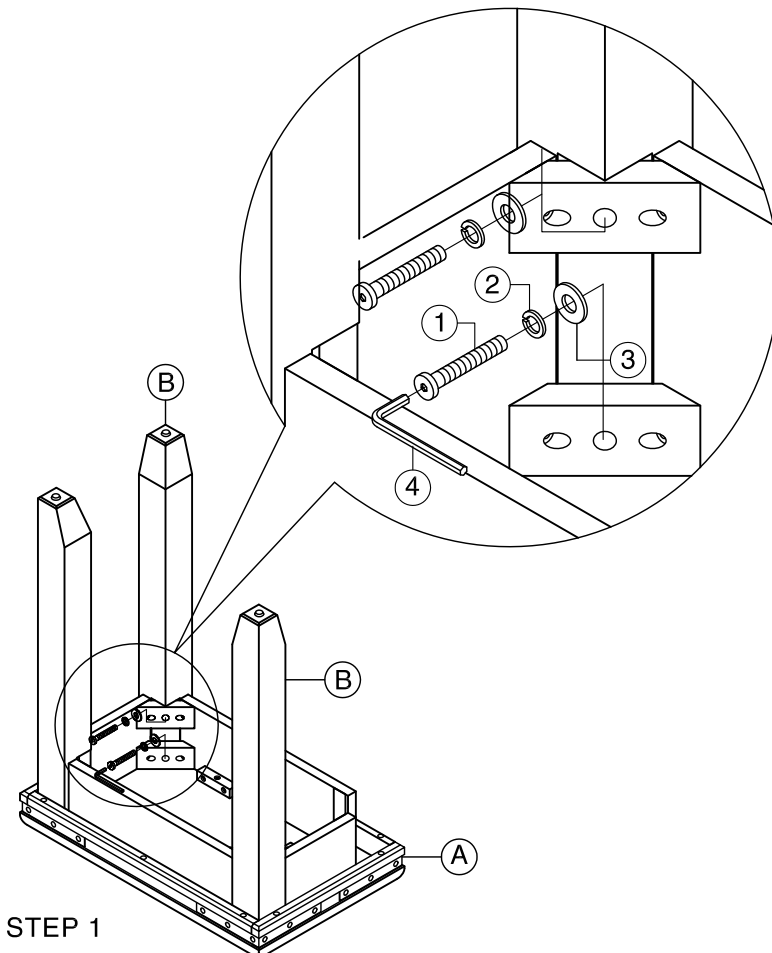
Step (3): Attach the last leg (B) to the table top (A), by using (1)(2)(3). Attach the last leg (B) to bottom shelf (C) by using (1)(2)(3), Tighten with allen key (4).

Assembly is now complete. Thank you for your purchase.

STEP 2



STEP 3



STEP 1