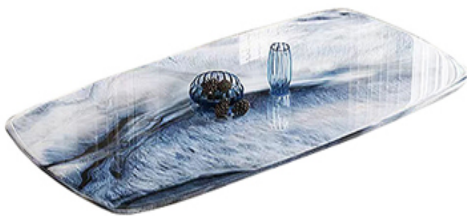




Preparation before unpacking inspection and installation

Component and accessory inspection: Confirm that all components and accessories are complete. The main components include a desktop, a base, and a parts package. Please carefully check the box to ensure that no accessories are missing.



Desktop 1



Base 1



Small screws 7



Self-provided tools:

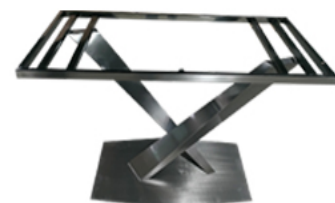
<..... Electric screwdriver (for installation)

Crowbar (for opening the box)>

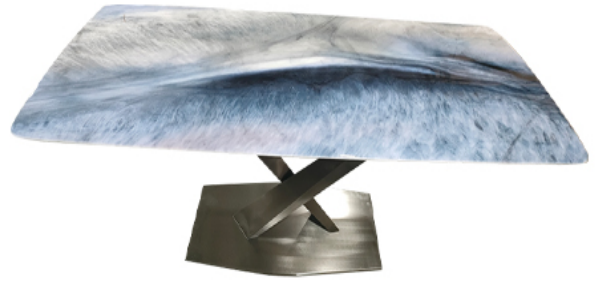


Base Installation

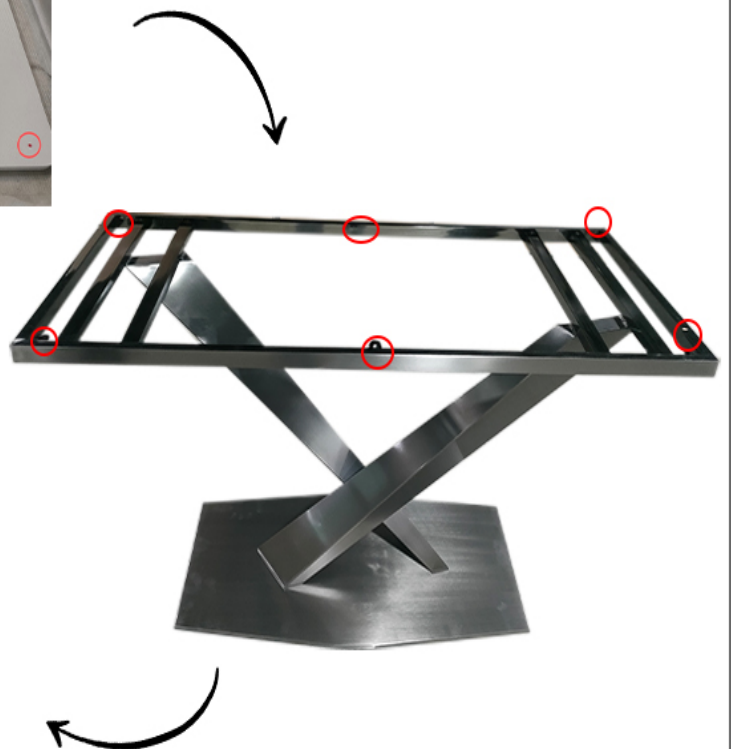
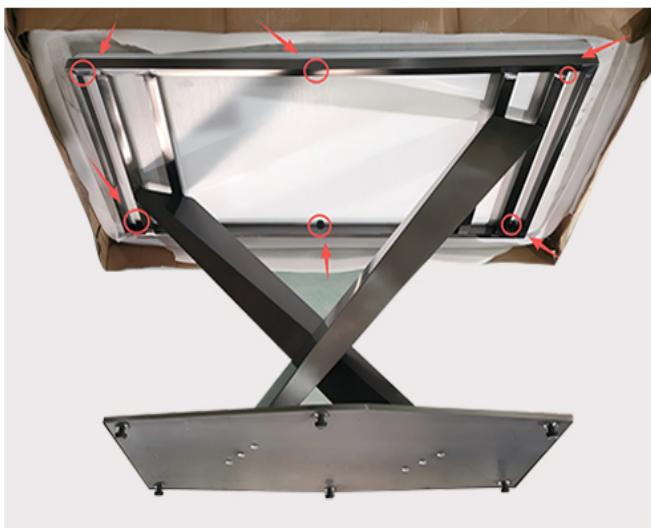
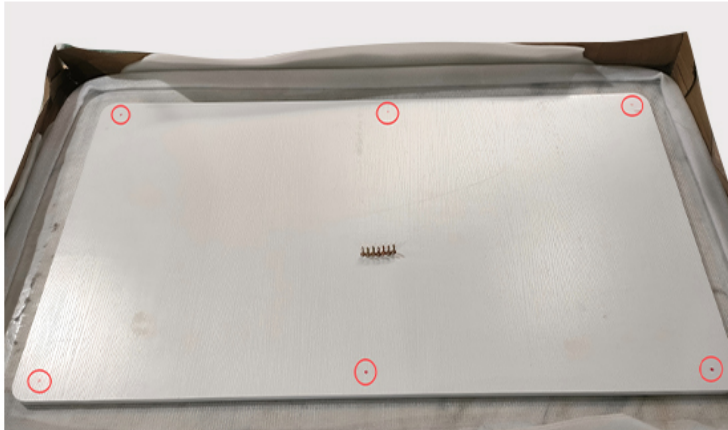
1. Remove the base and position it properly.



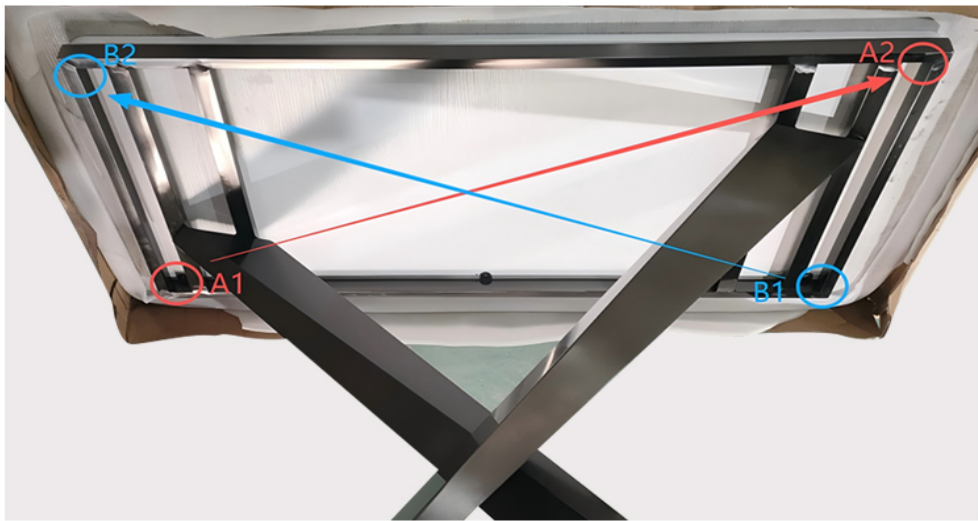
2. Place the desktop on the base.



3. Align the 6 positioning points marked in red at the bottom of the desktop with the positioning holes on the base. Make sure the desktop is facing upwards and fix it from bottom to top
(do not place the desktop on the ground or install it upside down)



4. First, fix A1 and A2 together with screws, then fix B1 and B2, and finally fix the remaining positioning holes one by one. The installation is completed.



The tools to be used :

