

Owner Manual



15 : 00

estimated
assembly time



1 or more

people required

Ok, let's
get started!



- Put on mood music!
- To prevent damage to product, use the clean side of package carton or rug as working surface.
- In the event of missing or damaged parts, delivery problems etc., please reach out to our team.
We will be happy to fix the problem!

care guide

- Clean regularly with a soft and dry cloth.
- To protect finish, avoid use of abrasive cleaners.
- Wipe up spills immediately. Please!



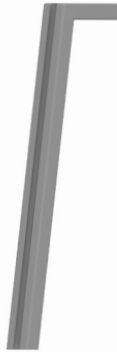
ⓘ **While assembling the product, tighten the bolts up to 50%. Once all parts are in place, only then fully tighten the bolts.**



product parts



(A)
Tabletop
x1



(B)
Table Legs
x3

what's included



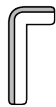
(C)-Bolt
(8x35mm)
x6



(D)-Washer
(8.5mm)
x6



(E)-Lock Washer
(8.5mm)
x6



(F)-Allen key
x1

RS

Red sticker

YS

Yellow sticker

GS

Green sticker

assembly instructions

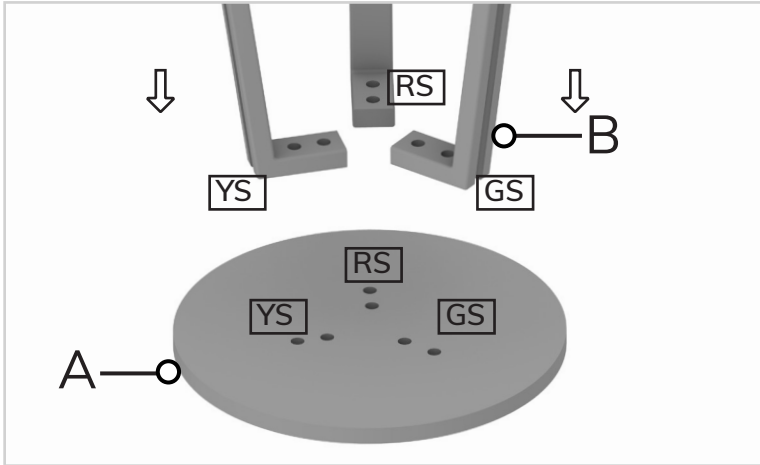
Friendly Tip: Take a deep breath going in. This may be a tricky part, but nothing too overwhelming. Just follow these steps to the T and the outcome will be worth it!



- ⓘ While assembling the product, tighten the bolts up to 50%. Once all parts are in place, only then fully tighten the bolts.

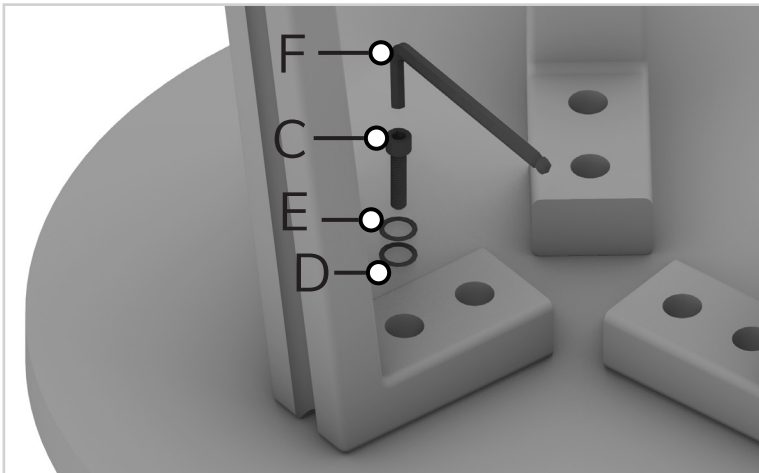
step 1:

Start by placing the table top (A) upside down on a flat surface. Now align the legs (B) with the slots given on the table top (A). Ensure the stickers on the leg are similar to the stickers on the table top.



step 2:

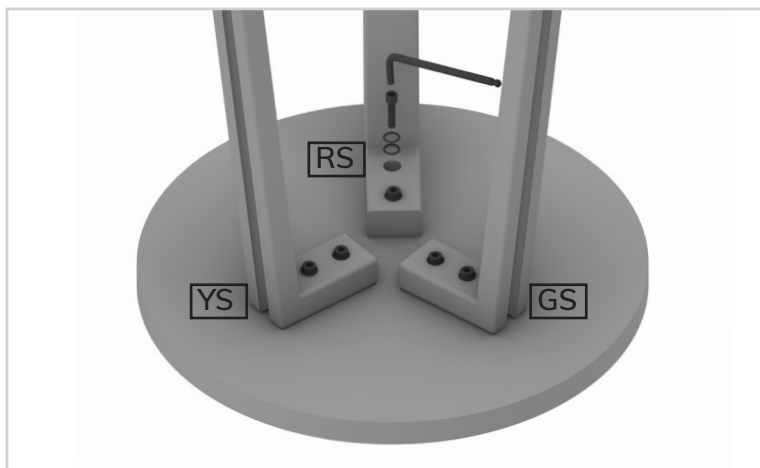
Note: Fix the leg (B) to the top by using plain washer (D), lock washer (E) & bolt (C) in the given slots. Tighten them using an allen key (F).



⚠ While assembling the product, tighten the bolts up to 50%. Once all parts are in place, only then fully tighten the bolts.

step 3:

Repeat step 2 with the remaining legs.



step 4:

Make sure all the table legs (B) are tight and secure.



**⚠ While assembling the product, tighten the bolts up to 50%.
Once all parts are in place, only then fully tighten the bolts.**



Voila! Your table is now assembled and secure!