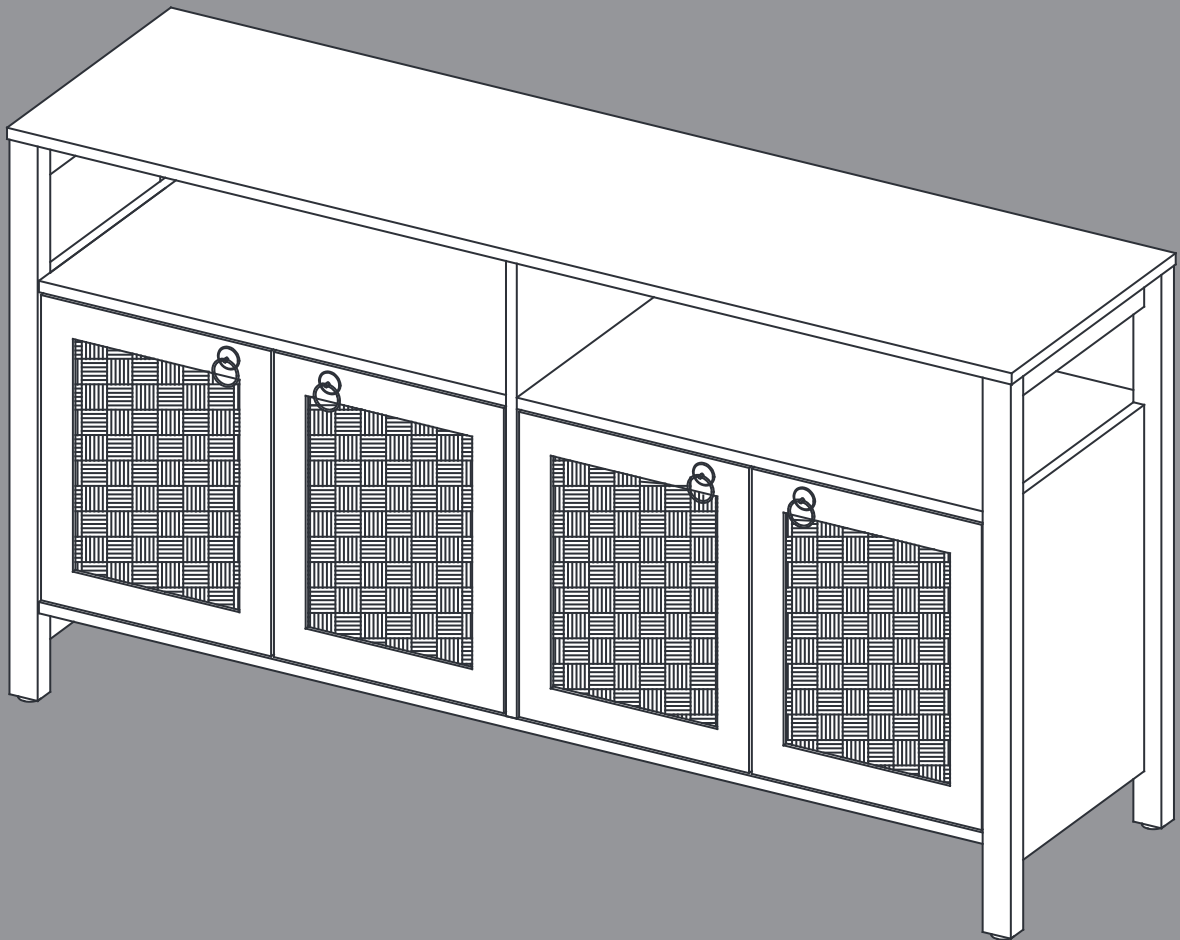


Terra TV Stand



Assembly Instructions

Before beginning the assembly process, please read and save these instructions for reference.

Following these guidelines will ensure a smooth and successful assembly of your product.

1. Part Identification:

Carefully separate and identify all the parts included in your package. Confirm that you have all the components listed in the instruction manual. This step will help you avoid any missing or misplaced parts during assembly.

2. Work Surface:

To prevent any scratches or damage to the product, assemble it on a soft mat or a similar protective surface. This will provide a cushioned area for the components and protect the surfaces from unwanted marks.

3. Step-by-Step Assembly:

Follow the assembly instructions provided, proceeding one step at a time. Take care to understand each step properly before proceeding to the next one. This sequential approach ensures that the assembly is done correctly and minimizes the chance of errors.

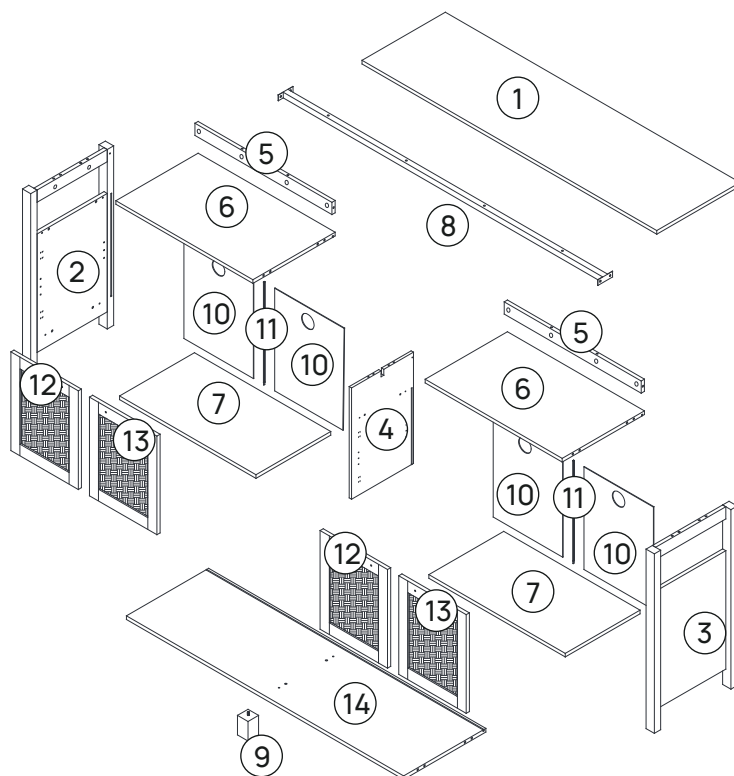
4. Proper Screw Seating:

When attaching screws and nuts, it is essential not to fully tighten them until all screws are correctly seated. By partially tightening each screw and nut initially, you can ensure that they are aligned properly and fit securely before final tightening.

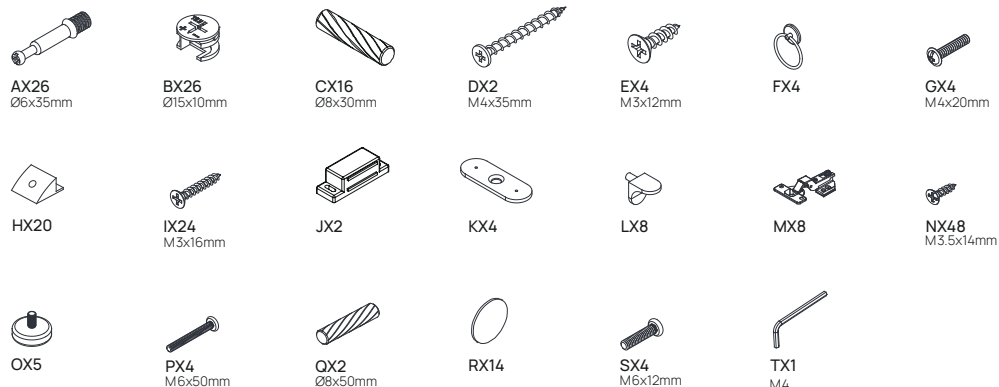
5. Avoid Over-Tightening:

While each screw and nut should be tightened correctly, it is crucial not to over-tighten them. Over-tightening can cause damage to the product or compromise its structural integrity. Use the appropriate amount of force to secure the components without excessive tightening.

Parts List

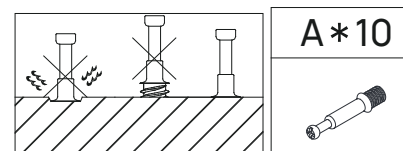
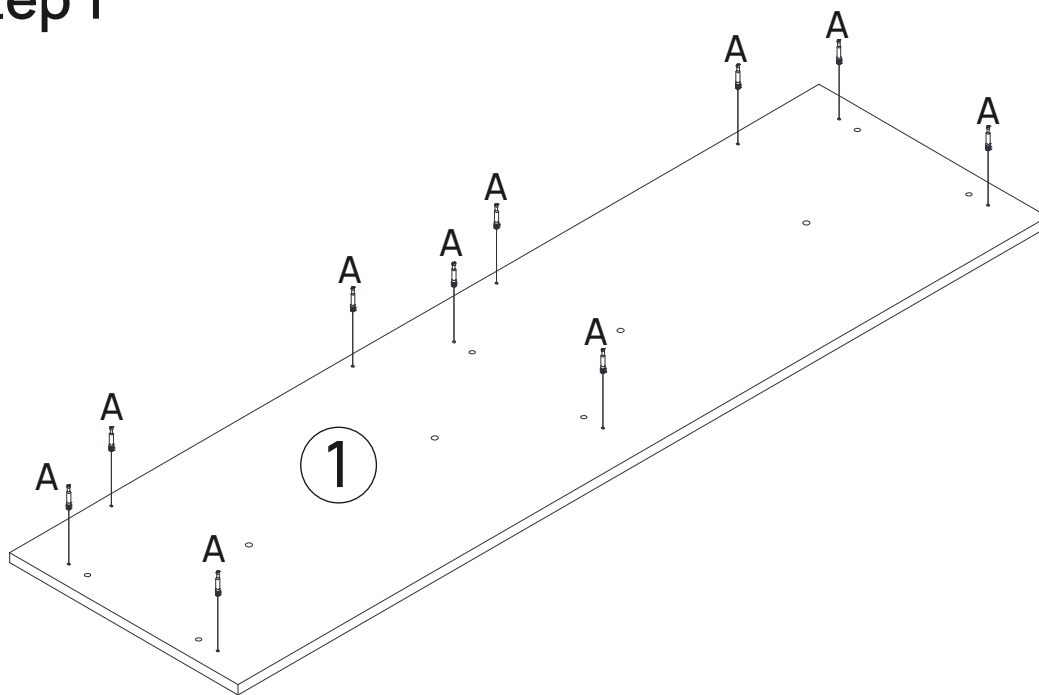


Hardware List

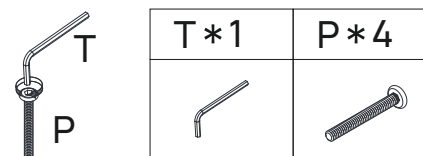
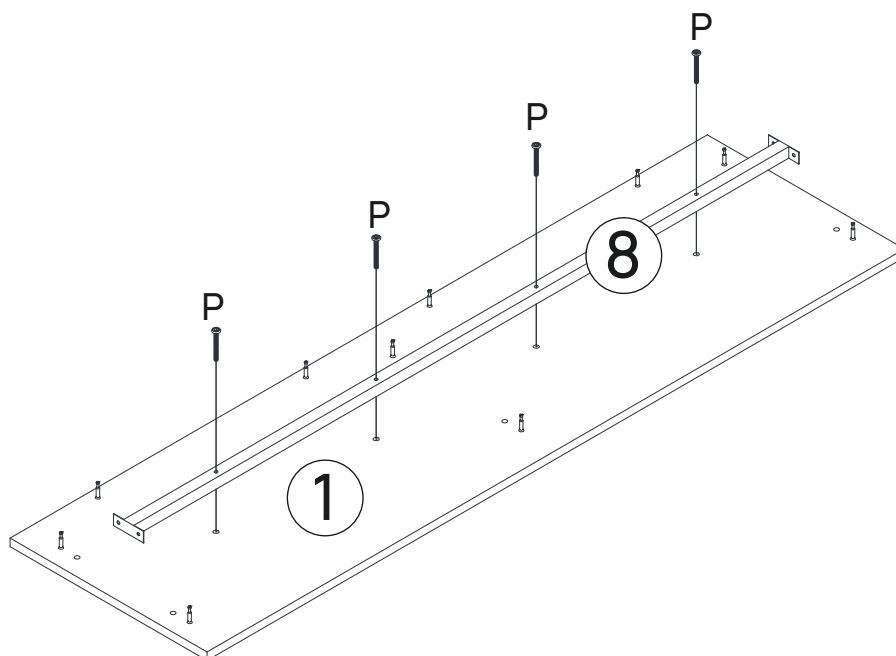


Code	Description	Quantity	Code	Description	Quantity
A	M6*35mm Cam bolt	26+2	L	Metal Pin	8+2
B	Ø15x10mm Cam lock	26+2	M	Hinge	8
C	Ø8x30mm Wood dowel	16+2	N	M3.5x14mm Screw	48+2
D	M4x35mm Screw	2	O	Adjusting the footrest	5
E	M3x12mm Screw	4+1	P	M6x50MM bolt	4+1
F	Handle	4	Q	Ø8x50mm Wood dowel	2
G	M4x20mm bolt	4+1	R	Sticker	14
H	Back clip	20+2	S	M6x12MM bolt	4+1
I	M3x16mm Screw	24+2	T	Wrench	1
J	Magnet	2			
K	Magnet plate	4			

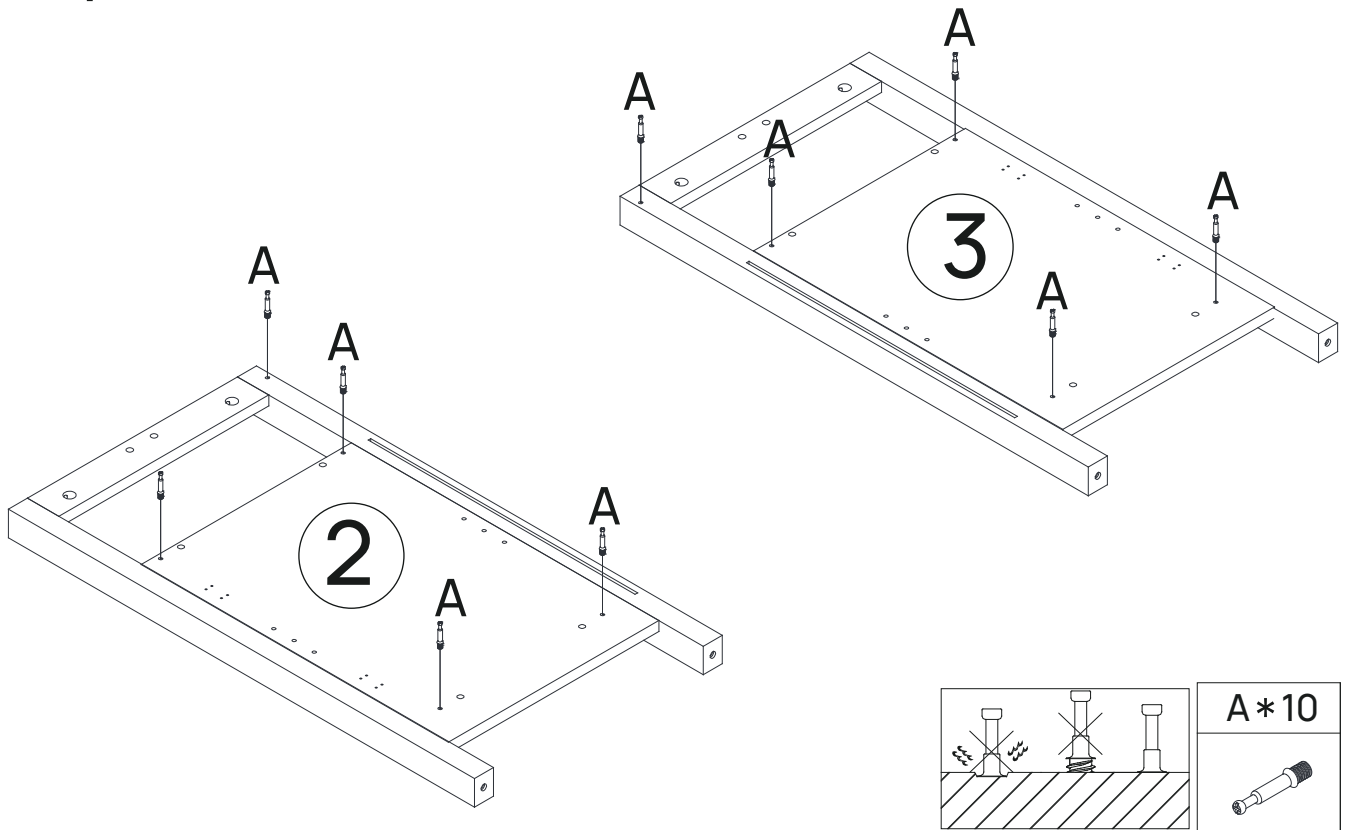
Step 1



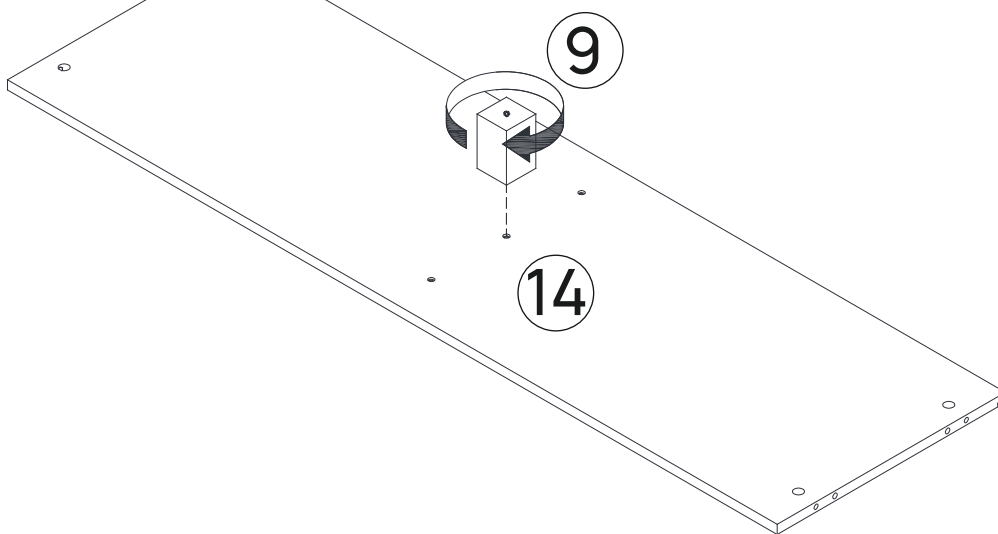
Step 2



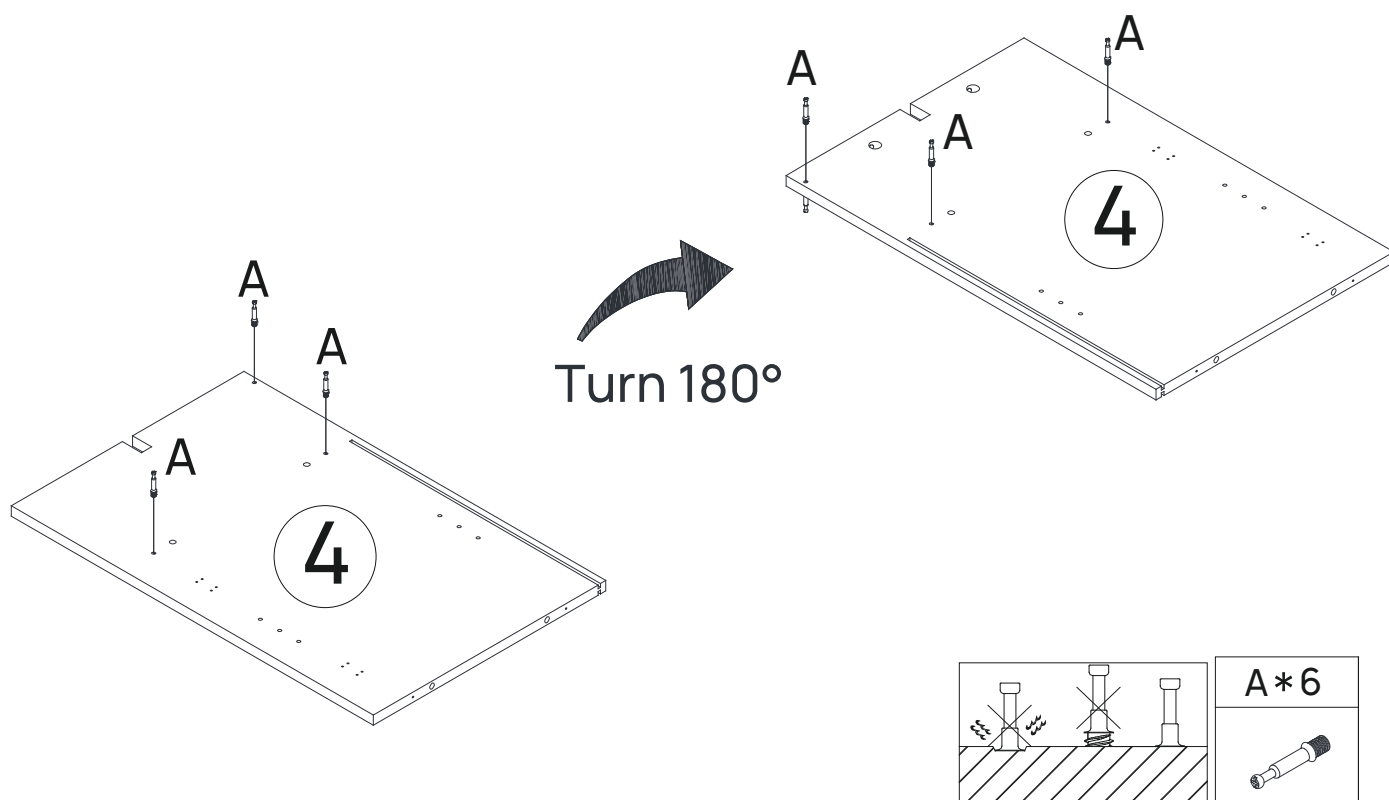
Step 3



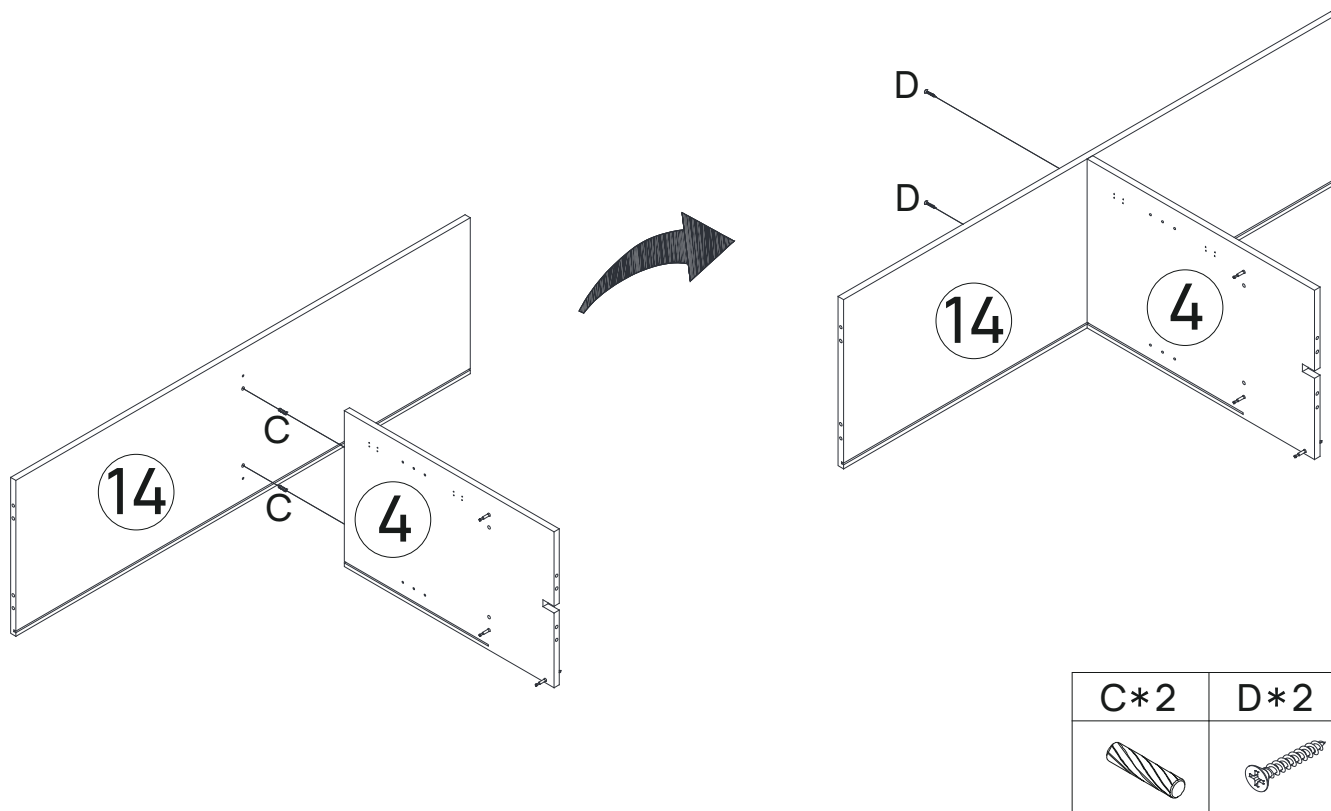
Step 4



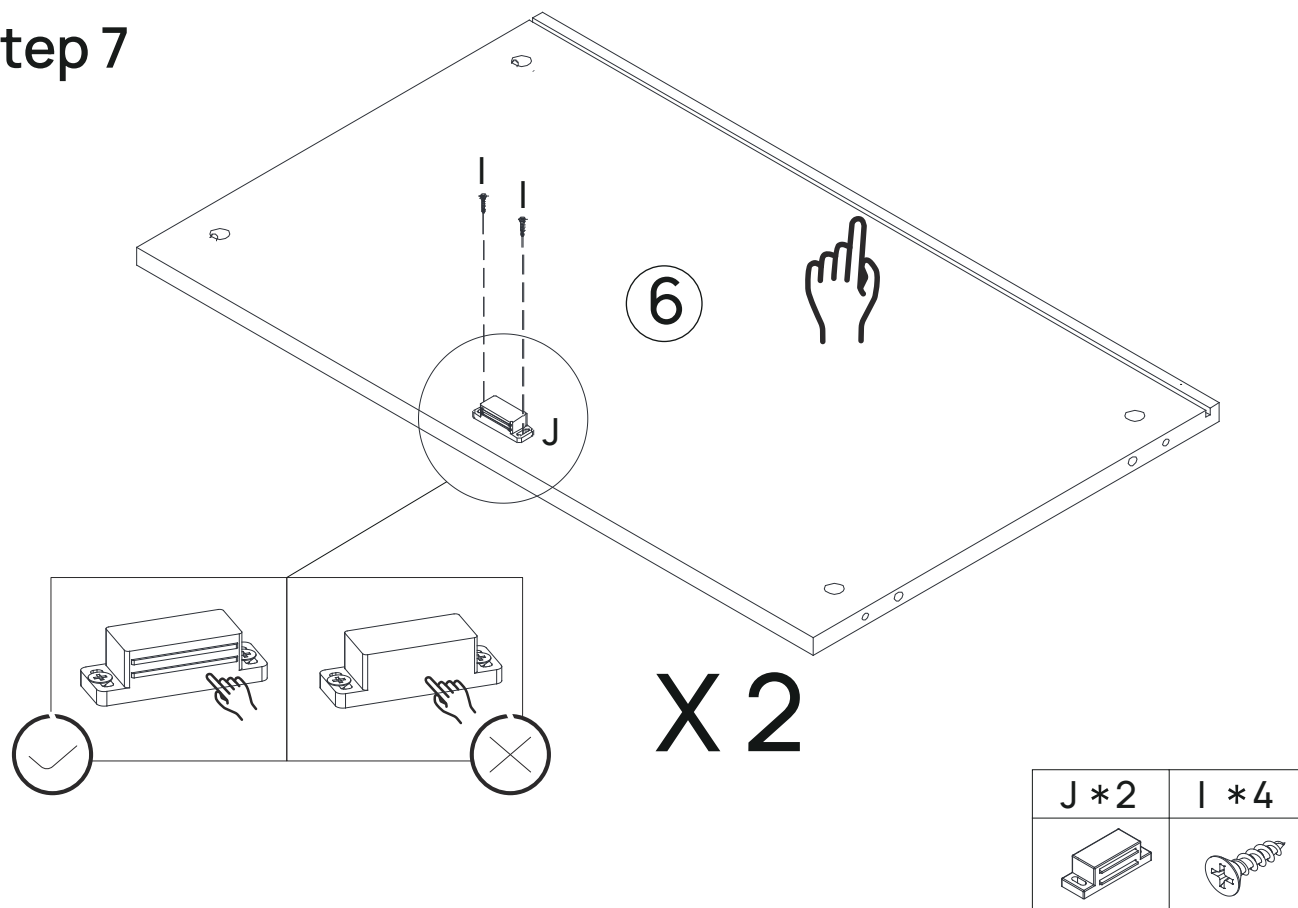
Step 5



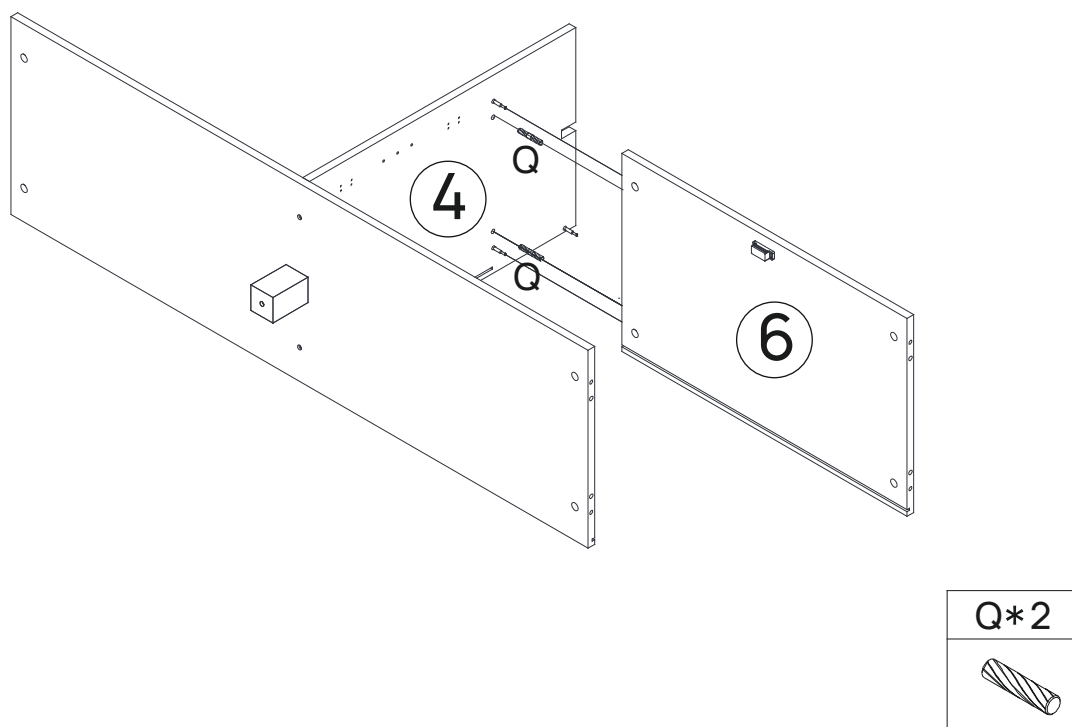
Step 6



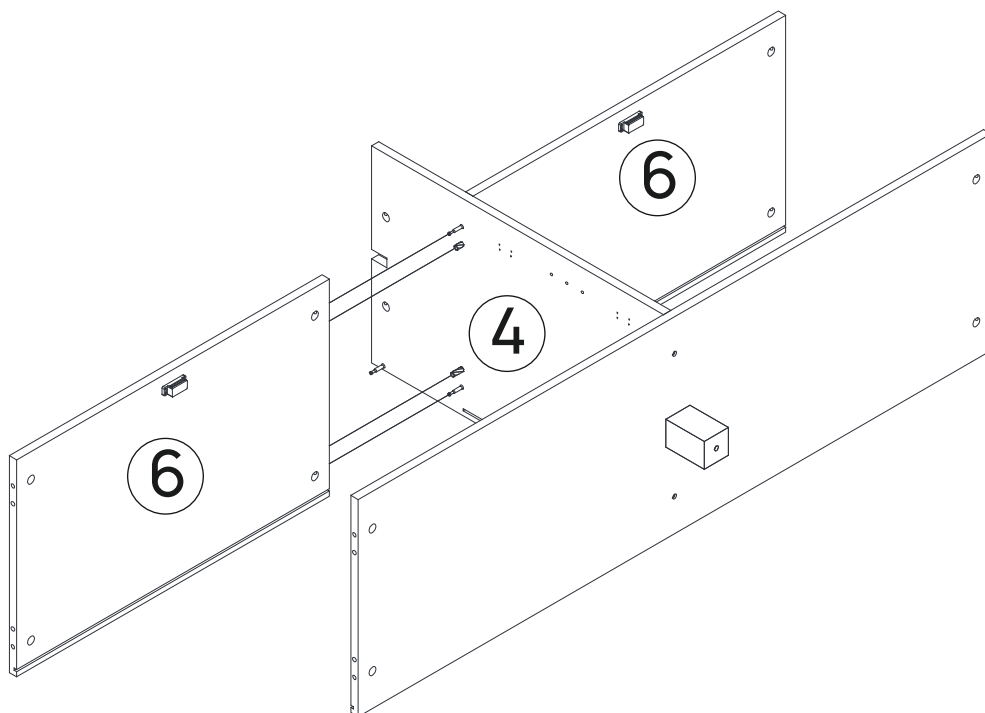
Step 7



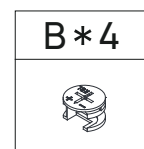
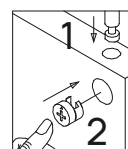
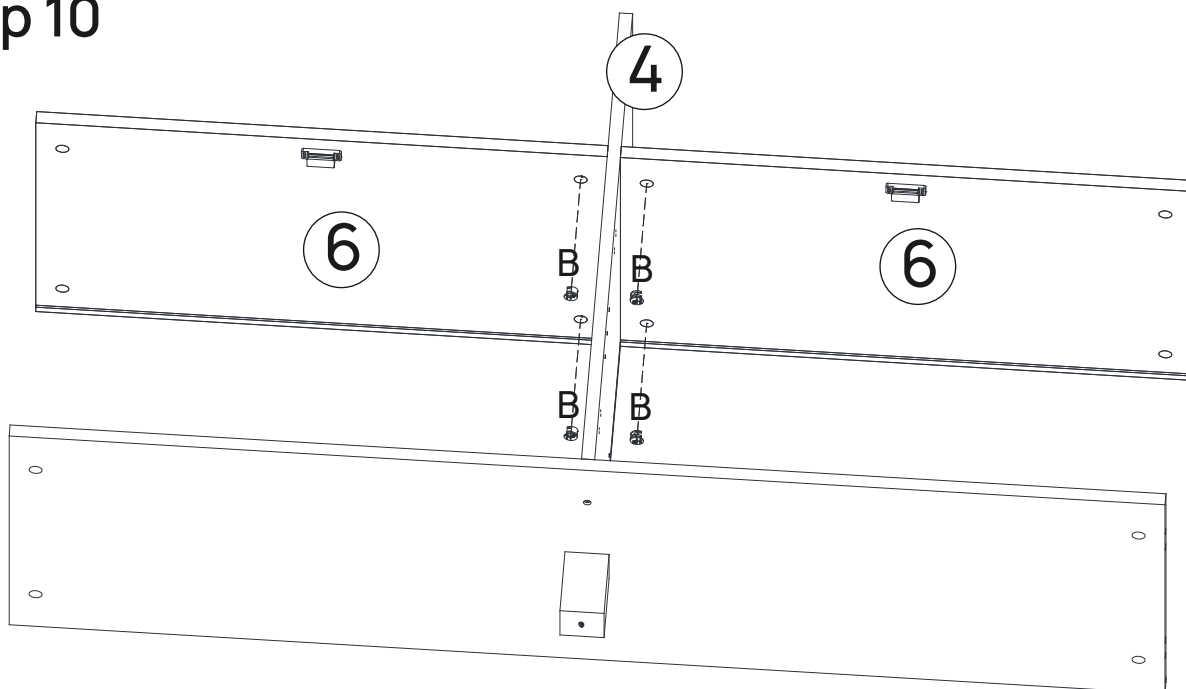
Step 8



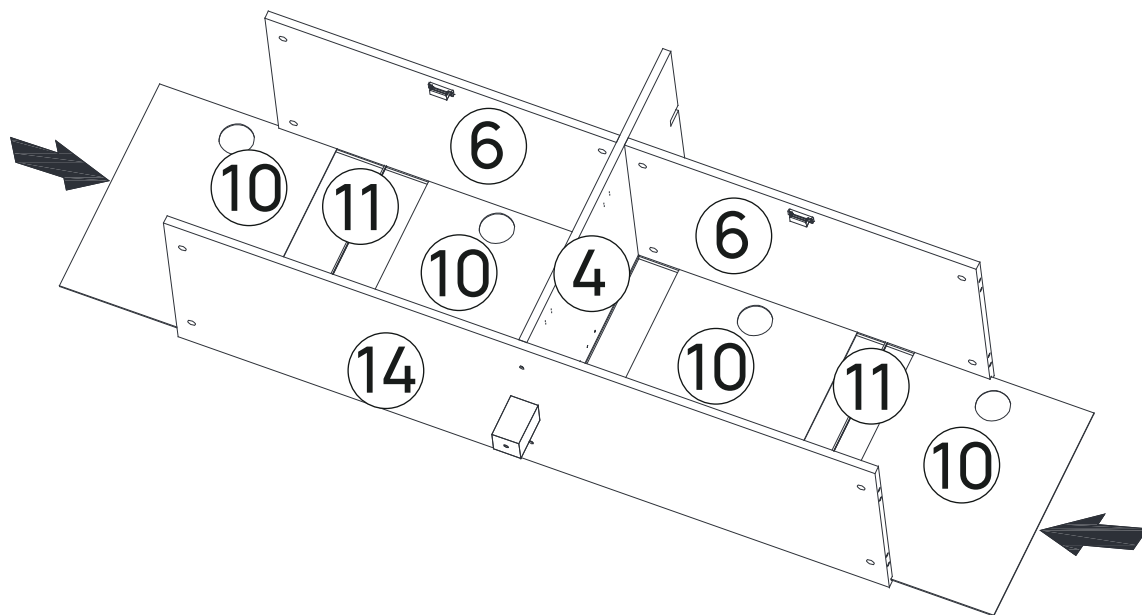
Step 9



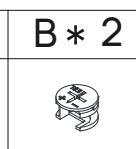
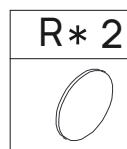
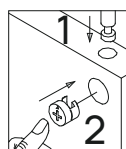
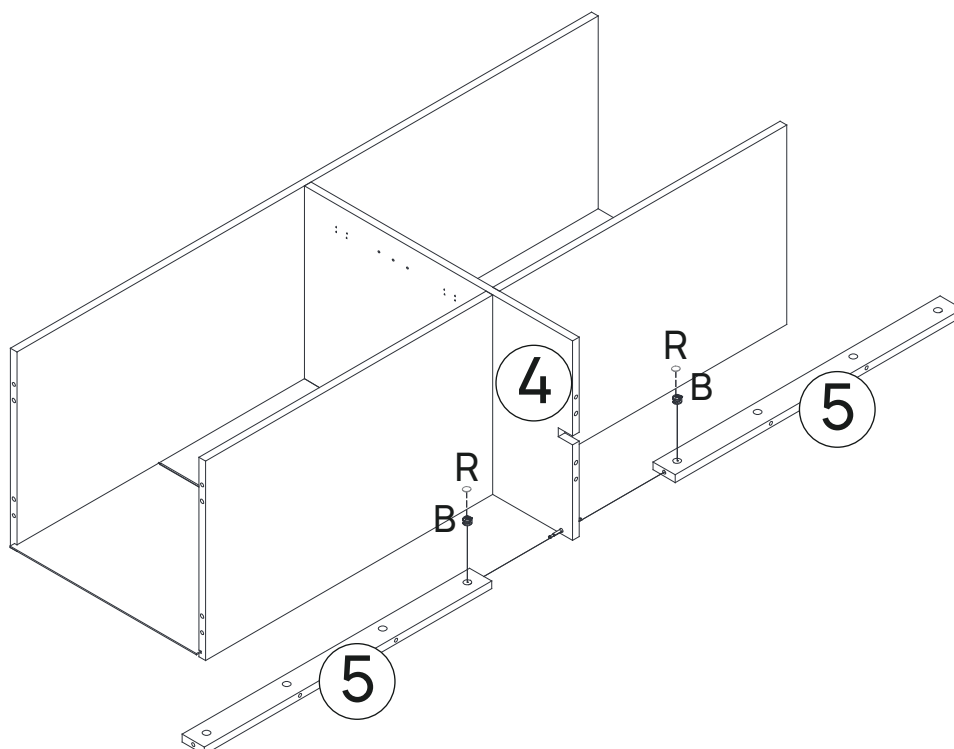
Step 10



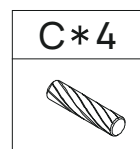
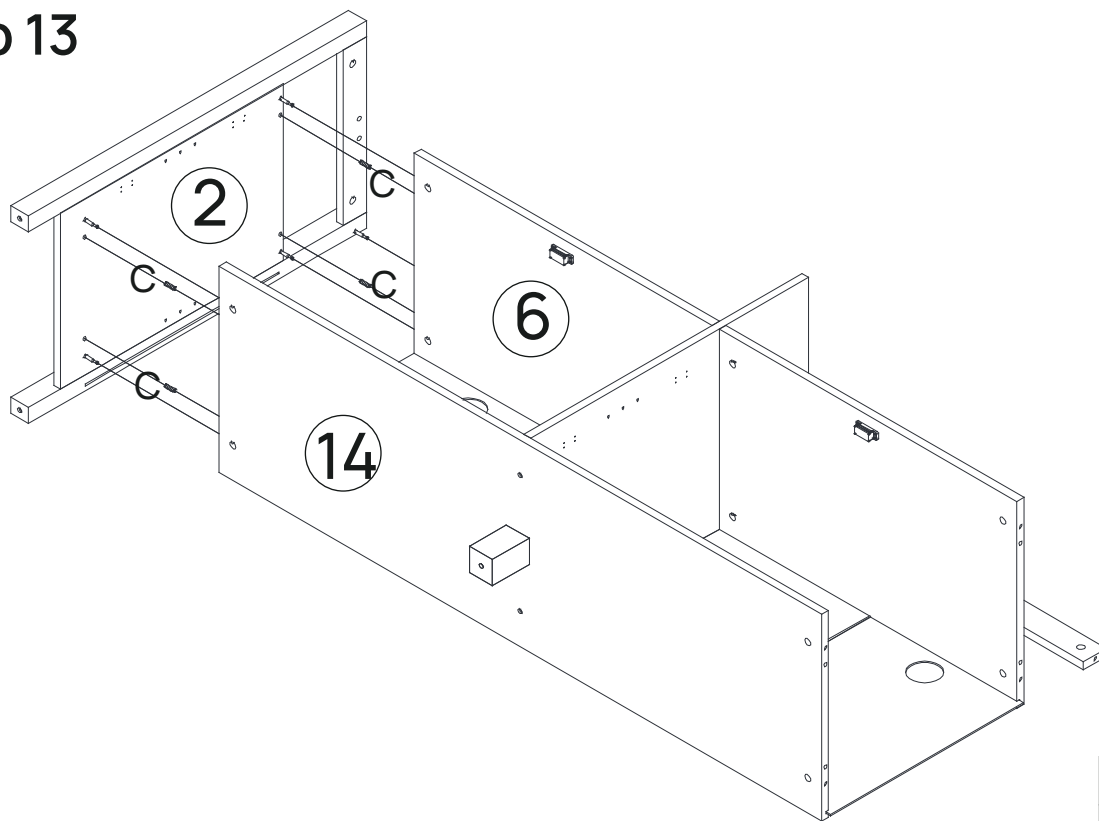
Step 11



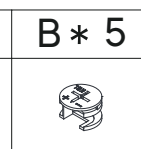
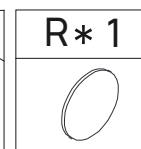
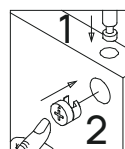
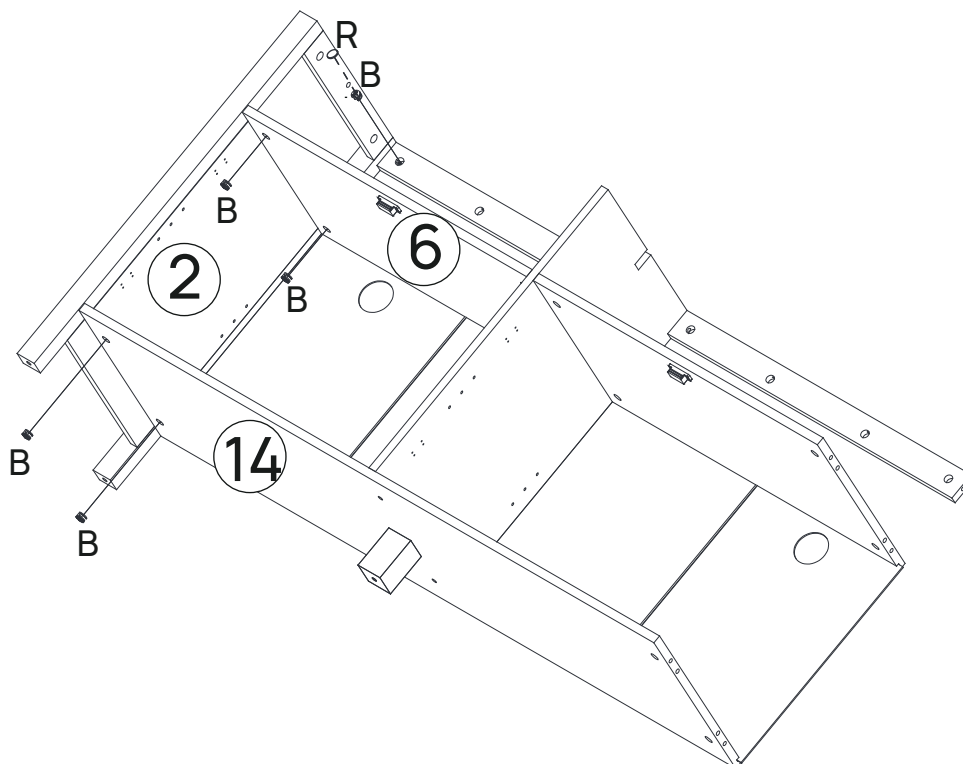
Step 12



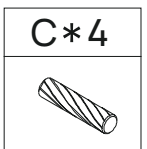
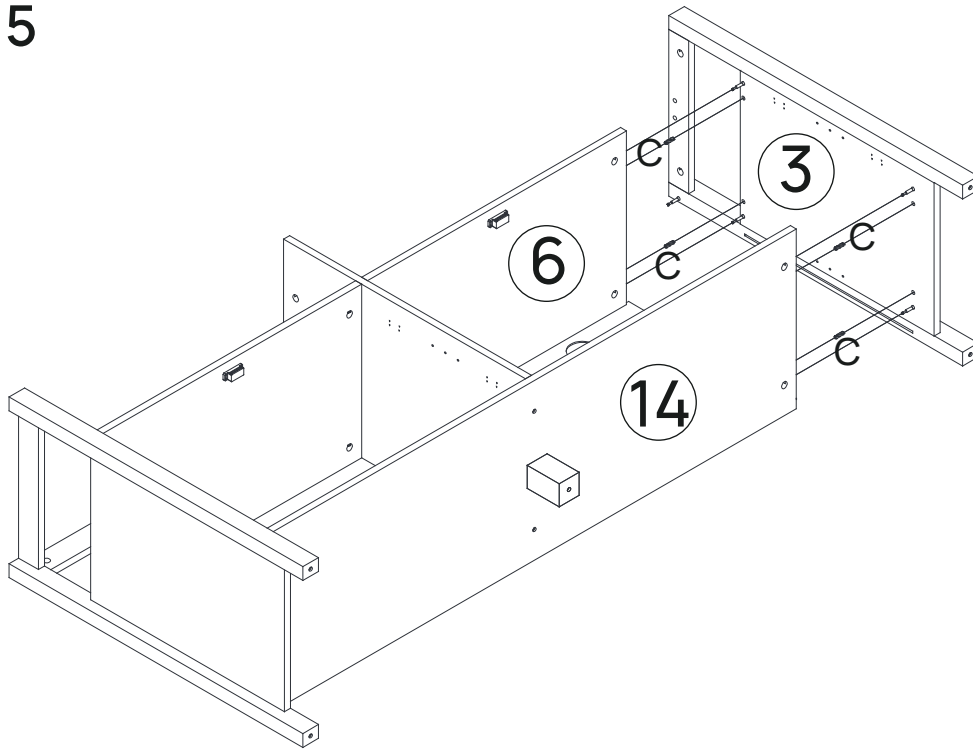
Step 13



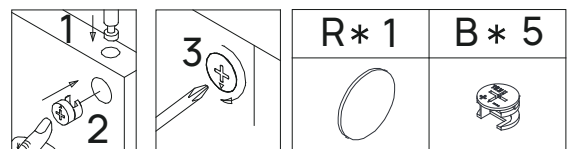
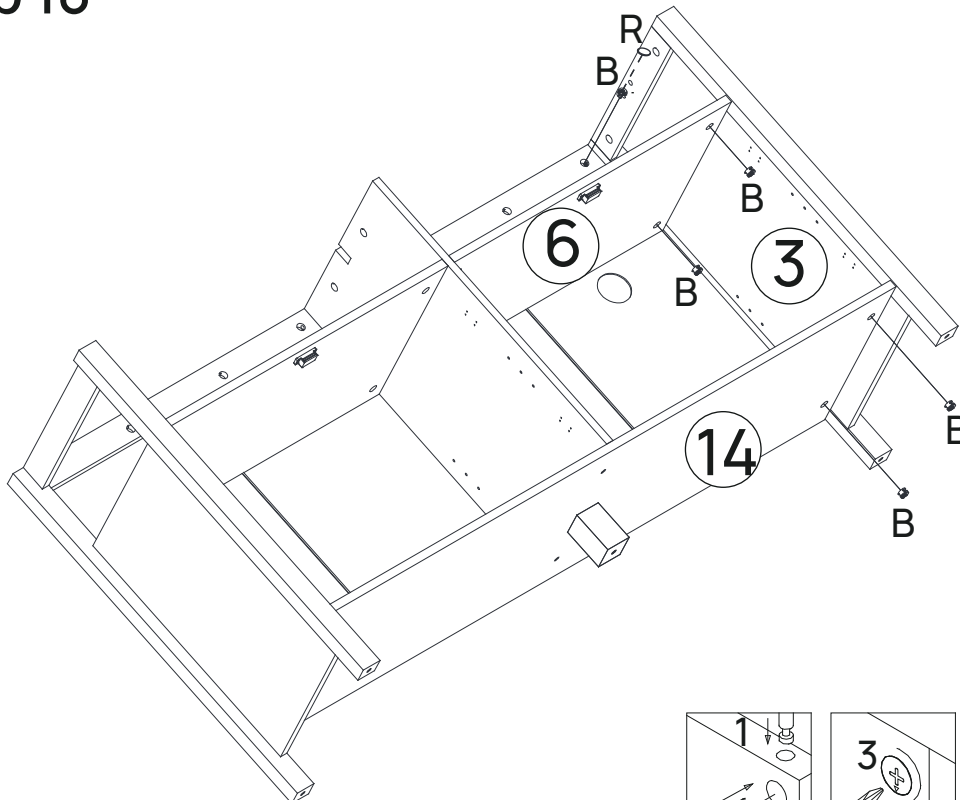
Step 14



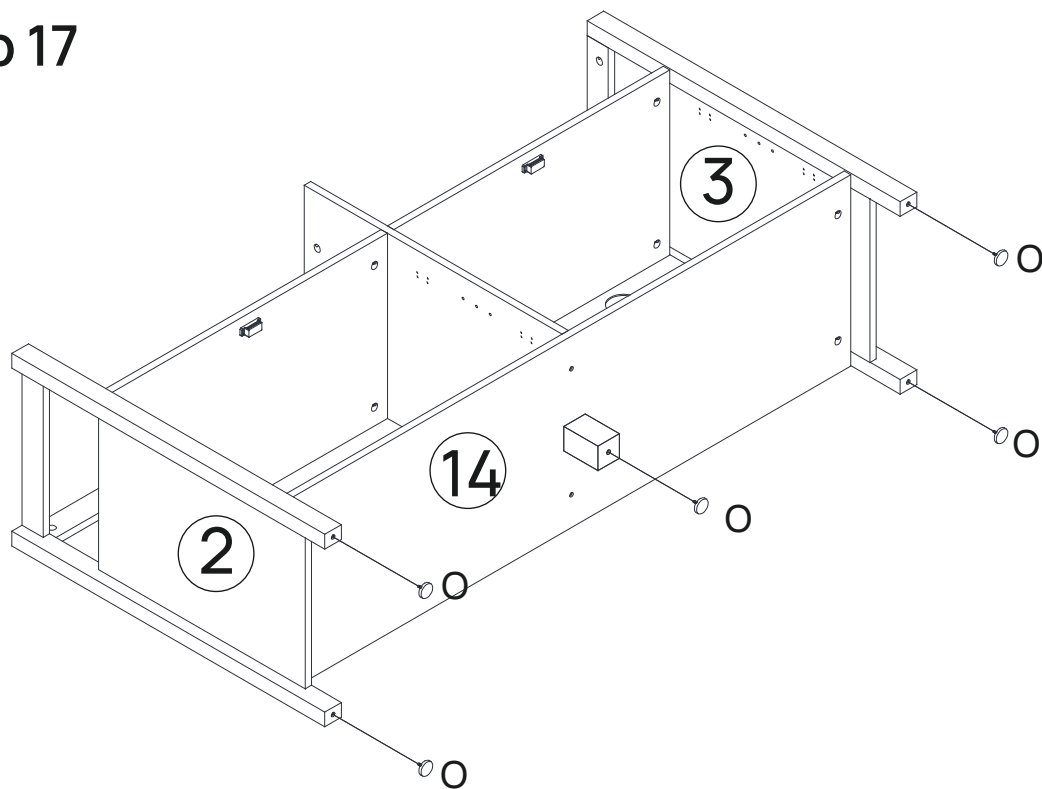
Step 15



Step 16



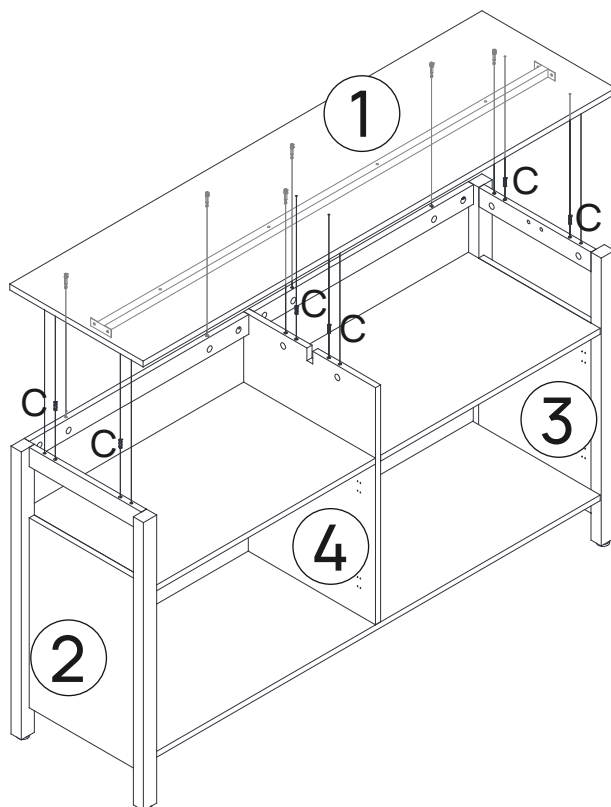
Step 17



O*5



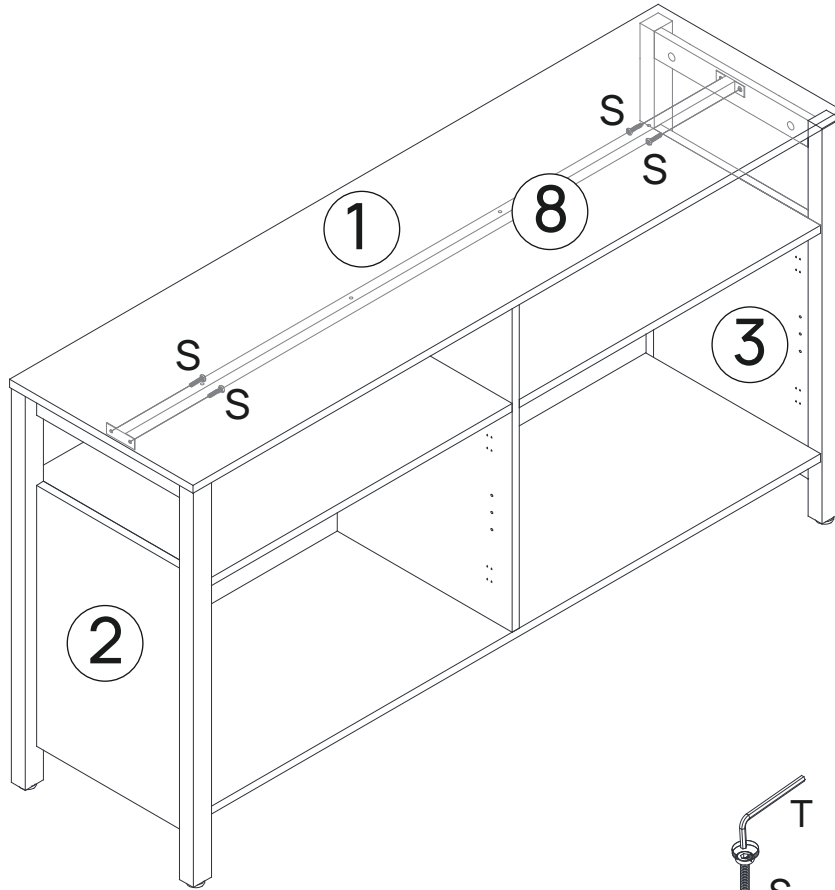
Step 18



C*6

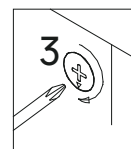
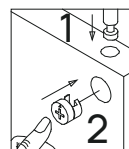
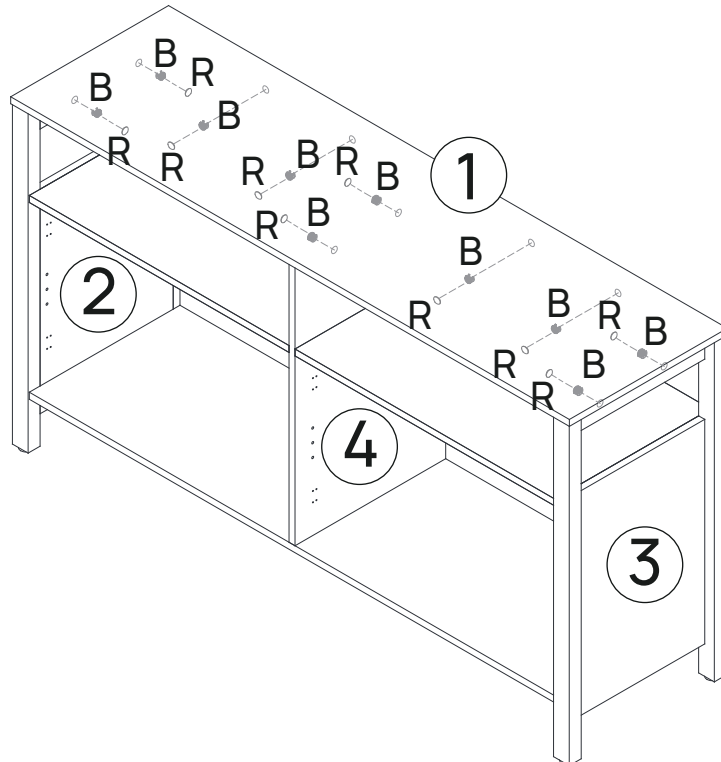


Step 19



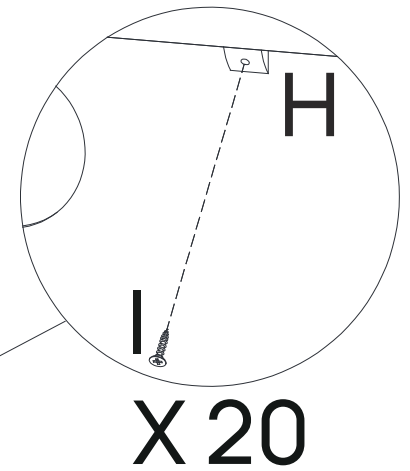
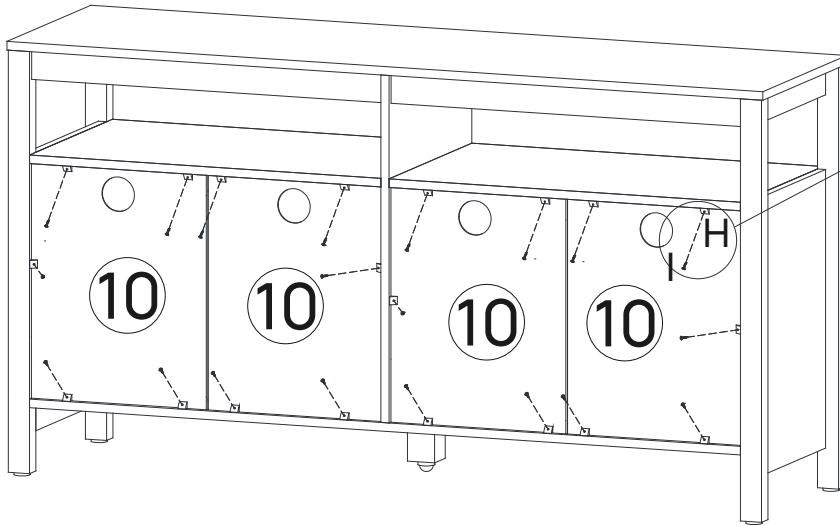
T*1	S*4

Step 20



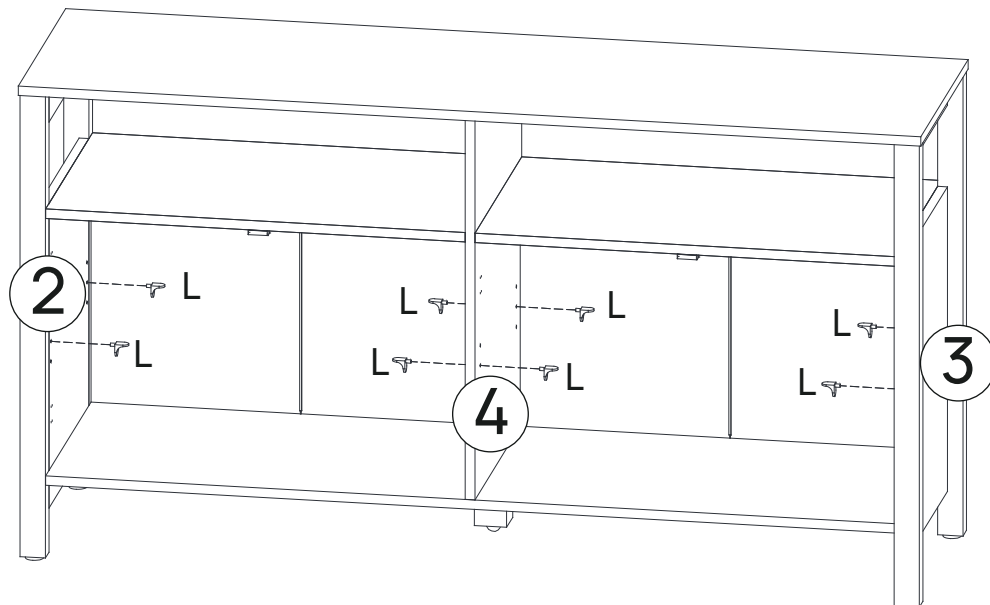
R*10	B*10

Step 21



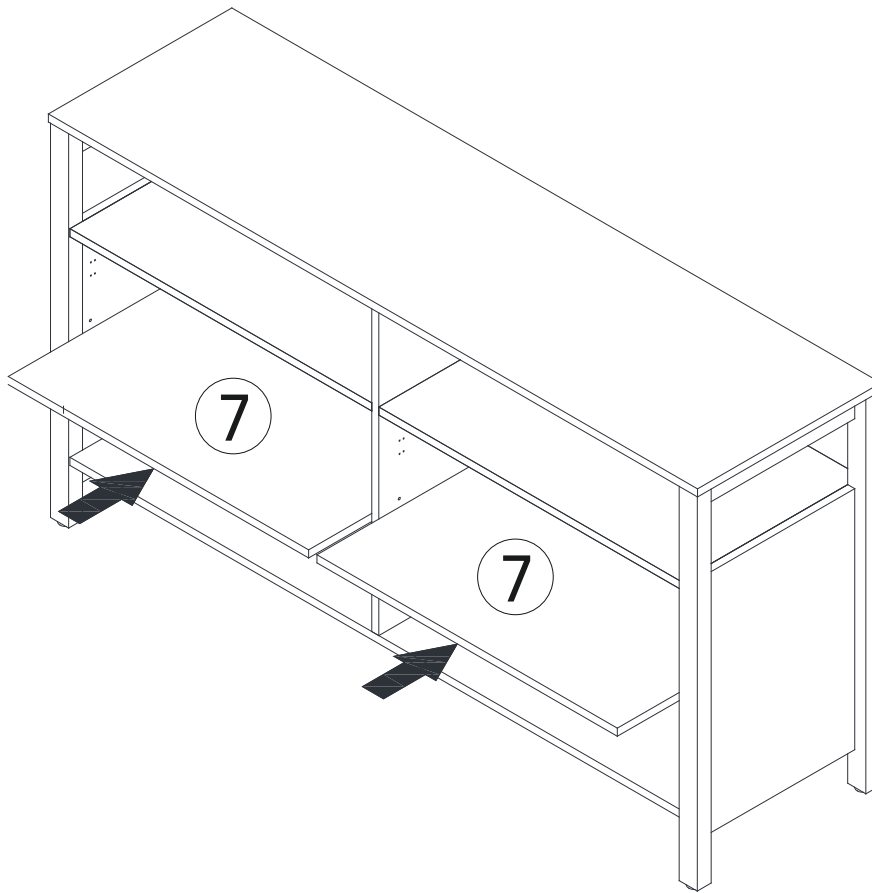
H* 20	I * 20

Step 22

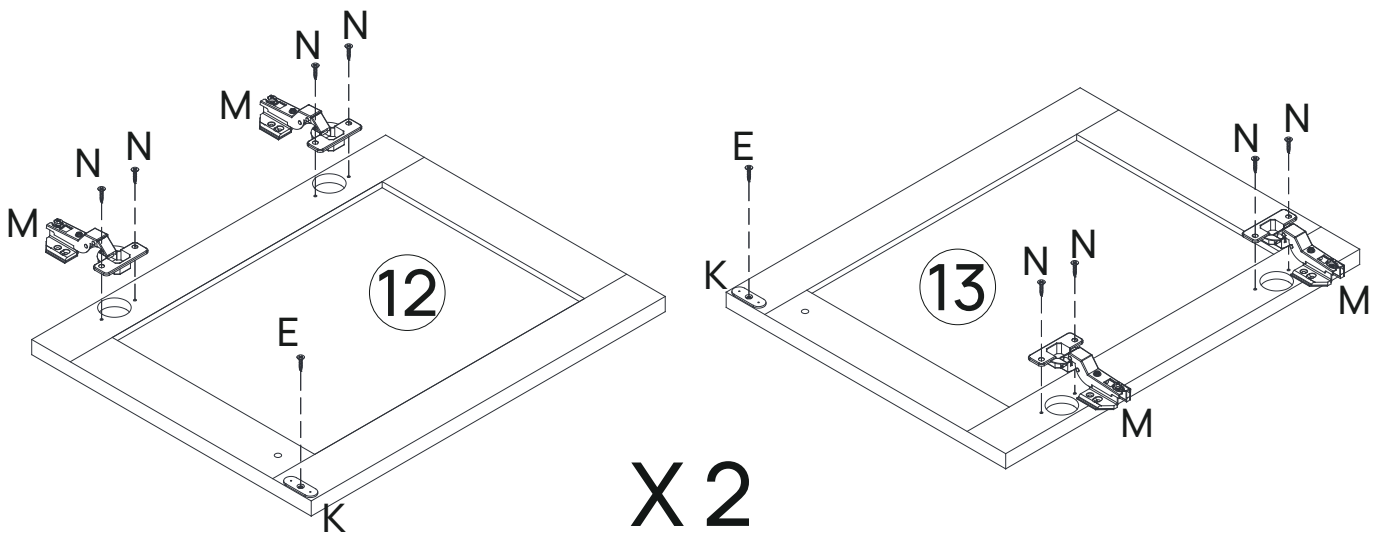


L * 8





Step 23



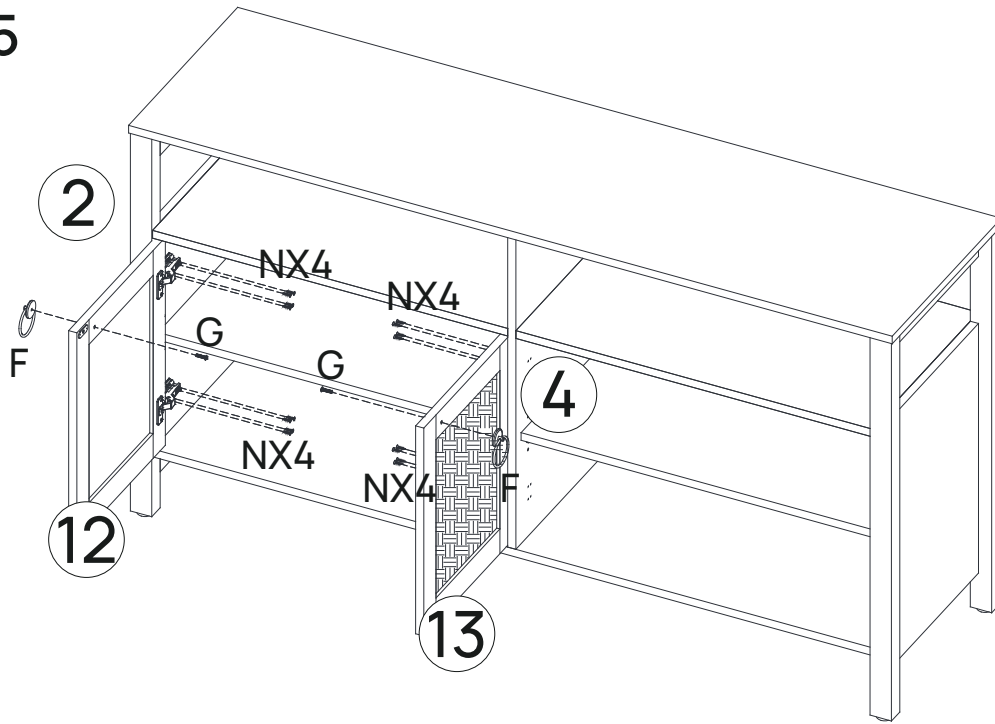
Step 24

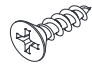




X 2

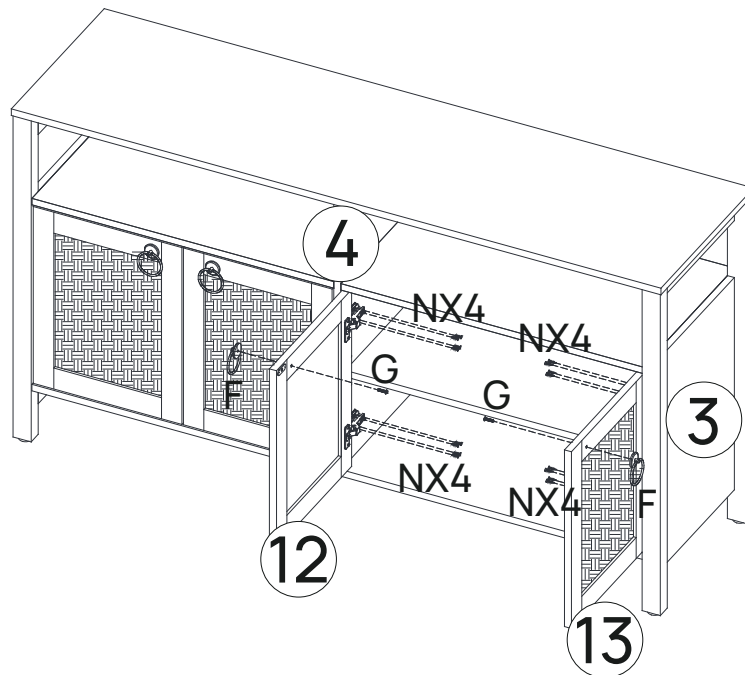
N*16	M*8	K*4	E*4
			

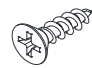


Step 25



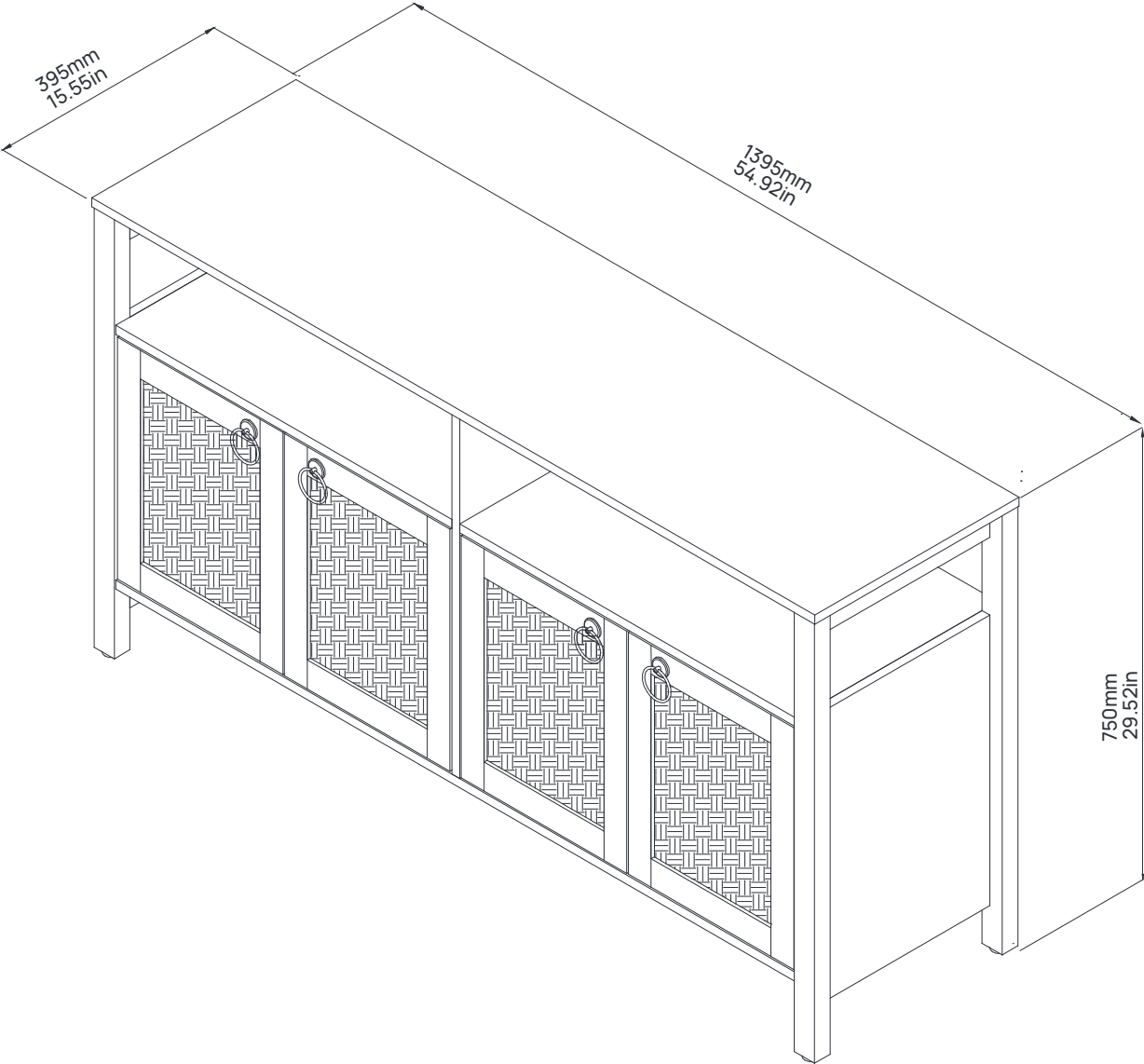
N*16	G*2	F*2
		

Step 26



N*16	G*2	F*2
		

Step 27

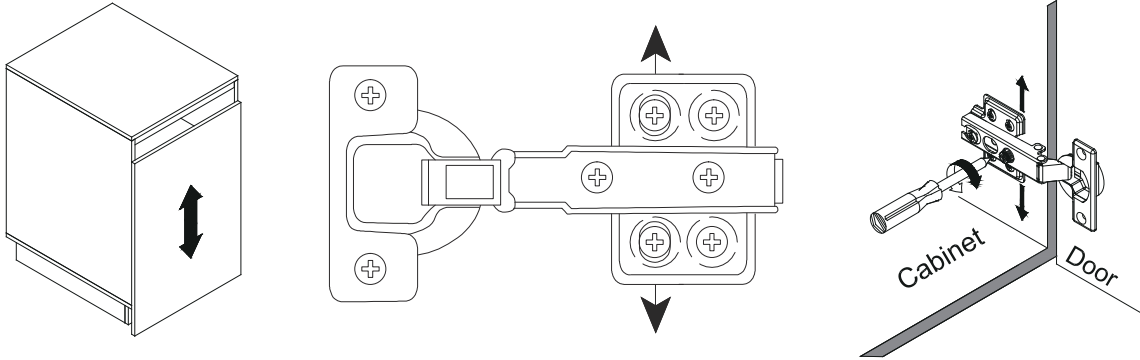


Final assmebly

Cabinet Door Adjustment Instructions

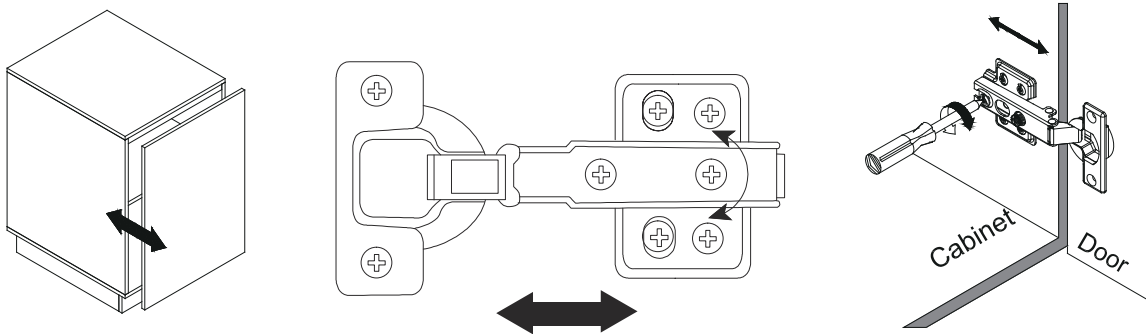
Height adjustment:

- Locate the height adjustment screws on the hinge.
- Use the Phillips screwdriver to either tighten or loosen the screws to raise or lower the cabinet door as desired.



Side-to-side adjustment:

- If the cabinet door needs to be moved closer to or away from the cabinet frame, locate the side-to-side adjustment screws on the hinge.
- Use the Phillips screwdriver to adjust these screws and gradually move the door in the desired direction.



Depth adjustment (if applicable):

