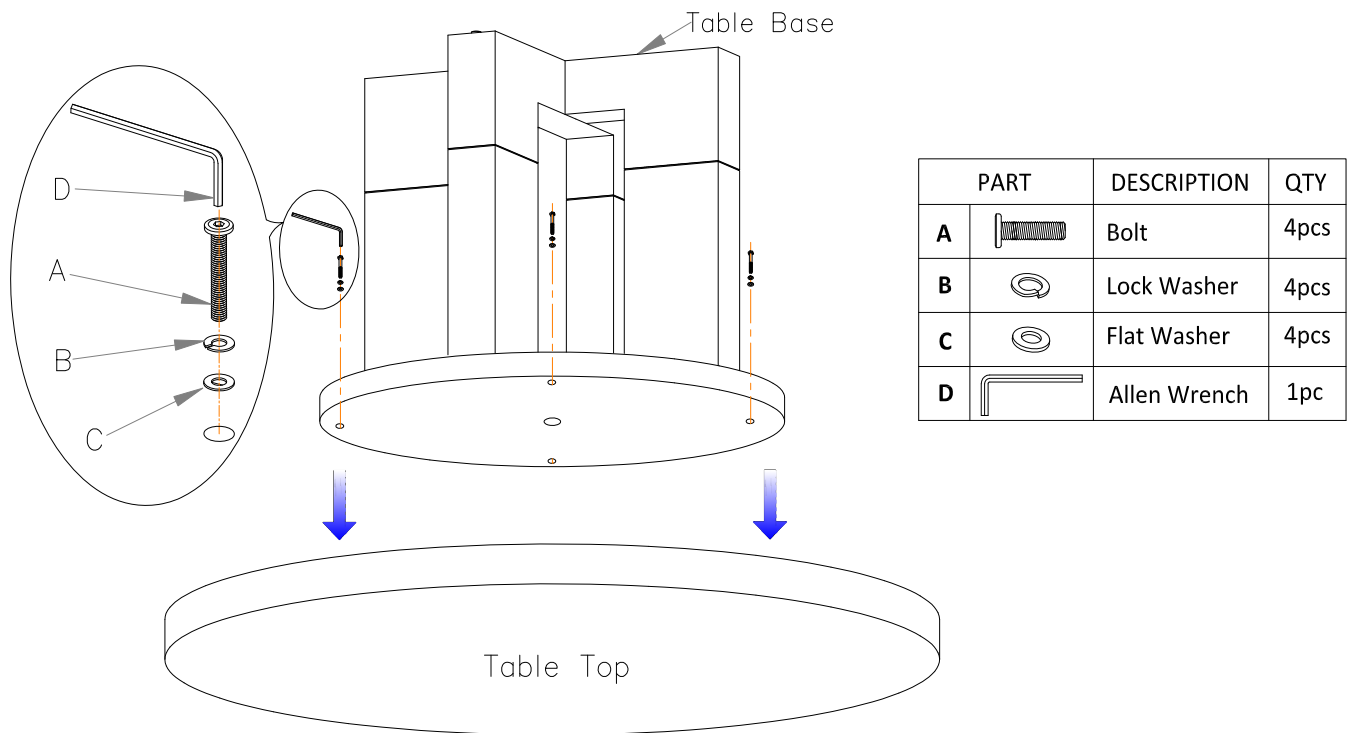


ARTISTICA®

— HOME —

ASSEMBLY INSTRUCTIONS

2240-870C Vérité Round Dining Table



1. Place Table Top upside-down on flat, clean, non-marring surface.
2. Position Table Base on Top so that holes in Base align with holes in Top.
3. Use Allen Wrench (D) to attach Base to Top with (4) of each: Flat Washers (C), Lock Washers (B), and Bolts (A). Securely tighten all hardware.
4. Return assembled table to its upright position and place in desired location.

For additional consumer assistance, please contact your local Artistica Home dealer or our Customer Services Department at 1-336-474-5300, Monday-Friday, 8-5 Eastern.