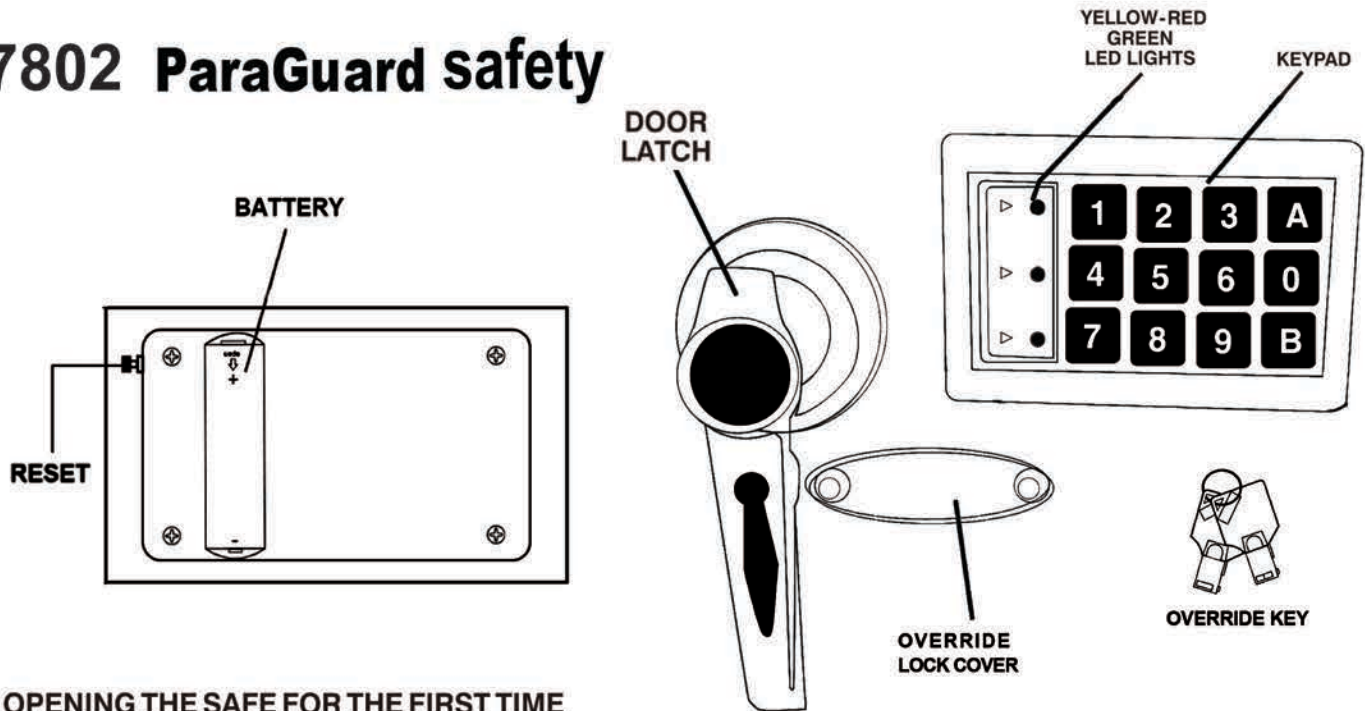


7802 ParaGuard safety



OPENING THE SAFE FOR THE FIRST TIME

Open the override lock cover, insert the override key and turn counter-clockwise until it stops. Next turn the handle clockwise to open the safe.

INSTALLING BATTERIES

Open the battery compartment cover at the rear of the door. Install the batteries as shown on diagram (4 AA batteries). Close the battery compartment cover.

SETTING AND CHANGING PERSONAL CODE

1. Open the door and press the red button at the rear of the door. The yellow light will flash.
2. Set a personal code, input a 3 to 8 digit set of numbers.
3. Press "A" or "B" to confirm.

The yellow light will turn off, indicating the code is entered into successfully.

Use the same procedure to change the code.

USING YOUR PERSONAL CODE TO OPEN THE SAFE

Input your 3~8 digit personal code then press "A" or "B" to confirm. When the green light flashes, turn the handle clockwise to open the safe.

WRONG CODE PROTECTION

If you input a wrong code, the safe will not open. If 3 consecutive inputs of the wrong code are entered, the keypad will lock for 20 seconds. If 3 consecutive inputs of the wrong code again, the system will lock for 5 minutes. Operation can resume after the five minute period.

EMERGENCY SYSTEM

If you forget your code or the batteries expire, you can use the emergency system to open the safe. Open the override lock cover, insert the override key and turn counter-clockwise to the end. Turn the handle clockwise to open the safe.

LOW VOLTAGE

When you open the safe the red light is flashing, this indicates system is in low voltage. Replace the expired batteries with fresh AA alkaline batteries.

IMPORTANT WARNING

DO NOT keep your emergency override keys inside of the safe