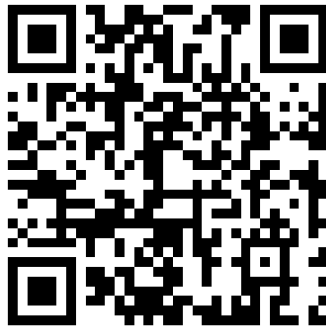


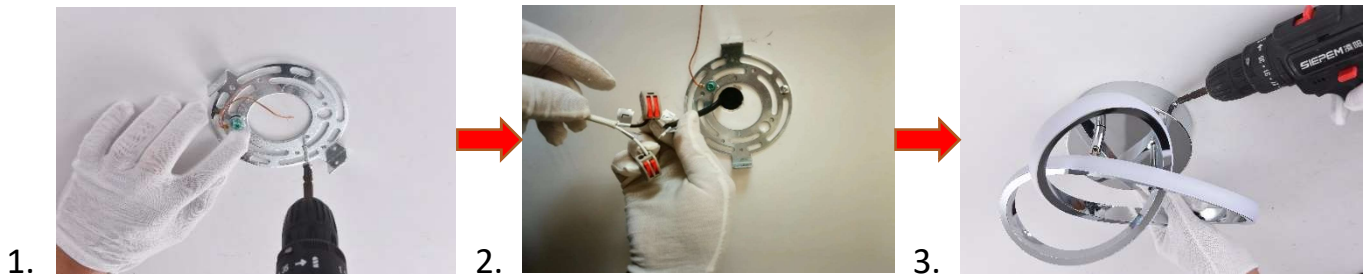
# ITEM NO.#2375 INSTALLATION INSTRUCTIONS

Notice Before Installation:

1. ✘ Not compatible with a dimmer switch. ✔ Please use a regular ON/OFF wall button switch.
2. Contact us via Order Page if any damaged/ missing parts/ other questions. (Reply within 6 hours/Free Replacement Parts/Partial Refund)
3. Although the installation is simple, for safety reasons, we recommend having a professional electrician complete the installation.
4. Please scan the QR code to watch the Installation Video.



Specific Steps:



## **Step 1: Mount the hanging plate to the ceiling.**

You need some expansion bolts and screws from the parts kit.

## **Step 2: Connect the driver of the light fixture to the wires in the ceiling .**

We have upgraded the wiring system so that you don't have to distinguish between live and neutral wires , you just need to connect them separately.

## **Step 3: Use screws and nuts to fix the chassis.**

Installation is much easier with 2 people.