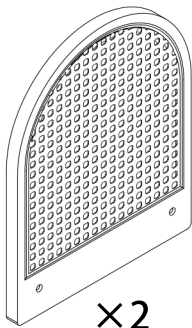
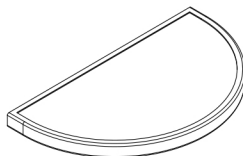


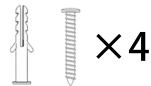
# ASSEMBLY INSTRUCTION



×2



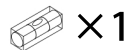
×2



×4



×4



×1



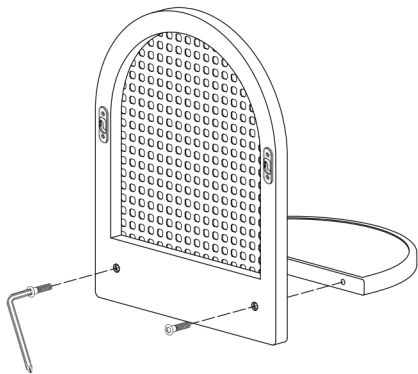
×1



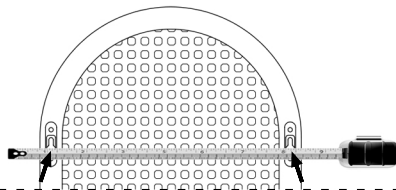
self-provided tools drill bit: 1/4" (6mm)

## Installation Steps

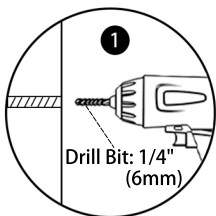
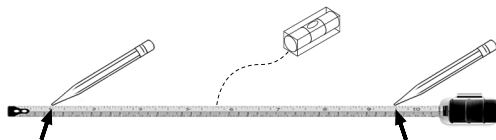
Use the screwdriver to lock the screws tightly.



Measure the distance with a ruler.



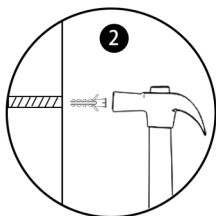
Mark the place where you want to install the shelf and check with a level.



1

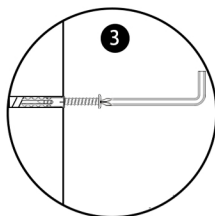
Drill Bit: 1/4"  
(6mm)

Drill 6 mm holes



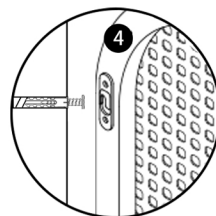
2

Punch the  
expansion nails



3

Screw in the screws



4

Hang the shelf