



## SINK SPECIFICATIONS

SILGRANIT® II

BLANCO PRECIS™ EQUAL DOUBLE BOWL Undermount

Models 516319, 516320, 516321, 516322, 516323

### FEATURED MODEL

516321 Biscuit, 8" & 8" bowl depths

### ADDITIONAL MODELS

516319 Metallic Gray, 8" & 8" bowl depths

516320 White, 8" & 8" bowl depths

516322 Anthracite, 8" & 8" bowl depths

516323 Cafe Brown, 8" & 8" bowl depths

### FEATURES

BLANCO is the world leader in research and development of sink materials. Our new SILGRANIT II delivers features that have been independently tested and far surpass our competition.

Ceramic micro hollow balls in our formula create a super smooth, water-repellant surface, making SILGRANIT II the easiest-to-clean sink material available.

SILGRANIT II is:

- Easy-to-clean
- Extremely durable and scratch-resistant
- Stain-resistant
- Non fading
- Extremely hygienic and suitable for food preparation
- 100% made by BLANCO, not imported or sourced.

BLANCO'S 7 patents on SILGRANIT II make us the recognized leader in the marketplace.

### OPTIONAL ACCESSORIES

516363 Stainless grid large bowl

513520 Stainless colander

218340 Glass cutting board

### CODE/STANDARDS COMPLIANCE

ANSI Z124.6-97

IAPMO/UPC listed

### WARRANTY

BLANCO'S SILGRANIT II Series sinks feature a LIMITED LIFETIME WARRANTY to be free of all manufacturing defects under normal use. See our complete warranty for details.

While BLANCO endeavors to provide accurate information, all dimensions are nominal, cannot be guaranteed, and are subject to change or cancellation. BLANCO assumes no responsibility for use of superseded or voided specifications.

### JOB INFORMATION

Job Name: \_\_\_\_\_

Contact: \_\_\_\_\_

Date Specified: \_\_\_\_\_

Specifier: \_\_\_\_\_

Contractor: \_\_\_\_\_

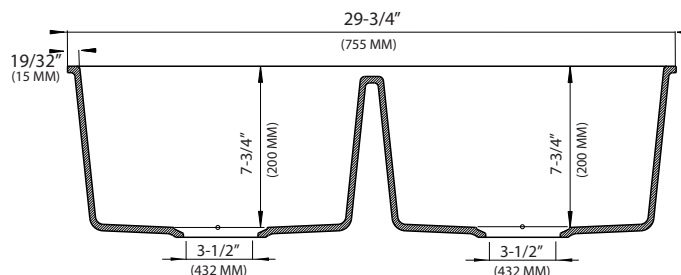
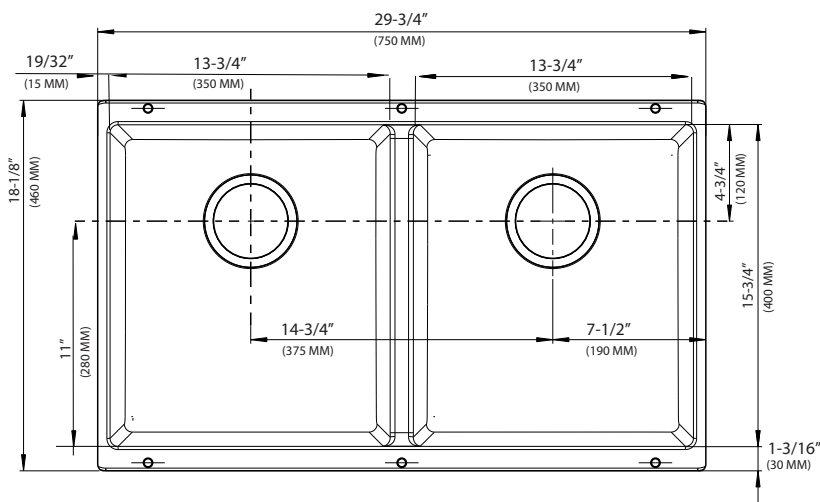


Model 516321 Shown

### NOMINAL DIMENSIONS

OVERALL	CUTOUT SIZE	BOWL DEPTH LEFT	BOWL DEPTH RIGHT	DRAIN DIAMETER
29-3/4"x 18-1/8"	—	8	8	3-1/2"

DXF cutout templates available on our website.



BLANCO

800.451.5782

www.blancoamerica.com

© 2009 BLANCO  
10/09