

Cadet FloWise Elongated Pressure-Assisted Toilet
1.6 gpf / 6.0 Lpf

- 2462.016**
 - Vitreous china
 - Low-consumption (1.6 gpf/6.0 Lpf)
 - EverClean® surface inhibits the growth of stain- and odor-causing bacteria, mold, and mildew on the surface
 - Elongated bowl
 - Pressure-assisted siphon jet flush action
 - Fully-glazed 2-1/8" trapway
 - 10 x 12" water surface area
 - Metal chrome trip lever
 - Close-coupled flushometer tank*
 - Speed Connect® tank/bowl coupling system
 - 2 bolt caps
 - 100% factory flush tested
 - 12" Rough-in
- 3481.016** Bowl with two bolt caps
- 3481.001** Same as above, Universal Bowl
- 4142.016** Tank complete with coupling components



Nominal Dimensions:
768 x 521 x 743mm
(30-1/4" x 20-1/2" x 29-1/4")

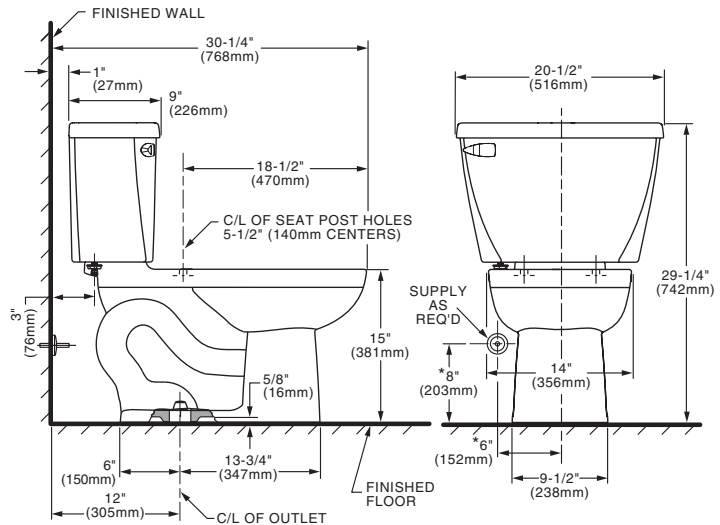
Fixture only, seat and supply by others

Recommended working pressure range
25 psi - 80 psi

- Alternate Configurations Available:**
- 4142.600** Tank and tank cover only with tank cover locking device
 - 4142.800** Tank and tank cover only with right hand trip lever
 - 4142.900** Tank complete with right hand trip lever and tank cover locking device

Compliance Certifications - Meets or Exceeds the Following Specifications:

- ASME A112.19.2-2008 / CSA B45.1-08 for Vitreous China Fixtures



NOTES:
THIS COMBINATION IS DESIGNED TO ROUGH-IN AT A MINIMUM DIMENSION OF 305MM (12") FROM FINISHED WALL TO C/L OF OUTLET.
* DIMENSION SHOWN FOR LOCATION OF SUPPLY IS SUGGESTED.
SUPPLY NOT INCLUDED WITH FIXTURE AND MUST BE ORDERED SEPARATELY.
FOR ADDITIONAL INFORMATION REFER TO INSTALLATION INSTRUCTIONS SUPPLIED.

IMPORTANT: Dimensions of fixtures are nominal and may vary within the range of tolerances established by ASME A112.19.2-2008 / CSH B45.1-08. These measurements are subject to change or cancellation. No responsibility is assumed for use of superseded or voided pages.

To Be Specified:

- Color: White
- Seat: American Standard #550BA00B Transitional slow-close solid plastic closed front seat with cover
- American Standard #5259A65MT Cardiff Ever-Clean® slow-close solid plastic closed front seat with cover
- Alternate Seat:
- Supply with Stop: