



LOS FLEXI
CRAFTING YOUR HOME STORY

E5D / E5 / E6 / 956

Smart Toilet

User Manual



- www.losflexi.com
- cs@losflexi.com
- (+1) 662-502-5099

Table of contents

*Click a page number to navigate to the corresponding page.

Features List.....	3
Features Overview.....	4
For Different Use	5
LFE5 & LFE5D Toilet Info.....	6
LFE6 Toilet Info.....	7
LF956 Toilet Info.....	8
Remote Control.....	10
Function - Remote Control	12
Function - Sensor Control.....	14
Clean & Maintenance	15
Troubleshooting.....	17
Limited Warranty Coverage.....	18

Los Flexi Smart Toilet Collection



LFE5D

This smart toilet offers essential features in a sleek, simple design, delivering efficiency and hygiene for those seeking a practical, no-frills bathroom upgrade.



LFE5

Upgrade your bathroom with this smart toilet, offering advanced features that combine comfort, convenience, and modern design for a seamless, hygienic experience.



LFE6

This smart toilet brings luxury and technology together, with advanced features and a stunning starlight ambience, transforming your bathroom into a sophisticated, high-tech retreat.



LF956

Ideal for families, this smart toilet features dual cleaning modes for adults and children, UV sterilization, and ambient lighting, blending hygiene, comfort, and stylish design for every bathroom need.



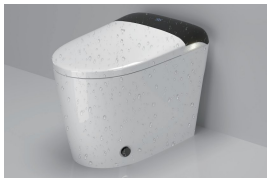
		LFE5D	LFE5	LFE6	LF956
CLEAN	Rear Wash	•	•	•	•
	Feminine Wash	•	•	•	•
	Child Wash	/	/	/	•
	Oscillating Wash	•	•	•	•
	Unlimited Continuous Wash	•	•	•	•
	Massage Function	•	•	•	•
COMFORT	Nightlight	•	•	•	•
	Heated Seat	•	•	•	•
	Drying Flush	•	•	•	•
	Air Dryer	•	•	•	•
	Automatic Open/Close Lid	/	•	•	•
	Auto Pre-Wetting	•	•	•	•
	Off-Seat Auto Flush	•	•	•	•
	Adjustable Water Temperature	4 Level	4 Level	4 Level	4 Level
	Adjustable Water Pressure	•	•	•	•
	Adjustable Seat Temperature	4 Level	4 Level	4 Level	4 Level
	Adjustable Air Temperature	4 Level	4 Level	4 Level	4 Level
Adjustable Nozzle Position	•	•	•	•	
HYGIENE	Self-Cleaning Nozzle	•	•	•	•
	UV Nozzle Sanitization	•	•	•	•
	Automatic Deodorization	•	•	•	•
ADVANCED FEATURES	Foot Touch Sensing	•	•	•	•
	Remote Control	•	•	•	•
	Side Panel Control	•	•	•	•
	LED Display Screen	•	•	•	•
	Battery-Operated Backup Flush	•	•	•	•
	Built-in Water Tank	•	•	•	•
Flushing Technology	Siphon	Siphon	Siphon	Siphon	



Features Overview



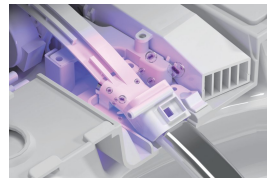
Built-in Water Tank



IPX4 Waterproof



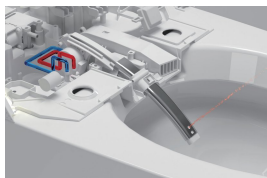
Built-in Deodorizing Cartridge



UV Nozzle Sanitization



Battery Backup Flush



Instant Warm Water



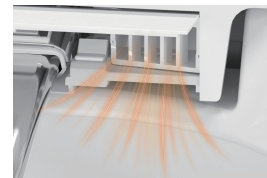
Comfort Heated Seat



Self-clean Nozzle



Multi-Function Wash



Warm Air Drying



Automatic Open/Close Lid



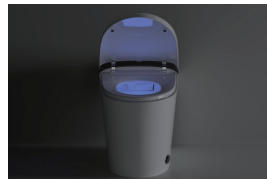
Foot Kick Flush



Foot Kick Open/Close Lid



Off-seat Auto Flush

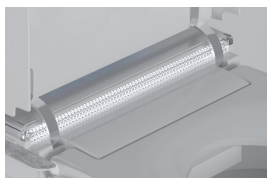


Night Light

*(For 956 only)



Removable Child Seat



Ambient Light



UV Sterilizer Light



NOTE

Image are for display purposes only.

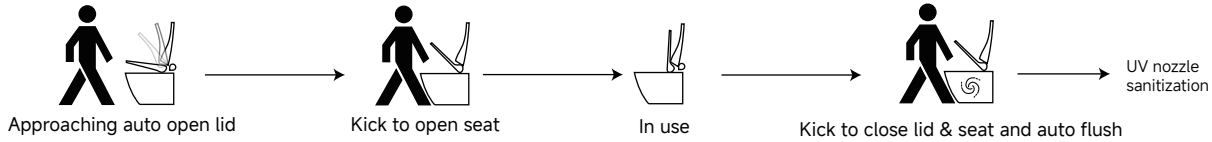
Follow these precautions:

- Keep the lid closed during use.
- Do not stare at or touch the UV light when it is active.

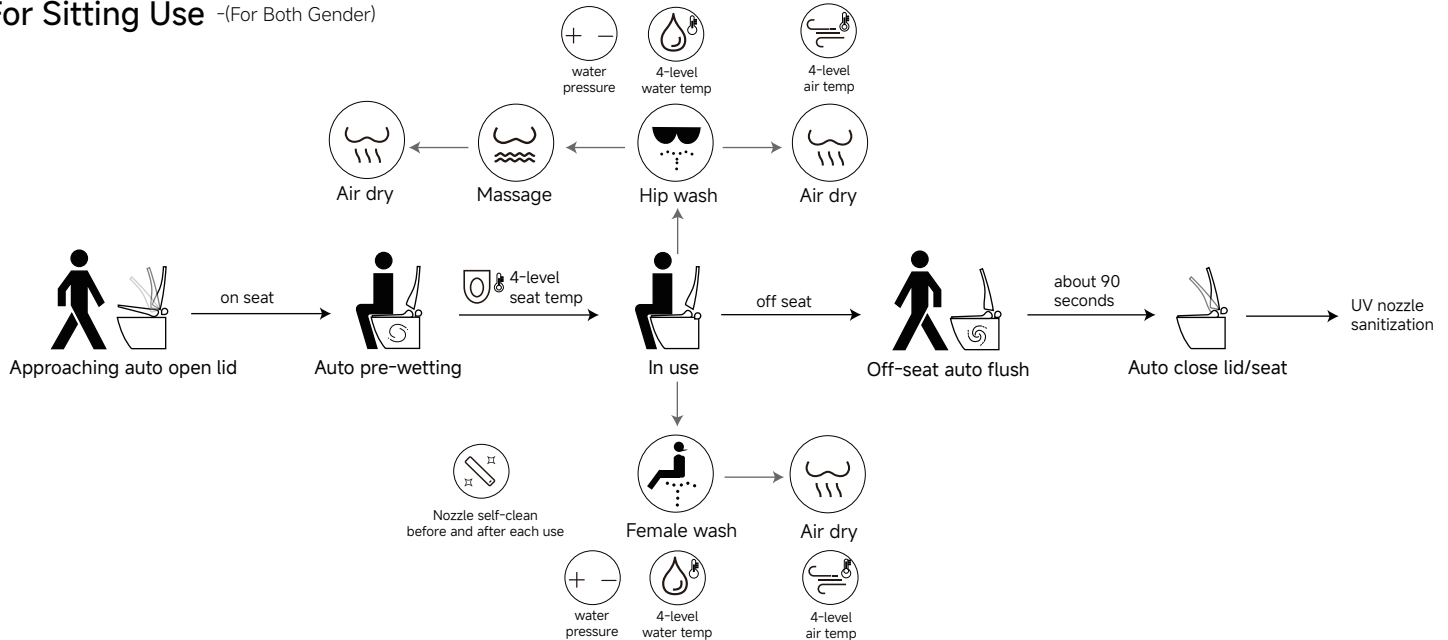
For UV Sterilization



For Standing Use -(For Male Urination)



For Sitting Use -(For Both Gender)

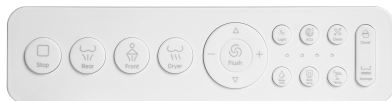


Note:

- All cleaning functions are optional and activated only when seated.
- For detailed function, please refer to the actual model purchased.



LFE5 & LFE5D



Note: For more remote control detail, please refer to Page [10](#).



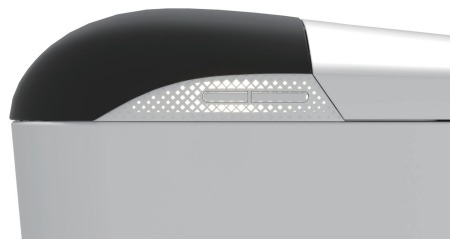
Warm Water
 • ON→Warm Water
 • OFF→Normal Temp



Water/Seat Temp Indicator



Heated Seat
 • ON→Warm Seat
 • OFF→Normal Temp



Flush button

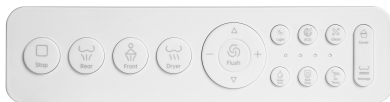
- Tap to flush, long press to switch on/off when off-seated.
- Long press flush button to air dry, tap to stop function when seated.
- Press to activate flushing during a power outage.

Multi function button

- Tap to turn on night light function when off-seated.
- Tap to start hip cleaning, long press to start female cleaning when seated.
- Tap to start moving cleaning when a cleaning function is active.



LFE6



Note: For more remote control detail, please refer to Page [10](#).



Warm Water
 • ON→Warm Water
 • OFF→Normal Temp



**Water/Seat
Temp Indicator**



Heated Seat
 • ON→Warm Seat
 • OFF→Normal Temp



**Side Knob
Control**

Flush/Stop function

- Long-press the knob while seated to activate air drying.
- Long-press the knob when not seated to turn the unit off.
- Press to activate flushing during a power outage.

Female wash/Moving function

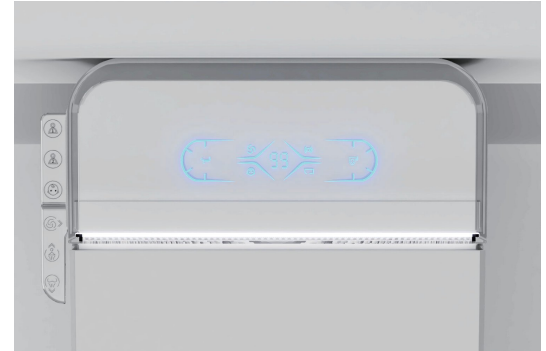
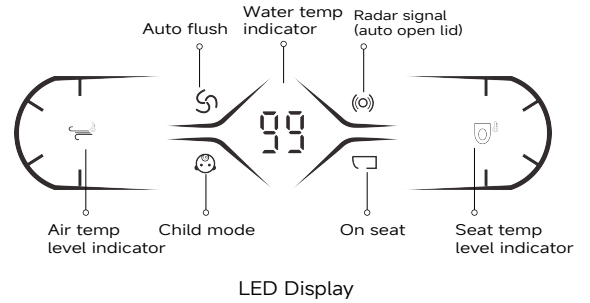
- Rotate the knob counterclockwise to activate the female wash.
- Rotate it again to activate the moving wash function.

Hip wash/Moving function

- Rotate the knob clockwise to activate hip wash.
- Rotate it again to activate the moving wash function.



LF956



Note: For more remote control detail, please refer to Page [11](#).



956 - Side Panel Control

User Mode 1:



- **Memorize settings:** Press and hold for 3 seconds to save current settings for hip wash (water/seat/air temp, water pressure).
- **Activate:** Press to use the saved hip wash settings.

User Mode 2:



- **Memorize settings:** Press and hold for 3 seconds to save current settings for female wash (water/seat/air temp, water pressure).
- **Activate:** Press to use the saved female wash settings.

Child Mode:



- **Enter mode:** Press and hold for 3 seconds to enter child mode.
- **Activate:** Press again to start child wash (warm water temp, gentle water pressure).

Flush:



- **Stop function:** Stop other functions when activated.
- **Flushing:** Press to flush when no other functions are active.
- **Power outage:** Press to activate flushing during a power outage.



Touch Handle



Front/Move:



- Gently lift the handle upwards for female wash.
- Lift again for move wash.



Rear/Move:

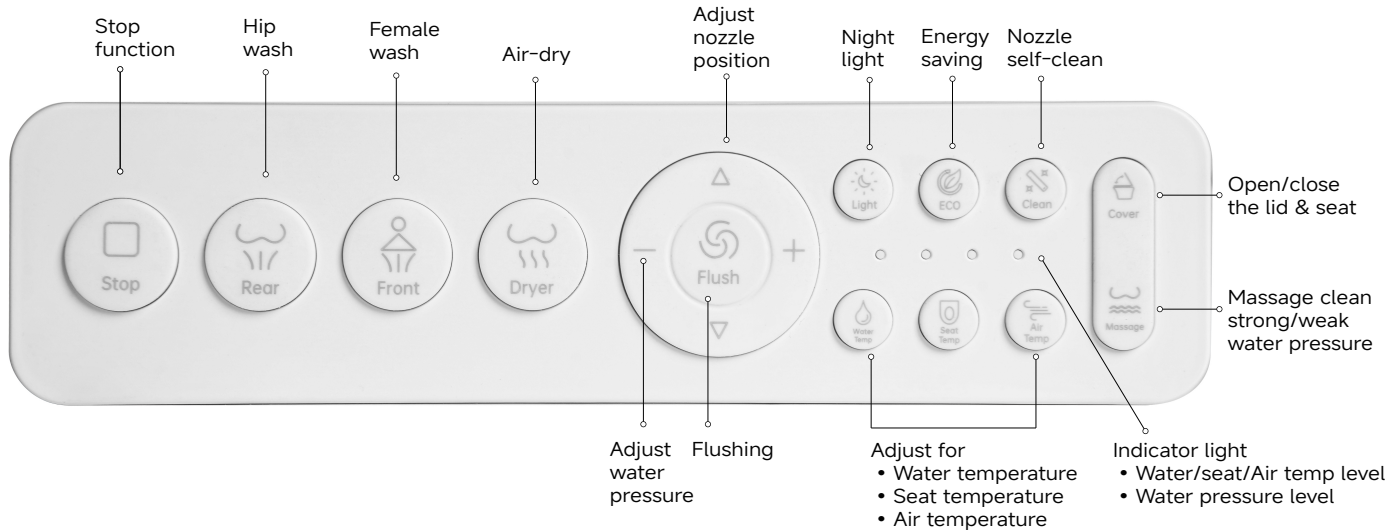


- Press down the handle for hip wash.
- Press again for move wash.



Remote Control

E5D / E5 / E6

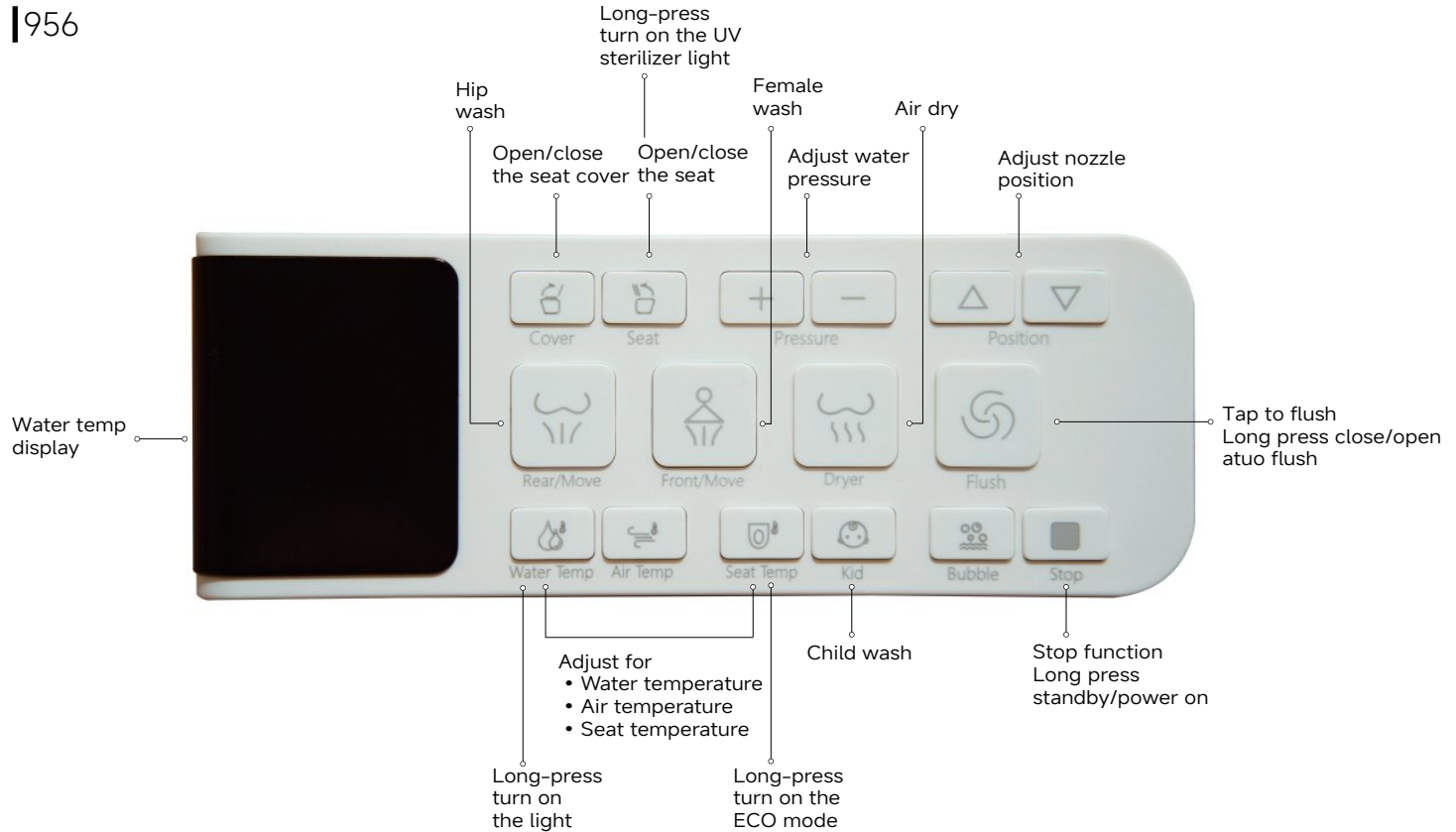


Note: "Cover" function on the E5D model does not support lid or seat flipping.



Remote Control

| 956



Note: The "Bubble" function does not support.



Function - Remote Control



For the cleaning function stop
Or use for save the function setting



Tap to flush



Tap to activate hip wash
Tap once to move the nozzle
Adjustable setting:

- Water temp-4 level
- Water pressure "+", "-", "
- Massage Function



Adjust the nozzle to move
forward or backward
+ Increase or decrease
- water pressure

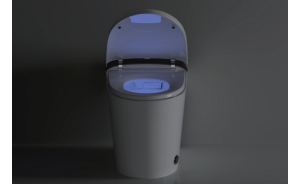


Tap to activate female wash
Tap once to move the nozzle
Adjustable setting:

- Water temp-4 level
- Water pressure "+", "-", "

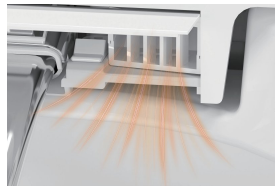


Tap to turn on the night light



Use for after cleaning
Adjustable setting:

- Air temp-4 level



Tap to activate energy-saving mode
The LED light will turn off
When unseated, seat temp keep low
Once seated, it returns to the set temp



Function - Remote Control



Clean

Tap to start nozzle auto cleaning



Nozzle Self-Clean



Cover

Tap to open or close the toilet lid and seat



Open/Close Lid & Seat



Massage

Massage Clean

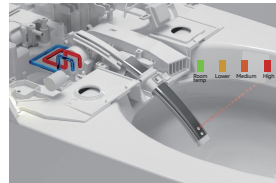
During cleaning, tap to activate the strong/weak massage function. It alternates strong and weak water pressure to aid defecation.



water Temp

Adjust Water Temp

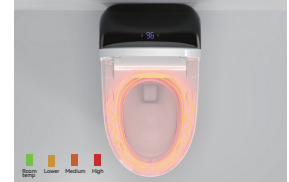
Tap to adjust water temp 4 level adjustable



Seat Temp

Heated Seat

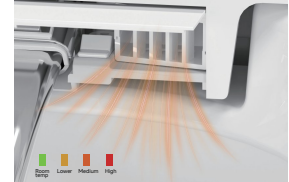
Tap to heated seat 4 level adjustable



Air Temp

Adjust Air Temp

Tap to adjust air dry temp 4 level adjustable



Child Wash

*(For 956 only)

Activate

Press and hold the "Child" button for 3 seconds. A beep sounds and the child icon lights up.

Cleaning

Tap the "Child" button to start a 90 seconds cleaning process (warm water, gentle pressure).

Drying

Press and hold "Flush" for 3 seconds to start 240 seconds low-temperature drying.

Exit

Manual: Press and hold the "Child" button for 3 seconds.

Auto: Exits automatically 10 minutes after use.

Note:

In Child Mode, only child cleaning and low-temperature drying are available. Other functions are locked.



Function - Sensor Control

Radar Sensor *For E5 / E6 / 956



Auto Open Lid

Auto open the lid when approaching

Seat Sensor *For E5D / E5 / E6 / 956



Auto Pre-Wet

Auto pre-wetting upon seating



Off-seat Flush

Auto flush when off-seat
Auto close the lid and seat after a moment

Foot Sensor | Basic *For E5D only



Foot Kick Flush

After use, Kick to flush

Foot Sensor | High Standard *For E5 / E6 / 956



Foot Kick Open Lid/Seat

Before Use:
Kick once to open the lid
Kick again to open the seat



Foot Kick Close Lid/Seat

After Use:
Kick to close the lid and seat
Auto-flush activates after a moment

Function - Setting

		E5D	E5	E6	956	
Radar Sonor	Auto Open Lid (Enabled by default)	/	Long press "Rear" to turn on/off.		Long press "Cover" to turn on/off.	
	Radar Distance	/	Long press "Cover". Display shows "0". Long press "Cover" again. Display shows "01". Press "▲▼" to select from 5 levels.		Long press "Cover". Press "▲▼" to select from 5 levels.	
Seat Sonor	Pre-Wet (Enabled by default)	Long press "Water Temp" to turn on/off.			Long-press the "Flush" to turn on/off.	
	Off-Seat Flush (Enabled by default)	Press "▲▼" to Set. Display shows "00" for ON. Display shows "01" for OFF.	Long-press "Flush". Then press the "▲" "▼" to turn on/off.			
ECO Mode		Press "ECO" to activate energy-saving mode. The LED light will turn off. When unseated, seat temp keep low. Once seated, it returns to the set temp.			Press "Seat Temp" to activate energy-saving mode.	
Factory Reset		Press "Stop" 5 times until a long beep sounds. Press "Dryer" once, 5 beeps confirm to reset. Long-press "Flush" then press "▲" or "▼" to turn on/off. Display shows "1" for ON. Display shows "0" for OFF.			Simply power off and restart to reset.	

Note:

- E5D model foot sensor function only supports flushing, and no auto lid opening and close.
- All function settings are based on the user being off the seat.



Clean & Maintenance

IMPORTANT SAFETY NOTICE

The product is an electronic appliance. Use caution during cleaning and maintenance to prevent water from entering the internal components.

Maintain Seat Sensor Area Cleanliness

- Do not allow foreign objects (such as seat covers or wraps) to cover or obstruct the sensor area.
- Dirt or debris adhering to the sensor may cause malfunction or improper operation.

Cleaning the Exterior Surfaces

- Always unplug the power cord before cleaning to prevent contact with the plug or water entering the socket.
- Wipe the surface with a soft, damp cloth. For stubborn stains, use a mild, neutral cleaner.
- Avoid harsh cleaners (e.g., bleach, benzene) and do not spray water or use a shower head to prevent electrical hazards.
- Wipe with a warm cloth to reduce static and prevent dust buildup.
- The toilet lid can be removed for easier cleaning between the lid and the ceramic body.

Cleaning the Nozzle

- With the seat unoccupied, press the "Self-Clean" button to extend and rinse the nozzle.
- Gently clean the nozzle with a soft-bristle brush or toothbrush to remove scale and debris.
(The self-clean process will stop automatically after 90 seconds. Press the "Stop" button to end the process early if needed.)
- Do not forcefully push or pull the nozzle during operation.

Freezing Prevention Measures

General Use: Automatic Heating

In cold winter, freezing water can damage the toilet. Keep the power plugged in to allow the system to automatically heat when the indoor temperature drops below 41°F.

※Failure to follow these precautions may result in malfunction.

Long-Term Storage: Drainage and Freezing Protection

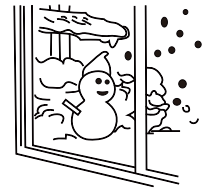
For extended periods of inactivity (e.g., business trips or vacations):

- 1) Close the water valve and flush to empty the tank.
- 2) Enable self-cleaning to drain residual water.
- 3) Loosen the water supply pipe and empty any remaining water.
- 4) Turn off the power.

If stored in cold conditions, let the toilet thaw at room temperature for 30 minutes before reconnecting water and power.

If freezing occurs, use a warm cloth to thaw the water supply hose.

※Avoid using hot water or blowing hot air on the toilet or its components.



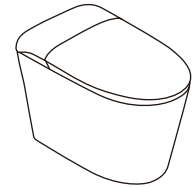
Toilet Cover Removal and Reinstallation

Removal

- Unplug the power cord from the outlet.
- Turn the water inlet valve clockwise to shut off the water supply.
- Disconnect the water supply hoses behind the toilet cover (three hoses total).
- Hold both sides of the toilet cover and lift upward firmly to separate it from the ceramic base.
- Place the cover on a clean, flat surface and clean the ceramic body as needed.

Reinstall

- Align the toilet cover with the toilet bowl and lower it straight down. A clicking sound indicates the cover is properly seated.
- Gently move the cover to ensure it is properly aligned and securely fitted.
- Reconnect the power cord and turn the water inlet valve counterclockwise to restore the water supply.



Remote Control Battery Replacement

When the remote control battery is low, the LCD display may dim or turn off.

Replace the battery as follows:

- Open the battery compartment on the back of the remote control.
- Replace with two new batteries. (Two 1.5V AA Alkaline battery).



Battery Safety Notes

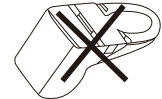
- Ensure the battery polarity (+ / -) matches the markings inside the compartment.
- Do not mix new and old batteries.
- Use alkaline batteries only.

Important Safety Precautions

- Do not pull or stretch the power cord or water supply hose.
※ This may cause damage, water leakage, or electrical failure.



- When removing the toilet cover for cleaning, handle it carefully to avoid internal damage or leakage.
- Never turn the toilet cover upside down or place it directly on the floor without unplugging the power supply.
※ This may cause surface damage, internal component failure, or water leakage.



Troubleshooting

If the product does not operate properly, refer to the table below. If the issue persists, please contact us at cs@losflexi.com.

Function	Issue	Possible Cause	Solution
Main unit	No operation	Power is not turned on	Turn on the power supply
		Power plug is not properly connected	Securely re-insert the power plug
		Power outage	Check again after power supply is restored
Cleaning functions (hip/female cleaning)	No water from the nozzle	Seat sensor is not activated	Adjust seating position to activate the seat sensor
		Wall shut-off valve is closed	Fully open the shut-off valve
		Water supply is cut of	Stop the washing function and try again after water supply resumes
		Nozzle is clogged	Clean the nozzle and remove any blockage
	Weak water flow	Is the water pressure level in the weak range	Reset water pressure
		Whether the water inlet channel is unobstructed	Clean the angle valve filter
	Spray Interruptions	Seat sensor not continuously detected	Adjust sitting position to maintain sensor contact
		Cleaning process ended automatically	Restart the washing function
		Unstable water supply	Check water supply and retry
	Water temperature is low	Water temperature set to low	Adjust water temperature settings via remote
Warm air drying	Air temperature set to low	Air temperature set to low	Adjust drying temperature settings via remote
	Warm air stops during use	Seat sensor not activated	Adjust seating position to maintain sensor activation
		Drying process ended automatically	Restart the drying function
Seat heating	Seat temperature is low	Seat sensor not activated	Adjust seating position to activate the seat sensor
		Seat temperature set to low	Adjust seat temperature settings via remote
		Energy-saving mode is active	Deactivate energy-saving mode or adjust settings
Automatic flushing	Incomplete flush	Flush pipe is misaligned or bent	Adjusting the position of the flush pipe
	No flush after leaving seat	Drain pipe blocked by foreign objects	Clear blockage from the toilet or drain pipe
		Automatic flushing function is turned off	Enable the automatic flushing function is turned on
Remote control	Remote not responding	Batteries are low	Replace with new batteries
		Moisture inside the remote	Wipe dry and air dry completely before use.



Limited Warranty Coverage

ONE YEAR LIMITED WARRANTY

Los Flexi products are crafted with superior materials and impeccable workmanship, offering our customers reliable and long-lasting products. If defects in materials or craftsmanship are detected under standard use within the first year of installation, Los Flexi will either supply replacement parts at no charge or, if deemed necessary, replace the product or its parts. This warranty is exclusive to the original purchaser, and proof of purchase is mandatory for any claim.

- This Warranty Will Be Voided If:
- The product's installation did not follow our recommendations.
- The product was relocated from its initial installation site.
- The product underwent any modifications from its original condition.
- The product suffered from neglect, misuse, chemical overuse, accidents, or any other damages.

Los Flexi does not imply that our products adhere to local building or plumbing codes. Consumers must ascertain local code compliance before and during installation. This warranty is strictly for the original purchaser and first consumer.

Los Flexi won't be held responsible for any consequential damages linked to the product's installation, replacement, return, or usage. This includes, but is not limited to, freight charges, labor, downtime, home damages, and other associated costs (e.g., professional services, investigations, audits, legal fees).

This Los Flexi warranty clearly delineates our liability. Items not specified in this warranty fall outside Los Flexi's responsibility. In states with variations concerning implied warranties, our compliance is ensured.

For any queries or concerns, feel free to reach out to us at

Email: cs@losflexi.com
Phone: (+1) 662-502-5099
Site: www.losflexi.com

Scan for the High-resolution User Manual

