

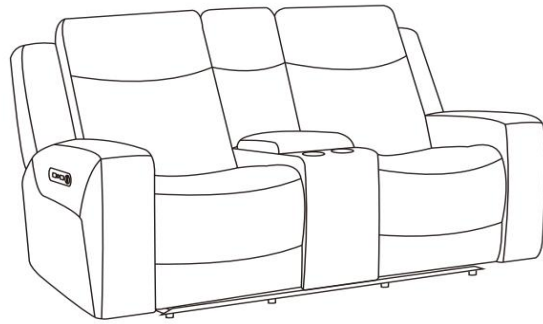
# FLEXSTEEL®

## Power Reclining Loveseat with Console & Power Headrests

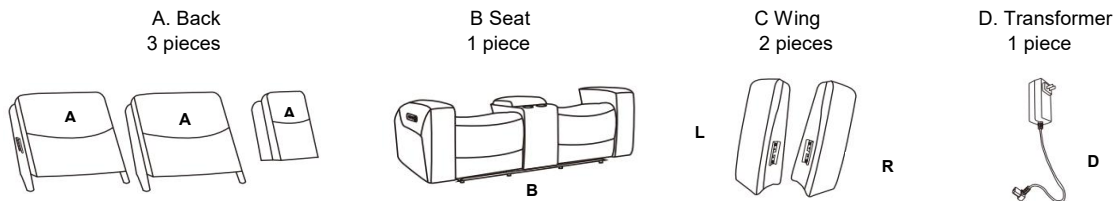
### IMPORTANT NOTE

Read these instructions carefully, and familiarize yourself with each procedure before assembling the furniture. Check that you have all the component parts, and familiarize yourself with each part before proceeding.

Take all the fittings out of the plastic bag and separate them into groups. Ensure you have enough space to lay out all the parts before assembly. To prevent damage to the parts, we recommend that you assemble the unit on a soft, level surface.



### Part List



### Assembly Instructions

#### STEP 1

- Detach the transformer (D) from the bottom of the Seat (B)
- Detach the Middle Back (A) from the bottom of the console
- Detach the wings (L/R) from the bottom of the armrests. (See Figure 1)

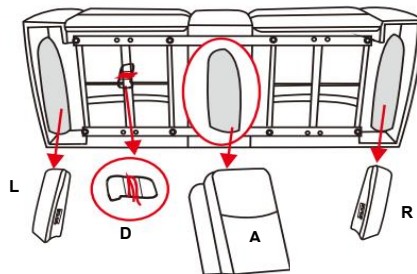


Figure 1

#### STEP 2

- Take out the 3 bolts from the bottom of Middle Back (A)
- Assemble the Middle Back (A) with console with the 3 bolts
- Attach Left Back (A) and Right Back (A) to Seat (B), ensure bracket is fitted tightly
- Insert Left Wing and Right Wing to Left and Right Back (B), Ensure Wing fixed security. (See Figure 2)

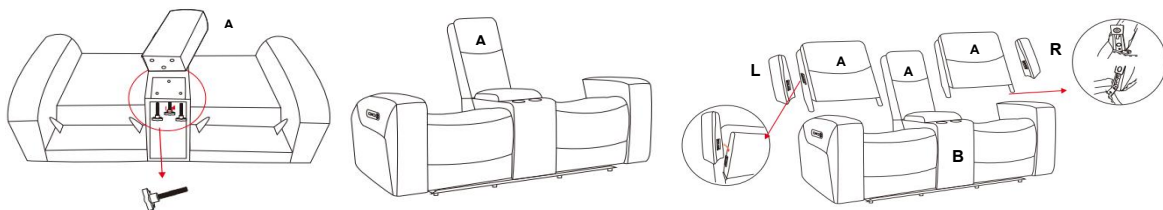


Figure 2

#### STEP 3

- Zip the black fabric on bottom of Back (A) with back of Seat (B). (See Figure 3)

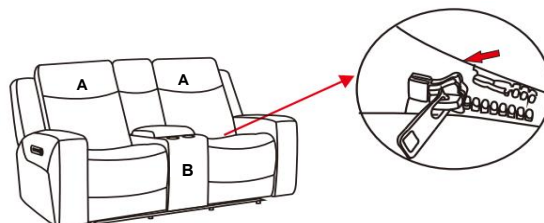


Figure 3

#### STEP 4

Flip up the back flap, connect the headrest cable to the power button control cable and place them behind the flap. (See Figure 4)

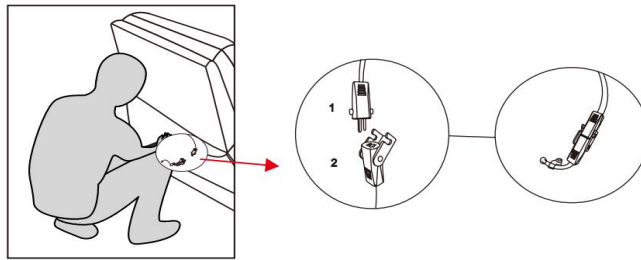


Figure 4

#### STEP 5

Connect the transformer (D) into the power port on the back of the piece, then plug it into a nearby outlet, still making sure it is clear of metal base. (See Figure 5)

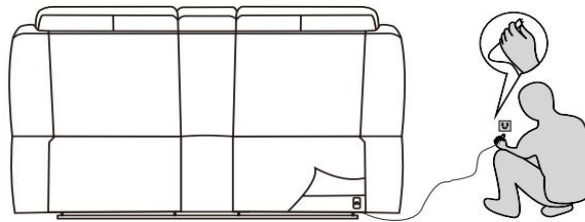


Figure 5

#### STEP 6

Fasten the back flaps to the bottom of the furniture. (See Figure 6)

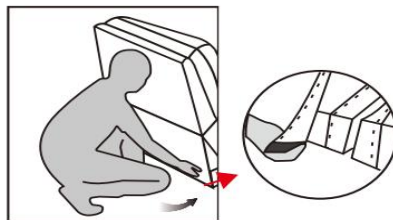


Figure 6

#### Disassemble Back (A)

Pull up the spring leaf in bracket, then lift Back (A) up. (See figure 7)

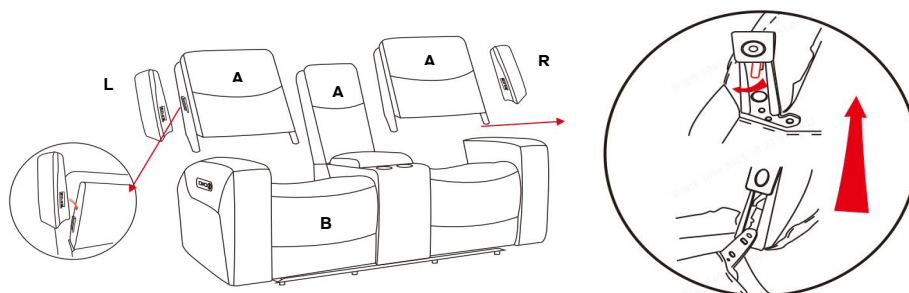


Figure 7

#### IMPORTANT NOTE

- To avoid any risk of suffocation to children or pets, dispose of all plastic bags immediately.
- To ensure proper performance, occasionally check for loose screws and tighten as needed.
- If the reclining functions are not working properly, check for loose cable connections before contacting the retailer.