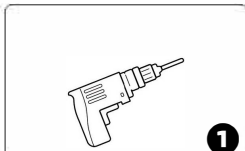
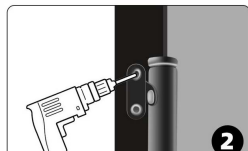


Rivet disassembly method



Prepare an electric drill



Align the electric drill with the rivet



Knock out the rivets with an electric drill



Remove the bracket to complete the demolition

Assembly Instructions



Check the wall on which you want to hang the mirror to ensure it is a load-bearing wall so that it can support the weight of mirror.

1

Measure distance between centers of two hooks (Flexible rule is recommended as the tool).

2

Mark the centers of hooks on the wall: Measure the width and height of the wall you choose with flexible rule, and mark the location of two centers of hooks with a pencil.

3

Drill all the marked place with prepared percussion drill whose broach is with a diameter of 6mm-8mm, and the holes drilled should be about 5cm deep.

4

Knock expansion screws into the holes drilled with hammer.

5

Screw screws into expansion screws with a screwdriver, and keep the top of screws 5mm away from the wall (A plier required to screw 7-shaped hooks).

6