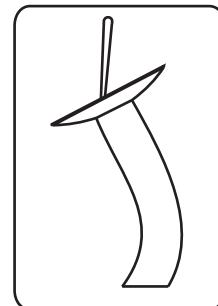


Product Description and Measurements

Installation Instruction

Single Lever Washbasin Mixer



Thank You

Dear Valued Customer,
Kraus would like to take this opportunity to thank you for purchasing Kraus products. It is our sincere hope that you are completely satisfied with your new purchase. We welcome any questions or comments you may have and look forward to assisting you in the future.

Sincerely,
Kraus customer service department.

Prior To Installation Steps

1. Unpack your new product and ensure that all the parts are contained in the packaging. Keep the product in its original box until you ready to install it.
2. Shut off the water supply if replacing a previously-installed faucet.
3. Observe all plumbing and building codes in your area.
4. It is recommended that installation of the product be done by a professional plumber.

Waterfall Faucet Installation

Please remember to turn off the hot and cold valves prior to installation.

STEP 1. Check to see that your set contains the following parts:

- The faucet
- Hot and cold water lines
- One rubber washer
- One brass washer
- Two mounting screws

STEP 2. While holding the faucet facing you, locate the two larger openings at the base of the faucet.

STEP 3. The left opening is for the hot water supply line and the right opening is for the cold water supply line.

STEP 4. Gently screw in the hot and the cold water lines. Make sure the waterlines are tightly screwed in place.

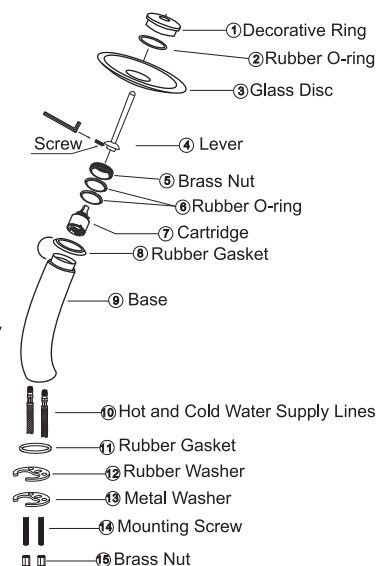
STEP 5. Insert the waterlines through the faucet opening in the countertop and place the faucet on the countertop. Make sure the faucet is facing forward and is aligned properly.

STEP 6. From underneath the countertop, place the rubber washer first so that it sits on top of the metal washer. Be sure to align the openings on the washers with the openings on the faucet.

STEP 7. Screw in the mounting screws through the washers and into the faucet from underneath the countertop.

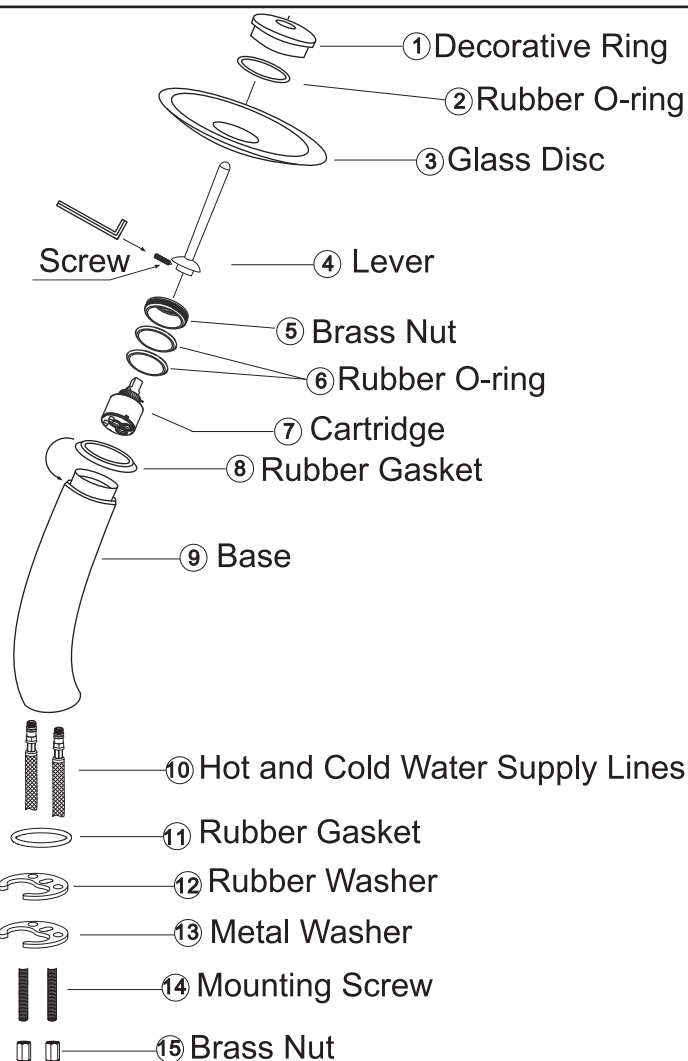
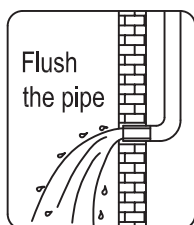
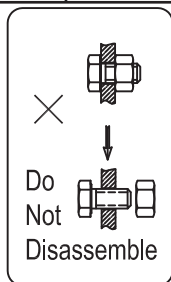
STEP 8. Tighten the brass nuts (located on the mounting screws) until the faucet is held tightly in place.

STEP 9. Connect the hot and cold water supply lines to the corresponding waters supply valves.



Installation

Code	Parts List	Quantity
1	Decorative Ring	1
2	Rubber O-ring	1
3	Glass Disc	1
4	Lever	1
5	Brass Nut	1
6	Rubber O-ring	2
7	Cartridge	1
8	Rubber Gasket	1
9	Base	1
10	Hot and Cold Water Supply Lines	1
11	Rubber Gasket	1
12	Rubber Washer	1
13	Metal Washer	1
14	Mounting Screw	2
15	Brass Nut	2



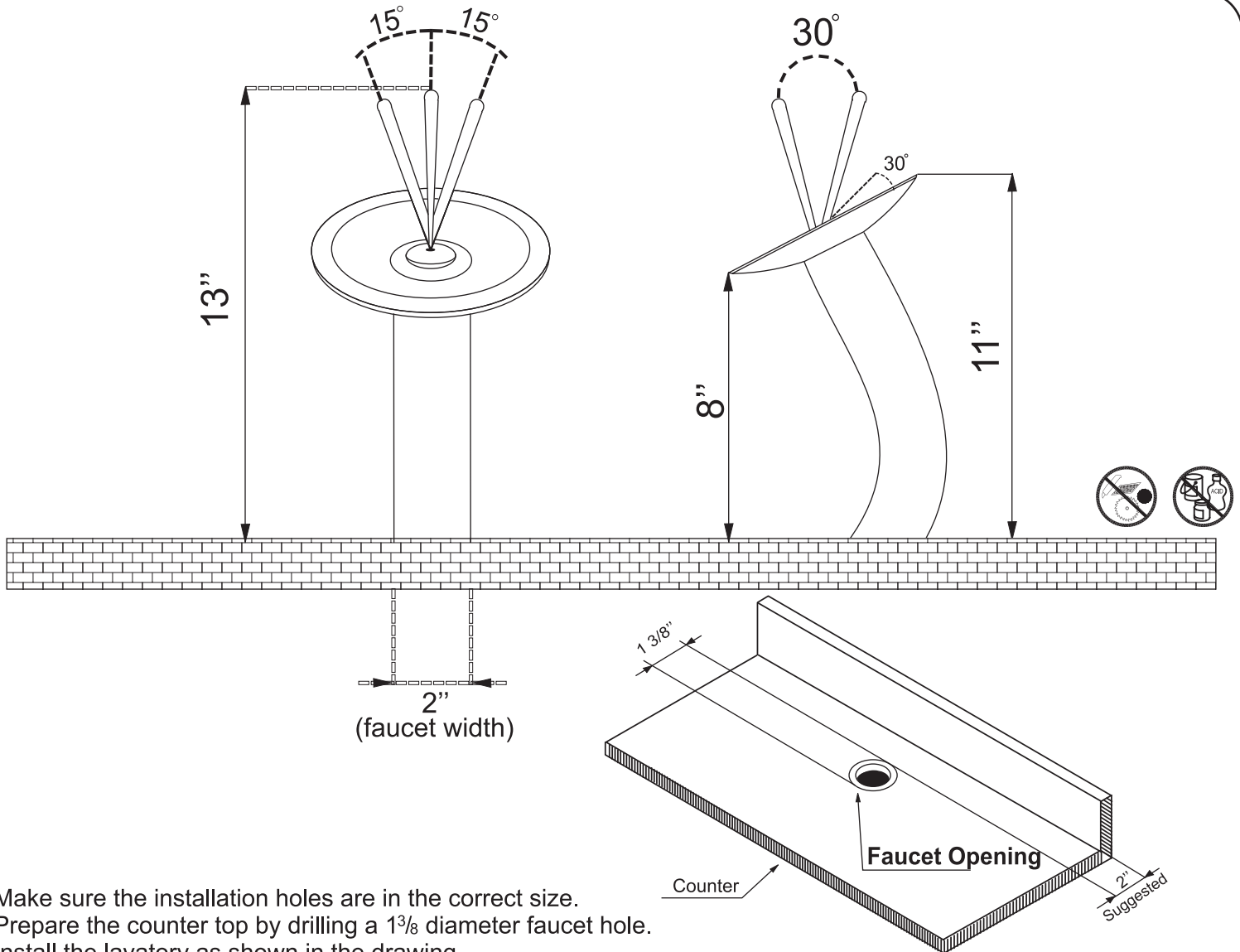
Please note:

Do not disassemble the faucet. Be sure to flush the water supply lines prior to using the faucet to prevent build up.



MODEL-KGW-1700

Installation



Make sure the installation holes are in the correct size.
Prepare the counter top by drilling a $1\frac{3}{8}$ diameter faucet hole.
Install the lavatory as shown in the drawing.
Connect the main body and water supply pipe with water inlet pipe

Usage, Cleaning & Maintenance

Cleaning & Maintenance

1. Rinse with warm clean water and blot dry with a clean soft cloth only.
2. Never use any detergent, polisher, scraper or an abrasive cloth.
3. Do not use acid detergent.

Usage

1. Grab lever and push back to open water flow.
2. Once open, turn/push to the right to increase cold water flow.

Contact us toll-free at 1-800-775-0703; or visit our website at www.kraususa.com.