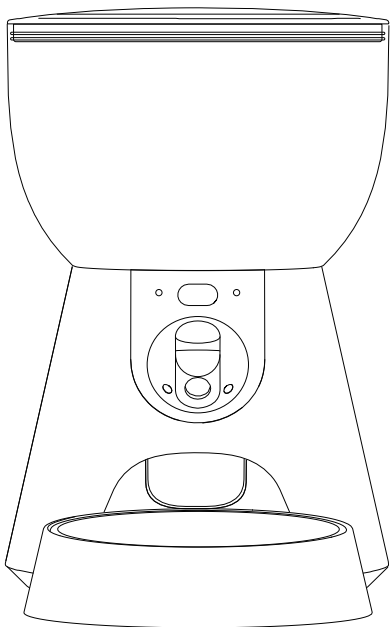


User Manual

Smart Pet Feeder



Please read the user manual carefully before using the product

Components



1. Food Hopper



2. Main Body



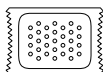
3. Top Lid



4. Food Bowl



5. Type-C Adapter



6. Desiccant

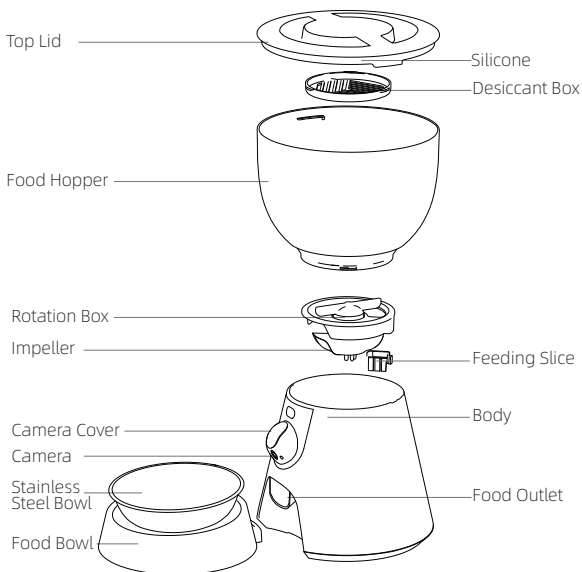


7. Manual



8. Stainless Steel Bowl

Features



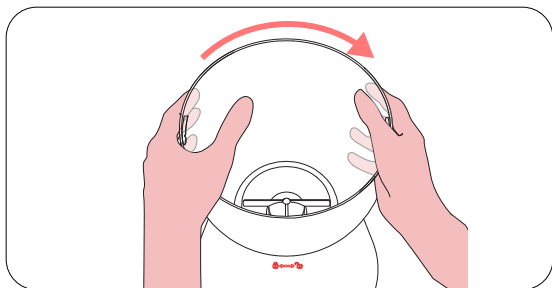
Product Introduction

| | |
|---------------------|-----------------------------------|
| Product Name | Smart Pet Feeder |
| Product Model | F17-C |
| Dimension | 216mm*353mm*327mm(with food bowl) |
| Color Box Size | 225mm*225mm*270mm |
| Material | Food grade ABS、Stainless steel |
| Net Weight | About 1.45KG |
| Food Appliance | 5~15mm dry pet food |
| Pets Appliance | Cats & Small size dog |
| Capacity | 4L(around 2kg) |
| Power Supply | USB 5V2A/ 4*D sized batteries |
| Rated Voltage | USB 5V |
| Rated Power | 5W |
| WiFi Connection | 2.4G&5G |
| Working Temperature | 0°~50° |

Setup and Assemble Feeder

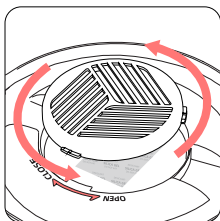
Install food hooper

Take out the food hooper and install it by aligning the slot on the base.



Place Desiccant

Open the desiccant box on top lid, tear off the transparent wrapping paper of the desiccant bag, place it into the box and close it.



Plug in Power Adapter

① Battery power supply (APP Not Work): insert 4 alkaline "D" batteries and reinstall the battery cover.

② Power adapter supply: plug in the power adapter and connect the power cable into the card slot

***Note: Please use safe and standard alkaline batteries. Do not mix batteries of different specifications and models.**

Install the Food Bowl

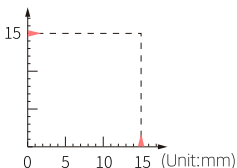
Tilt the base unit back slightly, align the buckle of the food bowl with the base unit to install; the same steps to disassemble.

Fill Pet Food

Open the top lid, fill fresh dry food into the food hopper, and close the top lid.

***Note: The device only support 5-15mm dry pet food**

Grain Size Self-check:



Product Introduction

Get Access to App

- ①Scan the QR code to download the APP
- ②Please login or register an account
- ③Turn on the bluetooth, click "+" on top right in Home page and Add device follow the instruction.



Download the APP

Note: Both 2.4Ghz and 5Ghz are allowed to use.

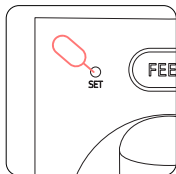
Set Up Your Programmed Feeding

The pet feeder will dispense the food based on the programmed feeding and users can receive the feeding notifications accordingly.

Reset Your Pet Feeder

Long press button for 10 seconds to reset your feeder until you hear "Di" sound. The Orange Link indicator will flash rapidly and now you can try to connect your pet feeder again.

Note: You can use tools like card pins to complete this step



APP Remote Feeding

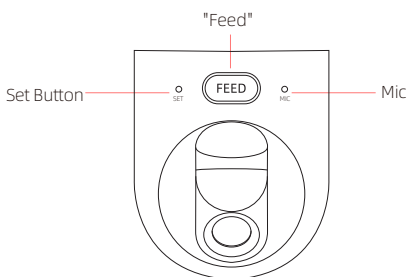
Enter device setting page and click "Feeding", select servings and click Feed to complete the remote feeding.

Note: Users can not feed your pets via APP when powered by batteries





Instant Feeding

Short press "FEED" twice, then the device will dispense one serving, repeat the above step for more servings.

Operation Features



Indicator State

| | | |
|---|------------------------|--------------------------|
|  | White indicator flash | Powered by adapter |
|  | Orange indicator flash | Connecting |
|  | Blue indicator solid | Connected |
| | | Working |
|  | Red indicator flash | Food shortage & Abnormal |
| | | Low battery |

Device Disassemble & Clean

Power off

Unplug and take out the alkaline batteries.

Clean the Food Hopper

① To disassemble, hold both sides of the food hopper and rotate to the left and lift upwards.

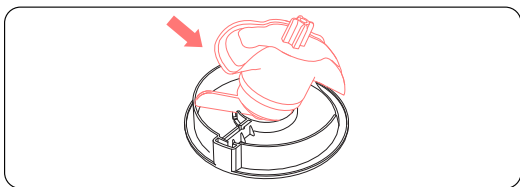
② Disassemble the impeller/ feeding slice and feeding mechanism.

③ The main body of the feeder is not dishwasher-safe.

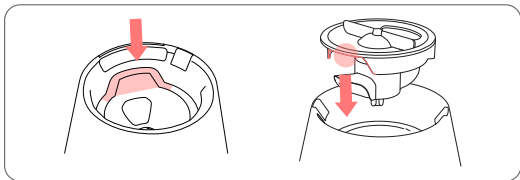
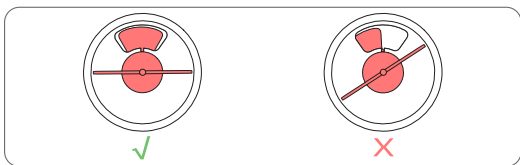
④ The food bowl is dishwasher-safe once removed from the main body.

Assemble the impeller

① Align the impeller with the certain position and install it at an inclined angle



② Align the impeller as shown in the figure



Clean the Food Bowl

Make sure all parts of the feeder are completely clean and dry before filling with food.

Clean the Body

Use the dry soft cloth to wipe it, the body is not waterproof, please do not use wet cloth.

Replace the desiccant pack

Open the desiccant box cover and replace the desiccant pack. It is suggested to replace it every one or two months.

Replace Alkaline Batteries

Unplug and open battery lid at the bottom, then you can replace the batteries.

Replace or Change the Food

Empty the food hopper, then fill the fresh food and proceed instant feeding once.

※Attention:

- ①Please keep the food hopper dry after cleaning it.
- ②Please replace the food on a regular basis if your pets did not eat up.(For time period, please refer to the food packing instruction).
- ③Please clean and maintenance your device on a regular basis to prolong the using period of your pet feeder.

Safety Precaution

Keep Plug In

1. Please check the power supply of the device before going out to ensure that the power supply is stable.
2. Please keep charging the device to make sure the wifi connection is stable.
3. The camera will turn off automatically that get into the lower power consumption mode when using dry batteries, but your feeding plan is working as the same.
4. There will no record of the feeding status and records if the device is offline.

Working Conditions

1. Place the device horizontally and securely, tilt, sway or turning upside down are forbidden.
2. Exposure to sunlight could damage the internal electronics or cause discoloration. Do not place or store an appliance where it can fall or be pulled.
3. Do not remove product components other than food bowl and hooper.
4. Do not place any foreign object in the pet feeder
5. Please make sure there is no objects on and around the food bowl to prevent pets from eating normally.

Important Safety Information

1. This product is only applicable to cats and small dogs.
2. Do not allow children to play with, in or around pet feeder.
3. The desiccant is not edible. If it is damaged, do not use it
4. The feeder is only applicable 5-15mm dry pet food.
5. Do not disassemble the pet feeder other than components as instructed in this operating guide
6. Do not immerse feeder in water, as this may damage electronic components.
7. The feeder only supports charging with 5V/2A adapter.
8. Do not allow pets to chew on or swallow any parts.
9. Do not use the pet feeder for any purpose other than feeding pets.
10. Do not touch the camera to avoid the scratches and oil stain

FAQ

| What happened to your device | What happened to your device | How to solve it |
|---------------------------------|---|---|
| Food hopper cannot be installed | Food blocked on the installation position | Clear the cat food inside the installation position and reinstall |
| Device Abnormal | Impurities inside food hopper | Clean the impurities inside of food hopper |
| | Food stuck near the food outlet | Clean the food left in the food bowl |
| | Food size inapplicable | Ensure to use 5-15mm dry pet food |
| | Infrared sensor faulty | Contact After-sale Service |
| | Motor Faulty | Contact After-sale Service |
| Lack of Food | Lack of food | Fill pet food and instant feed once |
| | Food hopper not fix well | Disassemble the food hopper and re-fix it. |
| Device Offline | Powered by Battery | Check if power cut or power adapter is fixed properly |
| | Network abnormal or something wrong with WiFi | Check if the WiFi is normal and re-connect the pet feeder |
| | Mainboard Defective | Contact After-sale Service |