

Bathroom Vanity

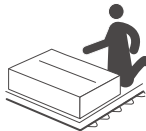
ASSEMBLY INSTRUCTIONS

Notice:

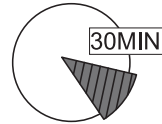
1. Follow the installation instructions. Please confirm all accessories are preset before installation.
2. Do not fully tighten the screws during initial assembly. Fully tighten screws only once all pieces which are correctly assembled.
3. If you encounter any problems during installation, please contact our customer service.
4. Please unbox the item from the side with an open-label and put a carpet on the floor to avoid scratching it.



Recommended installers : 2



Put a carpet on the floor
before unpacking



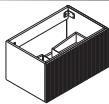
Estimate installation time:
30 minutes

Item no.	Reference Image	Qty
A		x1
B		x1
C		x1
1		x1
2	 Ø6x26mm	x6

Item no.	Reference Image	Qty
3	 Ø15x9mm	x6
4	 Ø3.5 x 14 mm	x2
5	 Ø4 x 16 mm	x8
6		x1
7		x1

ASSEMBLY INSTRUCTIONS

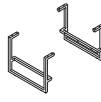
1



Ⓑ 1pc



Ⓒ 1pc



① 1pcs



④ 2 pcs



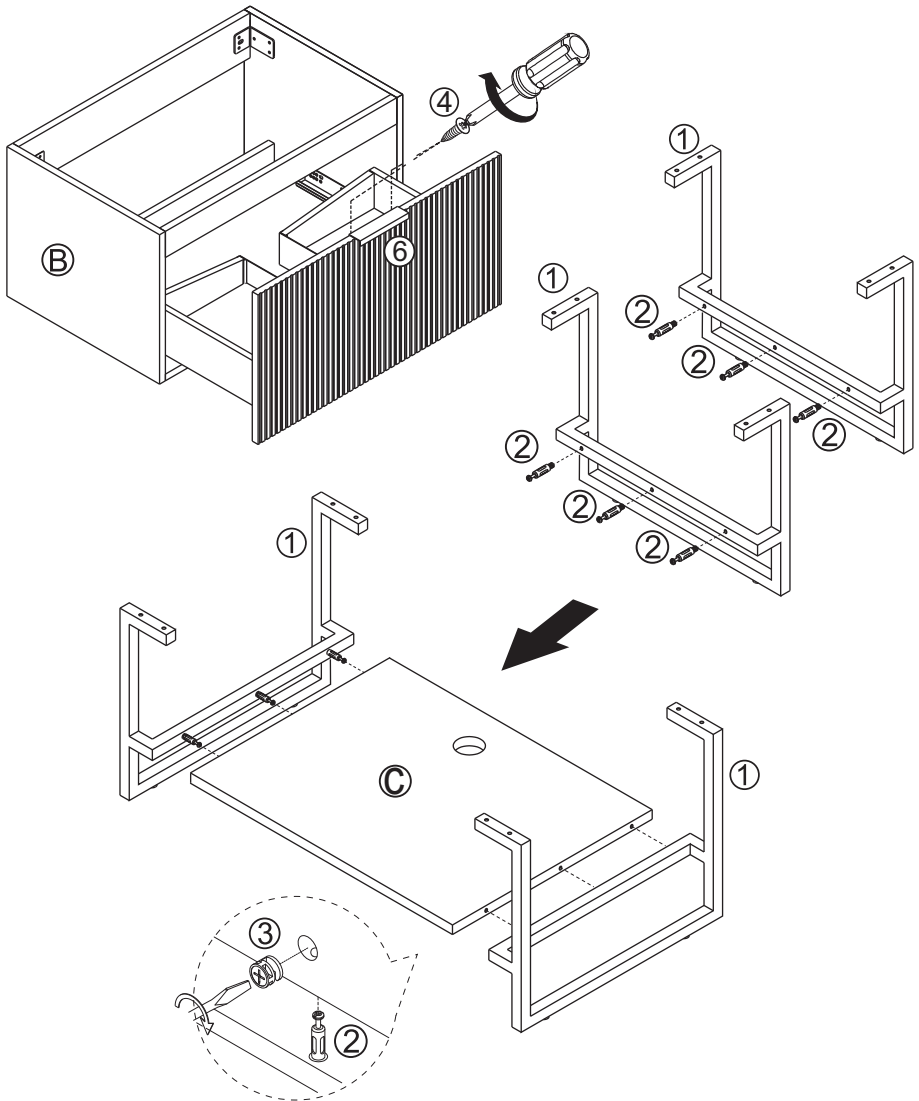
⑥ X1



② 6 pcs



③ 6 pcs

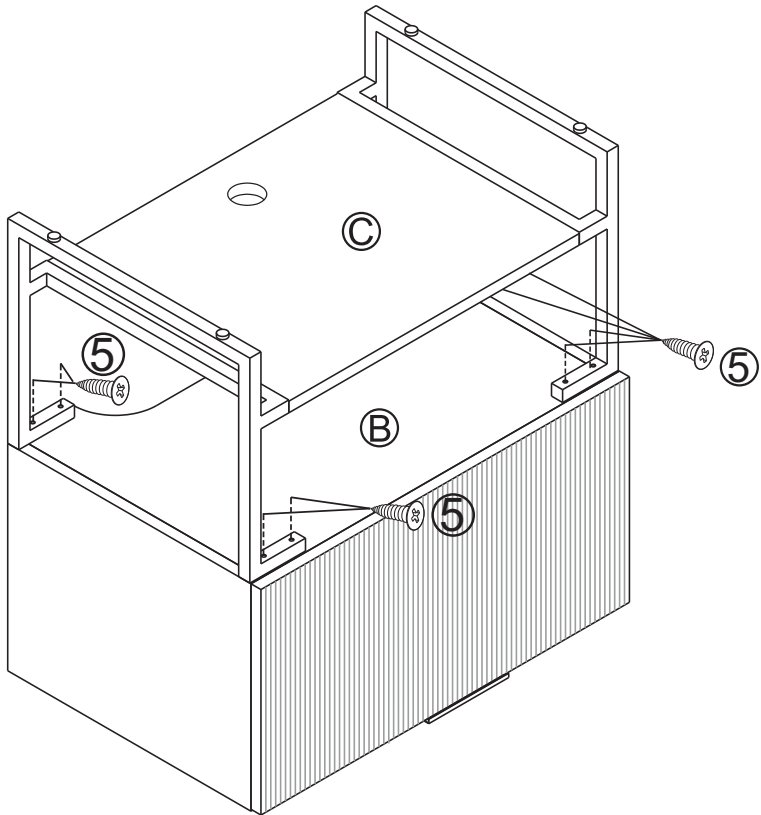


ASSEMBLY INSTRUCTIONS

2

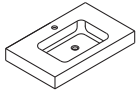


⑤ 8 pcs

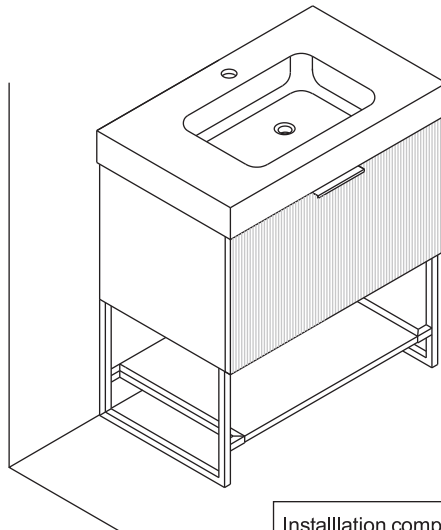
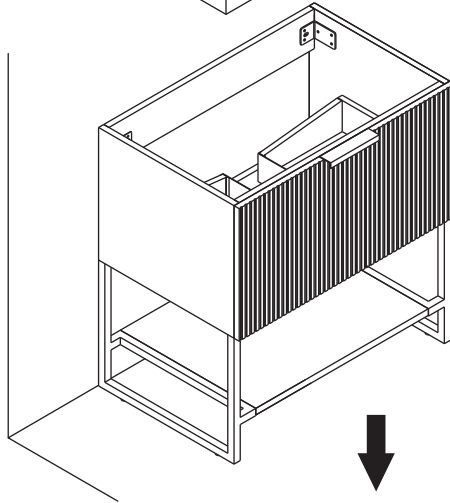
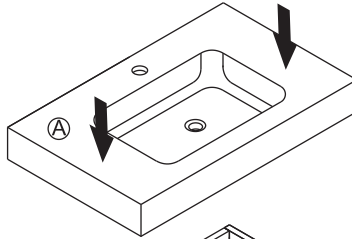


ASSEMBLY INSTRUCTIONS

3



Ⓐ 1pc



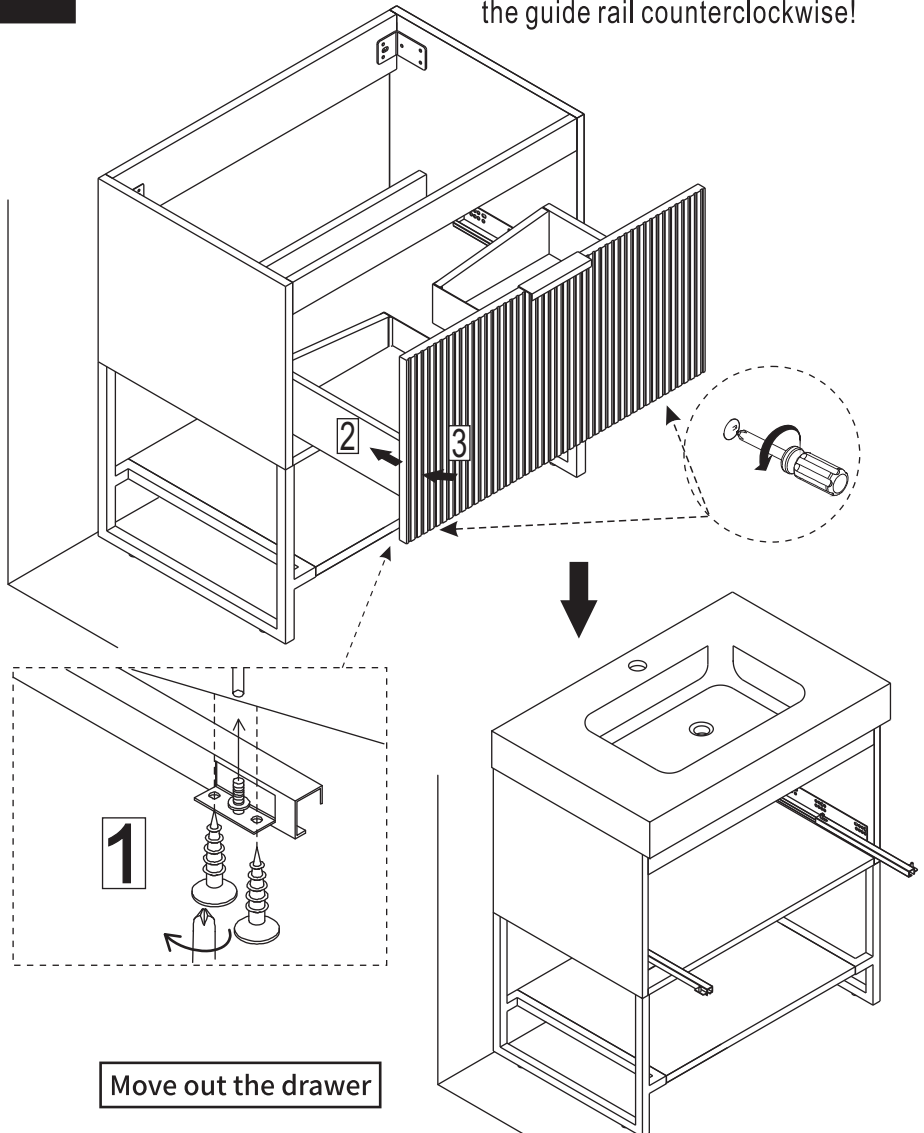
Installation completed

ASSEMBLY INSTRUCTIONS

4

Installation of drain assembly

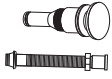
Turn the screw at the bottom of the guide rail counterclockwise!



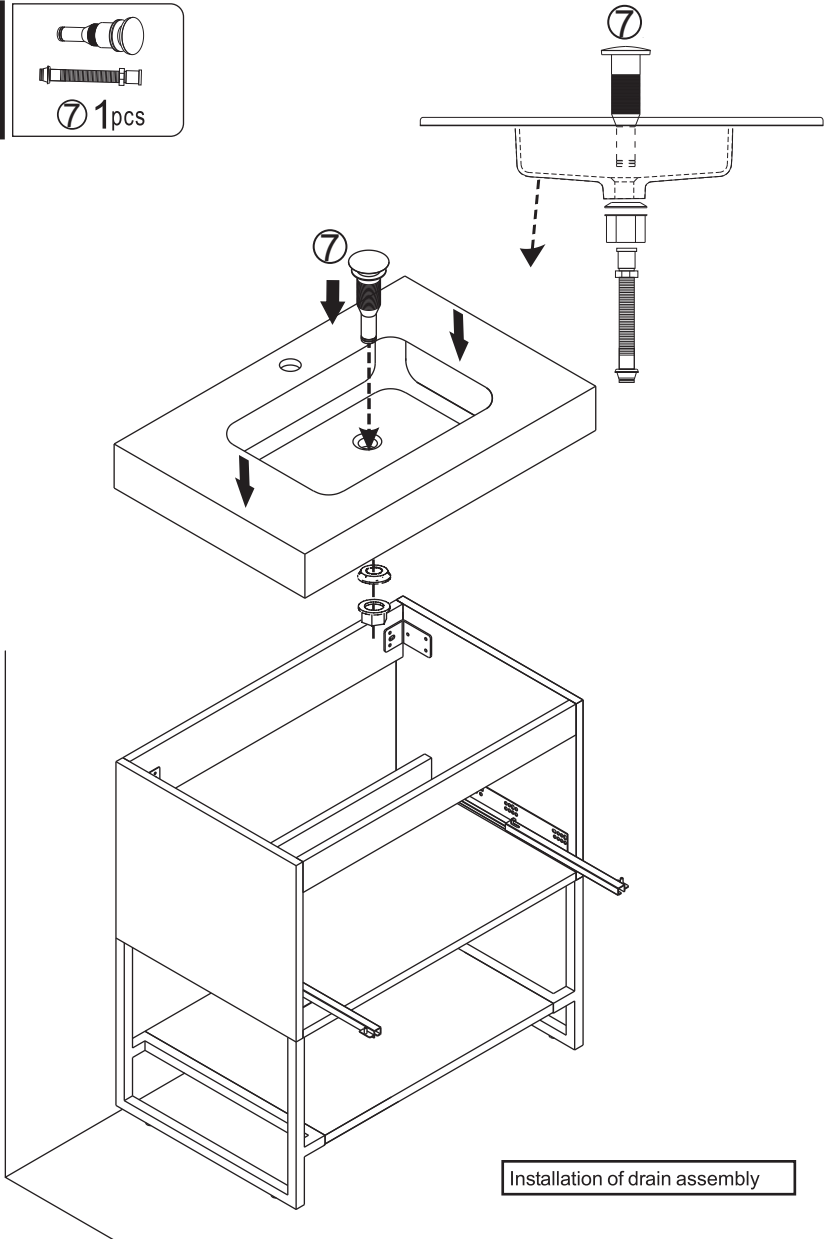
Move out the drawer

ASSEMBLY INSTRUCTIONS

5

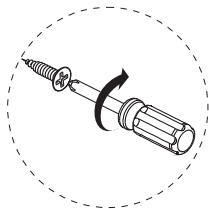
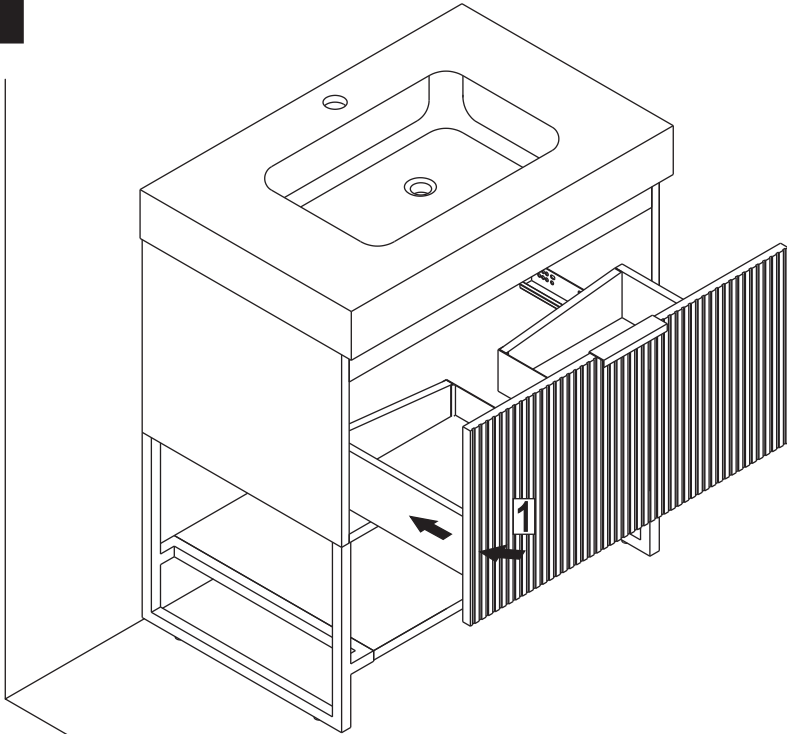


⑦ 1pcs



ASSEMBLY INSTRUCTIONS

6



Installation completed

