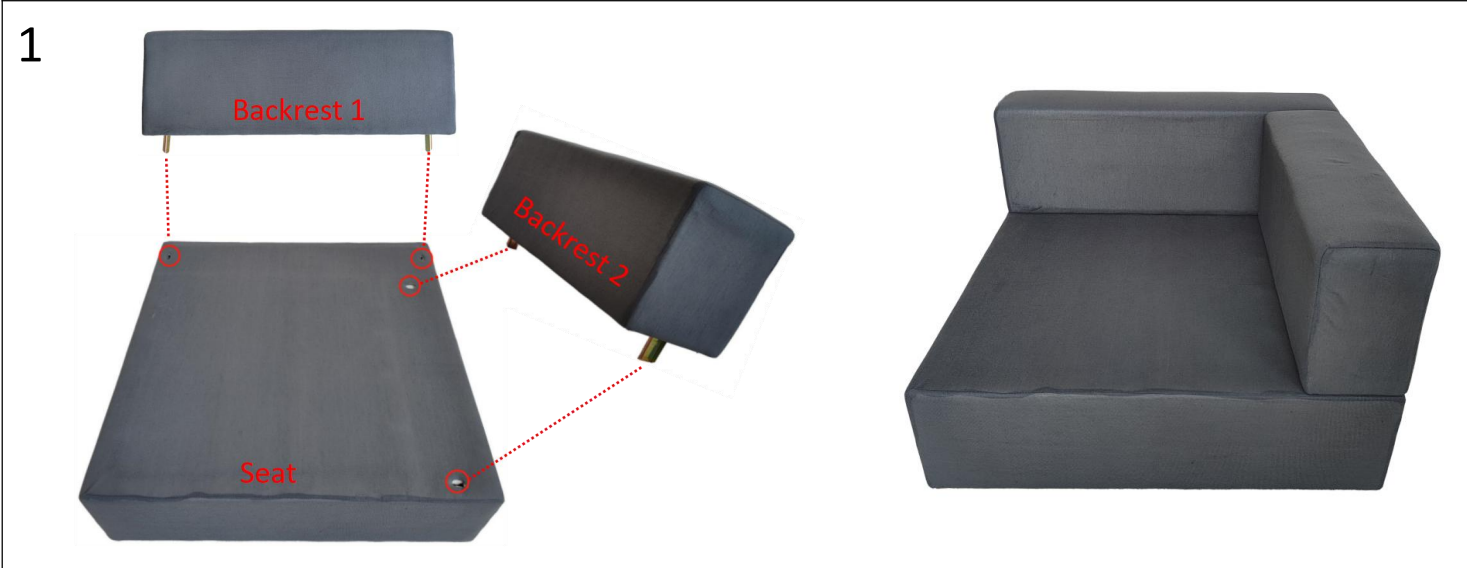


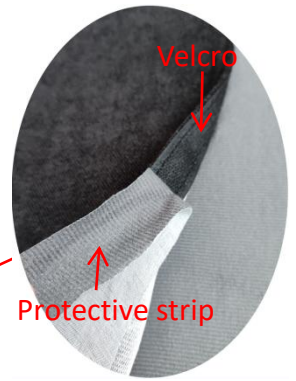
Installation

To avoid scratches and swallowing parts, please do not install by children!


| Hardware List | | Hardware List | |
|---|--------------|---|-----------------|
|  | Seat |  | Backrest 1 |
|  | Backrest 2 |  | Seat cushion |
|  | Back cushion |  | Armrest cushion |
|  | Sofa cover |  | Legs |
|  | Buckle |  | 8x20mm screw |



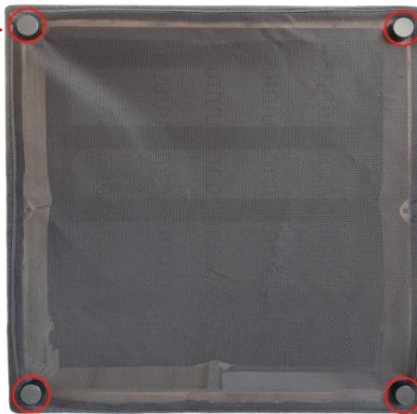
3 Put on the sofa cover. Be careful to loosen all the zippers first.
The mesh goes on the bottom of the couch.
Suggestion: you'd better not remove the protective strip before finish putting the cover on.



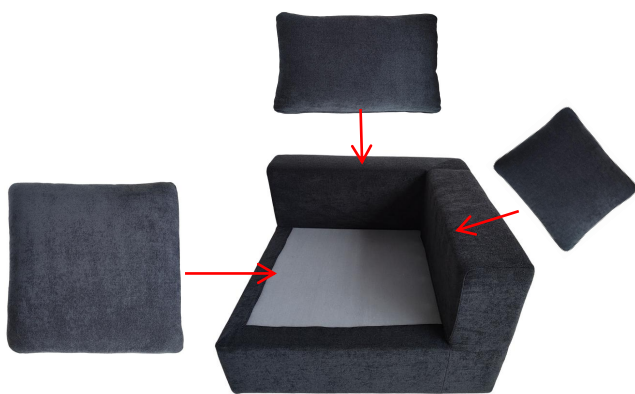
4



Secure the legs of the sofa.



5



Three dark grey cushions are shown being placed on the sofa. One is on the seat, and two are on the backrest. Red arrows indicate the placement of each cushion.

Can be used as both sides and corner piece.



6 Apply the connection buckles to connect the seats together (or not, it's totally up to users).

