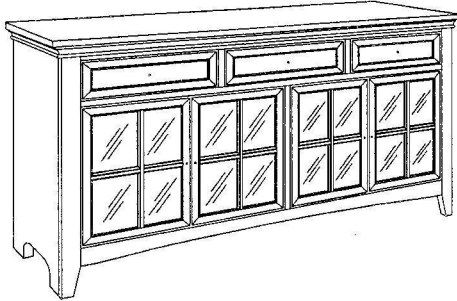


ASSEMBLY INSTRUCTION

TV STAND WITH 3 DRAWERS

A

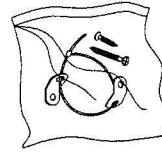
TV Stand
with 3 Drawers



1 pc

B

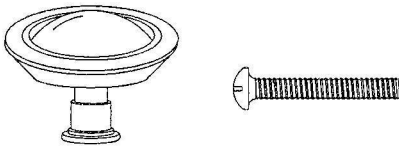
Anti- Tipping Kit



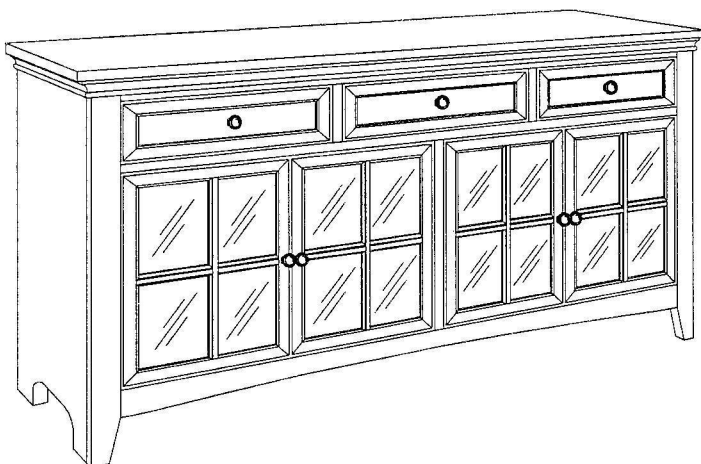
1 set

C

Door Knob with THMS Screw
M4 x 25MM
(inside the drawer)



4 pcs

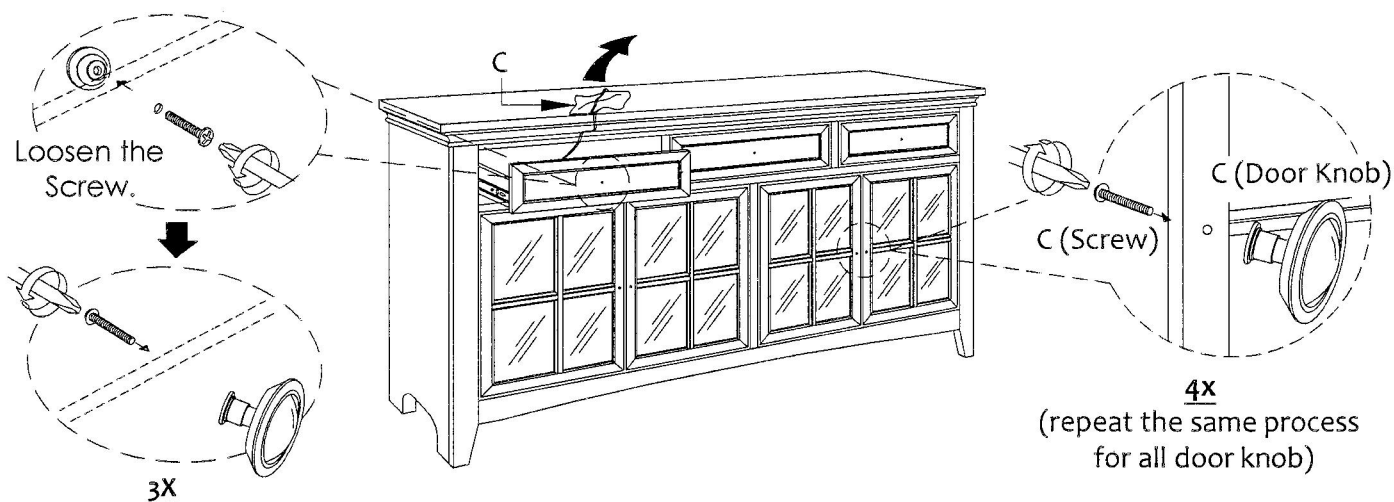


This page lists all the contents included in the box. Please take the time to identify the hardware as well as the individual components to this product. As you unpack and prepare for assembly, place the contents on a carpeted or padded area to protect them from damage.

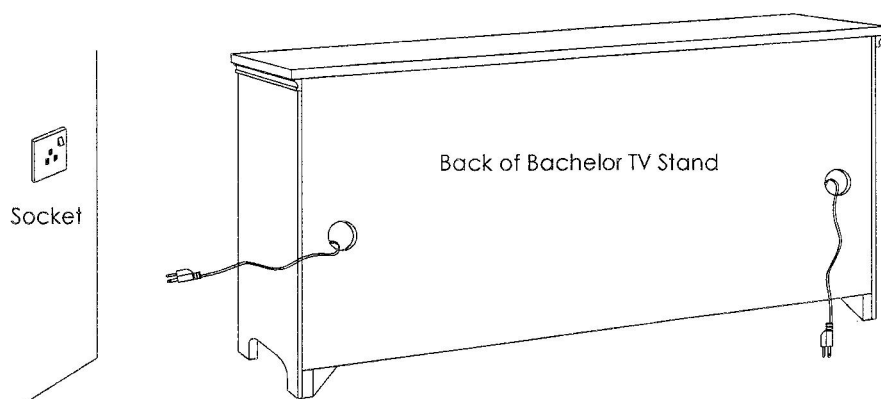
IMPORTANT NOTE :

1. Do not tighten all screws / bolts until all completely assemble.
2. Keep all hardware parts out of reach of children.

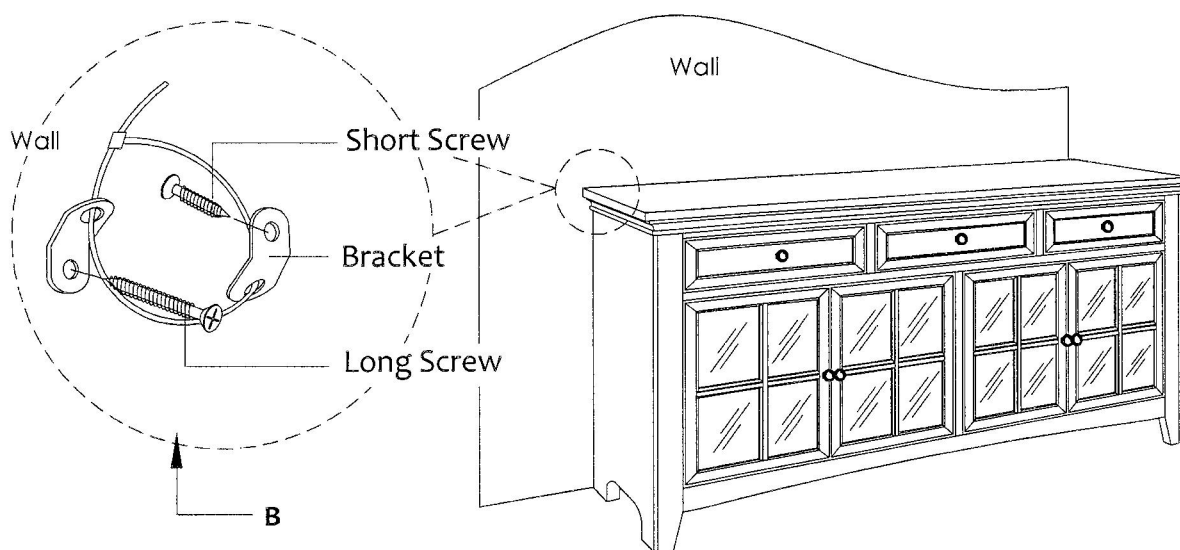
- 1** Open the top drawer and find the hardware pack for Door Knob inside. Loosen the screw of the Drawer Handle to re-assemble the Handle. Attached the Door Knob (C) to the pre-drilled holes and tighten it with the screw given using Phillip Headscrewdriver.



- 2** Take the power cord thru the hole on the back of the Bachelor TV Stand and plug it into a wall outlet.



- 3** Attach Anti-Tipping Kit (B) to wall. Attached bracket (vertically) to wall using the long screw provided. Attach bracket (vertically) to furniture back (directly below top) with short screw. Place bracket as close to center of furniture back as possible in relation to wall stud and the desired position in the room. Move furniture to its final position. Thread the strap through bracket, pull it tight.



CLEANING & CARE

Treat surface with care. Surface is resistant to scratches but is not scratches resistant. Clean surface with a dry or damp soft cloth. Do not use abrasive cleaners. Hardware may loosen over time. Periodically check that all connections are tight.