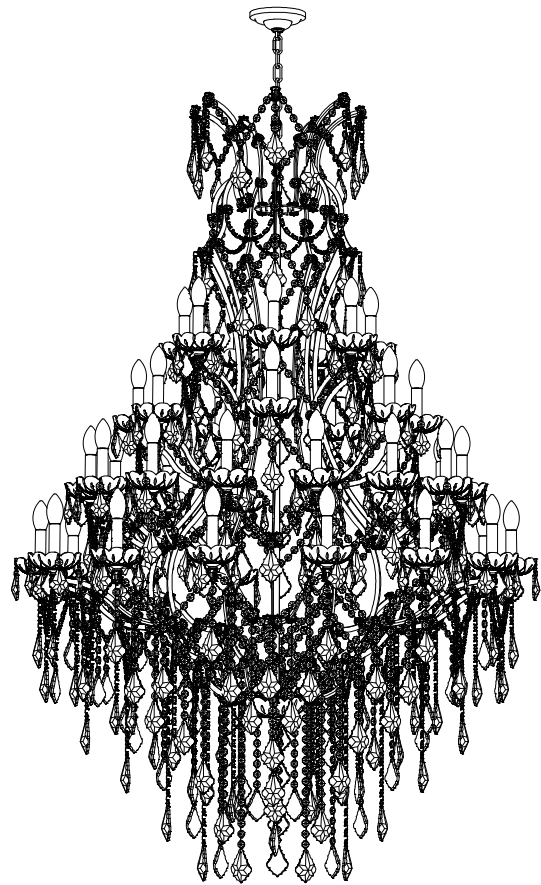


# MANUAL BOOK



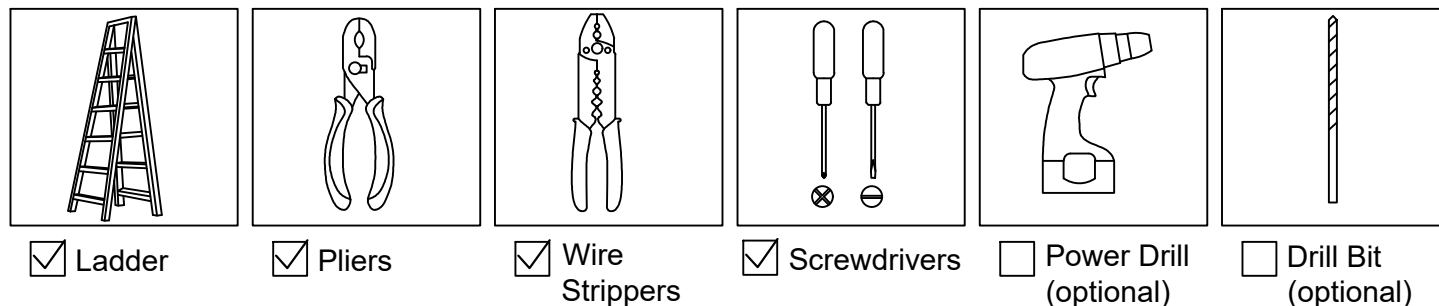
## MAIN SPECIFICATIONS

Type	Chandelier
Fixture Size	D49 ",H75 "
Hanging Chain	Max.60"
Weight	Appr.85 LBS
Bulbs Required	42 E12 Bulbs (not included)
Wattage	Max.40W per Bulb
Voltage	110V-130V

## PREPARATION

- Check if the packaging is complete and remove all accessories from the packaging
- Refer to the accessory list on pages 3 and 4, verify and familiarize with the parts. **Easily fragile/damaged/lost parts come with spare parts to ensure a smooth installation**
- If dimming function is required, please purchase suitable dimming bulbs and matching dimming switches
- Assembly will take time, especially for hanging crystals which is inevitable for most chandelier installations. Please be patient
- Please wear gloves for installation

### Tools You Need



If mounting to a support structure, you will also need the optional tools.

## WARNING/CAUTION

**WARNING:** FOR YOUR PROTECTION AND SAFETY-Carefully read and understand the information given in this manual before beginning assembly and installation. Failure to do so could lead to electric shock, fire or other injuries. **PRODUCT MUST BE INSTALLED BY A PERSON FAMILIAR WITH THE CONSTRUCTION AND OPERATION OF THE PRODUCT AND THE HAZARDS INVOLVED IN ACCORDANCE WITH THE APPLICABLE INSTALLATION CODE.**

**BE SURE THE ELECTRICITY TO THE WIRES YOU ARE WORKING ON IS SHUT OFF; EITHER THE FUSE IS REMOVED OR THE CIRCUIT BREAKER IS TURNED OFF. TURNING THE POWER OFF USING THE LIGHT SWITCH IS NOT SUFFICIENT TO PREVENT ELECTRICAL SHOCK.**

**NOTE:** The important safeguards and instructions appearing in this manual are not meant to cover all possible conditions or situations that may occur. It must be understood that common sense, caution, and care, are factors which cannot be built into any product. These factors must be supplied by the person(s) installing this unit.

### READ & SAVE THESE INSTRUCTIONS

**CAUTION:** Before assembling the lighting fixture, refer to the section titled Wiring Connections. If you feel you do not have enough electrical wiring experience, either refer to a do-it-yourself wiring handbook or have your lighting fixture installed by a qualified, licensed electrician.

### LIGHT BULBS REQUIRED

This fixture uses E12 bulb base, works with incandescent, LED, CFL, halogen or color changing bulbs up to 40W. Fully dimmable when used with dimmable bulbs and a compatible dimmer switch (not included).

Due to different requirements, in order to avoid waste, **BULBS ARE NOT INCLUDED IN THIS ITEM.** Please purchase the right bulbs you need.

42 pieces E12 bulbs are required for this light fixture.

## Trouble Shooting

### 1. Missing/Broken Parts

• Make a list of the missing/broken parts according to the packing list, take photos for broken parts, then email us for free replacements. (If spare parts in package is still insufficient)

### 2. Bulbs Do Not Light Up

- Check your power and switch to make sure it's power on.
- Check the bulb to make sure it's installed correctly.
- Change a new bulb.
- Check the wires to make sure they are connected correctly.

### 3. Bulbs Flicker/Noisy Operation

- Check the bulb to make sure it's installed correctly.
- Change a new bulb.
- Make sure your bulb is dimmable if you use a dimmer switch.

### 4. Could Not Install/Assemble

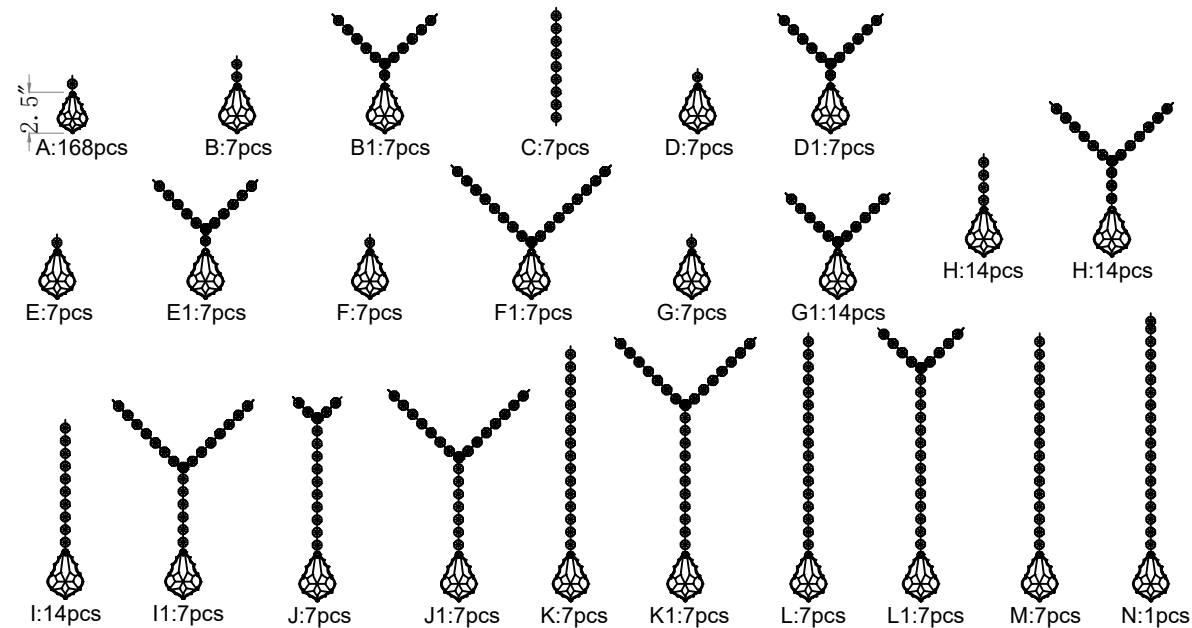
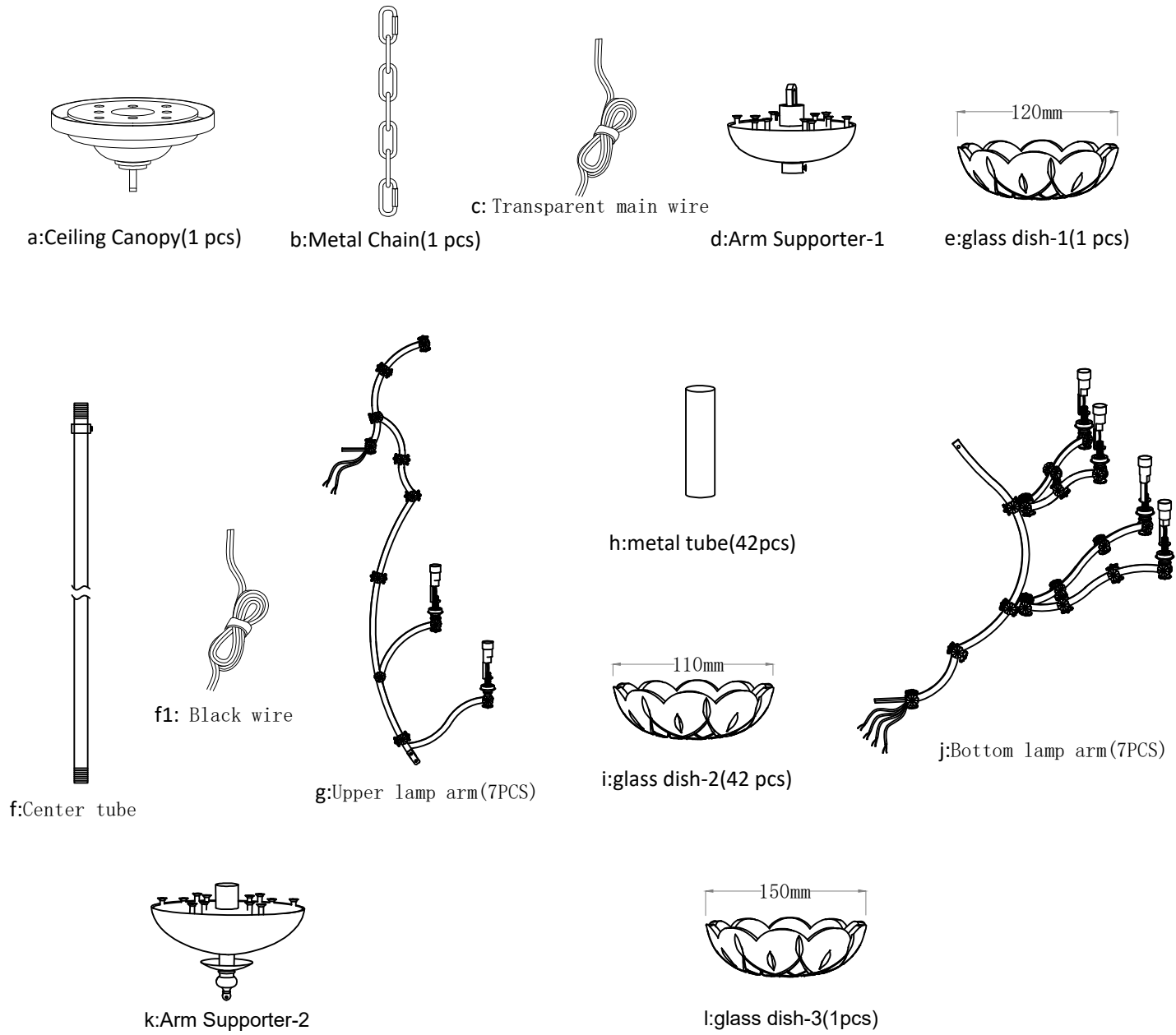
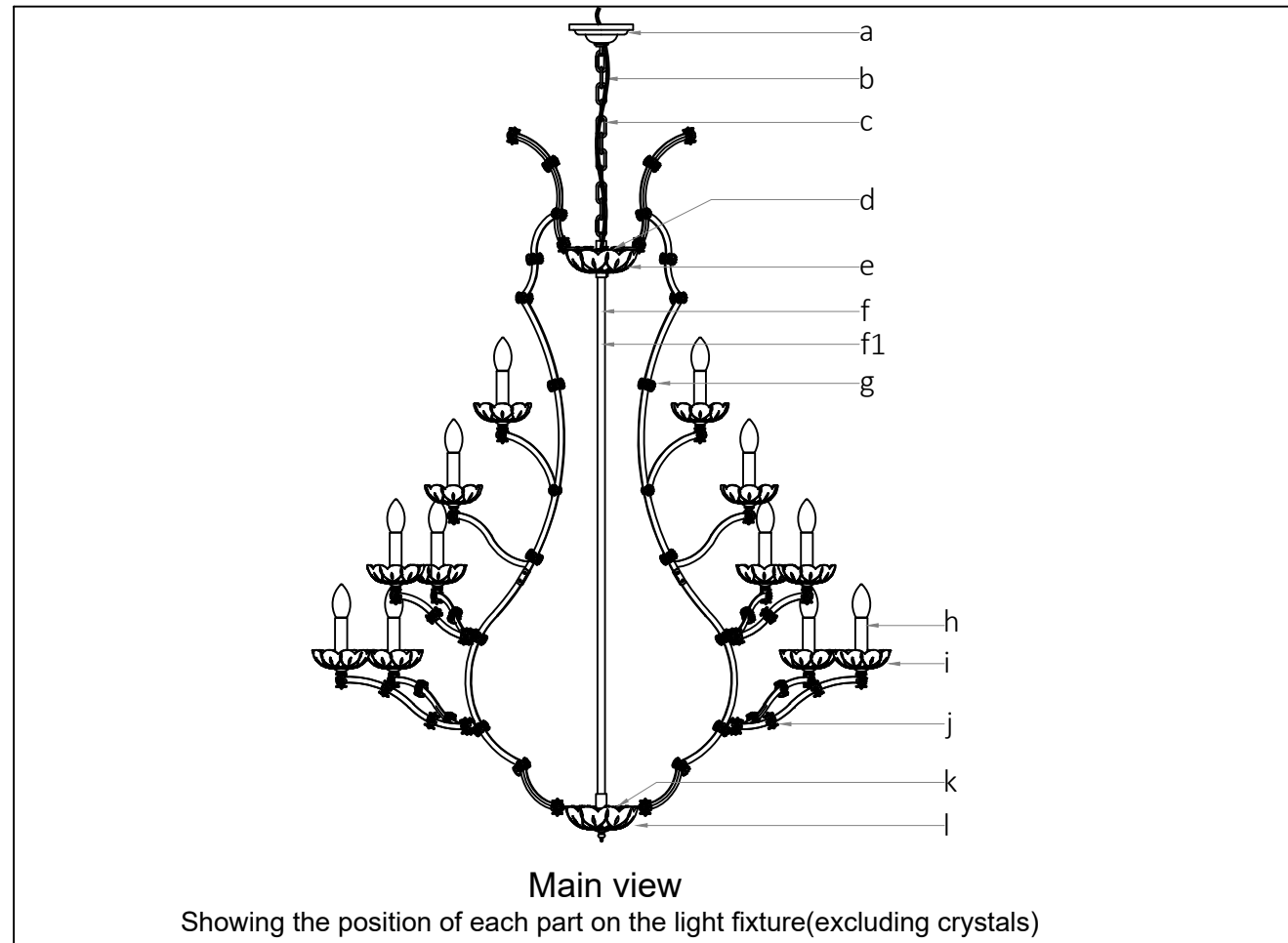
- Take photos of the ceiling/fixture, contact seller for technical support.

## Trouble Shooting

To clean, wipe fixture with soft cloth. Spray from chemical cleaners can discolor the finish of fixture. Do not use scouring pads, powders, steel wool or abrasive paper to clean this fixture.

PACKING LIST

Check the contents to be sure everything is included



**CRYSTAL LIST**

Showing style and quantity of crystals(Crystal strings and crystal pendants are packaged seperately, You need to connect the crystals by yourself)

\*\*\*\*\* NOTES: Crystal pendant of 'A' is 2.5", and others are 3"

**PARTS LIST**

Showing style and quantity of each part as packaging(without crystals)

**OTHERS**

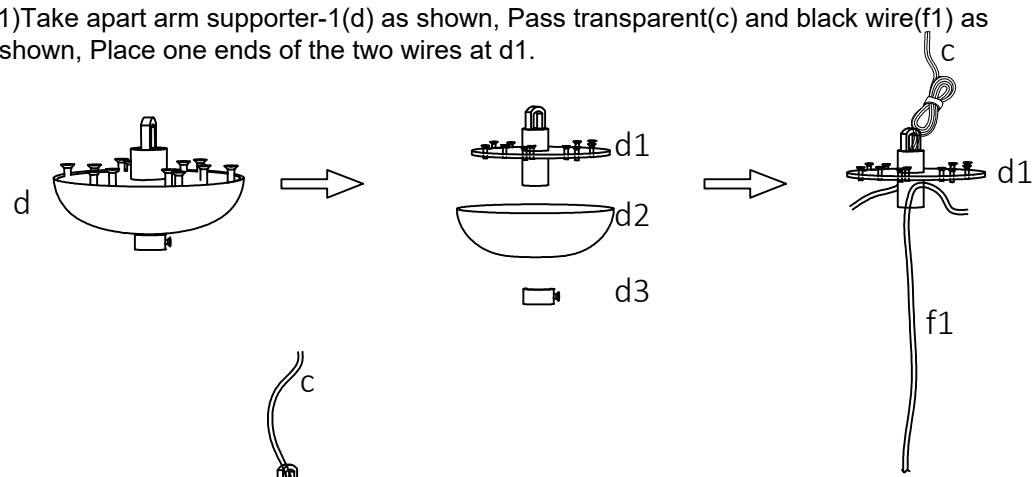
- Main Spare parts  
Crystal beads(40 pcs),Clips(25 pcs),Crystal pendants(8 pcs)
- White gloves(1 pair)
- Fittings bag(1 bag,Screws and other small accessories)
- Installation manual(1 set)

# FIXTURE INSTALLATION

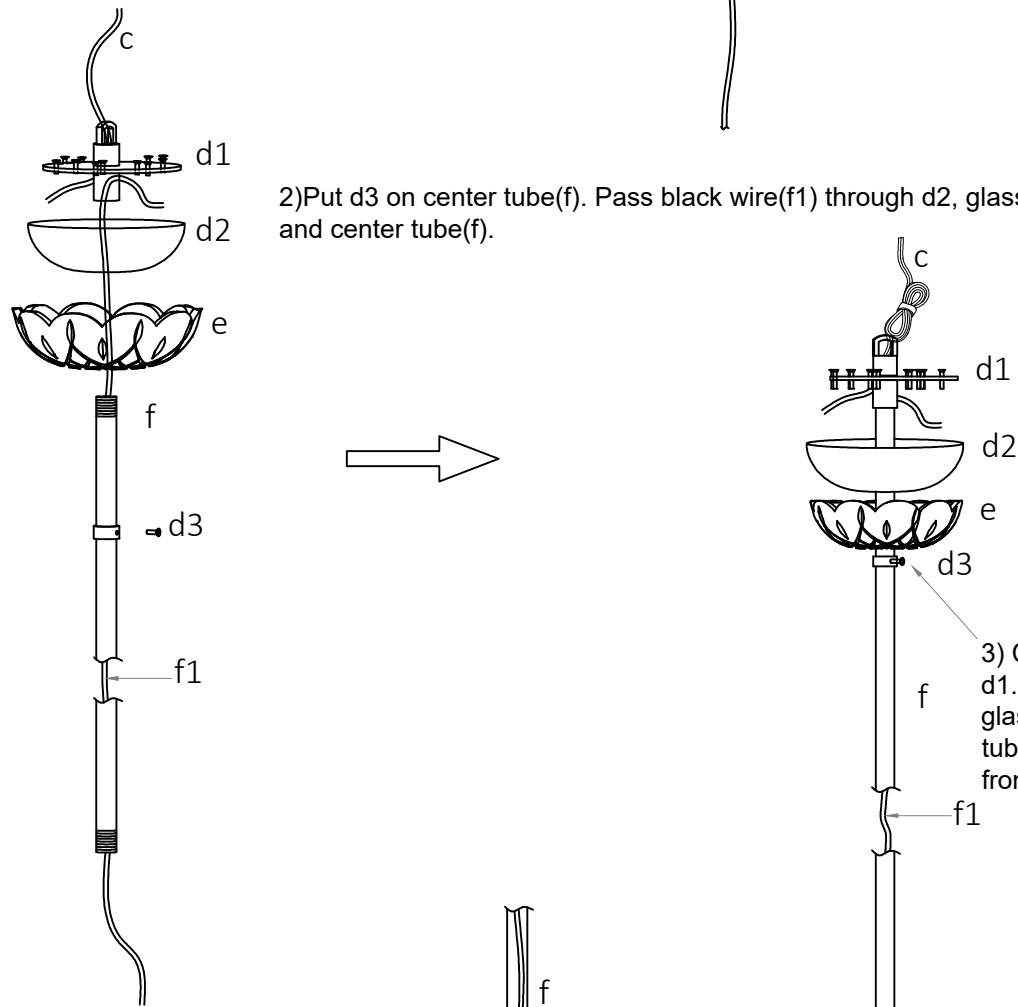
## 1. Assembly of lamp frame

(This section will demonstrate how to assemble the main framework together)

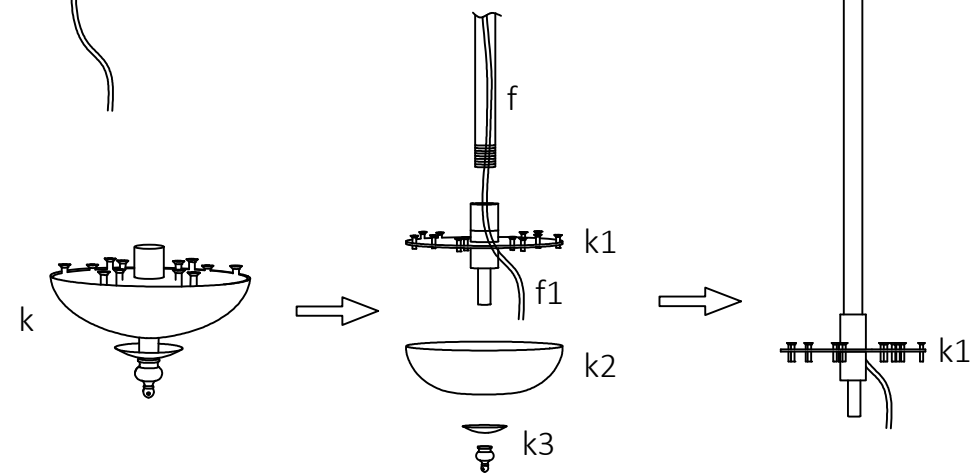
1) Take apart arm supporter-1(d) as shown, Pass transparent(c) and black wire(f1) as shown, Place one ends of the two wires at d1.



2) Put d3 on center tube(f). Pass black wire(f1) through d2, glass dish-1(e) and center tube(f).

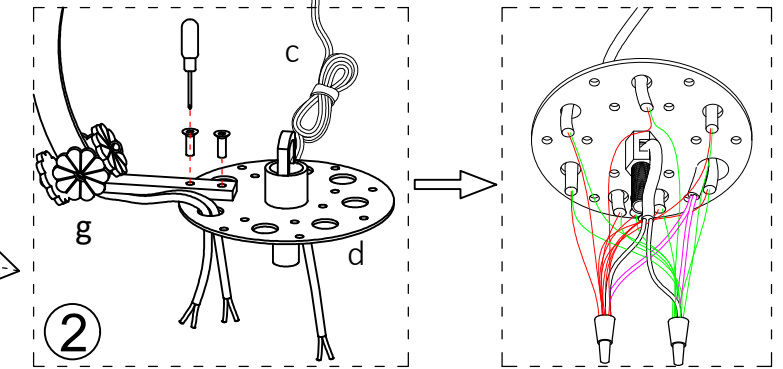


3) Connect center tube(f) on d1. Temporarily fix d2 and glass dish-1(e) on the center tube(f) via d3 to prevent it from falling

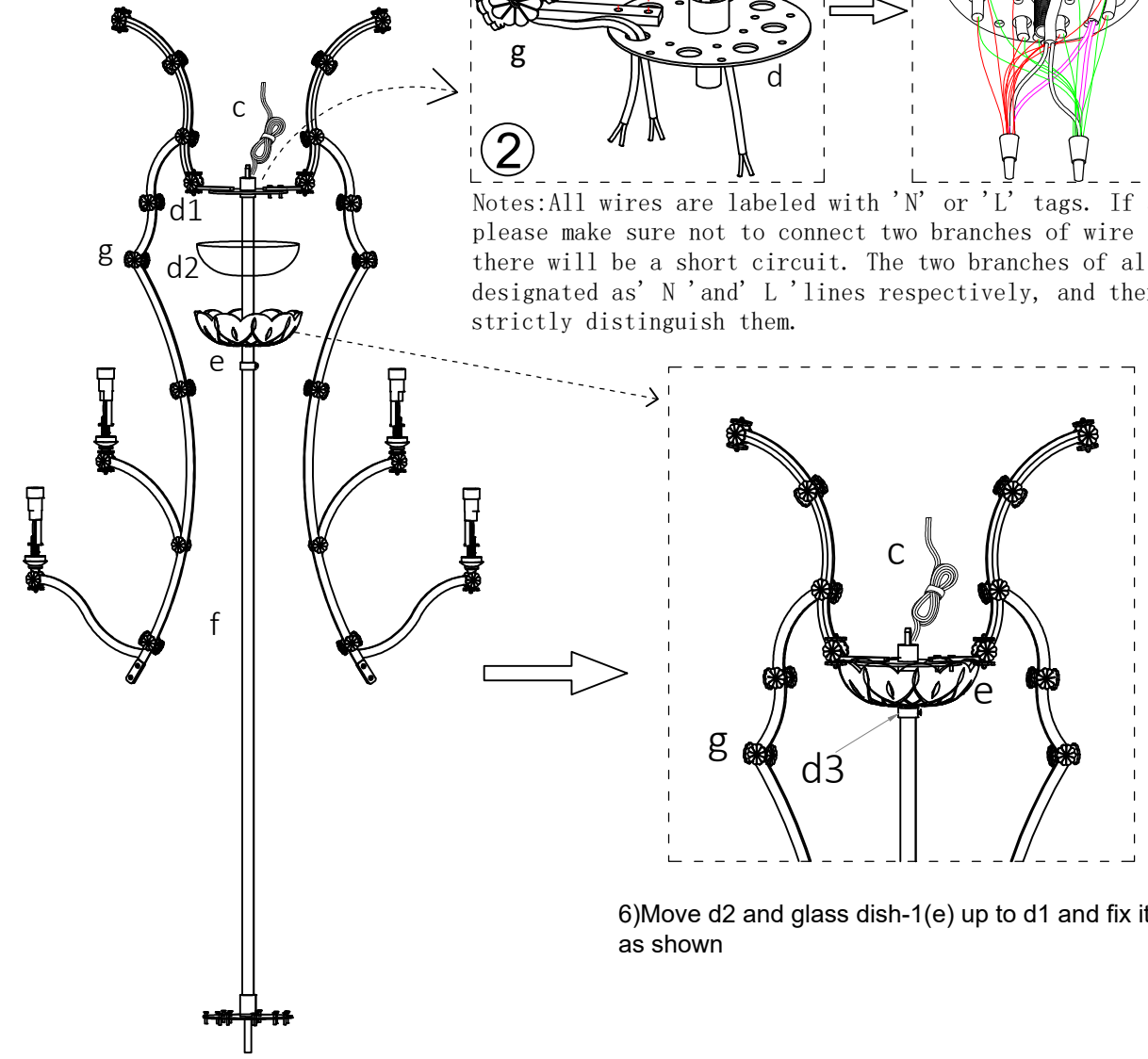


4) Take apart arm supporter-2(k), then pass through black wire(f1) through k1 as shown. connect the other end of center tube(f) with k1

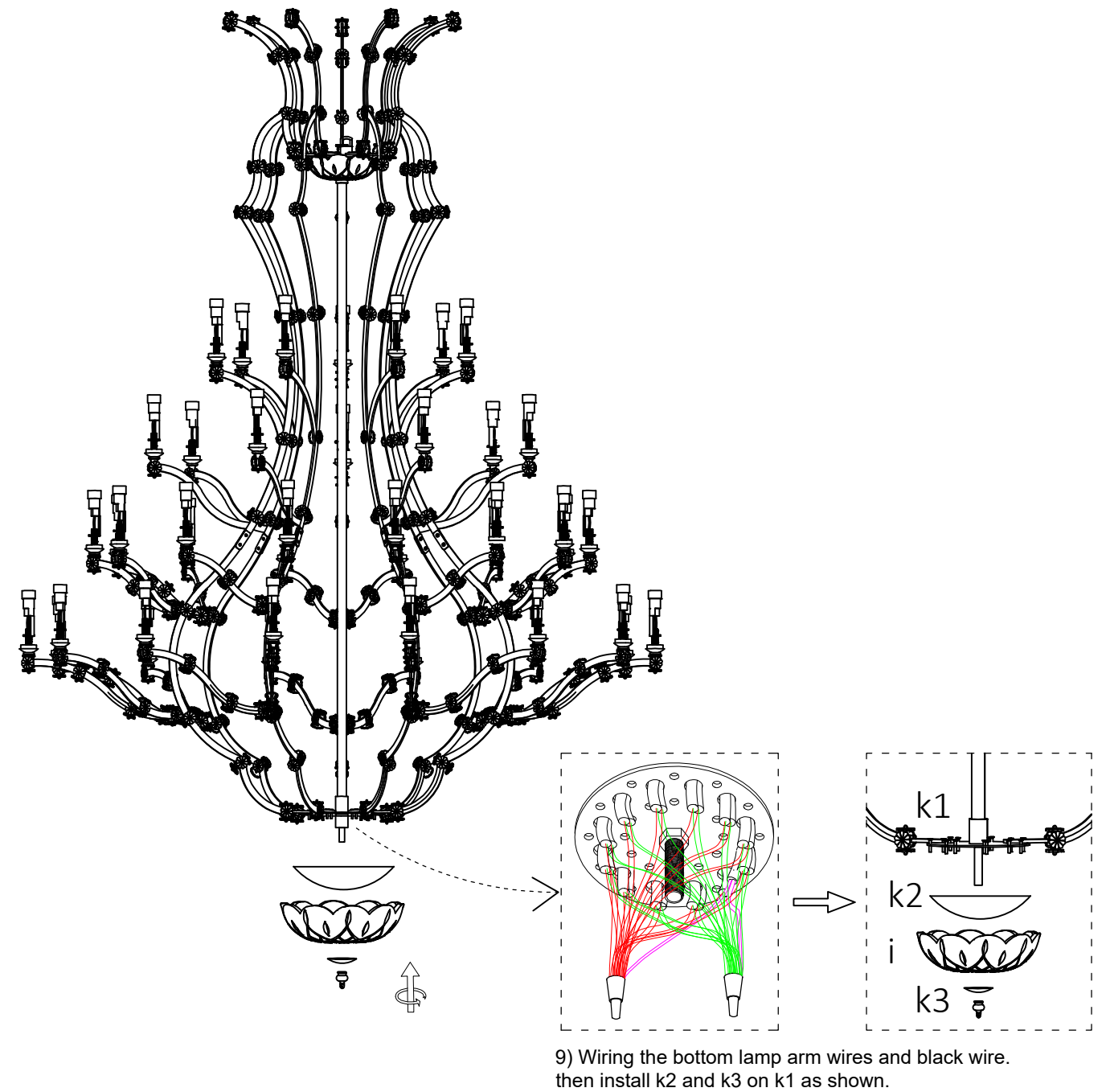
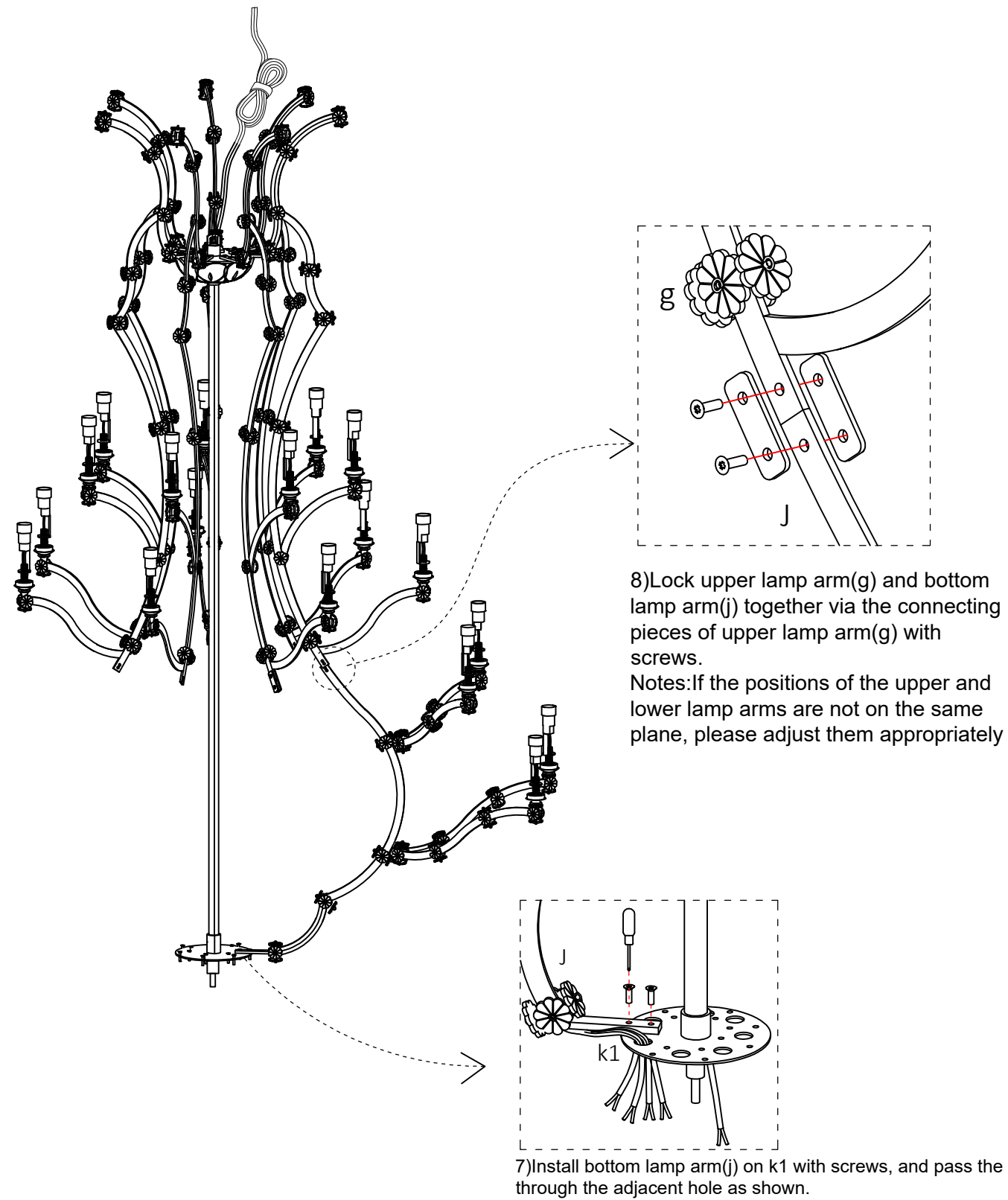
5) Install upper lamp arm(g) on d1 (the metal plate on upper supporter(d)) with screws, pass the wires on the lamp arm through the adjacent hole as shown. then wiring (all wires of lamp arms(g), black wire(f1) and main wire(c)).



Notes: All wires are labeled with 'N' or 'L' tags. If any tags fall off, please make sure not to connect two branches of wire together, otherwise there will be a short circuit. The two branches of all wires are designated as 'N' and 'L' lines respectively, and there is no need to strictly distinguish them.

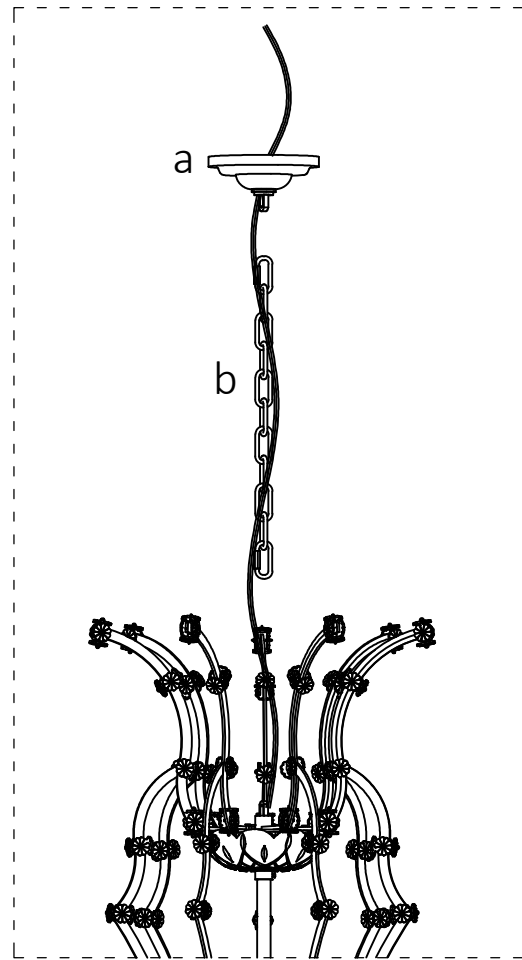


6) Move d2 and glass dish-1(e) up to d1 and fix it with d3 as shown

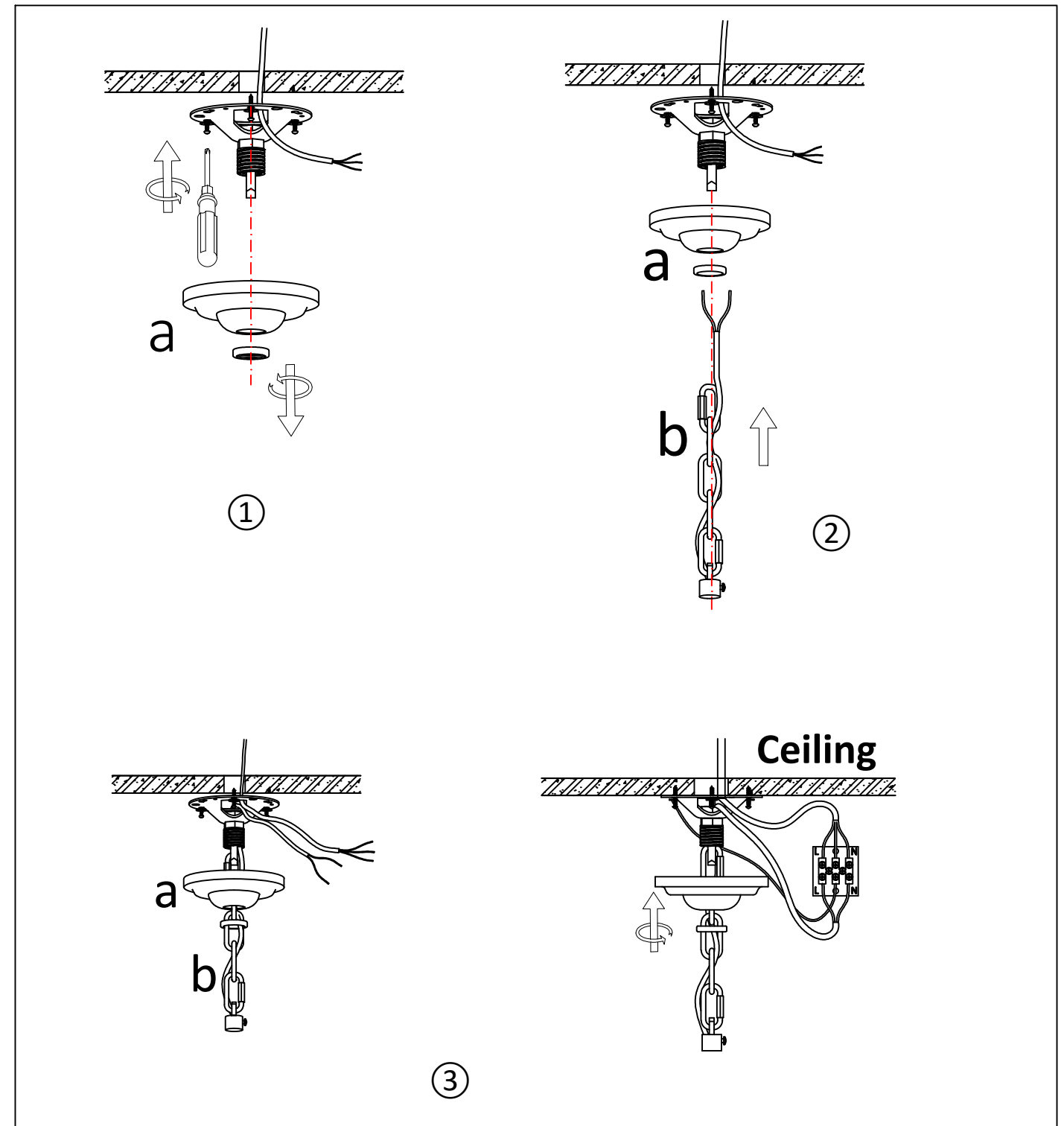
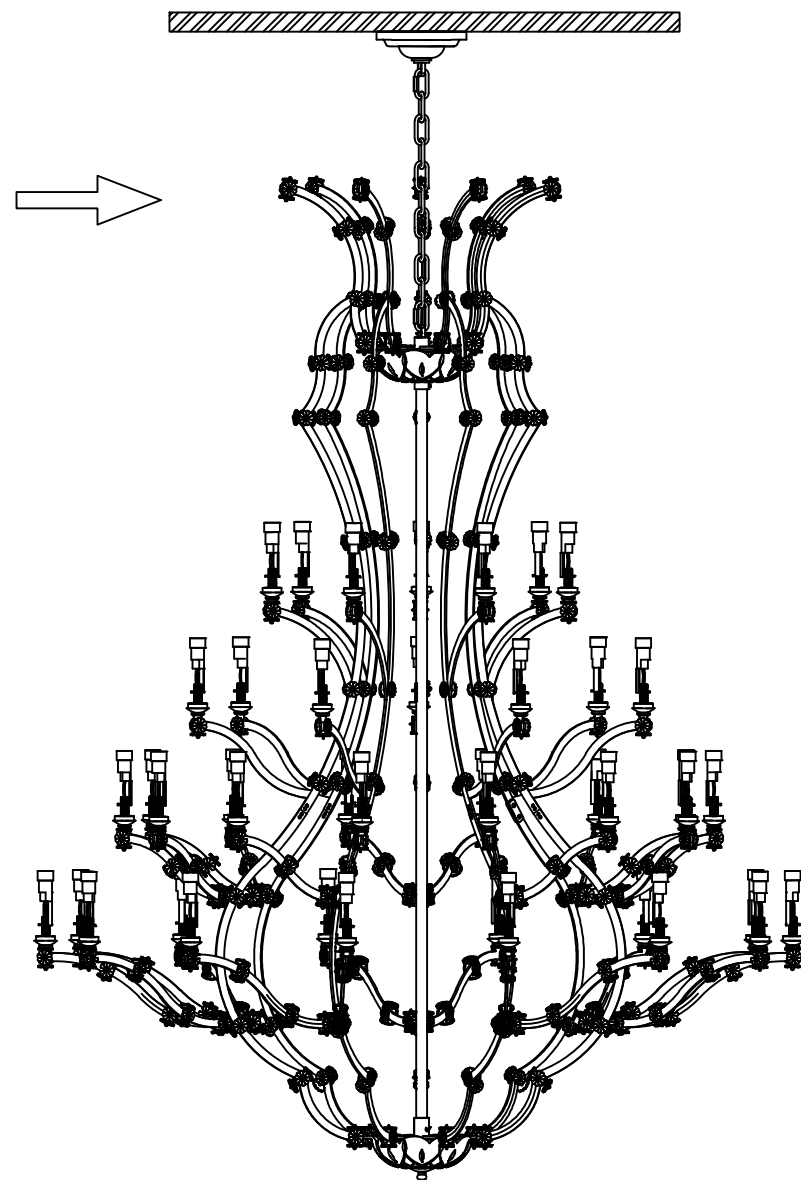


## FIXTURE INSTALLATION

### 2.MOUNTING & WIRING (⚠ Shut off main power at the circuit breaker or fuse panel before installation)



1) Pass main wire of lamp frame through metal chain (b) and ceiling canopy (a). Then connect main wire with housing wire, and install lamp frame on ceiling as following steps



① Take apart mounting bracket from ceiling canopy (a), and install mounting bracket on ceiling with screws.

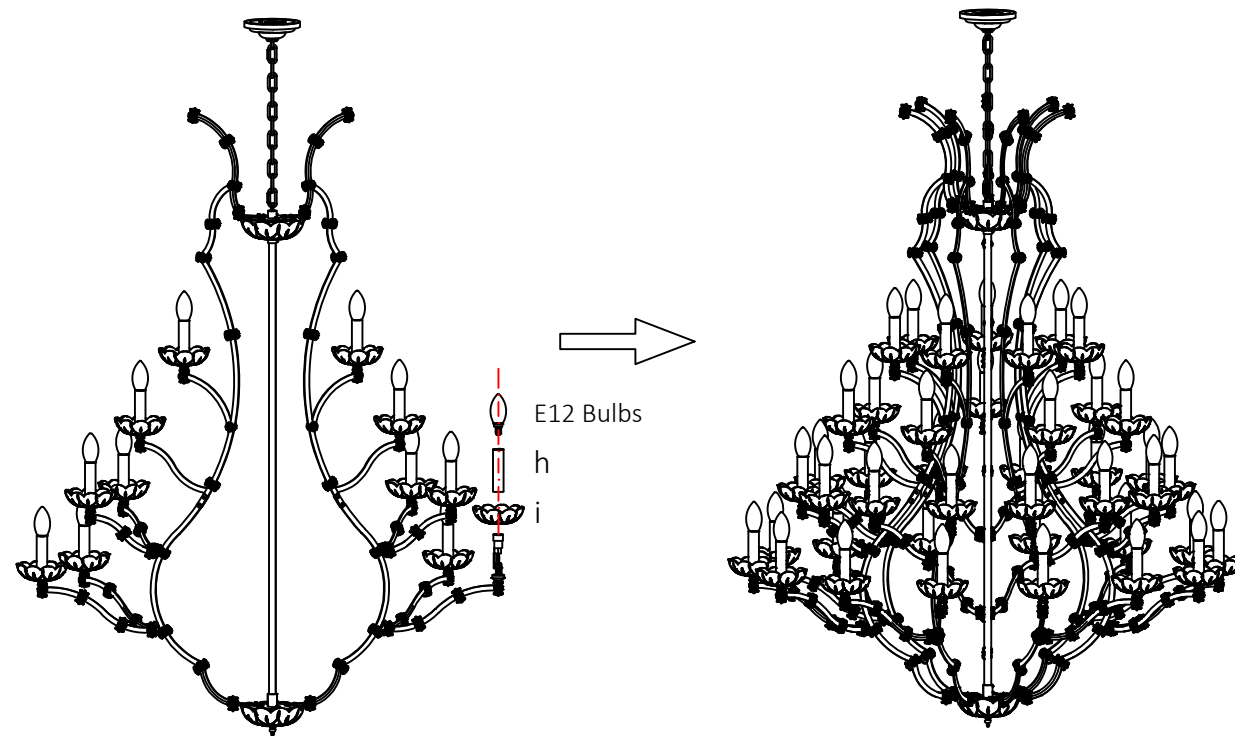
② Pass the main wire and metal chain (b) through ceiling canopy (a), and connect the end of metal chain with mounting bracket.

③ Connect main wire with housing wire, then lock ceiling canopy (a) on mounting bracket (The main wire is a transparent line, with one branch serving as the N line and the other as the L line, and there is no need to strictly distinguish between them, the bare copper wire as ground wire).

## FIXTURE INSTALLATION

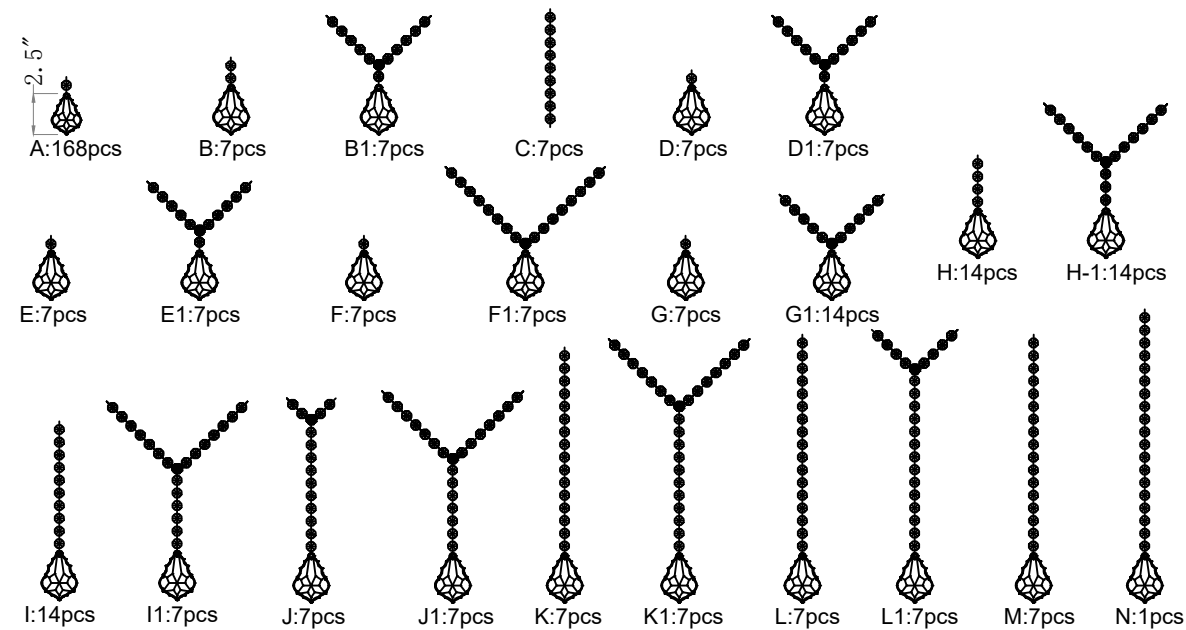
### 3. Installation of lamp holder parts

Then Put Candle tube(d) and Glass Dish-2(e) on lamp holders, and put on E12 bulbs. (If you find that bulb cant be vertical, please remove the candle tube and adjust the lamp holder), power-on test.



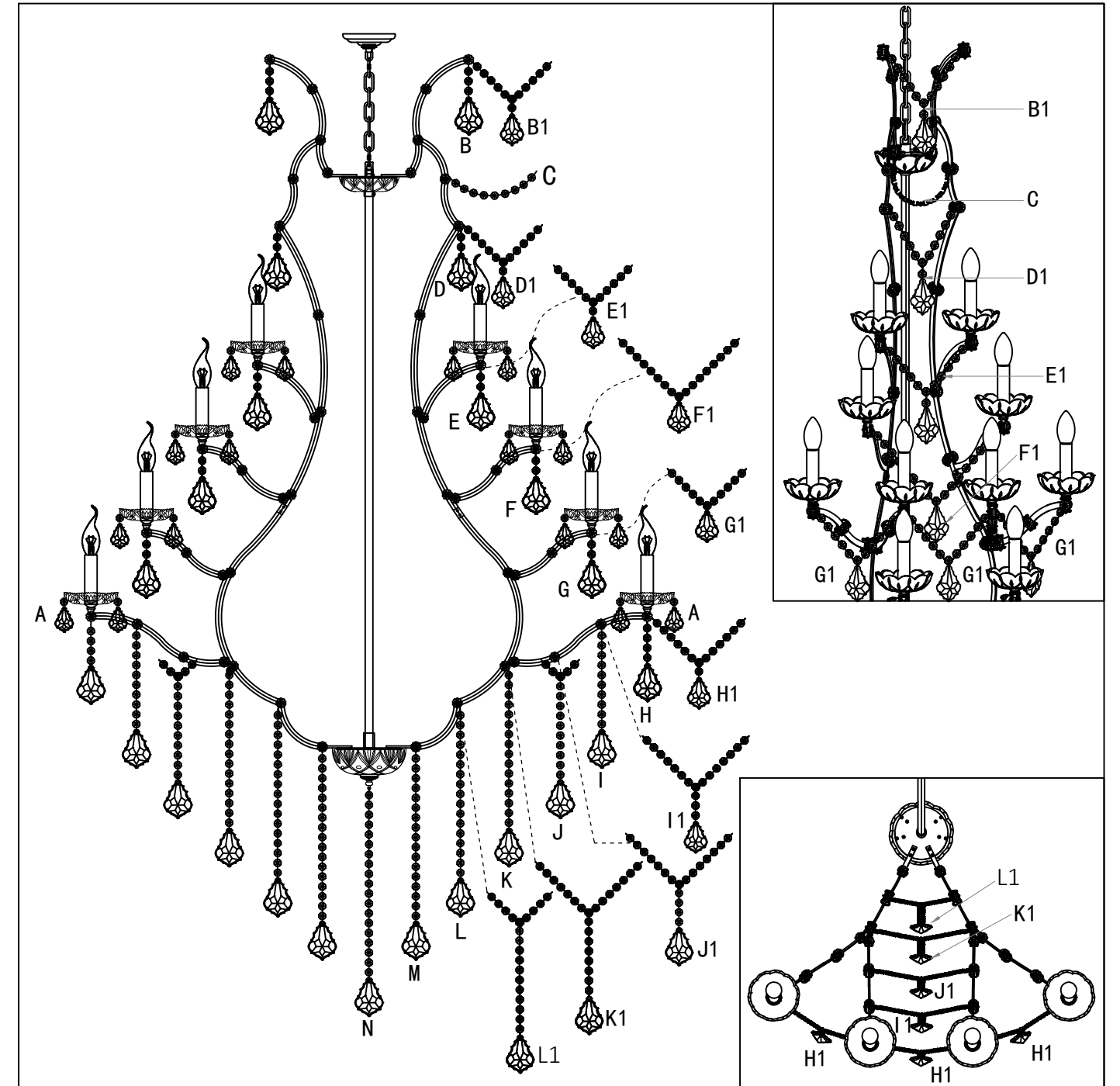
### 4. Hanging Crystals

(This step will take long time, please be patient, you are about to complete a great project.)



1). Connect the crystal pendant with crystal beads strings as shown.

Notes: 1) To prevent confusion, it is recommended to hang the crystals in alphabetical order. 2) 'A' is 2.5" medium size crystal pendant, others are 3" large size crystal pendant. 3) Please be sure to wear gloves when operating.



2). Hang crystals as shown. Please strictly follow the diagram to hang the crystals, as hanging them in the wrong position may result in insufficient of crystals.

Notes:

1) Don't worry if there is any damage of crystals, There are spare parts for crystals in package.

2) Crystals (B1, C, D1, E, F1, G1, H1, I1, J1, K1, L1) is hung between two adjacent lamp arms.

We provide 24-hour customer service, and any questions you have will be answered within 24 hours, if you have any questions or problems, please feel free to contact us, your order ID and details are needed so that our customer service will help you more quickly and accurately! Have a nice day!