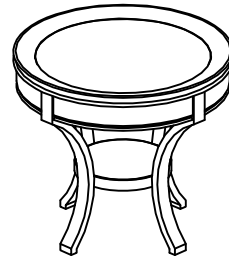


ASSEMBLY INSTRUCTIONS

ROUND END TABLE



TOOLS REQUIRED:

Allen Wrench (supplied, Part # E)

Screw Driver (Not Supplied)

BEFORE YOU START:

1. Check the parts against the parts list to make sure all items are present.
2. Assemble your furniture on a soft, flat surface to avoid scratching the finish.
3. **CAUTION:** Do not over tighten screws, nuts or bolts during assembly.
4. Your furniture may require occasional tightening.

INSTRUCTIONS:

1. Turn the table upside down on a clean soft surface.
2. Attached the leg to the apron of the table top using bolt (B), lock washer (C) and flat washer (D), tighten with the wrench (E). As shown Fig. 1. Repeat for other leg but leave bolts loose for shelf attachment.

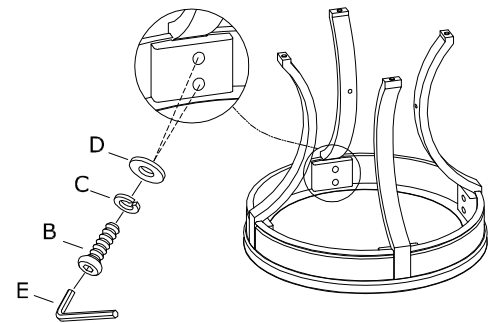


Figure 1

3. Attached the shelf to the legs using bolt (A), lock washer (C) and flat washer (D), tighten with the wrench (E). As shown Fig. 2. Repeat for other but leave bolts loose .

4. Tighten all bolts before using the table.

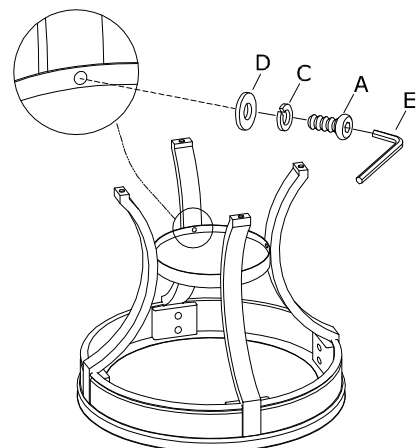


Figure 2

HARDWARE LIST			
NO.	Drawing	Description	Q'TY
A		Allen Bolt ($\phi 1/4$ "x5/8 ")	4pcs
B		Allen Bolt ($\phi 1/4$ "x1-1/2 ")	8pcs
C		1/4"Spring Washer	12pcs
D		1/4"*5/8 Flat Washer	12pcs
E		4mm Wrench	1pc

Thank you for purchasing furniture from us !