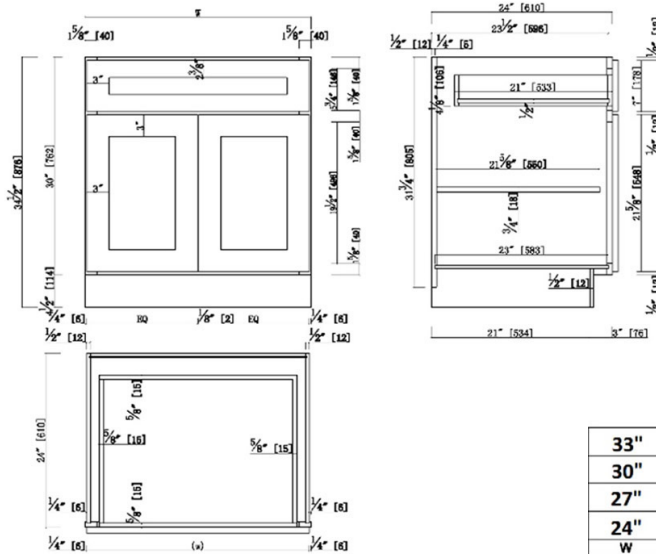


Brookings Unassembled Shaker Sink Base Kitchen Cabinet 30x34.5x24 White



33"	32.5"	16.25"
30"	29.5"	14.75"
27"	26.5"	13.25"
24"	23.5"	11.75"
W	(w)	BQ

SPECIFICATIONS

MATERIAL CONSTRUCTION:	Wood
WOOD SPECIES:	Maple
ASSEMBLED DIMENSIONS:	34.5" H x 30" L x 24" D
ASSEMBLED WEIGHT:	51.51 lbs.
KITCHEN CABINET TYPE:	Base
MOUNTING TYPE:	Floor Mount
CONSTRUCTION TYPE:	Face Frame
HINGE STYLE:	Soft Close
DOOR STYLE:	2 HDF shaker doors

DRAWER DIMENSIONS 1:	N/A
DRAWER DIMENSIONS 2:	N/A
DRAWER DIMENSIONS 3:	N/A
DWR BOX MATERIAL:	N/A
DWR CONSTRUCTION:	N/A
DWR GLIDE:	N/A
FAKE DWR QTY:	1
FAKE DWR LOCATION:	Center

WARRANTY:	1-Year limited warranty
LEGAL FOR SALE IN CALIFORNIA:	Yes
CARB COMPLIANT:	CARB Phase 2
TSCA TITLE IV COMPLIANT:	Yes

NUMBER OF SHELVES:	0
SHELF STYLE:	N/A
ADJUSTIBLE SHELVES:	N/A
SHELF ADJUSTIBILITY INCREMENTS:	N/A
SHELF DIMENSIONS:	N/A
SHELF THICKNESS:	N/A
SHELF MATERIAL:	N/A
FACE FRAME MATERIAL:	Solid Maple
SIDES MATERIAL:	Plywood
BOTTOM MATERIAL:	Plywood
BACK PANEL MATERIAL:	Plywood
BACK BRACE MATERIAL:	Wood
TOE KICK INSET WIDTH:	3"
TOOLS NEEDED FOR INSTALLATION:	Phillips Screwdriver Mallet Wood Glue
FASTENER TYPE:	Wood Screw