


TURNER BIANCA	Brands	Pre-Production Review			
Brand:	BIANCA				
Design Name:	DITSY FLORAL				
BDS:	S9070				
Season:	SS26				
Category:	ADULT BEDDING				
Factory:	LUCKY				
Products:	BEDDING				
Country of Origin	PAKISTAN				
Agreed Pack Fold Image					
Packaging Type Required					
Colour	GREEN				
Colour Standard agreed - CAD, lab dip, swatch, etc.					
FACTORY DESIGN QUALITY FRONT	100% COTTON				
FACTORY DESIGN QUALITY REVERSE	100% COTTON				
FACTORY DESIGN QUALITY TRIMS	FLAT PIPED PCS				
TC OR WEIGHT	200TC				
PRINT TECHNIQUE	STANDARD				
FACE PRINT TYPE	ROTARY				
REVERSE	ROTARY				
PILLOWCASE	ROTARY				
Fill Composition					
Fill Weight					
Sizes Selected	SINGLE DUVET SET	DOUBLE DUVET SET	KING DUVET SET	SUPER KING DUVET SET	
Finishes Face					
Finishes Reverse / Lining					
Technique					
Print Technique Face					
Print Technique Reverse / Lining					
Print Technique Pillowcase Front					
Print Technique Pillowcase Reverse					
Dye Class Face					
Dye Class Reverse / Lining					
Printed on optic?					
Any concerns re. differential shrinkage?					
Any concerns re. cross staining?					
Any compromise on physical performance?					
Is the fabric directional?					
Any batch consistency challenges?					
Any speciality - glitter, pearl, foil?					
Does the speciality print perform to 25 washes?					
Proposed: Care Symbols Wash Instructions Logo's Proposed					
Any additional disclaimers required?					
Red Seals required?					
User Trials required?					
Styling Details					
Additional Styling Details (e.g. width / colour / quilting etc.)					
Cutting (Random / Precision etc)					
Trims Embellishment					
Opening / Fastening					
Fastening Colour - dyed to match?					
Amendments Requested					
Any other comments from the factory					
Any other comments					
Approved Buying Sample Image or CAD layout					

FABRIC SPECIFICATIONS TO BE COMPLETED

**TURNER
BIANCA**

PLEASE COMPLETE THIS DOCUMENT FOR WOVEN, KNITTED & TERRY CONSTRUCTIONS:

TURNER BIANCA FABRIC SPECIFICATION

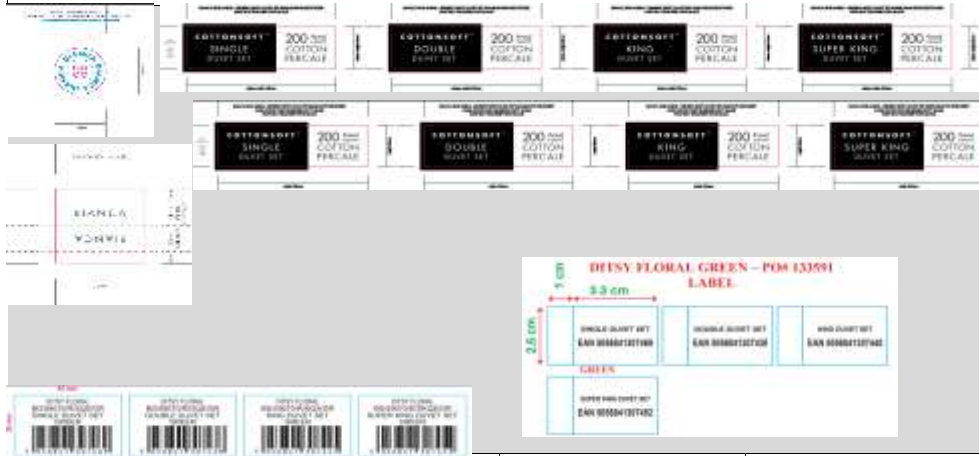
PRODUCT DETAILS					
DATE					
BDS NUMBER			FIBRE COMPOSITION - GRIEGE		
PRODUCT SUPPLIER			FIBRE COMPOSITION - FINISHED		
FABRIC SUPPLIER			FABRIC DESCRIPTION		
FABRIC COUNTRY OF ORIGIN			FABRIC QUALITY		
FIBER COUNTRY OF ORIGIN					
FABRIC CONSTRUCTION DETAILS					
GREIGE SOURCE			DYER/FINISHER		
FINISHING ROUTE					
DYE CLASS	ANY PROMOTIONAL CLAIM				
FOR KNITTED FABRICS.					
GAUGE	YARN COUNT			TYPE OF SPINNING (OE/Ring, Carded/Combed/Compact..)	
WIDTH (cm)	WEIGHT (gsm)			COURSES	WALES
FOR WOVEN FABRICS.					
WIDTH (cm)	WEIGHT (gsm)		WEFT-YARN COUNT		WARP-YARN COUNT
ENDS - GRIEGE	PICKS - GRIEGE		Twist of WEFT		Twist of WARP
ENDS - FINISHED	PICKS - FINISHED		TYPE OF SPINNING (OE/Ring, Carded/Combed/Compact..)		
FOR TOWELLING.					
WIDTH (cm)	WEFT YARN COUNT		WARP YARN COUNT		PILE YARN COUNT
WEIGHT (gsm)	Twist of WEFT		Twist of WARP		Twist of PILE
ENDS	PICKS		TERRY RATIO		LOOP LENGTH (mm)
TYPE OF SPINNING (OE/Ring, Carded/Combed/Compact..)					

PLEASE REQUEST COMPLETION OF THIS DOCUMENT FOR BATH MATS & RUGS:

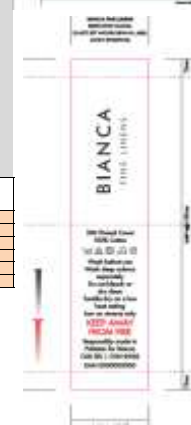
	SPECIFICATION
PILE	
BASE	
COTTON DYES	
POLYESTER THREAD	
PIPING	
YARN TWIST	
FABRIC WEIGHT	
FABRIC STRUCTURE	
STAPLE LENGTH mm	
DYE CLASS USED	
FINISH USED	
PIECE WEIGHT	
PILE YARN COUNT	
PICKS (SPI)	
GAUGE (REED)	
PILE HEIGHT	
QUALITY OF YARN IN PILE	
QUALITY OF YARN IN CANVAS	

Brands		Approved Packaging Soft Copy	
Brand	BIANCA	Technologist	ALEX ARMSTRONG
Design Name	DITSY FLORAL	Product Exec	KAREN WRIGLEY
BDS	S9070	Marketing & Graphics	EMMA BEAMISH
Factory	LUCKY	Date	

APPROVED SOFT COPY IMAGES/ SCREEN SHOTS



STYLE CODE	OPTION	BARCODE	
BD/S9070/R/SQS/GR	SINGLE DUVET SET	5056841307469	
BD/S9070/R/DQS/GR	DOUBLE DUVET SET	5056841307438	
BD/S9070/R/KQS/GR	KING DUVET SET	5056841307445	
BD/S9070/R/SKQS/GR	SUPER KING DUVET SET	5056841307452	



Testing Required	Requirements	Reference	Accredited Testing House	Colour / Item Tested	Test Report Number	Date of report	*Results / Grade	Comments
BS EN ISO 105 E01	Colourfastness to water - Requirement: Change 4 staining 4		BV	Green	(7325)282-0094	Oct 13th 2025	PASS	
BS EN ISO 105 X12	Colourfastness to Rubbing (Wet & Dry) - Requirement: Dry 4, Wet 4		BV	Green	(7325)282-0094	Oct 13th 2025	PASS	
BS EN ISO 105 B02	Colourfastness to Light - Requirement: Standard 4		BV	Green	(7325)282-0094	Oct 13th 2025	PASS	
BS EN ISO 105 C06	Colourfastness to washing - Requirement change 4 staining 4		BV	Green	(7325)282-0094	Oct 13th 2025	PASS	
BS EN ISO 105 D01	Colourfastness to dry cleaning - Requirement: Change 4 Staining 4							
1007/2011/EU	Fibre composition							
EN ISO 6330:2012	Dimensional Stability to Washing- Requirement +/- 3% for synthetic blends & +/-5% for cotton							
Commercial process	Dimensional stability to Dry Cleaning - Requirement: +/-3%							
EN ISO 6330:2012	Appearance after Dry cleaning (1 wash as per care label) - Requirement +/-3% and general appearance graded as satisfactory.							
EN ISO 6330:2012	Appearance after Machine Washing (1 wash as per care label) - Requirement +/-3% and general appearance graded as satisfactory.							
EN ISO 13934-2	Tensile Strength - Requirement 25KG							
EN ISO 13937-1	Tear Strength - Requirement 1000cN							
EN ISO 13935-2	Seam strength - Requirement: >120N							
EN ISO 13936-1	Seam Slippage - Requirement: 6mm Seam opening 12KG Load							
EN ISO 12945-2	Pilling Resistance - Requirement 2,000 revs, Grade 4							

**TURNER
BIANCA**

Brands

Brand	BIANCA	Technologist	ALEX ARMSTRONG
Design Name	DITSY FLORAL	Product Exec	KAREN WRIGLEY
BDS	59070	Designer	EMMA BEAMISH
Factory	LUCKY	Date	

GENERAL COMMENTS/ OBSERVATIONS/ APPROVALS

13/10/25
needle holes on reverse hem of pc's.
Bianca brand label very poorly sewn in with loose stitching.

TB TECHNICAL / COMMERCIAL / DESIGN COMMENTS

APPROVED **REJECTED**

PACKAGING CHECKLIST

Product Exec	
Technologist	
CHECKS	COMMENTS
Insert wording and spelling matches approved soft copy	
Insert matches colour standard	
Photography matches product	
Pack Size	
Fold Correct	
Fibre composition stated in EOP or BOP	
Fibre composition stated on care label	
Stated fibre composition is correct	
Care icons correct on BOP	
Care icons correct on care label	
Positioning of labels	
Child safety warning correct, clear and colour fast	
Correct text use of 3rd party info	
Correct TB logo's	
Correct 3rd party logo's	

GOLD SEAL LOG

GOLD SEAL - Images / Observations/ Comments/ Actions

