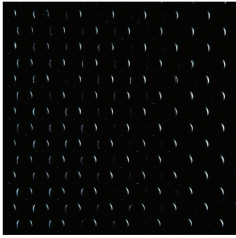




# TP7144 17 Master Equipment X-Tend Electric Table Black



Tabletop

## Accessories Included:

- Foldable Grooming Arm with Clamp
- 18" Grooming Loop Black
- Leg Levelers (4)

## Materials & Color:

- Table Frame: 17 gauge, 1.3mm thick steel. Powder-coated graphite finish.
- Tabletop: ¾" MDF with black rubber matting. Aluminum trim.
- Grooming Arm: Powder-coated graphite finish. Horizontal Bar is 18 gauge, 1.2mm thick steel. Vertical Bar is 18 gauge, 1.2mm thick steel. Clamp is 18 gauge, 1.2mm thick iron with graphite powder-coated finish. Small and large knobs are black polypropylene. Screws are galvanized iron.
- Pedals: Black rubber.

## Voltage & Power:

- Rated Power: 82Watts
- Input Voltage: 110Volts
- Output Voltage: 36Volts

## Other Features:

- Weight Capacity: 220 lbs
- Rate of Descent: 1.18 inches/second.
- Rising Rate: 0.95 inches/second.

