

**EVOLUTION® 6' X 36"**

Comfortable bathing design with form-fitted backrest and molded-in armrests

☐ **7236VC Whirlpool w/EverClean® System**

- EverClean® System
- Acrylic with fiberglass reinforcement
- 2.1 HP self-draining pump/motor
- Ten flow adjustable jets including:
  - Two adjustable Comfort Jets™ Hi Flo
  - Eight adjustable Comfort Jets™
- Three silent air volume controls
- Side-mounted On/Off control
- Deep Soak Overflow Drain for maximum water depth
- Complete factory installed and tested whirlpool system
- Self leveling feet
- Undermount installation option
- Quick connect whirlpool heater system (must order whirlpool heater separately)

☐ **7236V Whirlpool**

- Same as above without the EverClean® System

☐ **7236V.002 Bathing Pool**

**Nominal Dimensions:**

72" x 36" x 21-1/4"

(1829 x 914 x 540mm)

American Standard whirlpools and air baths with EverClean® incorporate a safe and effective silver-ion antimicrobial additive right into the circulation piping to protect the pipes from mold, mildew, algae and fungus that could cause deterioration or staining of the pipes.

**Compliance Certifications -**

**Meets or Exceeds the Following Specifications:**

- Underwriters Laboratories - Hydromassage Bathtubs UL 1795
- ASME A112.19.7M for Whirlpool Appliances
- ANSI Z124.1 for Plastic Bathtubs
- ASTM E162 for Flammability
- NFPA 258 for Smoke Density

SEE REVERSE FOR ROUGHING-IN DIMENSIONS  
AND PRODUCT SPECIFICATIONS



**Components Required:**

- ☐ Bath Filler\*: (specify finish)
- ☐ Bath Drain: 1599.205.XXX (specify color)

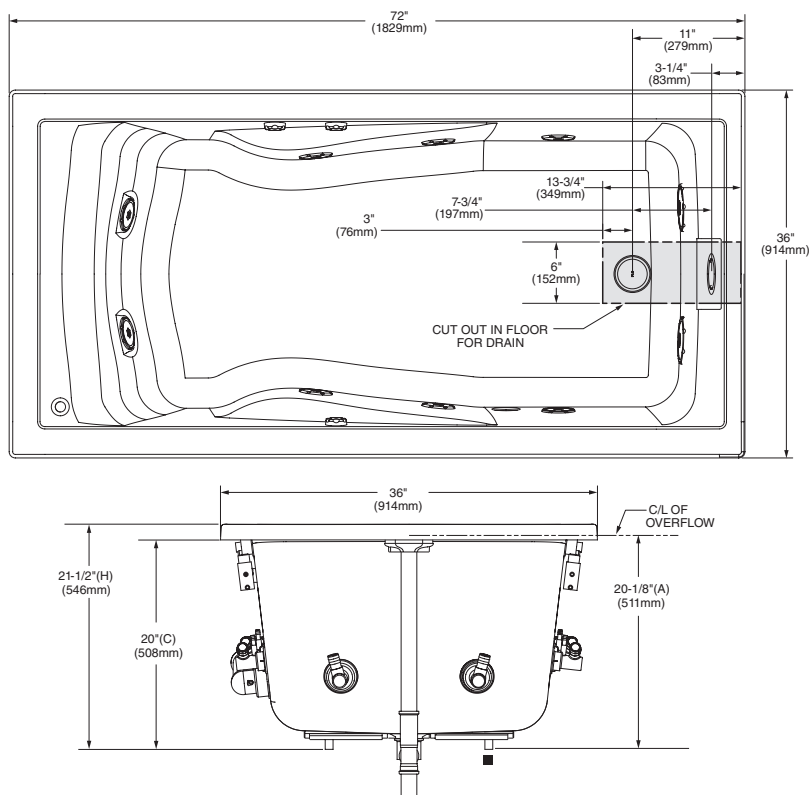
**Custom Accessories Available:**

- ☐ Six Foot Apron: 9271.019.XXX (specify color)
- ☐ Safe-T-Heater Whirlpool Heater: 9075.120
- ☐ Tile Bead Kit: 751755-100

\* See American Standard Faucet Selector

For color/finish availability and other faucet choices, please see the Product Selector and Pricing Guide.

**NOTE:** Whirlpool Heater is designed to maintain water temperature during operation. It will not heat cold water to desired bathing temperature.



**GENERAL SPECIFICATIONS FOR 7236V WHIRLPOOL**

INSTALLED SIZE \_\_\_\_\_ 72 x 36 x 21-1/2 In. (1829 x 914 x 546mm)  
 WEIGHT \_\_\_\_\_ 106 Lbs. (48 Kg.)  
 WEIGHT w/WATER \_\_\_\_\_ 1031 Lbs. (467 Kg.)  
 GAL. TO OVERFLOW \_\_\_\_\_ 111 Gal. (420 L)  
 WHIRLPOOL MIN. OPERATING VOL. \_\_\_\_\_ 53 Gal. (201 L)  
 BATHING WELL AT SUMP \_\_\_\_\_ 53-1/2 x 26-1/4 In. (1359 x 667mm)  
 BATHING WELL AT RIM \_\_\_\_\_ 64-1/2 x 30 In. (1638 x 762mm)  
 WATER DEPTH TO OVERFLOW \_\_\_\_\_ 18-1/2 In. (470mm)  
 FLOOR LOADING \_\_\_\_\_ 57 Lbs./Sq.Ft. (280 Kgs./Sq.m)  
 (PROJECTED AREA)

**WHIRLPOOL ELECTRICAL SPECIFICATIONS**

PUMP \_\_\_\_\_ 2.1 HP, 14.4 AMPS, 120V.

**GENERAL SPECIFICATIONS FOR 7236V BATHING POOL**

INSTALLED SIZE \_\_\_\_\_ 72 x 36 x 21-1/2 (1829 x 914 x 546mm)  
 WEIGHT \_\_\_\_\_ 91 Lbs. (41 Kg.)  
 WEIGHT w/WATER \_\_\_\_\_ 1016 Lbs. (461 Kg.)  
 GAL. TO OVERFLOW \_\_\_\_\_ 111 Gal. (420 L.)  
 BATHING WELL AT SUMP \_\_\_\_\_ 53-1/2 x 26-1/4 In. (1359 x 667mm)  
 BATHING WELL AT RIM \_\_\_\_\_ 64-1/2 x 30 In. (1638 x 762mm)  
 WATER DEPTH TO OVERFLOW \_\_\_\_\_ 18-1/2 (470mm)  
 FLOOR LOADING \_\_\_\_\_ 56 Lbs./Sq.Ft. (275 Kgs./Sq.m)  
 (PROJECTED AREA)

**NOTES:**

BATH CAN BE INSTALLED EITHER ABOVE OR BELOW FLOOR LINE AS PIER, ISLAND OR PENINSULA TYPE INSTALLATION. SUMP OF BATH IS SUPPORTED BY INTEGRAL FEET. NO ADDITIONAL SUPPORT REQUIRED. ENCLOSING MATERIAL BY OTHERS.

■ REFER TO INSTALLATION INSTRUCTIONS SUPPLIED WITH WHIRLPOOL, DECK MOUNTED SPOUT AND INTEGRATED BATH FILLER FOR ADDITIONAL INFORMATION.

OPTIONAL 3-WALL TILING BEAD KIT MODEL No. 751755-100 AND 6FT-APRON MODEL No. 9271.019 MUST BE ORDERED SEPARATELY

PROVIDE SUITABLE REINFORCEMENT FOR ALL SUPPORTS.

**IMPORTANT:** Dimensions of fixtures are nominal and may vary within the range of tolerances established by ANSI Standard Z124.1 and A112.19.7. These measurements are subject to change or cancellation. No responsibility is assumed for use of superseded or voided leaflet.