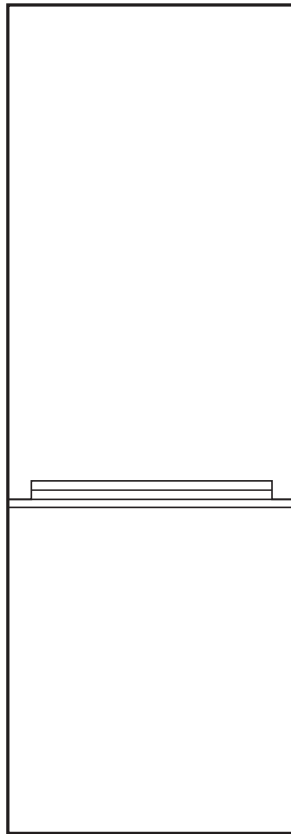


Refrigerator

INSTALLATION INSTRUCTIONS





Important Safety Information

READ AND FOLLOW ALL SAFETY INSTRUCTIONS

SAFETY REQUIREMENTS

DANGER: Risk of fire or explosion. Flammable refrigerant used. Do not puncture refrigerant tubing.

- Ensure that servicing is done by factory authorized service personnel, to minimize product damage or safety issues.
- Consult repair manual or owner's guide before attempting to service this product. All safety precautions must be followed.
- Dispose of properly in accordance with federal or local regulations.
- Follow handling instructions carefully.
- Do not store explosive substances such as aerosol cans with a flammable propellant in this appliance.

WARNING:

- Keep ventilation openings, in the appliance enclosure or in the built-in structure, clear of obstruction.
- Do not use mechanical devices or other means to accelerate the defrosting process, other than those recommended by the manufacturer.
- Do not damage the refrigerant circuit.
- Do not use electrical appliances inside the food storage compartments of the appliance, unless they are of the type recommended by the manufacturer.

CAUTION: Children should be supervised to ensure that they do not play with the appliance.

DANGER: Risk of child entrapment. Before throwing away an old appliance:

- Remove the door or lid.
- Leave shelves in place so that children may not easily climb inside.

This appliance is not intended for use by persons (including children) whose physical, sensory or mental capabilities may be different or reduced, or who lack experience or knowledge, unless such persons receive supervision or training to operate the appliance by a person responsible for their safety.

This appliance is intended to be used in household and similar applications such as:

- Staff kitchen areas in shops, offices and other working environments;
- Farm houses and by clients in hotels, motels and other residential type environments;
- Bed and breakfast type environments;
- Catering and similar non-retail applications.

GROUNDING INSTRUCTIONS

This appliance must be grounded. Grounding reduces the risk of electrical shock by providing an escape wire for the electrical current.

This appliance has a cord that has a grounding wire with a 3-prong plug. The power cord must be plugged into an outlet that is properly grounded. If the outlet is a 2-prong wall outlet, it must be replaced with a properly grounded 3-prong wall outlet. The serial rating plate indicates the voltage and frequency the appliance is designed for.

WARNING - Improper use of the grounding plug can result in a risk of electric shock. Consult a qualified electrician or service agent if the grounding instructions are not completely understood, or if doubt exists as to whether the appliance is properly grounded.

Do not connect your appliance to extension cords or together with another appliance in the same wall outlet. Do not splice the power cord. Do not under any circumstances cut or remove the third ground prong from the power cord. Do not use extension cords or ungrounded (two prongs) adapters.

If the power supply cord is damaged, it must be replaced by the manufacturer, its service agent or similar qualified person in order to avoid hazard.

SAVE THESE INSTRUCTIONS!

INSTALLATION INSTRUCTIONS

LOCATION

- Two people should be used when moving the appliance.
- Remove interior and exterior packaging prior to installation. Wipe the outside of the appliance with a soft, dry cloth and the inside with a lukewarm wet cloth.
- Place the appliance on a floor that is strong enough to support it when it is fully loaded.
- Do not place the appliance in direct sunlight or near sources of heat, such as a stove or heater, as this can increase electrical consumption. Extreme cold ambient temperatures may also cause the appliance to perform improperly.
- Do not use the appliance near water, for example in a wet basement or near a sink.
- Before connecting the appliance to a power source, let it stand upright for approximately 6 hours. This will reduce the possibility of a malfunction in the cooling system from handling during transportation.
- This appliance is 60.2 cm (23.7 inches) wide by 185.2 cm (72.9 inches) high by 60 cm (23.6 inches) deep.
- Allow 5 cm (2 inches) of space between the back, sides and top of the appliance and all adjacent walls.
- This appliance is intended for free-standing installation only and is not intended to be built into a cabinet or counter. Building in this appliance can cause it to malfunction.

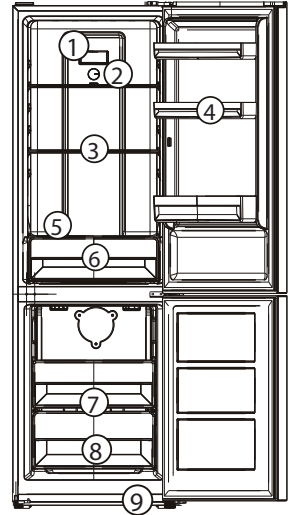
IMPORTANT

This refrigerator is intended for household use only. It is not designed for outside installation, including anywhere that is not temperature controlled, e.g., garages, porches, vehicles, etc.

OPERATING INSTRUCTIONS

FEATURES

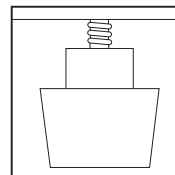
1. LED light
2. Temperature control knob
3. Refrigerator shelves
4. Door shelves
5. Crisper cover
6. Crisper
7. Freezer shelves
8. Freezer drawers
9. Leveling feet



LEVELING INSTRUCTIONS

There are adjustable legs on the bottom of the cabinet that can be turned up or down to ensure that the appliance is level.

1. Turn the leveling leg counter-clockwise as far as it will go, until the top of the foot is touching the bottom of the cabinet.
2. Slowly turn the leveling leg clockwise until the appliance is level.

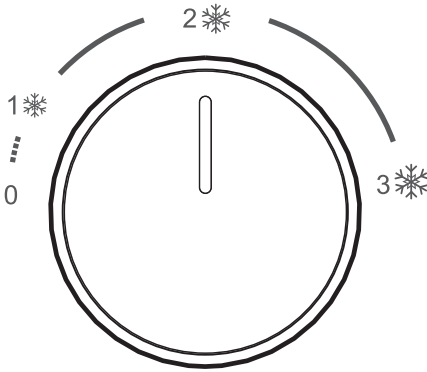


OPERATING INSTRUCTIONS

REFRIGERATOR TEMPERATURE SELECTION

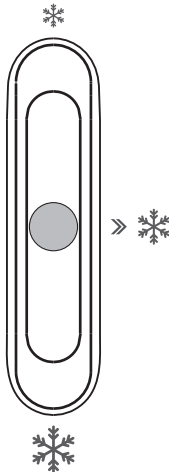
The temperature of the appliance can be adjusted by turning the thermostat dial. The number 2 setting is recommended.

Internal temperature of the appliance can vary based on ambient temperature, the quantity of items stored and how frequently the door is opened.



FREEZER TEMPERATURE SELECTION

The temperature control slider on the back of the refrigerator compartment is used to control the temperature in the freezer compartment. It is recommended to keep this slider in the middle position.



NOTES

- Adjusting the slider to the smallest snowflake will set a higher temperature in the freezer compartment.
- Adjusting the slider to the largest snowflake will set a lower temperature in the freezer compartment.
- The middle position on the slider is recommended for normal daily use.

TEMPERATURE RECOMMENDATION

- Summer (ambient temperature above 38°C/100°F):
 - Set the freezer slider to the middle position.
 - Set the refrigerator dial to colder or coldest.
- Normal:
 - Set the freezer slider to the middle position.
 - Set the refrigerator dial to colder.
- Winter (ambient temperature below 16°C/60°F):
 - Set the freezer slider to the coldest position.
 - Set the refrigerator dial to colder or coldest.
 - Do not set the freezer slider to the coldest position at the refrigerator dial to the cold position at the same time during winter.

IMPORTANT

Ensure that the door is fully closed when the appliance is in operation. Failure to fully close the door can lead to excessive condensation and potential water damage to flooring under the appliance. Carlton Plumbing will not be responsible for damages from misuse.

OPERATING INSTRUCTIONS

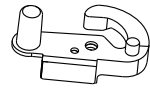
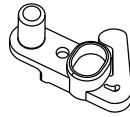
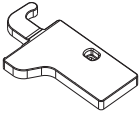
DOOR REVERSAL INSTRUCTIONS

If the appliance is placed on its back or side for any length of time during this process, it must be allowed to remain upright for 6 hours before plugging it in to avoid damage to the internal components.

Before beginning, ensure that you have a flat screwdriver, a cross screwdriver, a wrench and the components in the accessory bag as follows:

1. Left door hinge cover
2. Left upper door closer
3. Left lower door closer

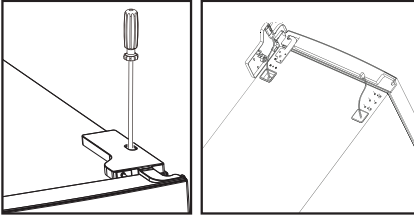
NOTE: When reinstalling the refrigerator and freezer doors, ensure that the rubber gaskets are making a good seal with the cabinet before tightening the screws.



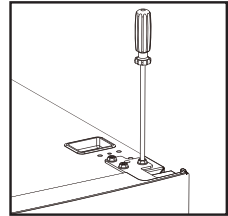
1. Unscrew the top hinge cover and disconnect the connectors of the door switch and harness.
2. Remove the top hinge. Remove the refrigerator door from the cabinet. Place the door on a blanket or other similar surface to avoid damage.
3. Remove the door switch from the right hinge cover. Install the door switch on the left hinge cover found in the accessory bag.
4. Remove the screw cover from the top left side of the cabinet.
5. Remove the center hinge. Remove the freezer door from the cabinet. Place the door on a blanket or other similar surface to avoid damage.
6. Lay the appliance on its back, on a blanket or similar item to avoid damaging the flooring. Remove the adjustable feet and the lower hinge.
7. Remove the hinge pins from the upper and lower hinges with a wrench. Flip the hinges over and reinstall the hinge pins on the other side of the hinges.
8. Install the lower hinge on the left side of the cabinet. Install the adjustable feet.
9. Remove the rubber gaskets from the refrigerator and freezer doors, rotate them 180° and reinstall them.
10. Remove the upper and lower door closers from the right side of the refrigerator and freezer doors. Install the left door closers found in the accessory bag on the left sides of the refrigerator and freezer doors.
11. Install the freezer door on the cabinet. Install the center hinge.
12. Install the refrigerator door on the cabinet. Install the top hinge. Reconnect the door switch and harness connectors.
13. Install the screw cover on the top right side of the cabinet.

OPERATING INSTRUCTIONS

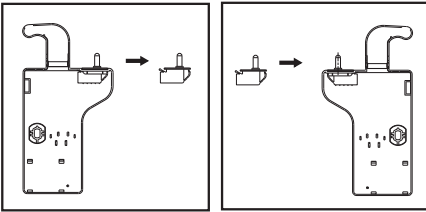
1



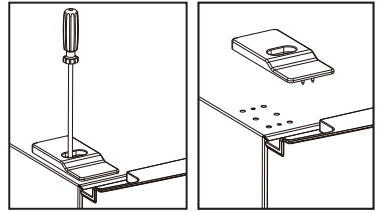
2



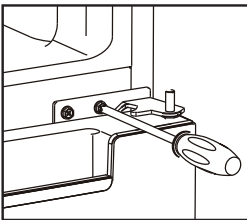
3



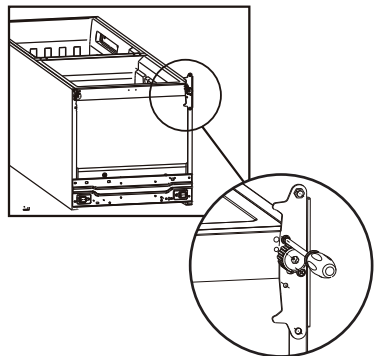
4



5



6



FREQUENTLY ASKED QUESTIONS

What are the watts and amps?

Please refer to the rating plate located on the back of the cabinet.

Can I use an extension cord?

No, an extension cord may not be used.

I am having trouble opening the door; why?

The refrigerator door may be difficult to open immediately after closing it. This is normal and is due to the pressure difference between the cold interior of the refrigerator and the warm air that has just entered the refrigerator when it was opened. The pressure will equalize within a few minutes.

I had my fridge on its back side to bring it home. Can I use it right away?

Please allow it to sit upright for 6 hours before plugging it in.

The refrigerator smells like new plastic. What can I do?

It is common for new appliances to have a slight plastic smell. Ensure that you have removed all packing material from the fridge. Clean the inside of the cabinet by following the cleaning instructions. Place an open box of baking soda in the refrigerator to absorb any remaining odour.

TROUBLESHOOTING

No power

- A fuse may be blown or the circuit breaker tripped
- Plug not fully inserted into the wall outlet

Internal temperature not cold enough

- Temperature setting is too warm
- The door is not shut properly or opened excessively
- Recently added a large quantity of warm food to the cabinet
- Close proximity to heat source or direct sunlight
- Ambient temperature or humidity is very high

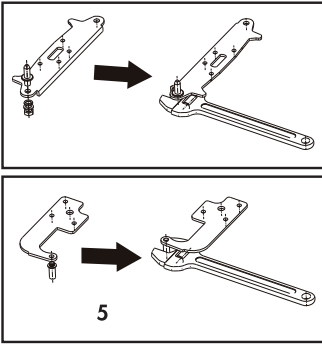
Refrigerator runs continuously

- Temperature setting is too cold
- The door is not shut properly or opened excessively
- Recently added a large quantity of warm food to the cabinet
- Close proximity to heat source or direct sunlight
- Ambient temperature or humidity is very high

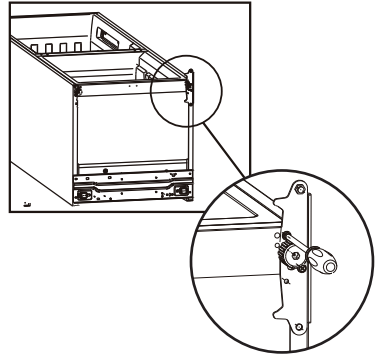
Refrigerator makes a gurgling noise when operating

- This noise is completely normal. The refrigerant inside the appliance will make a gurgling noise as it changes from a liquid to a gas and back again.

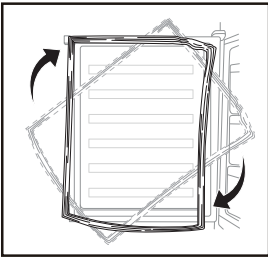
7



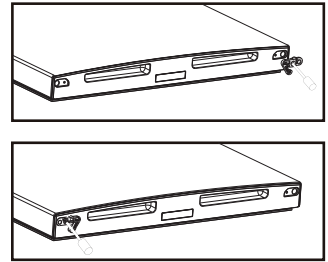
8



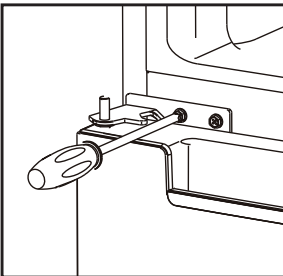
9



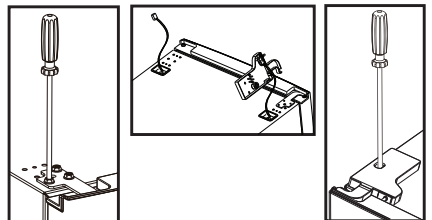
10



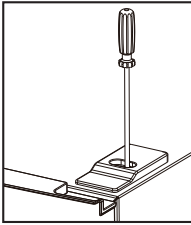
11



12



13



CARE & MAINTENANCE

CLEANING

Ensure the appliance is unplugged before cleaning.

- To clean the inside of the appliance, use a soft cloth and a solution of a tablespoon of baking soda to one quart of water or some mild detergent.
- Wash removable shelves in a mild detergent solution, then dry and wipe with a soft cloth.
- Clean the outside with a soft, damp cloth and some mild detergent.
- It is important to keep the area clean where the door seals against the cabinet. Clean this area with a soapy cloth. Rinse with a damp cloth and let dry.

NOTE: Do not use cleaners containing ammonia or alcohol on the appliance. Ammonia or alcohol can damage the appearance of the appliance. Never use any commercial or abrasive cleaners or sharp objects on any part of the appliance.

POWER FAILURE

Most power failures are corrected within a few hours and should not affect the temperature of your appliance if you minimize the number of times the door is opened. If the power is going to be off for a longer period of time, take the proper steps to protect your contents.

NOTE: Wait 3 to 5 minutes before attempting to restart the refrigerator if operation has been interrupted.

DEFROSTING

This appliance is designed with an automatic defrost function that will not require manual defrosting.

VACATION

- Short vacations: Leave the appliance operating during vacations of less than three weeks.
- Long vacations: If the appliance will not be used for several months, remove all items and turn off the appliance. Clean and dry the interior thoroughly. To prevent odor and mold growth, leave the door open slightly, blocking it open if necessary.

MOVING

- Make sure the appliance is empty.
- Secure the shelves with tape.
- Secure the door with tape.
- Turn the adjustable foot up to the base to avoid damage.
- Protect the outside of the appliance with a blanket or similar item.
- Be sure the appliance stays in the upright position during transportation.
- If the appliance is placed on its back or side during transportation, upon reaching the destination, allow it to remain upright for 6 hours before plugging in to avoid damage to internal components.

DISPOSAL

This appliance may not be treated as regular household waste, it should be taken to the appropriate waste collection point for recycling of electrical components. For information on local waste collection points, contact your local waste removal agency or government office.