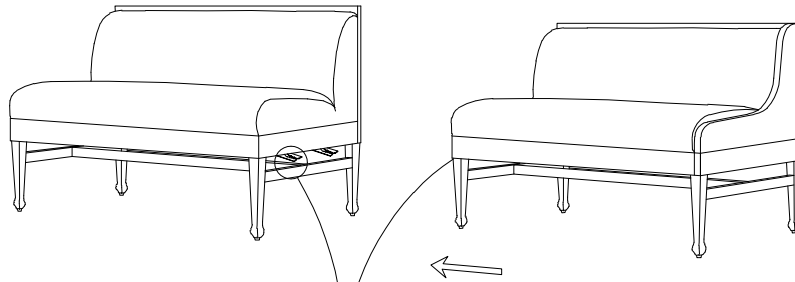


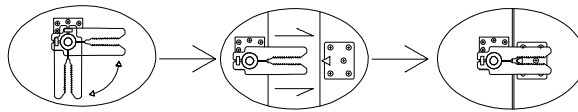
ASSEMBLY INSTRUCTION

Priscilla RAF Dining Bench- 49"

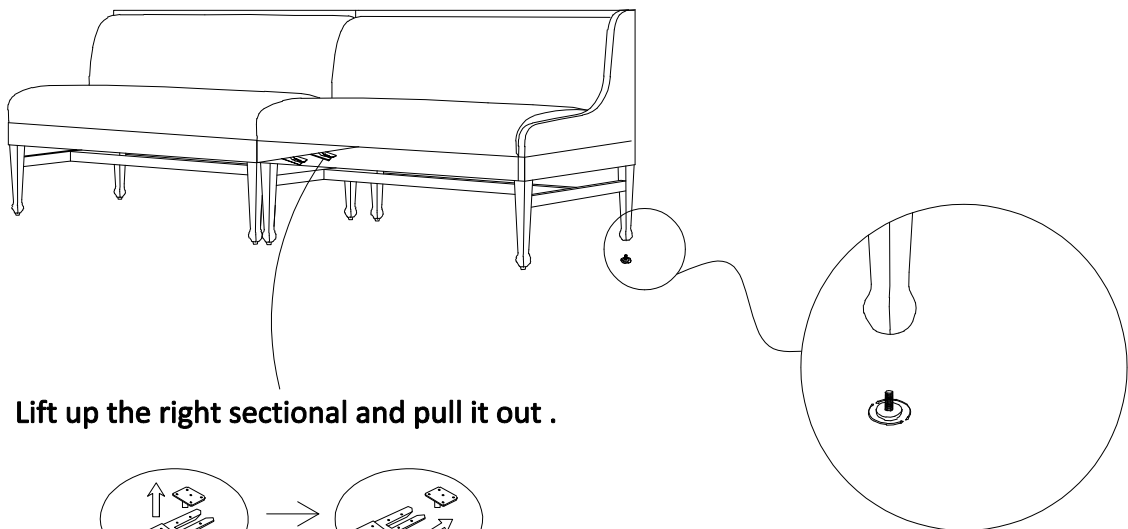
Universal assembly of the sectionals



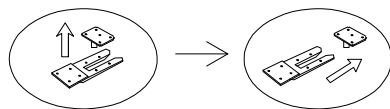
The prong and the connector must be aligned well.



How to disconnect



Lift up the right sectional and pull it out .



Check the level of the chair if leveling is necessary if needed, turn the head of the levers clockwise to raise the chair and counter clockwise to lower it. Adjust all levers until the correct lever of flatness is achieved.