

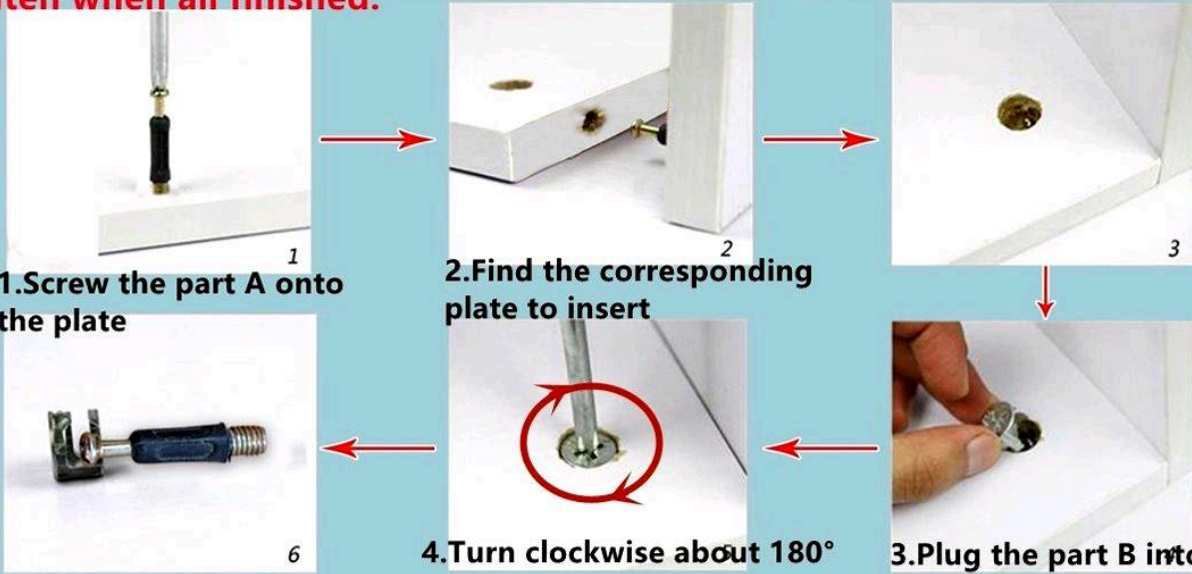


ASSEMBLY GUIDE

Warm tips: before installation, please count all the number of boards and the number of mounting screws against this drawing, and then install them. Customers can first place the panels according to the physical drawing, and then screw the screws in order according to the drawing.

						
Eccentric screw	Eccentric bolt	Self-tapping screws	Small nails	Handle	Handle screws	Metal pin
A*4	B*4	C*28	D*16	E*2	F*2	G*6

Eccentric parts installation principle: installation screws screwed seven minutes tight, and then tighten when all finished.



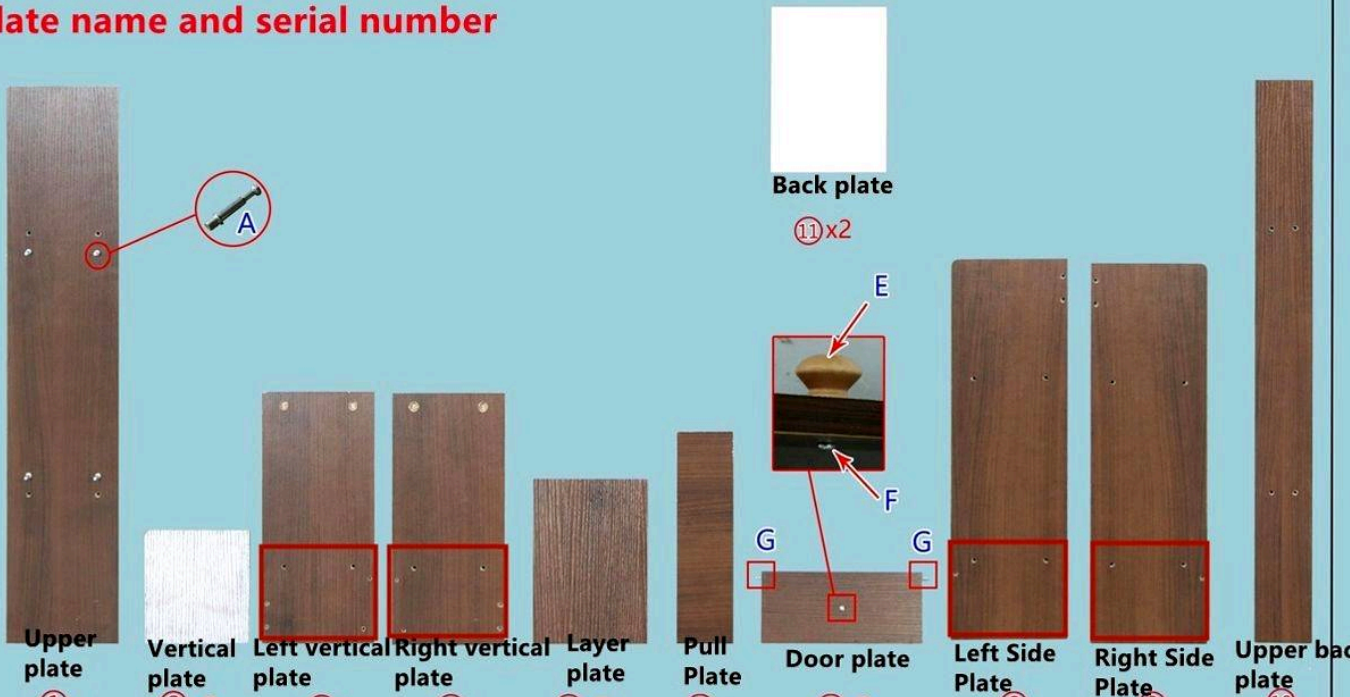
1. Screw the part A onto the plate

2. Find the corresponding plate to insert

3. Plug the part B into the round hole

4. Turn clockwise about 180° to lock the plate

Plate name and serial number



Upper plate ①

Vertical plate ② x2

Left vertical plate ③

Right vertical plate ④

Layer plate ⑤ x2

Pull Plate ⑥

Door plate ⑦ x2

Left Side Plate ⑧

Right Side Plate ⑨

Upper back plate ⑩

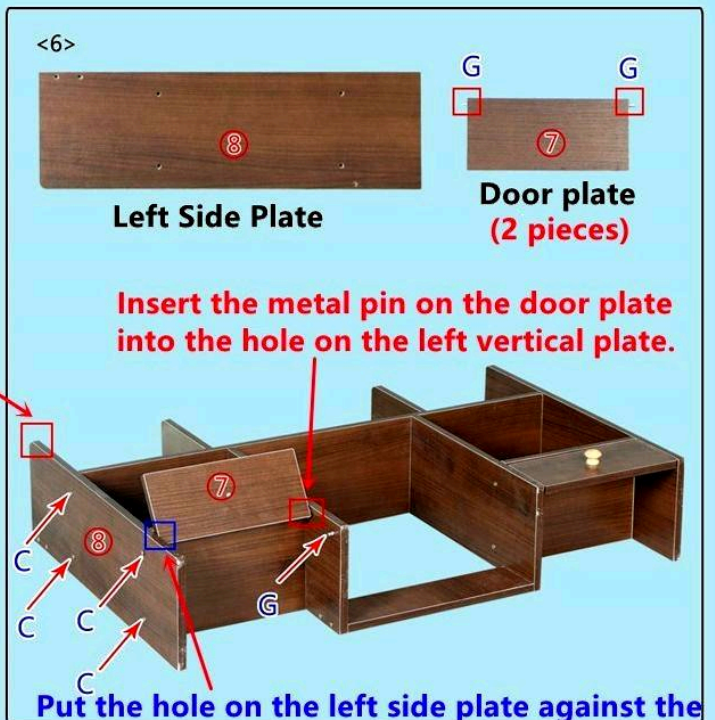
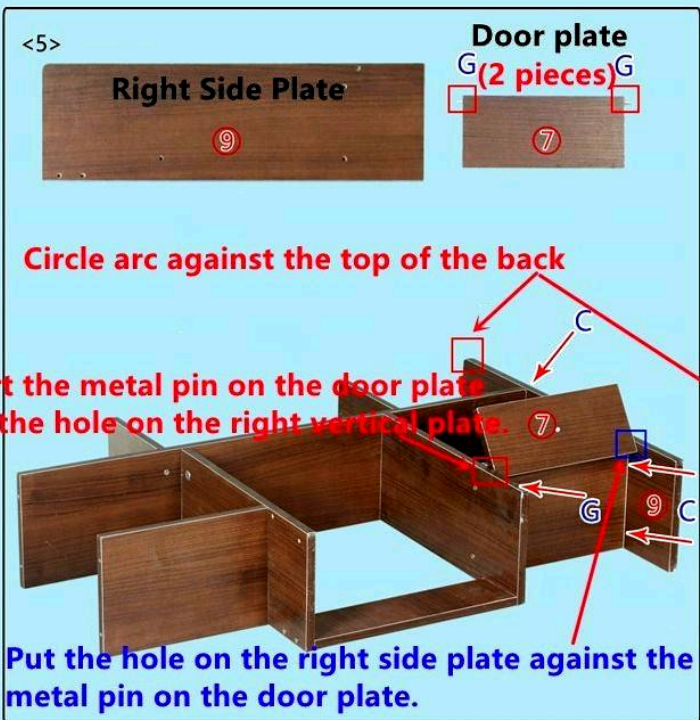
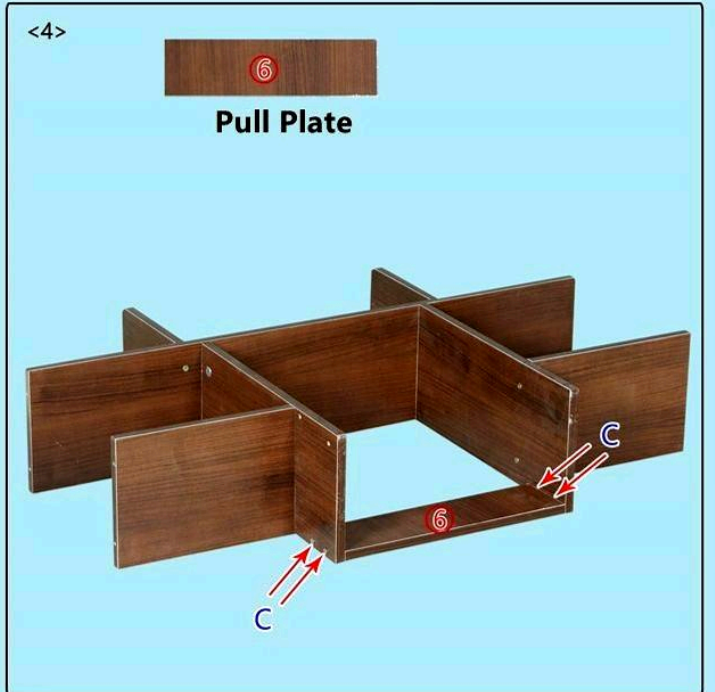
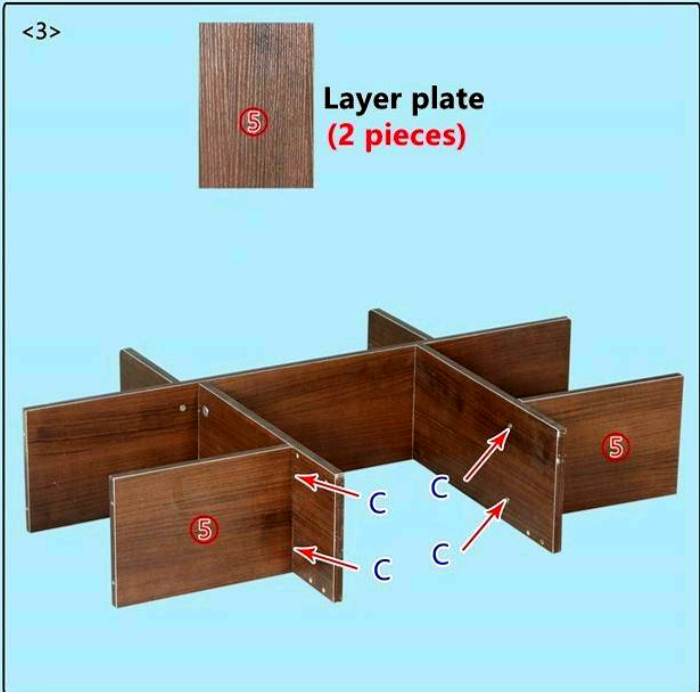
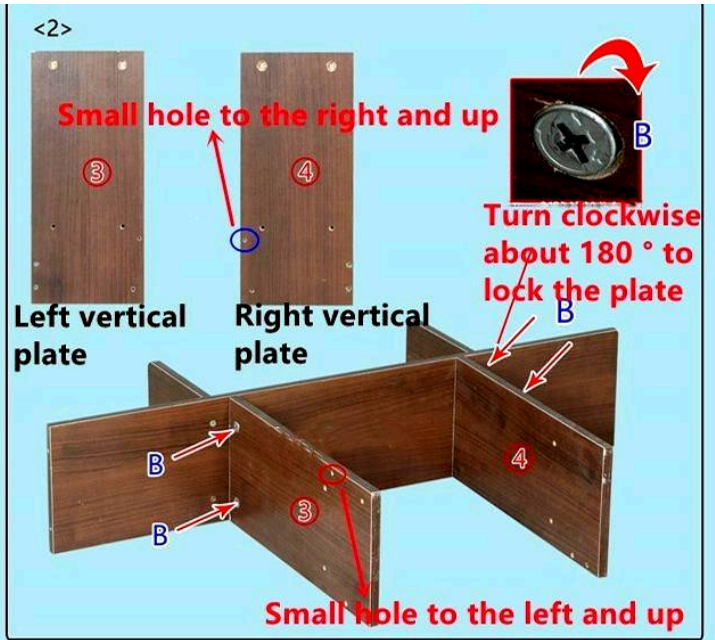
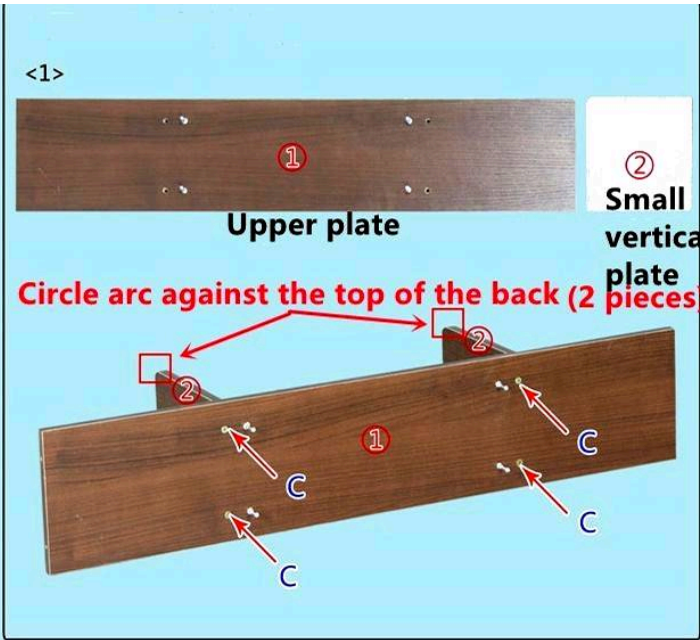
Back plate ⑪ x2

A

E

F

G



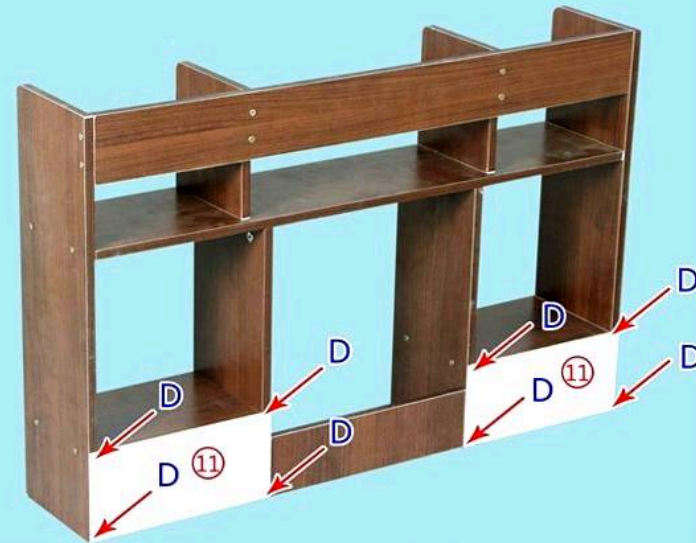
<7> **Position the whole unit with the back side facing forward.**



<8>

11

**Back plate
(2 pieces)**



<9> **Installation is complete with the front side facing forward**

