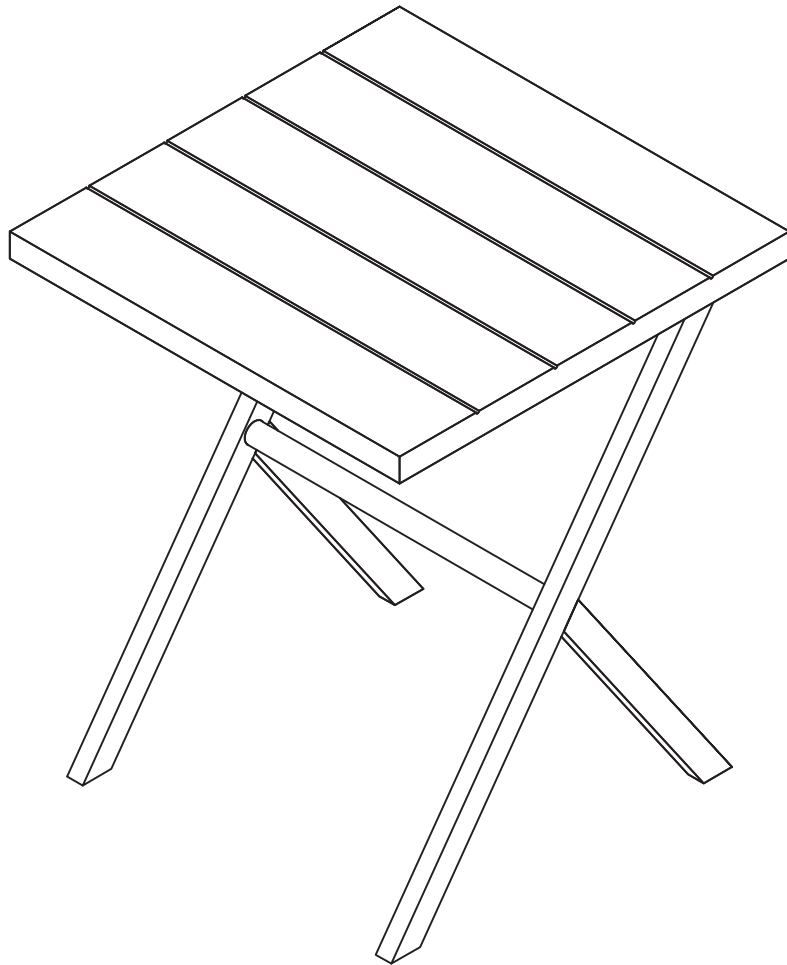


END TABLE



ASSEMBLY INSTRUCTIONS

We have designed our furniture with you , the customer in mind . Our clear , easy to follow , step by step instructions will guide you through the project from start to finish .
Feel confident that this will be a fun and rewarding project . The final product will be a quality piece of furniture that will go together smoothly and give years of enjoyment .






Please do not return to the store

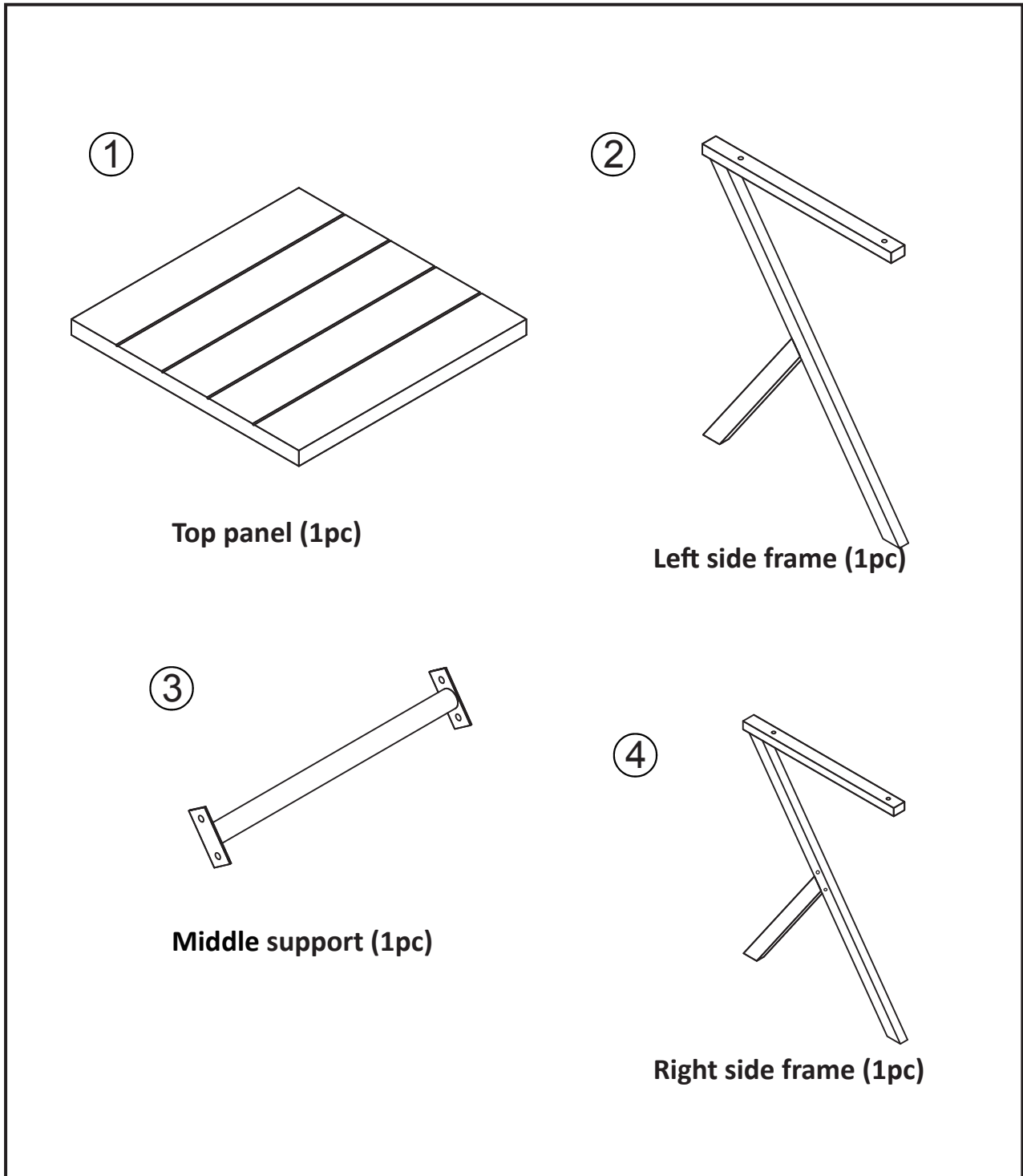
Broken or missing parts?

Need help with assembly?

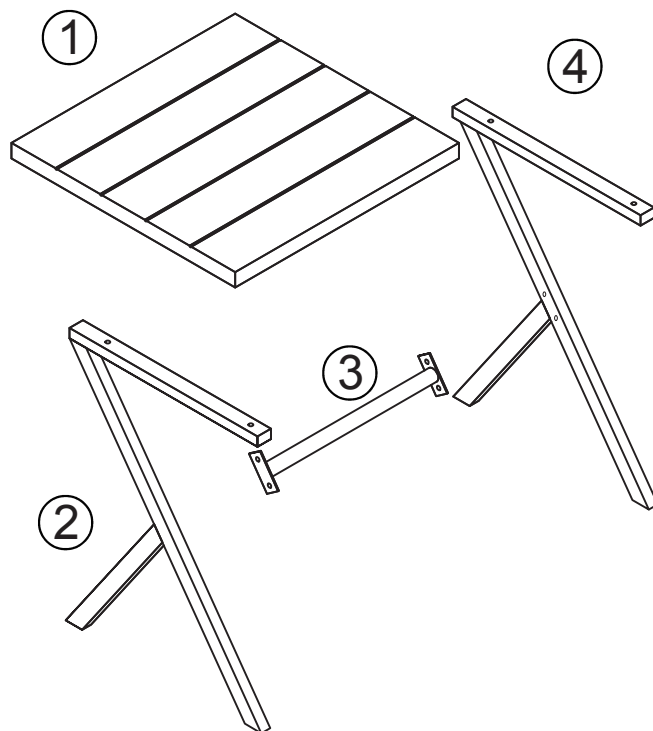
Hardware List

A 	B 	C 
Short screw (4pcs)	Long screw (4pcs)	Allen wrench (1pc)

Panel List

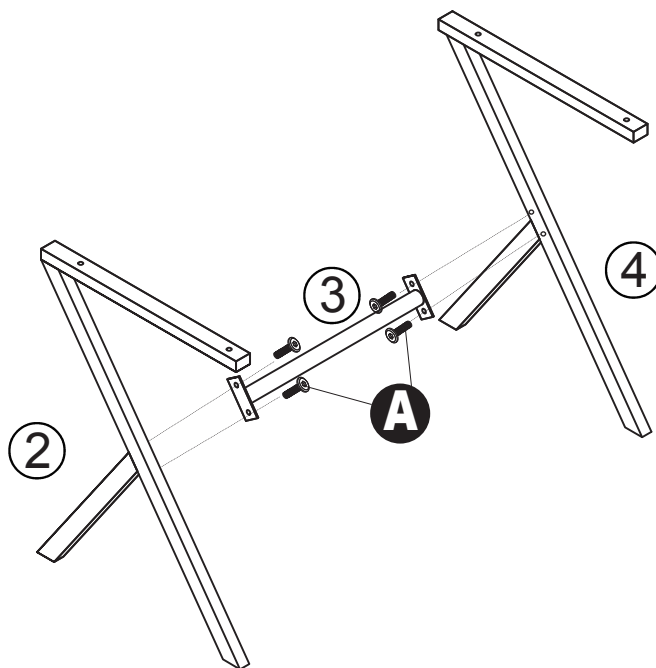


Exploded Views



Step 1

1. Connect left side frame (2) and right side frame (4) to middle support (3) using short screws (A) .



A



x4

C



x1

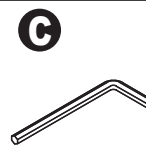
Step 2

* Place top panel ① upside down on carpet or other soft surface . *

1. Connect frame assembly to top panel ① using long screws (B) and allen wrench (c).



x4



x1

